

# OHIO

## 2006



## Induced Abortions in Ohio

Ohio Department of Health  
Ted Strickland, Governor

Alvin D. Jackson, M.D., Director of Health  
An equal opportunity employer/provider

# **Induced Abortions in Ohio, 2006**

**Prepared by:**

**Statistical Analysis Unit  
Center for Vital and Health Statistics**

**John Paulson  
Supervisor**

**Donna L. Smith  
Researcher**

**October, 2007**

## **Induced Abortion Program contact Persons**

### **Statistical Analysis Unit**

**Data Analysis**

**John Paulson**

**614-644-8507**

**Donna L. Smith**

**614-466-7545**

### **Quality Assurance**

**Fetal Development**

**Resources Directory on request**

**Hanh Le**

**614-644-7726**

### **Office of General Counsel**

**Legislation**

**Rachel Belenker**

**614-466-4882**

## TABLE OF CONTENTS

	Induced Abortion Summary	1
<b>Figure 1</b>	Resident Induced Abortions Ohio, 1976-2006	3
<b>Figure 2</b>	Selected characteristics of resident induced abortions in Ohio, 2006	5
<b>Figure 3</b>	Induced abortions reported in Ohio, by county of occurrence, 2006	7
<b>Figure 4</b>	Abortion ratio and abortion rate, by year, Ohio residents 1990-2006	9
<b>Figure 5</b>	Induced abortion rates per 1,000 women by age, Ohio residents, 2001-2006	11
<b>Figure 6</b>	Induced abortion ratio, by age group, Ohio residents, 2001 - 2006	13
<b>Figure 7</b>	Total Induced abortions by weeks of gestation, by year, 1990-2006	15
<b>Table 1</b>	Induced Abortion Summary Tables, Ohio, 2006	17
<b>Table 2</b>	Selected characteristics of induced abortions reported in Ohio, 1995-2006	18
<b>Table 3</b>	Resident induced abortions reported in Ohio, by county of residence, 1995-2006	20
<b>Table 4</b>	Resident induced abortions reported in Ohio, by county of residence and age, 2006	22
<b>Table 5a</b>	Resident induced abortions reported in Ohio, by selected counties, race, and broad age groups, 2006	24
<b>Table 5b</b>	Resident induced abortions reported in Ohio, by selected counties, race and age, 2006	28
<b>Table 6</b>	Induced abortions reported in Ohio, by county of occurrence, 1995-2006	30
<b>Table 7</b>	Induced abortions reported in Ohio, by method of termination and county of occurrence, 2006	31

<b>Table 8</b>	Total induced abortions reported in Ohio, by gestational age, 2006	32
<b>Table 9</b>	Resident induced abortions reported in Ohio, by age of women obtaining abortion and by number of prior induced abortions, 2006	33
<b>Table 10a</b>	Total induced abortions in Ohio with post abortion complications, by type of complication, 2006 (Data Source is ‘Post-Abortion Care Report for Complications’)	34
<b>Table 10b</b>	Total induced abortions in Ohio with post abortion complications, by type of complication, 2006 (Data Source is ‘Confidential Abortion Report’)	35
<b>Table 11</b>	Total induced abortions in Ohio with post abortion complications, by type of complication and gestation period, 2006 (Data Source is ‘Post Abortion Care Report for Complications’)	36
<b>Table 12</b>	Total induced abortions in Ohio with post abortion complications, by type of complication and termination method, 2006 (Data source is “Confidential Abortion Report”)	37
<b>Appendix I</b>	Confidential Abortion Report form	39
<b>Appendix II</b>	Post-Abortion Care Report for Complications form	41

## **Induced Abortion Summary**

### **Background**

Induced abortions must be reported to the Ohio Department of Health by the physician who performed the abortion, using the form “Confidential Abortion Reports.” The report includes demographic and medical history information about the woman obtaining the abortion and information about the medical procedure. These reports are used to produce statistical reports about abortions occurring in Ohio. The forms are confidential: no identifying information about women who obtain abortions is collected except the medical record number. Physicians providing post abortion care for complications are required to file a “Post Abortion Care Report for Complications.” It is not possible to link these post-abortion reports to the “Confidential Abortion Reports.” Both types of reports contain information about complications and are used to create statistical reports about post-abortion complications. This report presents information derived from both “Confidential Abortion Reports” and “Post-Abortion Care Reports for Complications” for 2006 in Ohio (reporting forms are included as Appendices I and II).

### **Characteristics of Induced Abortions Reported in Ohio, 2006**

Induced abortion statistics are available for Ohio dating back to 1976. In 1994 the reporting form was improved. Many trend comparisons in this summary date back to 1996. We also compare the 2005 abortions to 2006 occurrences to show more recent trend developments.

A total of 32,936 induced pregnancy terminations were reported in Ohio for 2006, including 30,809 for Ohio residents (93.5%). The number of total abortions performed in Ohio has seen a decline annually since 2000. (Figure 1)

Approximately one eighth of women who obtained abortions were under 20 years of age, with another third between the ages of 20-24 years of age (figure 2). The age distribution of women obtaining abortions has remained fairly unchanged since 1994. Approximately 81% of women who obtained an abortion were unmarried. The marital status distribution has remained constant since 1994. Fifty-seven percent of resident women who obtained abortions were White, 35% were African American, and 8% were other races or unknown. Three percent of abortions were obtained by women of Hispanic origin.

The 2006 Ohio abortion rate was 13 per 1,000 women ages 15-44 years (figure 4). The most recent comparable rate for the US was slightly higher at 16 per 1,000 women (year 2003). The 2006 Ohio abortion ratio was 208 abortions per 1,000 live births, a ratio that is also slightly lower than the 2003 US abortion ratio of 241 abortions per 1,000 live births.

In 2006, approximately 24% of women obtaining abortions in Ohio reported no prior pregnancies. Over half of all induced abortions involved pregnancies of less than 9 weeks (54%), with approximately 30% involving pregnancies of 9-12 weeks (figure 2). The proportion involving abortions of less than 9 weeks increased from 42% in 1995, while the proportion between 9 and 12 weeks declined from 40% to 28% (figure 7). There were 694 abortions involving pregnancies of 20 or more weeks, a number that decreased from 712 in 1995. All reported abortions were obtained in eight major metropolitan areas of Ohio. 32,869 abortions were provided in licensed ambulatory surgical facilities, and 67 were provided in hospitals (less than 1%).

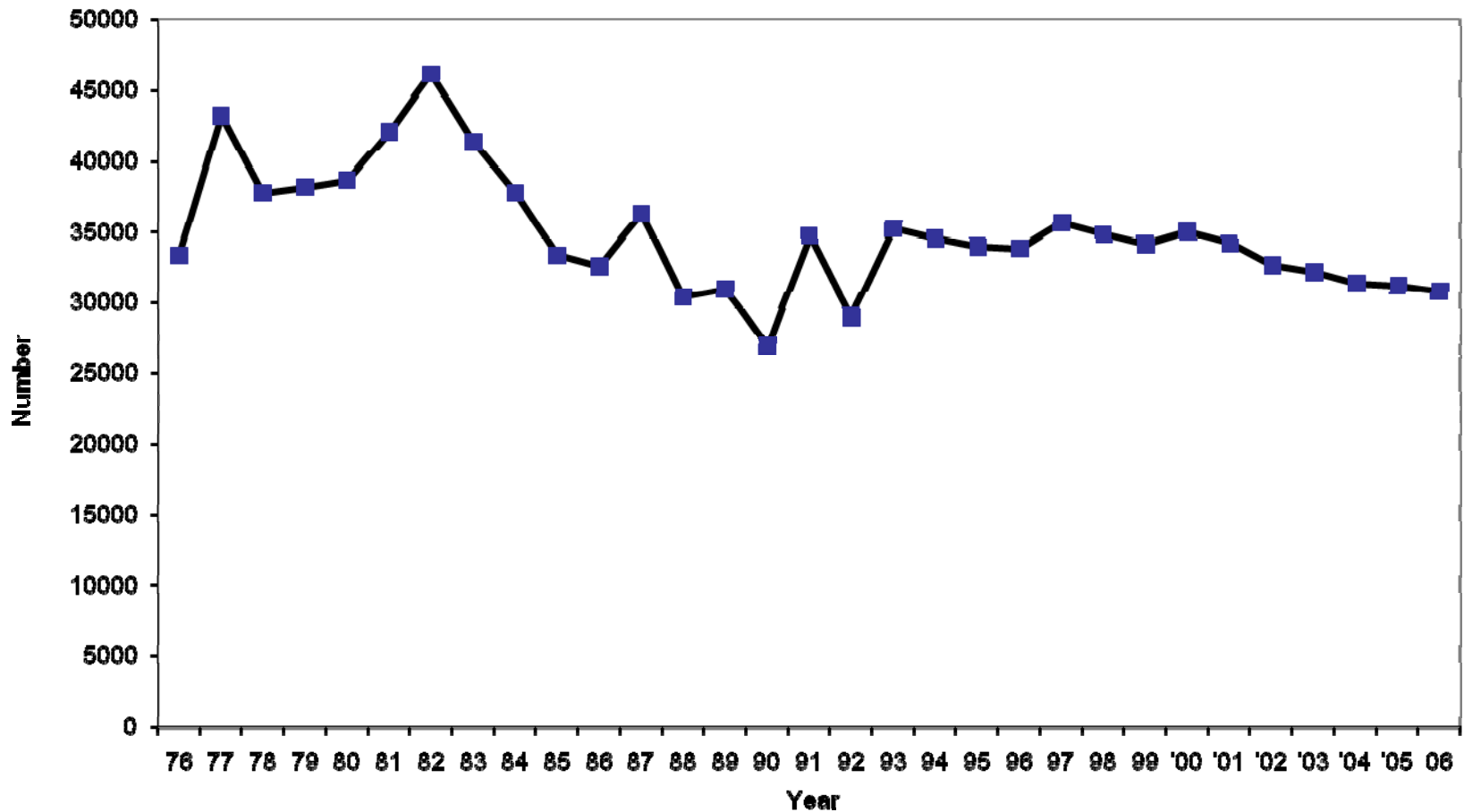
There were changes between 2002 and 2006 in method of termination for induced abortions performed in Ohio. Suction curettage remained the most frequent method of termination at 74% in 2006. That method has decreased steadily since 2000, when 92% of terminations were by suction curettage. Medical/non-surgical procedures are the second most common method (14%). Dilation and evacuation was the third most common method (8%).

Specific details about medical/non-surgical procedures have not been keyed from Ohio abortion reports, which makes it difficult to tabulate the specific procedures used in Ohio. We did, however, examine a sample of these reports in 2005 and the majority of these medical/surgical procedures were methotrexate and misoprostol administration. The medical procedures used most commonly in early abortions nationally are methotrexate with misoprostol and mifepristone with misoprostol (Goldberg AM, Greenberg MB, Darney PD. Drug therapy: miosprostol and pregnancy. N Engl J Med 2001;344:38-47). The FDA approved mifepristone for medical abortions in 2000. That approval was expected to shift many of the early abortions from surgical to non-surgical methods.

Reported post-abortion complications were rare, averaging approximately 2 per 1,000 procedures. Seventy-nine complications were reported on the “Confidential Abortion Reports”. The most common types of abortion complications were cervical laceration and incomplete abortion.

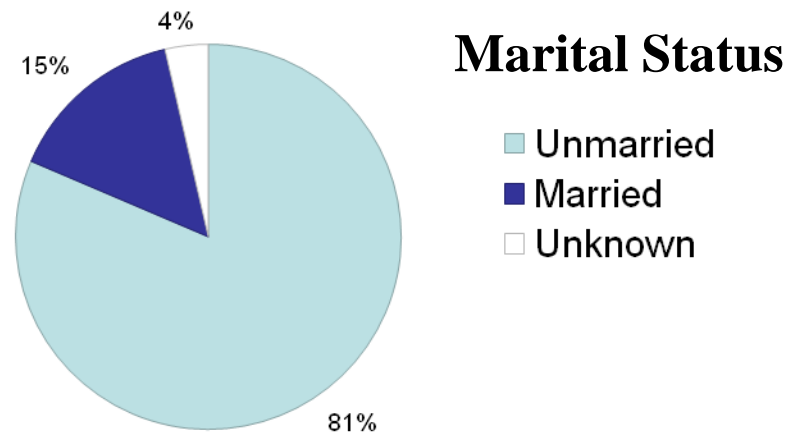
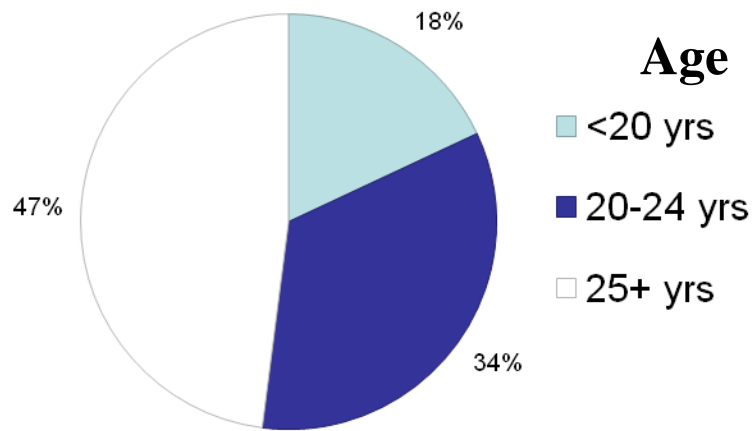
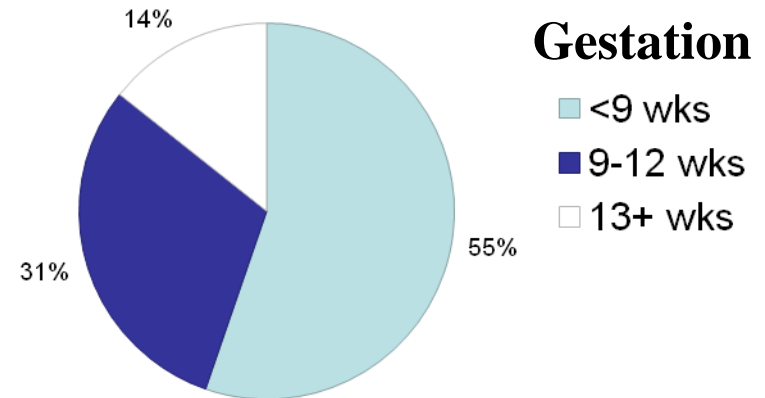
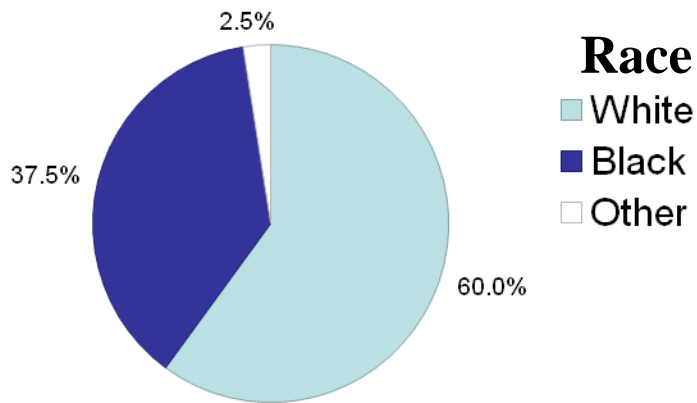
County of residence for women obtaining abortions is reported in tables 3, 4, 5a, and 5b. In accordance with Ohio Department of Health disclosure limitation policies, some counties were removed from tables 5a and 5b. The removed counties had fewer than 25 female residents in the reported age/race categories.

**Figure 1. Resident induced abortions, Ohio, 1976 - 2006**



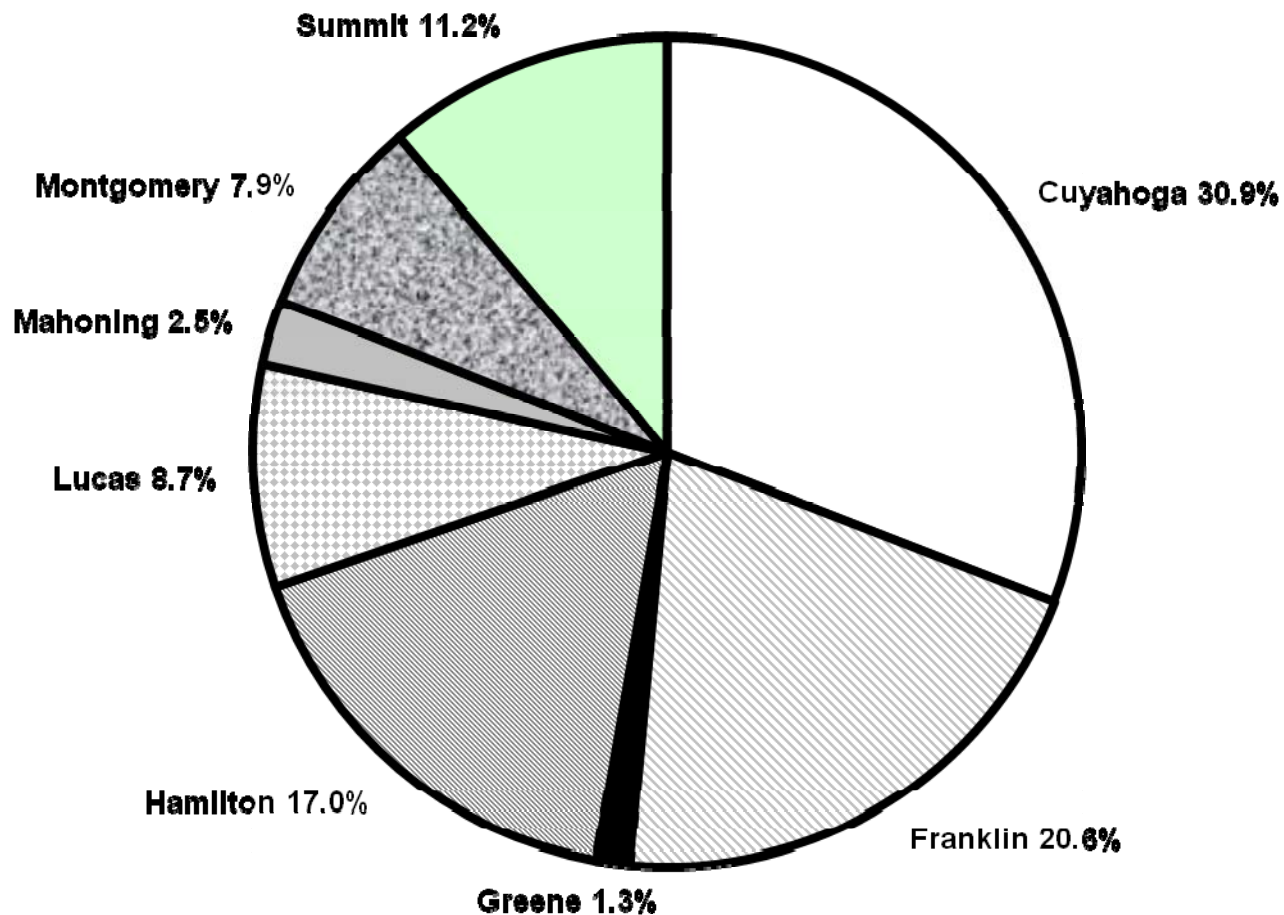


# Figure 2. Selected characteristics of resident induced abortions in Ohio, 2006

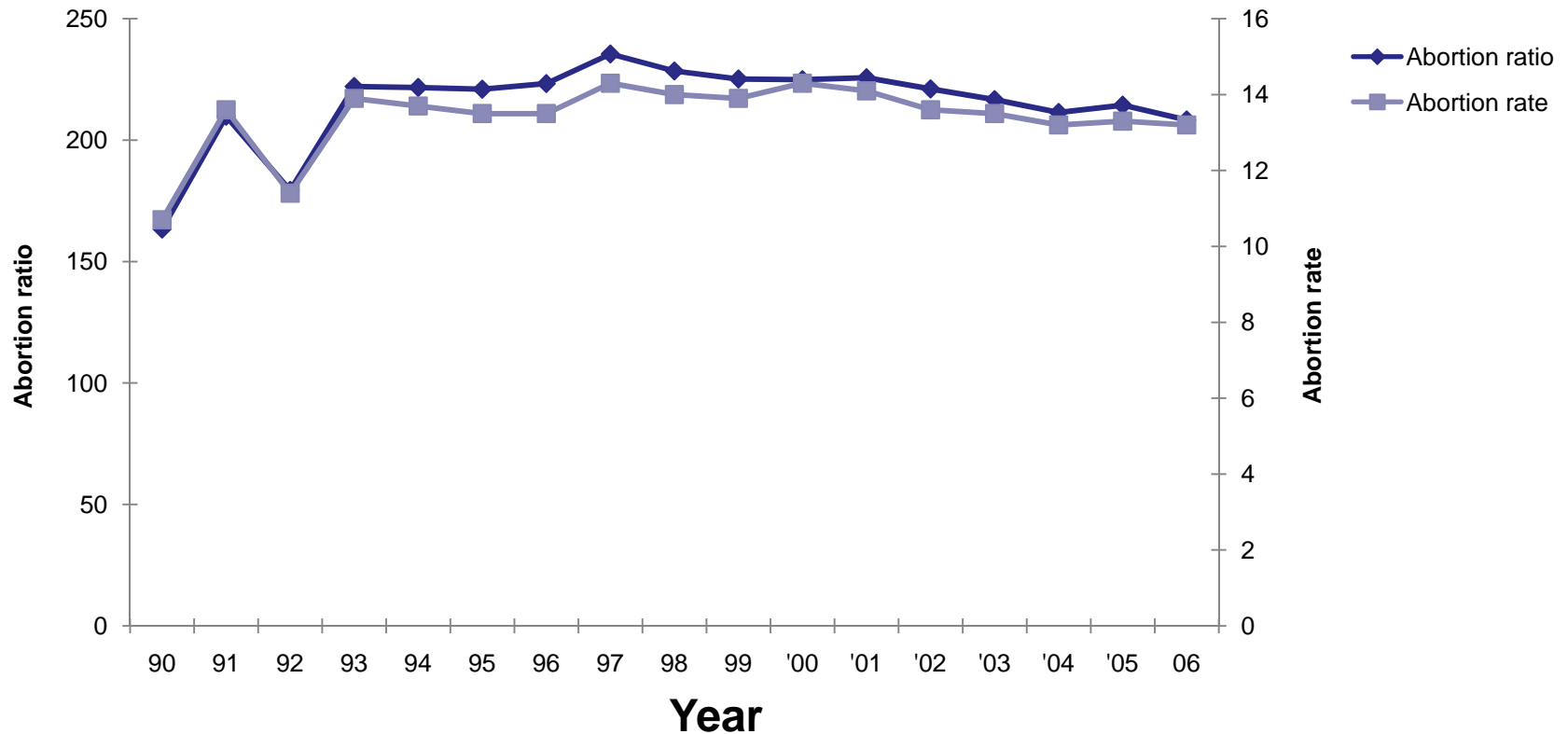


Excludes Unknown unless otherwise stated

**Figure 3. Induced abortions reported in Ohio, by county of occurrence, 2006**

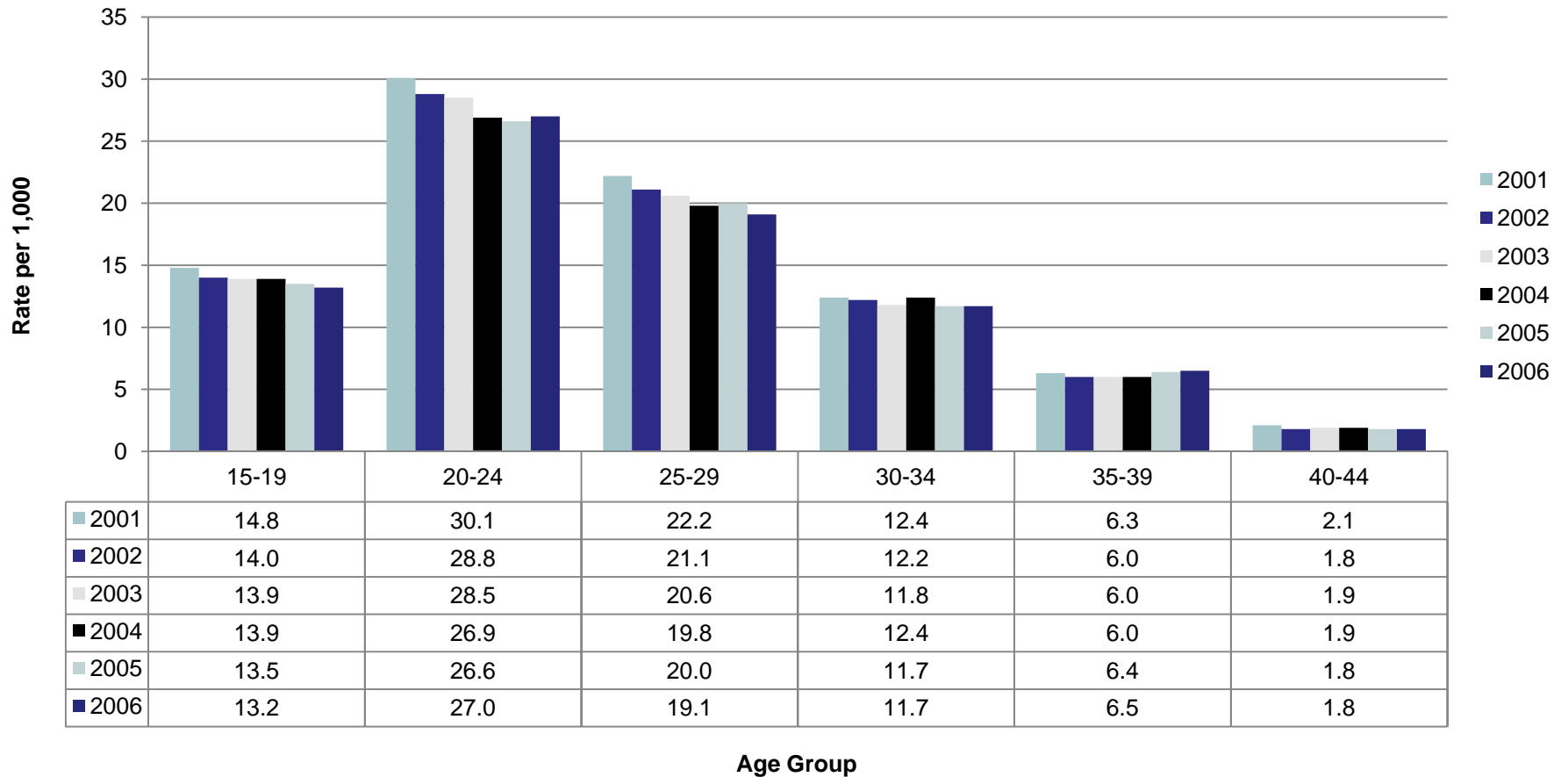


**Figure 4. Abortion ratio and abortion rate, by year, Ohio residents, 1990 - 2006**



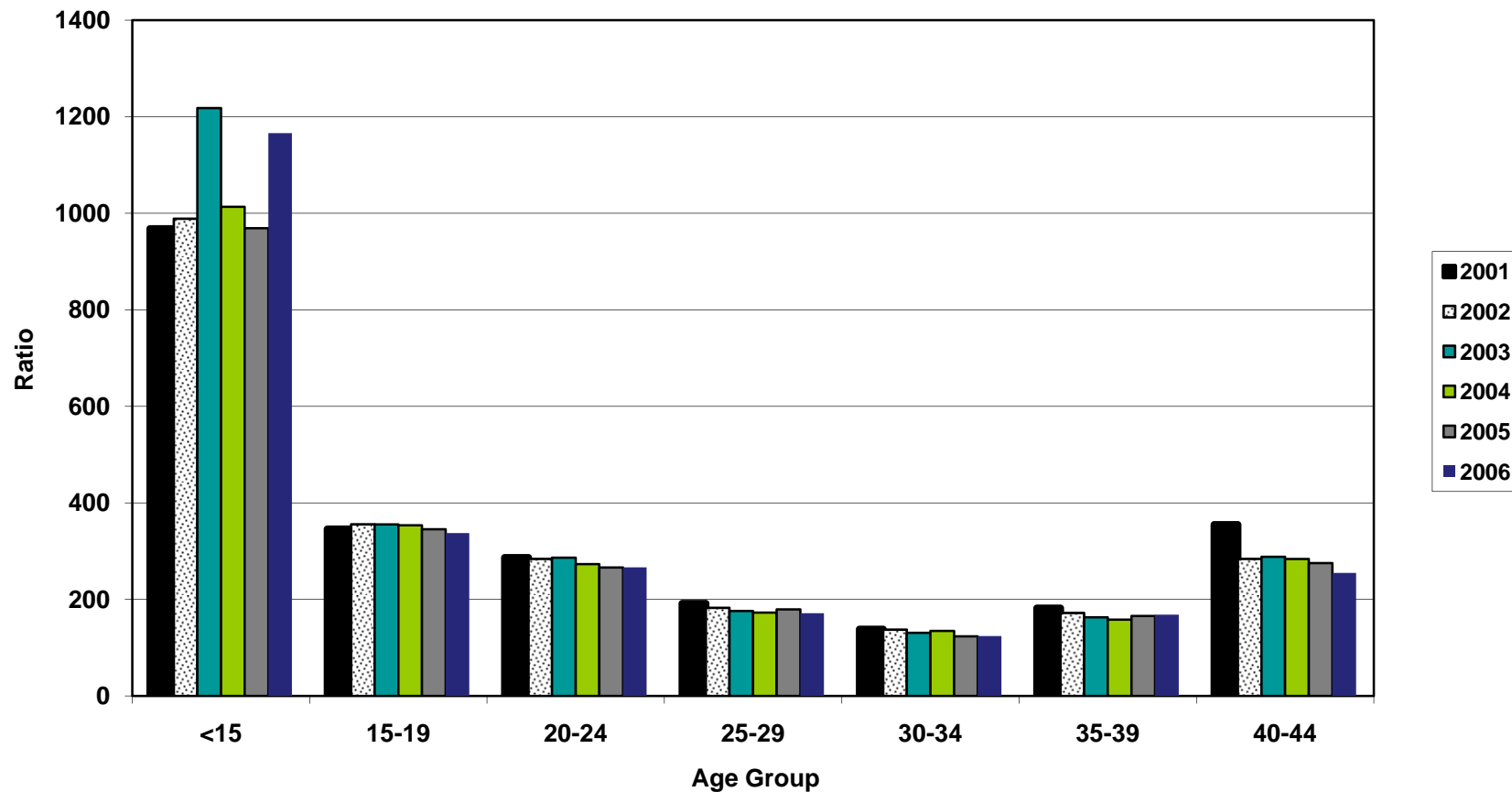
Abortion ratio is number of abortions per 1,000 live births. 2005 births were used for calculating 2006 ratio.  
Abortion rate is number of abortions per 1,000 women ages 15-44.

# Figure 5. Induced abortion rates per 1,000 women by age, Ohio residents, 2001 - 2006



Abortion rate is number of abortions per 1,000 female population in specified age group.

# Figure 6. Induced abortion ratio, by age group, Ohio residents, 2001 - 2006



Abortion ratio is number of abortions per 1,000 live births in specified age group. 2005 births were used to calculate 2006 ratios.

# Figure 7. Total Induced abortions by weeks of gestation, by year, 1990-2006

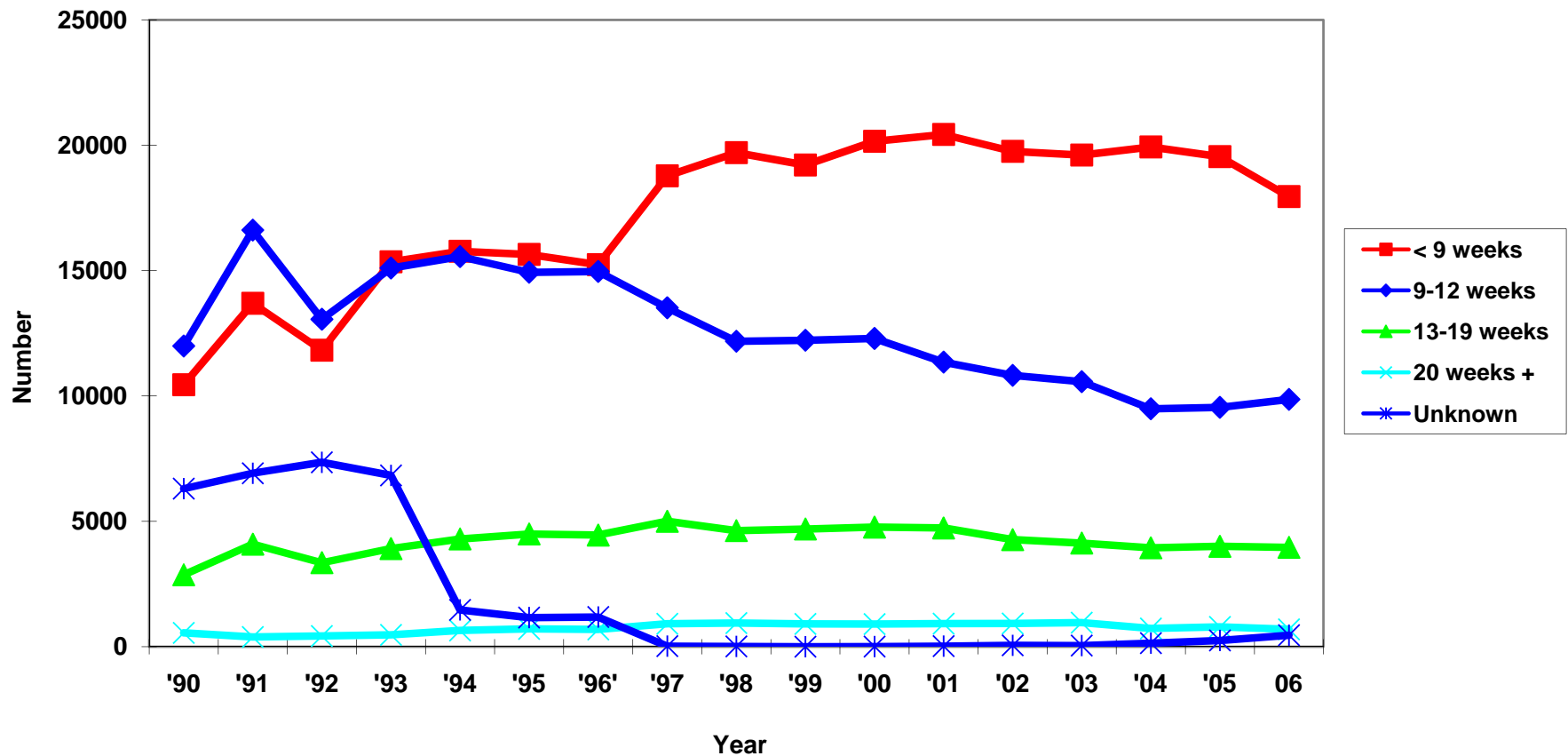


TABLE 1

## INDUCED ABORTION SUMMARY TABLE, OHIO, 2006

CHARACTERISTICS	NUMBER	PERCENT
TOTAL INDUCED ABORTIONS	32936	100.0
RESIDENCE:		
Ohio Resident	30809	93.5
Out-of-State Resident	2127	6.5
AGE:		
Under 20 Years	5895	17.9
20-24 Years	11123	33.8
25 Years and Over	15692	47.6
Age Not Reported	226	0.7
RACE GROUP:		
White	18724	56.8
Black	11683	35.5
American Indian	79	0.2
Asian/Pacific Islander	695	2.1
Other/Unknown	1755	5.3
HISPANIC:		
Non-Hispanic	31281	95.0
Hispanic	1186	3.6
Unknown	469	1.4
LEVEL OF EDUCATION:		
Less than Grade 9	662	2.0
Grade 9-12	20515	62.3
1-2 Yrs College	5637	17.1
3-4 Yrs College	4542	13.8
5+ Yrs College	885	2.7
Unknown	695	2.1
MARITAL STATUS:		
Married <u>1</u> /	4926	15.0
Unmarried <u>2</u> /	26817	81.4
Not Reported	1193	3.6
NUMBER OF LIVING CHILDREN:		
None	11488	34.9
One	9040	27.4
Two or More	10889	33.1
Not Reported	1519	4.6
WEEKS OF GESTATION:		
Less than 9 Weeks	17955	54.5
9-12 Weeks	9862	29.9
13 Weeks and Over	4657	14.1
Not Reported	462	1.4

1/ Includes Separated2/ Includes Never Married, Divorced, Widowed

TABLE 2

## SELECTED CHARACTERISTICS OF INDUCED ABORTIONS REPORTED IN OHIO, 1996-2006

Characteristic	2006	2005	2004	2003	2002	2001	2000	1999	1998	1997	1996
<u>NUMBER OF ABORTIONS</u>											
TOTAL INDUCED ABORTIONS	32936	34128	34242	35319	35830	37464	38140	37041	37479	38242	36530
RESIDENCE:											
Ohio Resident	30809	31210	31391	32180	32687	34174	35022	34134	34829	35650	33836
Out-of-State Resident	2127	2918	2851	3139	3143	3290	3118	2907	2606	2509	2635
Unknown	0	0	0	0	0	0	0	0	44	83	59
AGE:											
Under 15 Years	292	240	253	292	277	286	314	279	334	354	200
15-19 Years	5603	5817	5911	6014	6098	6485	6860	6997	7395	7795	6382
20-24 Years	11123	11502	11772	12441	12370	12710	13029	12391	12447	12682	12200
25-29 Years	7720	7968	7655	7836	7984	8531	8885	8774	8973	8951	8733
30-34 Years	4333	4687	4875	4980	5205	5299	5073	4797	4528	4689	4695
35-39 Years	2741	2708	2589	2660	2775	2956	2957	2857	2859	2859	3055
40-44 Years	845	874	910	938	906	1064	948	883	876	833	954
45 Years & Older	53	73	68	55	61	114	53	37	42	35	66
Unknown	226	259	209	103	154	19	21	26	25	44	245
EDUCATION:											
Less than Grade 9	662	653	675	756	755	797	612	493	632	644	584
Grade 9-12	20515	20911	21222	22359	22742	23834	24281	23287	23911	24547	20651
1 Or More College Years	11064	11810	11763	11924	11893	12593	12823	11919	11860	12495	12888
None/Not Reported	695	754	582	280	440	240	424	1342	1076	556	2407
RACE:											
White	18724	19673	19952	20717	20934	22045	22581	22143	22366	22894	22438
Black	11683	12070	12028	12463	12689	13160	13480	12680	12155	12377	11563
Asian/Pacific Islander	695	723	731	731	740	775	782	720	661	718	519
Other/Unknown/Not Reported	1834	1662	1531	1418	1467	1484	1297	1498	2297	2253	2010
MARITAL STATUS:											
Never Married	24571	25595	25489	26263	26140	27276	27460	25944	25997	26720	25292
Married	3936	4199	4366	4737	4720	5058	5245	4928	4904	5082	4974
Separated	990	1080	1146	1148	1215	1381	1374	1334	1317	1331	1379
Divorced	2174	2296	2462	2663	2892	3104	3300	3350	3502	3624	3777
Widowed	72	72	88	89	100	110	126	101	114	116	135
Unknown	1193	886	691	419	763	535	635	1384	1645	1369	973
NUMBER OF LIVING CHILDREN:											
No Children	11488	9415	9007	9913	10154	10866	11103	11480	11861	13884	12298
One Child	9040	9505	9535	9805	9970	10719	11006	10650	10726	10774	10064
Two or more Children	10899	11263	11515	11800	12179	12638	12679	12030	11546	11417	10451
Unknown	1519	3945	4185	3801	3527	3241	3352	2881	3346	2167	3717
WEEKS OF GESTATION:											
Less than 9 Weeks	17955	19549	19933	19610	19755	20432	20161	19212	19708	18784	15236
9 - 12 Weeks	9862	9547	9489	10570	10820	11350	12293	12221	12183	13516	14965
13 - 19 Weeks	3963	4006	3944	4133	4271	4738	4772	4695	4631	5004	4453
20 Weeks and Over	694	793	731	961	929	921	906	912	944	915	691



Table 2. Induced Abortions, 1996-2006 (page 2)

Characteristic	2006	2005	2004	2003	2002	2001	2000	1999	1998	1997	1996
<u>PERCENTAGE DISTRIBUTION</u>											
TOTAL INDUCED ABORTIONS	100.0	100.0	100.0	100.0	100.0	100.0	100.0	100.0	100.0	100.0	100.0
RESIDENCE:											
Ohio Resident	93.5	91.4	91.7	91.1	91.2	91.2	91.8	92.2	92.9	93.2	92.6
Out-of-State Resident	6.5	8.6	8.3	8.9	8.8	8.8	8.2	7.8	7.0	6.6	7.2
Unknown	0.0	0.0	0.0	0.0	0.0	0.0	0.0	0.0	0.1	0.2	0.2
AGE:											
Under 15 Years	0.9	0.7	0.7	0.8	0.8	0.8	0.8	0.8	0.9	0.9	0.5
15-19 Years	17.0	17.0	17.3	17.0	17.0	17.3	18.0	18.9	19.7	20.4	17.5
20-24 Years	33.8	33.7	34.4	35.2	34.5	33.9	34.2	33.5	33.2	33.2	33.4
25-29 Years	23.4	23.3	22.4	22.2	22.3	22.8	23.3	23.7	23.9	23.4	23.9
30-34 Years	13.2	13.7	14.2	14.1	14.5	14.1	13.3	13.0	12.1	12.3	12.9
35-39 Years	8.3	7.9	7.6	7.5	7.7	7.9	7.8	7.7	7.6	7.5	8.4
40-44 Years	2.6	2.6	2.7	2.7	2.5	2.8	2.5	2.4	2.3	2.2	2.6
45 Years & Older	0.2	0.2	0.2	0.2	0.2	0.3	0.1	0.1	0.1	0.1	0.2
Unknown	0.7	0.8	0.6	0.3	0.4	0.1	0.1	0.1	0.1	0.1	0.7
EDUCATION:											
Less than Grade 9	2.0	1.9	2.0	2.1	2.1	2.1	1.6	1.3	1.7	1.7	1.6
Grade 9-12	62.3	61.3	62.0	63.3	63.5	63.6	63.7	62.9	63.8	64.2	56.5
1 Or More College Years	33.6	34.6	34.4	33.8	33.2	33.6	33.6	32.2	31.6	32.7	35.3
None/Not Reported	2.1	2.2	1.7	0.8	1.2	0.6	1.1	3.6	2.9	1.5	6.6
RACE:											
White	56.8	57.6	58.3	58.7	58.4	58.8	59.2	59.8	59.7	59.9	61.4
Black	35.5	35.4	35.1	35.3	35.4	35.1	35.3	34.2	32.4	32.4	31.7
Asian/Pacific Islander	2.1	2.1	2.1	2.1	2.1	2.1	2.1	1.9	1.8	1.9	1.4
Other/Unknown/Not Reported	5.6	4.9	4.5	4.0	4.1	4.0	3.4	4.0	6.1	5.9	5.5
MARITAL STATUS:											
Never Married	74.6	75.0	74.4	74.4	73.0	72.8	72.0	70.0	69.4	69.9	69.2
Married	12.0	12.3	12.8	13.4	13.2	13.5	13.8	13.3	13.1	13.3	13.6
Separated	3.0	3.2	3.3	3.3	3.4	3.7	3.6	3.6	3.5	3.5	3.8
Divorced	6.6	6.7	7.2	7.5	8.1	8.3	8.7	9.0	9.3	9.5	10.3
Widowed	0.2	0.2	0.3	0.3	0.3	0.3	0.3	0.3	0.3	0.3	0.4
Unknown	3.6	2.6	2.0	1.2	2.1	1.4	1.7	3.7	4.4	3.6	2.7
NUMBER OF LIVING CHILDREN:											
No Children	34.9	27.6	26.3	28.1	28.3	29.0	29.1	31.0	31.6	36.3	33.7
One Child	27.4	27.9	27.8	27.8	27.8	28.6	28.9	28.8	28.6	28.2	27.5
Two or more Children	33.1	33.0	33.6	33.4	34.0	33.7	33.2	32.5	30.8	29.9	28.6
Unknown	4.6	11.6	12.2	10.8	9.8	8.7	8.8	7.8	8.9	5.7	10.2
WEEKS OF GESTATION:											
Less than 9 Weeks	54.5	57.3	58.2	55.5	55.1	54.5	52.9	51.9	52.6	49.1	41.7
9 - 12 Weeks	29.9	28.0	27.7	29.9	30.2	30.3	32.2	33.0	32.5	35.3	41.0
13 - 19 Weeks	12.0	11.7	11.5	11.7	11.9	12.6	12.5	12.7	12.4	13.1	12.2
20 Weeks and Over	2.1	2.3	2.1	2.7	2.6	2.5	2.4	2.5	2.5	2.4	1.9

TABLE 3

## RESIDENT INDUCED ABORTIONS REPORTED IN OHIO, BY COUNTY OF RESIDENCE, 1996-2006

Residence	2006	2005	2004	2003	2002	2001	2000	1999	1998	1997	1996
OHIO	30809	31210	31391	32180	32687	34174	35022	34134	34829	35650	33813
Adams	28	22	15	18	15	16	22	24	28	36	36
Allen	153	206	190	159	166	153	165	176	184	207	202
Ashland	48	61	57	64	47	67	69	74	70	57	55
Ashtabula	208	187	216	214	228	228	222	195	233	264	384
Athens	100	111	123	121	119	113	131	163	149	196	135
Auglaize	42	34	37	47	39	47	54	51	52	61	51
Belmont	28	40	29	30	24	25	41	26	38	39	22
Brown	41	55	44	46	67	63	71	75	71	71	55
Butler	775	816	843	771	773	796	769	854	859	901	951
Carroll	25	23	34	32	35	38	40	36	35	33	36
Champaign	57	55	63	52	45	58	74	61	72	70	71
Clark	263	282	279	331	300	342	357	319	346	349	395
Clermont	293	317	326	326	344	385	395	429	405	408	263
Clinton	46	49	45	60	74	76	74	75	62	65	80
Columbiana	135	188	179	162	220	202	189	178	172	179	188
Coshocton	28	37	32	43	35	26	34	36	42	31	19
Crawford	42	48	55	45	58	58	74	70	78	66	56
Cuyahoga	7252	7412	7565	7889	8466	8644	8906	8790	8717	8732	8098
Darke	48	32	47	47	61	45	44	54	51	67	83
Defiance	48	23	37	37	37	35	43	32	69	45	68
Delaware	188	207	171	169	142	130	178	117	149	149	139
Erie	147	209	170	183	209	227	220	216	201	213	233
Fairfield	184	208	204	184	185	179	184	193	186	194	115
Fayette	33	48	41	43	27	49	44	36	45	46	56
Franklin	4683	4601	4678	4684	4290	4645	4764	4056	4143	4276	3395
Fulton	42	49	41	36	43	52	48	75	62	56	78
Gallia	18	9	17	12	15	15	19	19	18	24	11
Geauga	131	128	139	121	152	135	161	148	144	137	126
Greene	320	282	314	311	322	306	379	321	411	390	379
Guernsey	46	27	49	46	61	44	59	66	56	77	47
Hamilton	3112	2999	3172	3046	3374	3559	3578	3593	3701	3814	3925
Hancock	125	129	120	115	121	109	118	126	134	133	125
Hardin	28	32	47	35	28	36	29	40	51	36	50
Harrison	6	9	6	9	13	10	15	12	18	20	10
Henry	42	31	34	28	29	23	32	42	30	28	52
Highland	44	41	50	53	49	44	46	60	67	68	66
Hocking	33	44	26	26	29	25	34	30	27	44	17
Holmes	15	22	18	19	21	22	20	12	23	13	30
Huron	94	77	79	77	101	123	118	102	115	135	114
Jackson	27	35	28	34	26	35	27	32	30	35	20
Jefferson	26	38	17	25	23	30	23	24	22	21	21
Knox	77	55	66	64	67	65	65	54	70	64	48
Lake	544	596	571	592	598	654	563	624	594	616	520
Lawrence	16	20	15	32	21	18	10	18	27	20	18

TABLE 3. Resident Induced Abortions, 1996-2006 (Page 2)

Residence	2006	2005	2004	2003	2002	2001	2000	1999	1998	1997	1996
Licking	238	250	259	257	258	259	269	268	242	292	193
Logan	64	48	50	55	59	60	78	78	86	76	72
Lorain	692	760	812	841	746	910	878	837	932	880	936
Lucas	1803	1633	1603	1566	1481	1558	1600	1673	1668	1781	1664
Madison	48	75	49	53	49	66	55	67	54	76	59
Mahoning	702	791	759	845	847	847	892	827	852	871	878
Marion	84	101	75	73	74	78	95	107	110	122	67
Medina	278	292	306	322	301	318	313	289	259	297	310
Meigs	7	8	12	14	16	8	14	11	11	15	10
Mercer	31	31	36	17	44	43	46	41	37	28	40
Miami	146	139	163	158	142	158	175	170	199	199	209
Monroe	35	44	15	10	11	13	10	15	17	9	6
Montgomery	1616	1531	1632	1709	1807	2072	2138	2158	2259	2366	2504
Morgan	6	7	4	10	12	9	17	13	12	8	5
Morrow	34	45	33	33	37	39	27	35	31	40	20
Muskingum	99	112	127	122	79	105	118	126	167	142	97
Noble	9	2	5	6	5	8	11	13	8	9	5
Ottawa	69	63	56	58	69	65	67	67	81	99	86
Paulding	9	10	7	3	9	5	8	10	8	17	12
Perry	44	40	34	35	32	41	41	43	54	52	30
Pickaway	72	46	71	64	52	57	62	66	84	76	49
Pike	27	20	27	19	22	31	26	16	21	29	15
Portage	374	414	429	467	422	447	430	447	441	453	415
Preble	56	45	38	44	52	56	64	69	81	70	75
Putnam	21	14	25	20	20	24	29	26	32	33	37
Richland	188	217	184	196	216	212	231	209	227	242	157
Ross	87	98	107	95	103	103	108	118	127	151	110
Sandusky	94	91	101	92	98	118	119	120	104	115	119
Scioto	65	68	74	85	61	66	81	62	50	73	67
Seneca	76	73	65	72	73	86	108	94	116	80	119
Shelby	54	59	54	74	53	54	87	59	80	86	78
Stark	831	859	795	862	900	819	851	865	895	909	958
Summit	1742	1798	1677	1889	1870	1882	1810	1840	1809	1821	1969
Trumbull	504	536	493	595	633	628	683	559	557	600	593
Tuscarawas	115	156	135	170	139	153	130	158	157	135	134
Union	55	52	59	63	55	66	68	53	55	48	37
Van Wert	14	17	13	12	15	9	17	10	15	12	16
Vinton	11	13	11	14	14	17	14	8	12	20	7
Warren	251	253	246	269	266	287	265	271	279	283	256
Washington	33	28	25	37	28	41	36	31	38	37	16
Wayne	162	153	128	139	145	136	139	150	158	166	156
Williams	34	40	34	28	20	33	32	41	38	46	48
Wood	267	255	254	232	238	211	250	255	280	270	309
Wyandot	21	29	20	17	15	24	22	25	29	30	27
Ohio Co Unk	0	0	0	0	0	0	0	0	0	0	0

TABLE 4

## RESIDENT INDUCED ABORTIONS REPORTED IN OHIO, BY COUNTY AND AGE, 2006

Residence	Total	Age Group												Unk.
		<15	15	16	17	18	19	20-24	25-29	30-34	35-39	40-44	45+	
OHIO TOTAL	30809	274	85	677	883	1517	1763	10400	7246	4097	2541	774	47	205
Adams	28	1	0	0	1	0	0	11	7	2	3	3	0	0
Allen	153	1	3	1	3	4	7	47	41	25	18	2	1	0
Ashland	48	0	0	0	1	3	5	14	10	7	4	3	0	1
Ashtabula	208	1	1	6	3	10	9	76	53	22	19	6	1	1
Athens	100	0	1	3	1	6	7	52	16	10	4	0	0	0
Auglaize	42	0	0	1	3	3	1	15	11	3	4	1	0	0
Belmont	28	0	0	1	0	2	4	8	3	5	4	1	0	0
Brown	41	0	0	2	1	2	0	12	15	2	5	1	0	1
Butler	775	4	7	27	28	38	42	287	152	99	52	30	5	4
Carroll	25	0	0	0	1	2	2	13	3	3	1	0	0	0
Champaign	57	2	2	2	2	5	6	15	10	6	7	0	0	0
Clark	263	2	4	6	7	12	17	93	55	31	28	6	0	2
Clermont	293	5	7	2	4	11	21	98	75	44	20	5	0	1
Clinton	46	0	1	0	2	3	1	16	15	3	3	2	0	0
Columbiana	135	2	1	3	5	8	6	47	23	17	18	5	0	0
Coshocton	28	0	0	1	0	2	4	9	6	2	2	2	0	0
Crawford	42	0	2	2	0	5	2	19	5	4	2	1	0	0
Cuyahoga	7252	64	92	170	214	359	376	2306	1816	1049	599	168	10	29
Darke	48	0	1	1	0	3	4	17	7	7	5	1	0	2
Defiance	48	0	2	1	2	1	3	17	9	5	6	1	0	1
Delaware	188	1	2	3	4	5	7	73	43	20	23	5	0	2
Erie	147	0	2	3	9	8	13	46	36	15	10	4	0	1
Fairfield	184	1	1	8	10	14	10	50	38	31	12	5	0	4
Fayette	33	0	0	0	1	2	3	6	11	7	2	1	0	0
Franklin	4683	35	42	71	112	205	237	1599	1197	651	372	113	5	44
Fulton	42	0	0	2	2	7	4	11	2	9	2	2	0	1
Gallia	18	0	0	0	0	2	0	4	5	2	3	1	0	1
Geauga	131	0	2	1	2	8	12	41	22	17	17	8	1	0
Greene	320	2	3	3	6	20	20	125	80	26	25	10	0	0
Guernsey	46	0	1	2	0	2	1	18	7	7	4	4	0	0
Hamilton	3112	40	41	63	77	125	158	1091	820	384	216	79	4	14
Hancock	125	0	2	2	7	9	5	45	23	18	11	1	0	2
Hardin	28	0	0	0	1	2	2	16	3	2	1	1	0	0
Harrison	6	0	1	0	0	0	0	3	2	0	0	0	0	0
Henry	42	0	1	0	1	3	2	15	9	9	1	1	0	0
Highland	44	0	1	2	2	1	3	11	16	6	1	1	0	0
Hocking	33	1	3	0	1	1	2	16	3	1	2	2	0	1
Holmes	15	1	0	1	0	0	1	4	3	2	2	0	0	1
Huron	94	1	1	1	4	3	8	38	24	4	8	1	0	1
Jackson	27	0	3	1	1	2	5	6	3	1	4	0	0	1
Jefferson	26	0	1	1	1	0	2	9	4	8	0	0	0	0
Knox	77	0	1	4	2	5	8	26	15	10	2	3	0	1
Lake	544	5	7	10	21	25	36	160	124	79	57	17	0	3
Lawrence	16	0	0	1	2	0	1	5	2	1	3	1	0	0

Table 4 Resident Induced Abortions, 2006 (Page 2)

Residence	Total	Age Group												Unk.
		<15	15	16	17	18	19	20-24	25-29	30-34	35-39	40-44	45+	
Licking	238	0	2	5	8	12	12	76	49	45	19	4	1	5
Logan	64	0	2	1	1	6	3	18	13	12	4	2	0	2
Lorain	692	7	5	17	16	24	51	248	142	98	63	16	3	2
Lucas	1803	23	23	42	54	110	117	634	385	234	126	33	4	18
Madison	48	0	0	1	4	1	6	17	9	5	3	2	0	0
Mahoning	702	7	8	19	15	44	41	231	174	84	58	19	0	2
Marion	84	1	2	3	3	10	8	21	15	10	5	5	0	1
Medina	278	2	2	7	13	16	17	82	59	33	36	10	0	1
Meigs	7	1	0	0	0	0	0	3	1	0	2	0	0	0
Mercer	31	0	0	2	2	2	1	9	5	6	3	1	0	0
Miami	146	0	1	6	5	11	12	49	27	13	12	8	0	2
Monroe	35	0	1	1	2	3	1	10	4	6	6	1	0	0
Montgomery	1616	17	27	41	53	79	87	551	369	209	136	30	2	15
Morgan	6	0	1	1	0	0	1	0	1	1	0	1	0	0
Morrow	34	0	0	0	2	2	1	13	3	3	9	1	0	0
Muskingum	99	1	3	0	1	5	9	40	21	14	4	0	0	1
Noble	9	0	0	0	1	1	0	1	3	1	2	0	0	0
Ottawa	69	1	0	4	4	2	9	19	12	12	5	1	0	0
Paulding	9	0	0	0	0	0	0	4	2	2	1	0	0	0
Perry	44	1	0	0	0	5	1	14	8	5	7	3	0	0
Pickaway	72	0	1	3	2	4	5	24	15	9	6	3	0	0
Pike	27	0	0	0	0	3	1	8	9	3	2	0	0	1
Portage	374	1	2	4	8	19	18	160	67	45	35	13	1	1
Preble	56	0	2	1	1	7	4	17	12	3	8	1	0	0
Putnam	21	0	0	0	2	2	2	4	2	5	2	1	1	0
Richland	188	1	3	5	2	8	17	71	37	24	15	5	0	0
Ross	87	1	0	4	4	1	6	26	19	14	9	1	1	1
Sandusky	94	0	2	4	2	2	7	38	20	9	4	4	1	1
Scioto	65	0	1	3	3	3	7	21	14	11	1	1	0	0
Seneca	76	1	1	3	3	2	6	28	21	8	1	0	1	1
Shelby	54	0	1	0	2	4	3	10	21	8	3	1	0	1
Stark	831	7	14	13	32	42	52	292	186	107	57	23	1	5
Summit	1742	23	25	36	54	81	107	574	412	216	154	47	2	11
Trumbull	504	6	6	11	10	25	34	171	102	67	56	15	0	1
Tuscarawas	115	0	1	1	6	6	7	39	19	11	18	4	1	2
Union	55	1	1	3	1	3	2	15	15	3	9	2	0	0
Van Wert	14	0	0	1	0	1	1	6	3	1	1	0	0	0
Vinton	11	0	0	1	1	1	2	4	1	1	0	0	0	0
Warren	251	0	1	6	7	13	8	63	58	48	36	8	1	2
Washington	33	0	0	1	0	3	2	14	10	1	0	2	0	0
Wayne	162	1	3	1	4	11	12	57	25	21	15	6	0	6
Williams	34	0	1	2	0	3	2	11	6	5	4	0	0	0
Wood	267	2	3	15	9	12	23	112	41	25	20	2	0	3
Wyandot	21	0	1	1	2	0	1	5	5	3	2	0	0	1

TABLE 5a

RESIDENT INDUCED ABORTIONS REPORTED IN OHIO, BY SELECTED  
COUNTIES, RACE AND BROAD AGE GROUPS, 2006

County/Race	Total	Age Group					Unk
		10-19	20-29	30-39	40-49	50 +	
OHIO	30809	5499	17646	6638	817	4	205
White	17003	3028	9554	3764	541	3	113
Black	11422	2098	6778	2283	192	1	70
Oth/Unk	2384	373	1314	591	84	0	22
ALLEN	153	19	88	43	3	0	0
White	109	14	60	32	3	0	0
Black	36	5	22	9	0	0	0
Oth/Unk	8	0	6	2	0	0	0
ASHTABULA	208	30	129	41	7	0	1
White	184	27	112	39	6	0	0
Black	12	2	10	0	0	0	0
Oth/Unk	12	1	7	2	1	0	1
ATHENS	100	18	68	14	0	0	0
White	86	17	57	12	0	0	0
Black	4	1	2	1	0	0	0
Oth/Unk	10	0	9	1	0	0	0
BUTLER	775	146	439	151	34	1	4
White	565	109	315	110	26	1	4
Black	138	23	82	27	6	0	0
Oth/Unk	72	14	42	14	2	0	0
CLARK	263	48	148	59	6	0	2
White	188	37	105	41	5	0	0
Black	59	9	34	15	1	0	0
Oth/Unk	16	2	9	3	0	0	2
CLERMONT	293	50	173	64	5	0	1
White	273	46	163	58	5	0	1
Black	12	3	7	2	0	0	0
Oth/Unk	8	1	3	4	0	0	0
COLUMBIANA	135	25	70	35	5	0	0
White	121	24	59	33	5	0	0
Black	7	1	5	1	0	0	0
Oth/Unk	7	0	6	1	0	0	0
CUYAHOGA	7252	1275	4122	1648	178	0	29
White	2212	349	1228	553	75	0	7
Black	4456	831	2589	937	80	0	19
Oth/Unk	584	95	305	158	23	0	3

Table 5a. Resident Induced Abortions, 2006 (Page 2)

County/Race	Total	Age Group					
		10-19	20-29	30-39	40-49	50 +	Unk
DELAWARE	188	22	116	43	5	0	2
White	154	17	95	35	5	0	2
Black	15	4	8	3	0	0	0
Oth/Unk	19	1	13	5	0	0	0
ERIE	147	35	82	25	4	0	1
White	99	25	49	21	3	0	1
Black	39	5	30	3	1	0	0
Oth/Unk	9	5	3	1	0	0	0
FAIRFIELD	184	44	88	43	5	0	4
White	155	39	76	31	5	0	4
Black	20	5	9	6	0	0	0
Oth/Unk	9	0	3	6	0	0	0
FRANKLIN	4683	702	2796	1023	116	2	44
White	2250	350	1354	463	63	1	19
Black	1928	293	1152	428	36	1	18
Oth/Unk	505	59	290	132	17	0	7
GREENE	320	54	205	51	10	0	0
White	219	35	136	39	9	0	0
Black	77	15	54	8	0	0	0
Oth/Unk	24	4	15	4	1	0	0
HAMILTON	3112	504	1911	600	82	1	14
White	1252	191	770	241	42	1	7
Black	1643	283	1023	302	29	0	6
Oth/Unk	217	30	118	57	11	0	1
HANCOCK	125	25	68	29	1	0	2
White	106	23	58	23	1	0	1
Black	7	1	3	3	0	0	0
Oth/Unk	12	1	7	3	0	0	1
JEFFERSON	26	5	13	8	0	0	0
White	19	4	11	4	0	0	0
Black	6	1	2	3	0	0	0
Oth/Unk	1	0	0	1	0	0	0
KNOX	77	20	41	12	3	0	1
White	74	18	41	11	3	0	1
Black	1	1	0	0	0	0	0
Oth/Unk	2	1	0	1	0	0	0
LAKE	544	104	284	136	17	0	3
White	443	91	214	120	15	0	3
Black	58	5	43	9	1	0	0
Oth/Unk	43	8	27	7	1	0	0

Table 5a. Resident Induced Abortions, 2006 (Page 3)

County/Race	Total	Age Group					
		10-19	20-29	30-39	40-49	50 +	Unk
LICKING	238	39	125	64	5	0	5
White	212	34	111	59	4	0	4
Black	17	3	7	5	1	0	1
Oth/Unk	9	2	7	0	0	0	0
LORAIN	692	120	390	161	19	0	2
White	496	84	274	119	17	0	2
Black	111	20	65	26	0	0	0
Oth/Unk	85	16	51	16	2	0	0
LUCAS	1803	369	1019	360	37	0	18
White	931	168	528	201	26	0	8
Black	655	150	376	115	6	0	8
Oth/Unk	217	51	115	44	5	0	2
MAHONING	702	134	405	142	19	0	2
White	365	61	198	90	15	0	1
Black	311	65	198	45	2	0	1
Oth/Unk	26	8	9	7	2	0	0
MARION	84	27	36	15	5	0	1
White	77	26	32	15	4	0	0
Black	6	1	3	0	1	0	1
Oth/Unk	1	0	1	0	0	0	0
MEDINA	278	57	141	69	10	0	1
White	253	51	128	64	9	0	1
Black	13	4	7	2	0	0	0
Oth/Unk	12	2	6	3	1	0	0
MIAMI	146	35	76	25	8	0	2
White	131	32	66	23	8	0	2
Black	6	1	3	2	0	0	0
Oth/Unk	9	2	7	0	0	0	0
MONTGOMERY	1616	304	920	345	32	0	15
White	757	138	428	166	19	0	6
Black	728	151	417	143	11	0	6
Oth/Unk	131	15	75	36	2	0	3
PORTAGE	374	52	227	80	14	0	1
White	317	47	189	69	12	0	0
Black	42	5	29	6	1	0	1
Oth/Unk	15	0	9	5	1	0	0
RICHLAND	188	36	108	39	5	0	0
White	136	25	79	27	5	0	0
Black	51	11	28	12	0	0	0
Oth/Unk	1	0	1	0	0	0	0



Table 5a. Resident Induced Abortions, 2006 (Page 4)

County/Race	Total	Age Group					
		10-19	20-29	30-39	40-49	50 +	Unk
SANDUSKY	94	17	58	13	5	0	1
White	76	13	45	12	5	0	1
Black	8	0	7	1	0	0	0
Oth/Unk	10	4	6	0	0	0	0
SCIOTO	65	17	35	12	1	0	0
White	60	16	31	12	1	0	0
Black	5	1	4	0	0	0	0
Oth/Unk	0	0	0	0	0	0	0
SENECA	76	16	49	9	1	0	1
White	62	11	40	9	1	0	1
Black	8	2	6	0	0	0	0
Oth/Unk	6	3	3	0	0	0	0
STARK	831	160	478	164	24	0	5
White	648	121	376	125	24	0	2
Black	156	34	92	28	0	0	2
Oth/Unk	27	5	10	11	0	0	1
SUMMIT	1742	326	986	370	49	0	11
White	1056	193	590	236	32	0	5
Black	578	124	340	99	10	0	5
Oth/Unk	108	9	56	35	7	0	1
TRUMBULL	504	92	273	123	15	0	1
White	378	69	205	94	9	0	1
Black	99	18	52	25	4	0	0
Oth/Unk	27	5	16	4	2	0	0
WARREN	251	35	121	84	9	0	2
White	217	33	104	70	8	0	2
Black	15	1	9	4	1	0	0
Oth/Unk	19	1	8	10	0	0	0
WAYNE	162	32	82	36	6	0	6
White	151	27	77	35	6	0	6
Black	7	4	3	0	0	0	0
Oth/Unk	4	1	2	1	0	0	0
WOOD	267	64	153	45	2	0	3
White	219	52	122	40	2	0	3
Black	11	3	8	0	0	0	0
Oth/Unk	37	9	23	5	0	0	0

TABLE 5b

## RESIDENT INDUCED ABORTIONS REPORTED IN OHIO, BY SELECTED COUNTIES, RACE AND AGE, 2006

County/Race	Total	Age Group															
		<15	15	16	17	18	19	15-19	20	21	20-24	25-29	30-34	35-39	40-44	45+	Unk.
OHIO	30809	274	385	677	883	1517	1763	5225	2068	2199	10400	7246	4097	2541	774	47	205
White	17003	103	208	382	480	846	1009	2925	1195	1283	5820	3734	2174	1590	507	37	113
Black	11422	157	155	257	348	561	620	1941	736	766	3854	2924	1548	735	188	5	70
Oth/Unk	2384	14	22	38	55	110	134	359	137	150	726	588	375	216	79	5	22
BUTLER	775	4	7	27	28	38	42	142	36	64	287	152	99	52	30	5	4
White	565	2	5	22	19	29	32	107	29	53	213	102	66	44	23	4	4
Black	138	1	1	3	6	6	6	22	3	7	51	31	20	7	5	1	0
Oth/Unk	72	1	1	2	3	3	4	13	4	4	23	19	13	1	2	0	0
CUYAHOGA	7252	64	92	170	214	359	376	1211	453	450	2306	1816	1049	599	168	10	29
White	2212	10	25	45	52	99	118	339	156	136	707	521	324	229	71	4	7
Black	4456	49	61	113	146	232	230	782	267	274	1423	1166	630	307	78	2	19
Oth/Unk	584	5	6	12	16	28	28	90	30	40	176	129	95	63	19	4	3
FRANKLIN	4683	35	42	71	112	205	237	667	291	330	1599	1197	651	372	113	5	44
White	2250	16	17	39	58	108	112	334	142	183	809	545	257	206	60	4	19
Black	1928	18	21	29	45	81	99	275	120	120	649	503	303	125	36	1	18
Oth/Unk	505	1	4	3	9	16	26	58	29	27	141	149	91	41	17	0	7
GREENE	320	2	3	3	6	20	20	52	28	32	125	80	26	25	10	0	0
White	219	2	1	2	3	14	13	33	20	20	84	52	19	20	9	0	0
Black	77	0	2	1	2	6	4	15	6	10	33	21	5	3	0	0	0
Oth/Unk	24	0	0	0	1	0	3	4	2	2	8	7	2	2	1	0	0

Table 5b. Resident Induced Abortions, 2006 (Page 2)

County/Race	Total	Age Group															
		<15	15	16	17	18	19	15-19	20	21	20-24	25-29	30-34	35-39	40-44	45+	Unk.
HAMILTON	3112	40	41	63	77	125	158	464	218	209	1091	820	384	216	79	4	14
White	1252	8	12	28	24	53	66	183	92	95	465	305	145	96	40	3	7
Black	1643	31	25	32	49	62	84	252	114	103	563	460	198	104	29	0	6
Oth/Unk	217	1	4	3	4	10	8	29	12	11	63	55	41	16	10	1	1
LORAIN	692	7	5	17	16	24	51	113	39	61	248	142	98	63	16	3	2
White	496	4	3	11	12	14	40	80	31	46	170	104	66	53	14	3	2
Black	111	2	1	4	4	5	4	18	5	9	41	24	21	5	0	0	0
Oth/Unk	85	1	1	2	0	5	7	15	3	6	37	14	11	5	2	0	0
LUCAS	1803	23	23	42	54	110	117	346	132	156	634	385	234	126	33	4	18
White	931	7	11	16	27	52	55	161	73	74	316	212	116	85	23	3	8
Black	655	14	12	19	21	43	41	136	46	61	250	126	88	27	5	1	8
Oth/Unk	217	2	0	7	6	15	21	49	13	21	68	47	30	14	5	0	2
MONTGOMERY	1616	17	27	41	53	79	87	287	113	116	551	369	209	136	30	2	15
White	757	2	15	20	21	32	48	136	53	64	264	164	94	72	17	2	6
Black	728	15	12	19	30	39	36	136	49	47	245	172	89	54	11	0	6
Oth/Unk	131	0	0	2	2	8	3	15	11	5	42	33	26	10	2	0	3
SUMMIT	1742	23	25	36	54	81	107	303	123	125	574	412	216	154	47	2	11
White	1056	9	14	21	28	50	71	184	76	67	349	241	134	102	30	2	5
Black	578	14	11	13	24	30	32	110	41	53	200	140	68	31	10	0	5
Oth/Unk	108	0	0	2	2	1	4	9	6	5	25	31	14	21	7	0	1

TABLE 6

## INDUCED ABORTIONS REPORTED IN OHIO, BY COUNTY OF OCCURRENCE, 1996 - 2006

County of Occurrence	2006	2005	2004	2003	2002	2001	2000	1999	1998	1997	1996
Total Abortions Reported	32936	34128	34242	35319	35830	37464	38140	37041	37479	38242	36530
Cuyahoga County	10161	10797	10989	11486	11801	12534	12706	12607	12649	12032	11360
Erie County	0	0	0	0	0	0	0	0	0	0	1
Franklin County	6778	6728	6856	6869	6253	6556	6760	5979	6333	6614	4900
Greene County	424	218	270	0	0	0	0	0	0	1	0
Hamilton County	5583	6051	6431	6392	6961	7216	6955	6916	6817	6962	6624
Licking County	0	0	0	1	0	0	0	0	0	0	1
Lucas County	2851	2691	2425	2383	2366	2445	2665	2846	2856	3112	3258
Mahoning County	820	835	912	955	1049	1132	1223	1096	1093	1245	1268
Miami County	0	0	0	0	0	0	0	0	2	1	0
Montgomery County	2618	2752	2688	2976	3011	3398	3874	3921	4202	4369	4955
Stark County	0	0	0	0	0	0	1	0	0	1	1
Summit County	3701	4056	3671	4257	4389	4183	3956	3675	3527	3878	4159
Trumbull County	0	0	0	0	0	0	0	1	0	0	0
Ohio County Unknown	0	0	0	0	0	0	0	0	0	27	3

TABLE 7

## INDUCED ABORTIONS REPORTED IN OHIO, BY METHOD OF TERMINATION AND COUNTY OF OCCURRENCE, 2006

County of Occurrence	Method of Termination											
	TOTAL	Curretage		D & Ext	D & Evac	Saline Instill	Prostag Instill	Hyster- otomy	Hyster- ectomy	Other	Non Surgical	Not Reported
		Suction	Sharp									
OHIO	32936	24439	137	314	2753	73	249	5	3	541	4673	288
CUYAHOGA	10161	7651	115	36	1295	9	35	2	2	529	839	72
FRANKLIN	6778	5243	4	60	204	23	156	0	0	4	1047	78
GREENE	424	0	0	0	0	2	0	0	0	0	420	2
HAMILTON	5583	4985	5	33	368	12	41	1	0	3	131	30
LUCAS	2851	1850	2	51	188	4	3	0	1	1	704	61
MAHONING	820	740	0	0	0	0	0	0	0	0	78	2
MONTGOMERY	2618	2157	7	21	346	4	4	1	0	2	68	27
SUMMIT	3701	1813	4	113	352	19	10	1	0	2	1386	16

TABLE 8

TOTAL INDUCED ABORTIONS REPORTED IN OHIO, BY  
GESTATIONAL AGE, 2006

Gestational Age	Number	Percent
Total Abortions Reported	32936	100.0
Less than 9 Weeks	17955	54.5
9 - 12 Weeks	9862	29.9
13 - 19 Weeks	3963	12.0
20 Weeks	184	0.6
21 - 24	483	1.5
25 - 36 Weeks	27	0.1
Unknown	462	1.4

TABLE 9

RESIDENT INDUCED ABORTIONS IN OHIO, BY AGE OF WOMEN OBTAINING ABORTION  
AND BY NUMBER OF PRIOR INDUCED ABORTIONS, 2006

Age Group	Total	Prior Induced Abortion						Unk
		0	1	2	3	4	5+	
Total Abortions	30809	14733	7963	3352	1243	454	372	2692
Under 15	274	215	12	1	1	0	0	45
15-19	5225	3731	699	109	18	2	0	666
20-24	10400	5292	2742	960	299	81	43	983
25-29	7246	2717	2176	1089	451	172	137	504
30-34	4097	1382	1280	680	289	117	113	236
35-39	2541	939	775	395	146	60	57	169
40-44	774	331	213	99	33	19	18	61
45-59	47	24	13	4	4	1	0	1
Unknown	205	102	53	15	2	2	4	27

TABLE 10a

TOTAL INDUCED ABORTIONS IN OHIO WITH POST-ABORTION COMPLICATIONS, BY  
TYPE OF COMPLICATION, 2006

(DATA SOURCE IS 'POST-ABORTION CARE REPORT FOR COMPLICATIONS')

Complication Type	Number of Complications	Percent of Abortions with Complications
Perforation of Uterus	1	0.00%
Cervical Laceration	0	0.00%
Hemorrhage	16	0.05%
Incomplete Abortion	26	0.08%
Hematometra	12	0.03%
Anesthetic	1	0.00%
Failed Abortion	3	0.01%
Infection	17	0.05%
Death	0	0.00%
Other	6	0.02%
Total Number of Complications*	82	Not Applicable
Total Abortions with One or More Complications	58	0.18%



TABLE 10b

TOTAL INDUCED ABORTIONS IN OHIO WITH POST-ABORTION COMPLICATIONS, BY  
TYPE OF COMPLICATION, 2006

(DATA SOURCE IS 'CONFIDENTIAL ABORTION REPORT')

Complication Type	Number of Complications	Percent of Abortions with Complications
Perforation of Uterus	0	0.00%
Cervical Laceration	57	0.17%
Hemorrhage	4	0.01%
Incomplete Abortion	5	0.02%
Hematometra	1	0.00%
Anesthetic	1	0.00%
Failed Abortion	0	0.00%
Infection	4	0.01%
Death	0	0.00%
Other	7	0.02%
Total Number of Complications*	79	Not Applicable
Total Abortions with One or More Complications	76	0.23%

\* Note: An abortion may have more than one reported complication. Complications reported in this table may or may not also be reported in Table 10a.

TABLE 11

TOTAL INDUCED ABORTIONS IN OHIO WITH POST-ABORTION COMPLICATIONS, BY  
TYPE OF COMPLICATION AND GESTATION PERIOD, 2006

(DATA SOURCE IS POST-ABORTION CARE REPORT FOR COMPLICATIONS')

Complication Type	Total	Gestation Period				Unk
		< 9 Wks	9-12 Wks	13-19 Wks	20+ Wks	
(Number of Complications)						
Perforation of Uterus	1	0	0	0	1	0
Cervical Laceration	0	0	0	0	0	0
Hemorrhage	16	3	5	5	2	1
Incomplete Abortion	26	13	5	5	2	1
Hematometra	12	3	3	4	1	1
Anesthetic	1	0	0	0	1	0
Failed Abortion	3	2	0	1	0	0
Infection	17	10	5	2	0	0
Death	0	0	0	0	0	0
Other/Unreported	6	3	1	0	2	0
Total Number of Complications*	82	34	19	17	9	3
Total Abortions with One or More Complications	58	28	13	12	3	2

NOTE: An abortion may have more than one reported complication. Complications reported in this table may or may not also be reported in Table 10b.

TABLE 12

TOTAL INDUCED ABORTIONS IN OHIO WITH POST-ABORTION COMPLICATIONS, BY TYPE OF COMPLICATION  
AND TERMINATION METHOD, 2006

(DATA SOURCE IS 'CONFIDENTIAL ABORTION REPORTS')

Method of Termination	Complication Type									Total Complications	Abortions w/ One or More Complications
	Hemorrhage	Perforation of Uterus	Cervical Laceration	Infection	Anesthetic	Failed Abortion	Incomplete Abortion	Hematometra	Other		
A. Suction Curettage	4	0	40	3	0	0	2	1	1	51	51
B. Sharp Curettage	0	0	0	0	0	0	0	0	0	0	0
C. Dilation & Extraction	0	0	1	0	0	0	0	0	0	1	1
D. Dilation & Evacuation	0	0	4	0	0	0	0	0	3	7	5
E. Saline/Urea Instillation	0	0	1	0	0	0	0	0	0	1	1
F. Prostaglandin Instill.	0	0	10	0	1	0	1	0	1	13	13
G. Hysterotomy	0	0	0	0	0	0	0	0	0	0	0
H. Hysterectomy	0	0	0	0	0	0	0	0	0	0	0
I. Other/Unknown	0	0	1	0	0	0	0	0	0	1	1
J. Medical/Nonsurgical	0	0	2	1	0	0	2	0	2	7	6

Source: Confidential Abortion Reports. Numbers are comparable to Table 10b, but not Tables 10a and 11 because those tables are based on Post-Abortion Care Reports for Complications. Complications from the two data sources cannot be summed.

# Confidential Abortion Report

## Ohio Department of Health

(Required pursuant to O.A.C. 3701-47-03)

1. Facility name:	For State Use Only	
2. Address:	Zip code:	

### GENERAL INFORMATION

3. Zip code of address of the woman:	Ohio County of Residence (specify):	Non-Ohio State of Residence (specify):
4. Woman's Identification number:	5. Age of woman:	6. Education: Specify highest number of years completed
7. Marital status:	8A. Race or ethnic group:	8B. Is woman Hispanic?
<input type="checkbox"/> Never married <input type="checkbox"/> Married <input type="checkbox"/> Separated	<input type="checkbox"/> White <input type="checkbox"/> Black <input type="checkbox"/> American Indian	<input type="checkbox"/> Yes <input type="checkbox"/> No
<input type="checkbox"/> Divorced <input type="checkbox"/> Widowed <input type="checkbox"/> Unknown	<input type="checkbox"/> Asian/Pacific Islander <input type="checkbox"/> Other /Unknown (specify) _____	

### MEDICAL HISTORY

9. Number of living children:	10. Date of last live birth:
	m m d d y y
11. Number of prior abortions: Spontaneous Induced	12. Date of last Induced abortion:
	m m d d y y
13. Number of previous pregnancies:	14. Contraceptive History: Was the woman practicing contraception at the time of conception?
	<input type="checkbox"/> Yes <input type="checkbox"/> No <input type="checkbox"/> Unknown
15. Method. If yes to number 14, what was the method used?:	16. First day of last menstrual period:
<input type="checkbox"/> Pill, Norplant, Depo-Provera <input type="checkbox"/> Condom, Jelly, Cervical Cap, Sponge, Insert <input type="checkbox"/> Rhythm, Coitus Interruptus	m m d d y y
<input type="checkbox"/> Surgical <input type="checkbox"/> Other (specify) _____	
	17. Rh type of woman:
	<input type="checkbox"/> Negative <input type="checkbox"/> Positive

### MEDICAL PROCEDURE

18. Date of Termination:	19A. Clinical Estimate of Gestation in weeks:	19B. If 19A is 14 or greater, were discharge instructions given as per O.A.C. 3701-47-02? <input type="checkbox"/> YES <input type="checkbox"/> NO
20. Method of Termination:		
<input type="checkbox"/> Suction Curettage <input type="checkbox"/> Saline/Urea Installation <input type="checkbox"/> Medical (NonSurgical) Specify Medication(s) _____	<input type="checkbox"/> Sharp Curettage <input type="checkbox"/> Prostaglandin Installation <input type="checkbox"/> Hysterotomy	<input type="checkbox"/> Dilation & Extraction <input type="checkbox"/> Hysterectomy <input type="checkbox"/> Dilation & Evacuation <input type="checkbox"/> Other (specify) _____
21. Medical condition of the woman at the time of the abortion:	22. Type of procedure done immediately after the abortion:	
<input type="checkbox"/> Good <input type="checkbox"/> Fair <input type="checkbox"/> Other (specify) _____	<input type="checkbox"/> Sterilization <input type="checkbox"/> None <input type="checkbox"/> Other (specify) _____	
23. Post Abortion Complications (Indicate all): <input type="checkbox"/> None	24. Type of family planning recommended:	
<input type="checkbox"/> Hemorrhage <input type="checkbox"/> Perforation of uterus <input type="checkbox"/> Cervical laceration <input type="checkbox"/> Infection <input type="checkbox"/> Anesthetic <input type="checkbox"/> Failed Abortion <input type="checkbox"/> Incomplete Abortio <input type="checkbox"/> Hematometra <input type="checkbox"/> Death <input type="checkbox"/> Other (specify) _____	<input type="checkbox"/> Pill, Norplant, Depo-Provera <input type="checkbox"/> Condom, Jelly, Cervical Cap, Sponge, Insert <input type="checkbox"/> Rhythm, Coitus Interruptus <input type="checkbox"/> Surgical <input type="checkbox"/> Other (specify) _____	
25. Type of Counseling given: <input type="checkbox"/> Psychological <input type="checkbox"/> Social Service <input type="checkbox"/> Pastoral <input type="checkbox"/> Medical <input type="checkbox"/> Other (specify) _____ <input type="checkbox"/> None		
26. Physician's name (Type or print):	M.D. D.O.	Physician's Signature: Date:

Send completed forms to:  
**OHIO DEPARTMENT OF HEALTH,  
CONFIDENTIAL REPORTS A,  
P.O. BOX 118, COLUMBUS, OHIO 43216**

## Post Abortion Care Report For Complications

# Ohio Department of Health

(Required Pursuant to O.A.C. 3701-47-03)

**To be completed by the physician providing post-abortion care**

**State Use Only**

1. Facility where post-abortion care was provided:			
2. Street or Post Number	City	State	Zip

3. Date of Abortion: Month Day Year \_\_\_\_\_

4. Weeks of Gestation: \_\_\_\_\_

5A. Facility where Abortion was performed: \_\_\_\_\_

5B Address of Facility: Street or Post Number City State Zip

6. Date Post Abortion Care Began: Month Day Year \_\_\_\_\_

7. Patient Number: \_\_\_\_\_

8. Complication(s) (Please check all that apply):

<input type="checkbox"/> Hemorrhage	<input type="checkbox"/> Anesthetic	<input type="checkbox"/> Hematometra	<input type="checkbox"/> Perforation of Uterus
<input type="checkbox"/> Failure of Amniotic Fluid Ex	<input type="checkbox"/> RH Incompatibility	<input type="checkbox"/> Cervical Laceration	<input type="checkbox"/> Failed Abortion
<input type="checkbox"/> Infection	<input type="checkbox"/> Incomplete Abortion	<input type="checkbox"/> Death	<input type="checkbox"/> Other (Specify) _____

9. Duration of treatment: (Indicate number of hours or days) \_\_\_\_\_ Hours \_\_\_\_\_ Days

<b>10. Remarks:</b>			
<b>11A. Physician's name providing care</b> (Type or print)		<b>11B. Physicians Signature:</b>	<b>M.D.</b> <b>D.O.</b>
			<b>Date:</b>

**Send Completed Forms to: Ohio Department of Health  
Confidential Reports A  
P O Box 118  
Columbus OH 43216**

HEA 1806  
Rev 4/96