

Building Transformative School Health Partnerships

June 2024

Sara Bode, MD—Medical Director, School Health Services, Nationwide Children's Hospital
SchoolHealthPD@nationwidechildrens.org



The development of this project was funded by the Ohio Department of Health through funds made available from the American Rescue Plan Act of 2021 (P.L. 117-2).

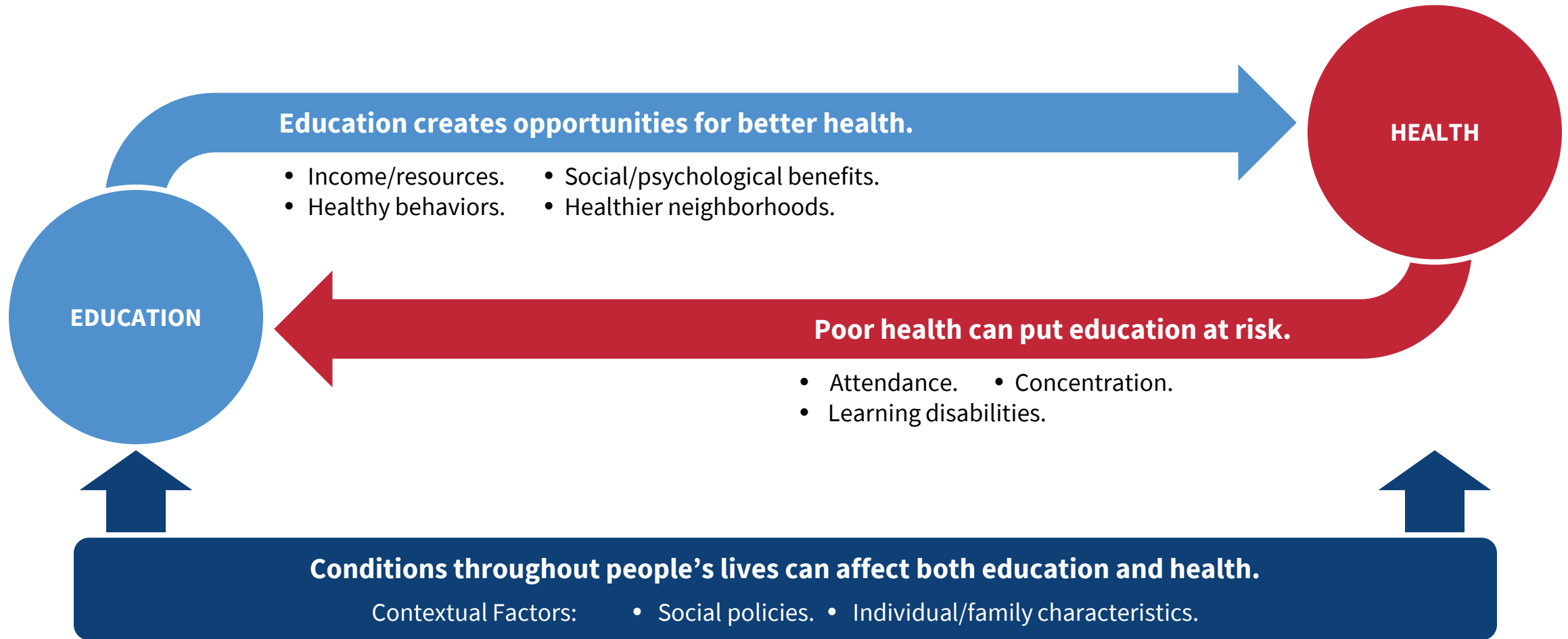


This training is one of six funded by the Ohio Department of Health and developed in partnership with Nationwide Children's Hospital.

Objectives:

- Express the link between education and health.
- Understand how school nursing and school-based health centers offer complementary services.
- Identify key questions to ask when evaluating a new partnership opportunity.

Relationship between Health and Education



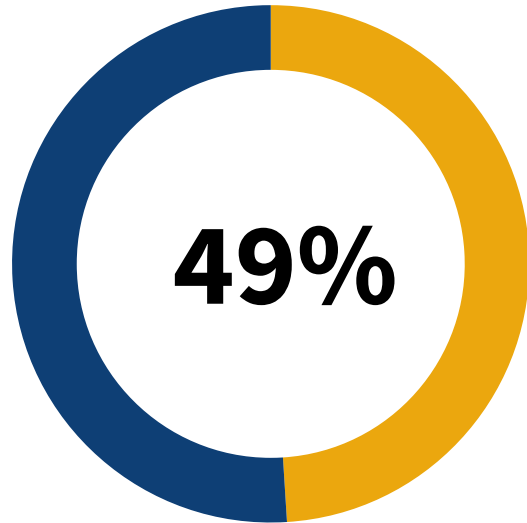
Graphic adapted from:

Virginia Commonwealth University. (2015, Feb. 13). *Why Education Matters to Health: Exploring the Causes*. Center on Society and Health.

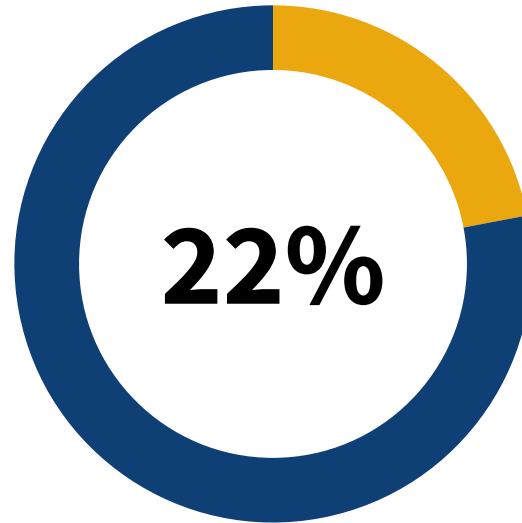
<https://bit.ly/3LEuLlQ>



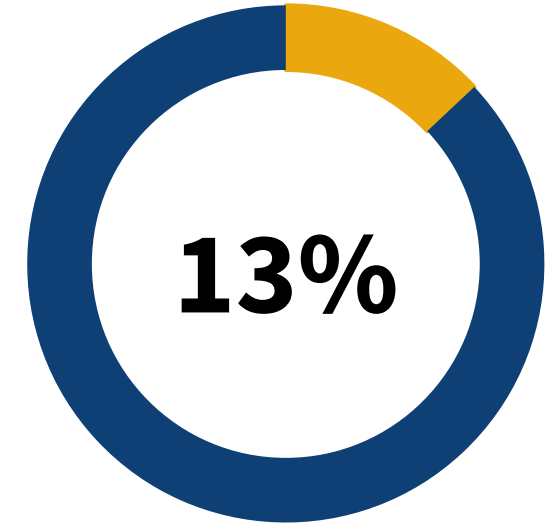
School-Age Health Status in Ohio



Had a medical home to provide a usual source of care.



Did not have a place to go or consult when they were sick.



Reported being depressed or having anxiety.

Source:

Ohio School-Based Health Alliance. (2023). *School-based health care in Ohio: A closer look at school-based health centers (SBHCs)*.



**Department of
Health**



NATIONWIDE CHILDREN'S
When your child needs a hospital, everything matters.

School-Age Health Status in Ohio

Only 19.58% of students who failed a school vision screening followed up with an eye doctor.



Microsoft Office Stock Photography

48% of students screened at school had a history of tooth decay.

20% had untreated cavities.



Microsoft Office Stock Photography

Sources:

--Ohio Department of Health (n.d.). *Children's Vision Program 2019-2021 Annual Report*.

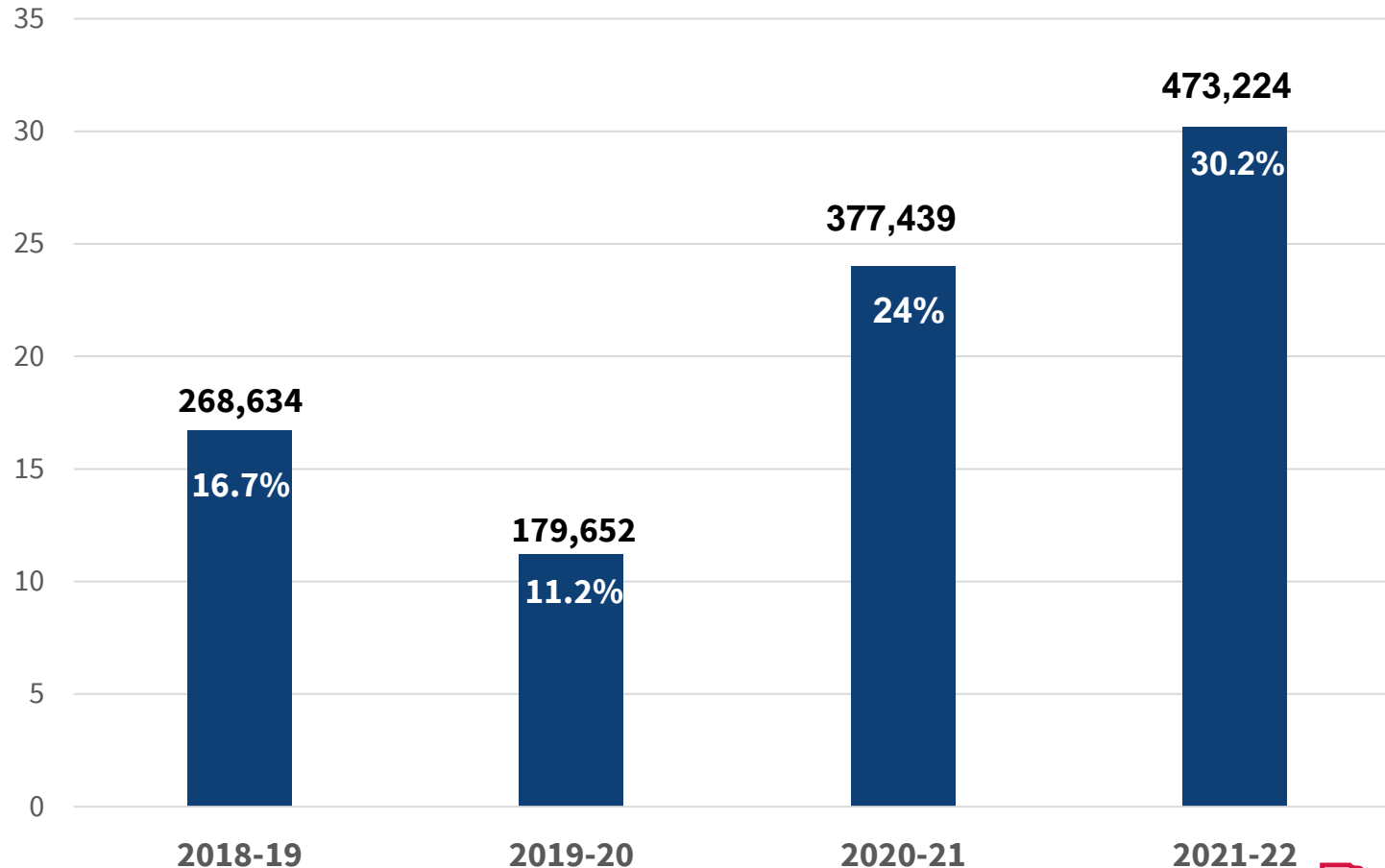
<https://bit.ly/ODH-Vision>.

--Ohio Department of Health (2022, January 7). *Oral Health Survey of Ohio's Schoolchildren*.

<https://bit.ly/ODH-Oral-Health>.



Chronic Absenteeism Trend in Ohio



A student is considered chronically absent if they miss at least 10% of instructional time (excused or unexcused) for any reason. - The Ohio Department of Education and Workforce

Source:
Ohio Department of Education and Workforce,
2022



**Department of
Health**



Being Present Routinely Counts!

Students who have never
been chronically absent are
6.7 times more likely to
achieve reading success by
third grade



Students who were never
chronically absent during
high school are **9 times**
more likely to graduate
on time

Solution? School Health!

Overarching Goal:

Develop authentic partnerships by leveraging integrated models of care to eliminate non-academic barriers to learning.



Intervene Early

American School Health Association Definition:

School Health is the comprehensive effort of developing, implementing, and evaluating services, both within the school and the community, that provide each and every student with the resources needed to thrive within a healthful environment.

Expected Outcomes

- Increased attendance.
- Increased seat time.
- Increased graduation rates.
- Increased GPA.
- Decreased discipline/suspensions.



- Increased immunization compliance.
- Increased access and identified medical home.
- Improved asthma outcomes.
- Decreased risky behaviors.



Source:
American Journal of Preventive Medicine, 2016
(includes 46 studies)



Bridging the Gap



Access to Care



- Uncontrolled asthma.
- Lacking recent well-child care.
- Vaccine exclusion.
- Overuse of the emergency room.
- Chronic absenteeism.
- ADHD without treatment plan.
- Noncompliance with treatment plans.





Department of
Health



NATIONWIDE CHILDREN'S®
When your child needs a hospital, everything matters.

School-Based Health Centers in Ohio

 DO NOT	 DO
Replace the role of school nurses.	→ Work in collaboration with school nurses to coordinate services, close referral loops, and ensure the provision of comprehensive healthcare services.
Take away parental rights.	→ View parents as instrumental in the care of their children and follow state consent laws.
Replace an existing relationship with a child's primary care provider or medical home.	→ Communicate with the child's existing primary care provider about care provided at school.
Place additional burdens on teachers and school administrators.	→ Provide Supports to teachers and school administrators.
Provide additional, not needed care that increases healthcare costs.	→ Reduce costs by providing critical healthcare services to students who do not have access.

Source:
Ohio School-Based Health Alliance. (2023). *School-based health care in Ohio: A closer look at school-based health centers (SBHCs)*.



Partnerships for Student Success

SCHOOL NURSING

Direct Nursing Services.
Triage.
Medication Administration.
Health Care Education.
Emergency Plans.
Training School Staff.
Health Assessments.
School Health Environment.
Health Policies and Programs.



SCHOOL-BASED HEALTH

Well-Child Care Physicals.
Primary Care Mental Health.
Laboratory Services.
Sick Visits.
Immunizations.
Teen Health.
Chronic Disease Treatment.
Referrals for Specialty Care.



Department of
Health



NATIONWIDE CHILDREN'S®
When your child needs a hospital, everything matters.

Getting Buy-In!

- School nurses are often the most equipped to understand the unmet physical and mental health needs of students in their buildings.
- Utilizing needs assessment resources can tell the story!
- Data and stories help to get buy-in from administration.

Needs Assessment Tools

- [Ohio Healthy Students Profiles.](#)




- [TEAMS: Training, Education, Assistance, Mentorship and Support.](#)










- [Ohio School Report Cards.](#)



Ohio Healthy Student Profiles





[Home](#)
[ADMINISTRATORS ▼](#)
[TEACHERS](#)
[PARENTS](#)
[TOPICS ▼](#)
[HOW DO I? ▼](#)
[ABOUT](#)

Home > Integrated Student Supports > School Wellness > Ohio Healthy Students Profiles

Ohio Healthy Students Profiles

[Future Forward Ohio](#) is the Department's strategic priorities to help students recover from the impacts of the COVID-19 pandemic. Student wellness, focuses on addressing barriers that prevent students from engaging in learning and education is well documented. [Healthy People 2030](#) emphasizes that a strong educational experience creates a foundation for individual's health through increased income, healthy behaviors, social and psychological benefits and health. Poor health can affect educational achievement by causing poor attendance, concentration problems and learning difficulties.

Through its continued partnership with the Ohio Department of Medicaid, the Ohio Department of Education has created the Ohio Healthy Students Profiles as a data resource for needs assessments and planning. The profiles describe health care and educational indicators for Medicaid-participating students. This information can be a resource for educators, parents, and community stakeholders who influence the policies and programs that support student wellness in Ohio.

There are two ways to access the data:

- » Use the search application shown below to find the profile for a selected school or district;
- » [Download an Excel spreadsheet of data](#) for all schools, districts, and counties; or

Interactive Dashboard

This information is best viewed on a desktop computer and may require a moment for initial loading.

1. SELECT County

Athens

2. SELECT District Name or School Type

Alexander Local

3. SELECT School Name

Full District: Alexander Local

DISPLAYED:

.Full District: Alexander Local
045906
Grades *****
County/State comparison: All Grades
Total head count: 1464
Medicaid participants: 590
40.3%

Ohio Healthy Students Profile: 2021-2022 School Year

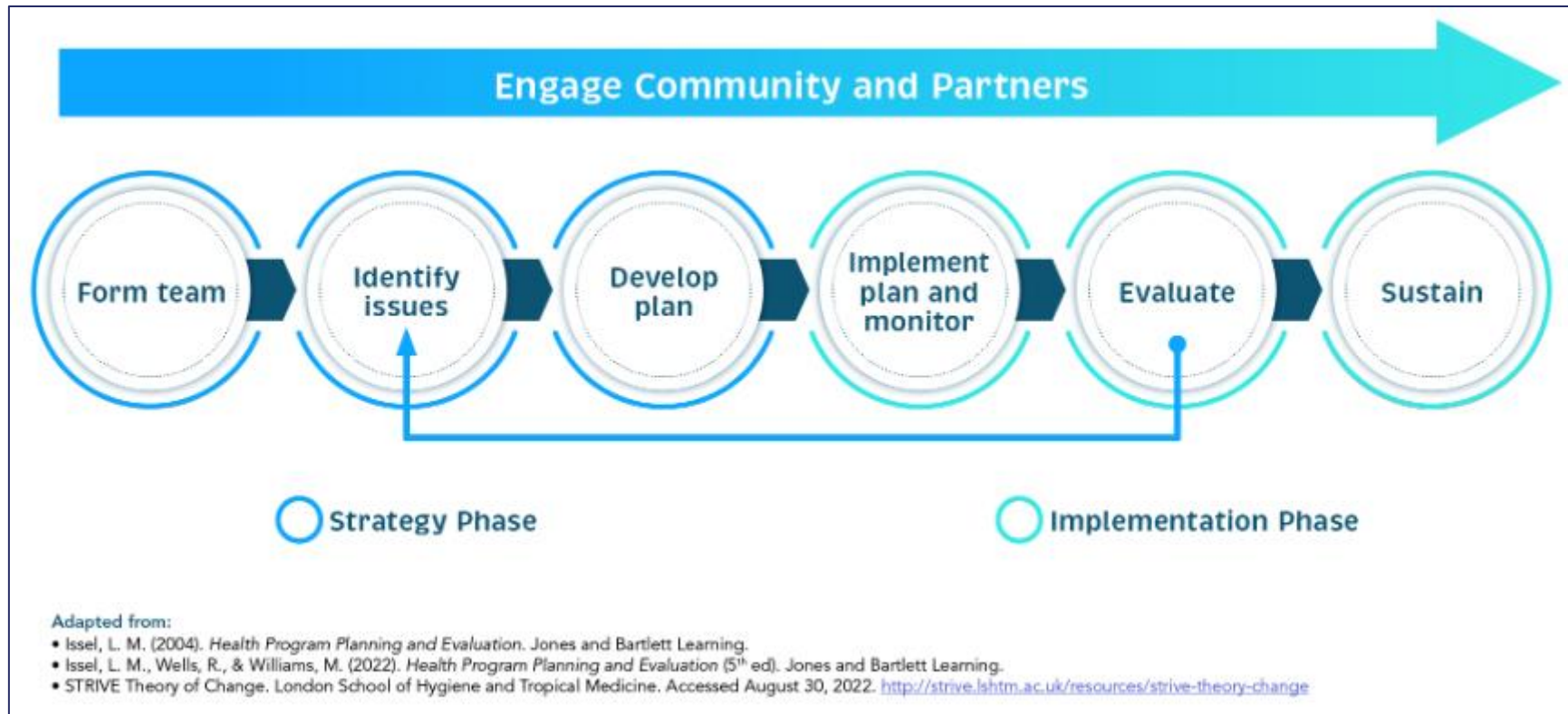
#	Measure Group	Measure Name	Denom.	Count	Pct.	County	State
1	Overview	Medicaid Rate	1,464	590	40.3	45.6	41
2	Healthcare Interactions	Comprehensive Well-Child Visit	590	182	30.8	37.5	41.1
3	Healthcare Interactions	Primary Care Physician Visit	590	459	77.8	81.6	70.6
4	Healthcare Interactions	Primary Care Physician Visit, within 2 Years	590	521	88.3	89.9	83.1
5	Healthcare Interactions	Dental Care Visit	590	245	41.5	43.7	42.3
6	Healthcare Interactions	Dental Care Visit, within 2 Years	590	327	55.4	58	55.8
7	Healthcare Interactions	Trip to Emergency Room	590	168	28.5	32.7	31.1
8	Healthcare Interactions	Overnight Stay at General Hospital				1.1	1.7
9	Health Conditions	Asthma	590	27	4.6	3.5	3.9
10	Health Conditions	Diabetes				0.3	0.6
11	Health Conditions	Any Behavioral Health Condition	590	233	39.5	38.8	26.9
12	Health Conditions	Serious Mental Illness	590	98	16.6	15.8	9.4
13	Health Conditions	Autism				2	1.6
14	Health Conditions	Major Depression	590	32	5.4	5.3	3
15	Health Conditions	Depression (All)	590	41	6.9	7.8	5.1
16	Health Conditions	Anxiety	590	91	15.4	16.1	8.5
17	Health Conditions	Attention-Deficit/Hyperactivity Disorder	590	92	15.6	14.3	11.3
18	Health Conditions	Substance Use Disorder	590	14	2.4	1.3	0.6
19	Education Indicators	Demonstrating Readiness for Kindergarten			20.8	19.3	22.9
20	Education Indicators	Proficient on English Language Arts State Test	287	128	44.6	40.2	44.2
21	Education Indicators	Proficient on Mathematics State Test	351	142	40.5	30.1	33.7
22	Education Indicators	On-Time Graduation (2021 Cohort)	50	41	82	84.8	76.6
23	Education Indicators	Chronic Absenteeism	545.32	236.21	43.3	47.1	43.7
24	Education Indicators	Disciplinary Incidents per Student FTE	546.57	69	12.6	14.7	35.9
25	Staff Indicators	District Counselors (per 100 Student FTE)	1,423.82	3	0.21	0.24	0.25
26	Staff Indicators	District Nurses (per 100 Student FTE)	1,423.82	1	0.07	0.14	0.13
27	Staff Indicators	District Psychologists (per 100 Student FTE)	1,423.82	0.35	0.02	0.08	0.12
28	Staff Indicators	District Social Workers (per 100 Student FTE)					0.04

Ohio School Report Cards

Students Per Educator in Your District

	District	Similar District	State
School Nurses	1,420 : 1	1,210 : 1	782 : 1
Library or Media Specialists	NC	4,841 : 1	3,223 : 1
Paraprofessionals	55 : 1	309 : 1	132 : 1
Mental Health Professionals			
School Counselors	473 : 1	526 : 1	390 : 1
School Psychologists	28,400 : 1	1,862 : 1	816 : 1
Social Workers	NC	3,339 : 1	2,054 : 1

TEAMS to Enhance School Health Services



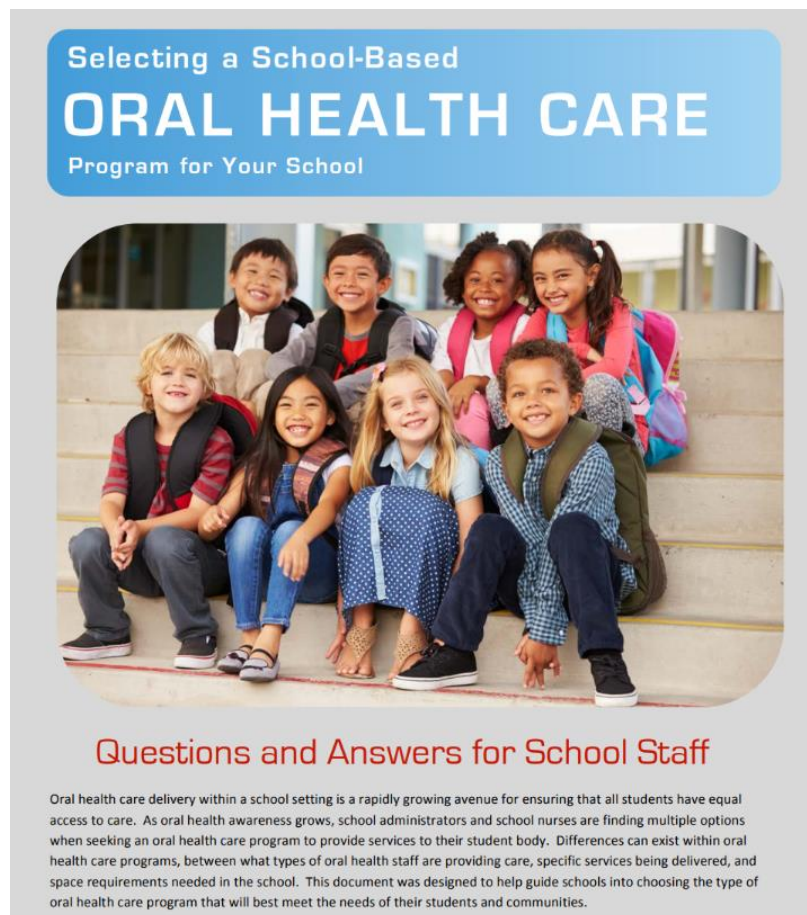
School Health Services—What to Expect

School District	Healthcare Partner
If a student needs something beyond the scope of the School Nurse, a referral can be made to the healthcare partner for evaluation, testing, and additional services.	Medical Assistant in school-based health center follows up with families who have expressed interest to schedule a well visit.
Multiple channels of communication (school website, social media, flyers on campus) reference the services available to students.	Healthcare organization provides regular updates to school communications staff on services available, hours, and any other relevant info.
Coaches and PE teachers make referrals to healthcare partner for well visits, injuries, or other relevant services.	Provider team attends sporting events to engage with community and inform families of services available to their children at school.

Evaluating a New Partner

- What do your students need and what can the healthcare partner provide?
- What will be the scope of service? Will comprehensive care be provided to students?
- What type of service will be offered? Options may include:
 - Primary care.
 - Immunization clinics.
 - Dental.
 - Vision.
 - Behavioral health.

Dental Example



- What is a community-based oral health program and why is that important?
- Do they have local references?
- Who owns the program and how is it funded?
- Eligibility for program? Types of insurance accepted? Care for uninsured? What is the billing process?
- What are the treatment options?
- How is follow-up and emergency care provided?
- What are the school's responsibilities and how much time will that take?
- What is the process for consent?
- What oral health data and records will be created? How is this shared with parents and the school after the appointment?

Primary Care Example



Microsoft Office Stock Photography

Scope of practice

- What is the provider's approach to chronic disease management?
- Are vaccines available?
- What services are not offered?
- Can the provider complete lab work on-site?
- Are mental health screenings offered? If so, what does the referral and follow-up process look like?
- Are primary care providers comfortable prescribing mental health medication?
- Are there options for medication delivery?
- Are providers equipped to see infants and young children if siblings need primary care?

Primary Care Example



Microsoft Office Stock Photography

Billing

- Does the provider use primary care or urgent care billing?
- What health insurance will be accepted for services?
- How are patients and families without insurance addressed?

Communication

- What does communication look like before and after visits?
- Is the provider able to share information with other local providers?
- How are After Visit Summaries shared?

Thank You

Sara Bode, MD—Medical Director, School Health Services
Nationwide Children's Hospital

SchoolHealthPD@nationwidechildrens.org



**Department of
Health**



NATIONWIDE CHILDREN'S®
When your child needs a hospital, everything matters.



**Department of
Health**



NATIONWIDE CHILDREN'S®

When your child needs a hospital, everything matters.