

# Asthma, Youth & Tobacco 2021

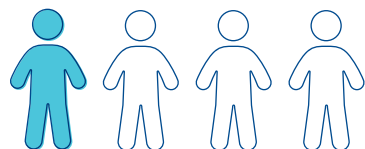
## Middle School



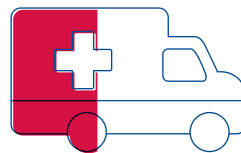
Department of  
Health  
Ohio Youth Surveys

YRBS/YTS  
Ohio Youth Risk Behavior Survey/  
Youth Tobacco Survey

### ASTHMA PREVALENCE:



**24 %** of middle school students have asthma (**almost 1 in 4**).



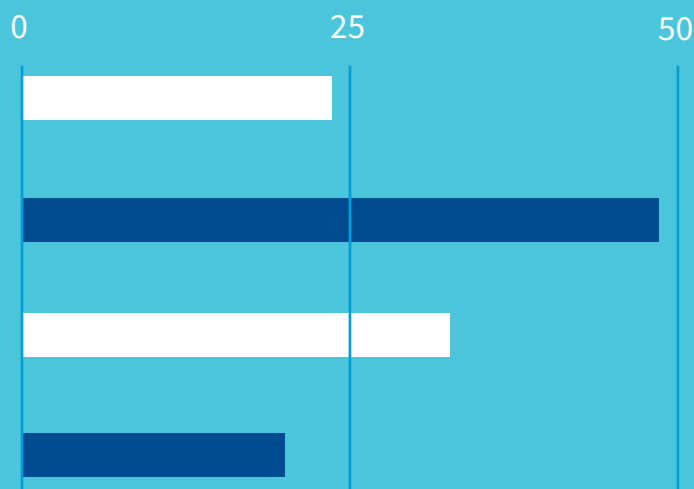
**36 %** of middle school students with asthma went to an emergency room or urgent care center due to their asthma in the past year.



**There is no difference** in asthma rates between boys and girls.

Hispanic/Latino students and students of “Other”\* Races are **more likely to report** having asthma than White students.

**There are differences in asthma rates among racial and ethnic groups.**



**24 %** of Black/African American middle school students report having asthma.

**49 %** of Hispanic/Latino middle school students report having asthma.

**33 %** of middle school students of “Other” \* Races report having asthma.

**20 %** of White middle school students report having asthma.

\*“Other” races includes American Indian, Alaska Native, Asian, Native Hawaiian, Other Pacific Islander & Multiple Races – Non-Hispanic.

### TOBACCO USE:

**There are no differences among students with asthma and all middle school students:**

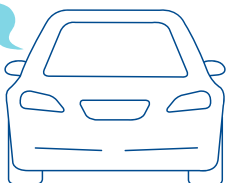
- having ever tried cigarettes.
- current combustibles tobacco use (cigarettes, cigars, & hookahs).
- current non-combustibles tobacco use (vapes & smokeless).



## EXPOSURE TO SMOKING AND TOBACCO:

There is an overall difference in secondhand smoke exposure among those with asthma and middle school students.

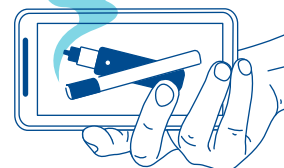
Middle school students with asthma are  
**26%**  
MORE LIKELY to be exposed to  
secondhand smoke  
in a vehicle than  
their peers.



Middle school students with asthma are  
**27%**  
MORE LIKELY to be exposed to  
secondhand smoke  
on school property  
than their peers.



Middle school students with asthma are  
**19%**  
MORE LIKELY to have seen ads or  
promotions for  
cigarettes or other  
tobacco products  
than their peers in  
the last 30 days.



The increase in exposure to secondhand smoke and ads/promotions for cigarettes or other tobacco products among middle school students with asthma, **is the same across race, ethnicity and sex.**



## MENTAL HEALTH AND WELLBEING:



Middle school students with asthma report  
**31%**  
more depressive  
symptoms in the  
past year than  
their peers.



Middle school students with asthma are  
**23%**  
more likely to  
have ever been in  
a physical fight  
at school than  
their peers.



Middle school students with asthma are  
**23%**  
more likely to  
report being  
bullied at school  
than their peers.



Middle school students with asthma report  
**16%**  
poorer mental  
health than  
their peers.

The relations between asthma and poor mental health and wellbeing among middle school students **are consistent for all races, ethnicities, and sexes.**

