

Ohio Department of Health Seasonal Influenza Activity Summary

MMWR Week 12

March 15th – March 21st, 2020

Current Influenza Activity:

Current Ohio Activity Level (Geographic Spread) – *Widespread*

Definition: Increased ILI in at least half of the regions AND recent (within the past 3 weeks) lab confirmed influenza in the state.

During MMWR Week 12, public health surveillance data sources indicate Moderate intensity for influenza-like illness (ILI) in outpatient settings reported by Ohio's sentinel providers. The percentage of emergency department visits with patients exhibiting constitutional symptoms increased and are still above baseline levels statewide; fever and ILI specified ED visits increased and are also still above baseline levels. Reported cases of influenza-associated hospitalizations are above the seasonal threshold*. There were 537 influenza-associated hospitalizations reported during MMWR Week 12.

Ohio Weekly Influenza-associated Hospitalizations by Ohio Public Health Region

Central	74
East Central	101
Northeast	119
Northwest	45
Southeast	46
Southwest	70
West Central	82
Total	537

Ohio Influenza Activity Summary Dashboard:

Data Source	Current week value	Percent Change from last week ¹	# of weeks ²	Trend Chart ³
Influenza-like Illness (ILI) Outpatient Data (ILINet Sentinel Provider Visits)	3.40%	14.86%	↑ 1	
Thermometer Sales (National Retail Data Monitor)	5096	-49.02%	↓ 1	
Fever and ILI Specified ED Visits (EpiCenter)	5.61%	33.25%	↑ 3	
Constitutional ED Visits (EpiCenter)	15.94%	1.98%	↑ 2	
Confirmed Influenza-associated Hospitalizations (Ohio Disease Reporting System)	537	-7.25%	↓ 4	
Outpatient Medical Claims Data ⁴	3.62%	-21.13%	-	

¹Interpret percent changes with caution. Large variability may be exhibited in data sources with low weekly values.

²Number of weeks that the % change is increasing or decreasing.

³Black lines represent current week's data; red lines represent baseline averages

⁴Medical Claims Data provided by athenahealth® not available for week 12, data as of week 9 is shown.

*The seasonal threshold is 25 cases of influenza-associated hospitalizations; historical data demonstrate that once the weekly count exceeds 25 cases, the number of weekly cases thereafter will likely not decrease until after the peak of influenza activity for the season

State, Regional, and National Data:

Ohio Surveillance Data:

- **ODH lab** has reported **1,023 positive** influenza tests from specimens sent from sentinel ILINet providers and hospital clinical labs. 2019-2020 influenza season results: **(616) A/H1N1pdm09; (17) A/H3N2; (390) Influenza B;** (through 03/21/2020).
- The **National Respiratory and Enteric Virus Surveillance System (NREVSS)** has reported **81,781** influenza specimens tested by RT-PCR at participating facilities. 2019-2020 influenza season positive results: **(682) A/pdmH1N1; (5) A/H3N2; (9,196) Flu A Not Subtyped; and (8,600) Flu B;** (through 03/21/2020)
- **5 influenza-associated pediatric mortalities** have been reported during the 2019-2020 season (through 03/21/2020).
- No **novel influenza A virus infections** have been reported during the 2019-2020 season (through 03/21/2020).
- Incidence of confirmed **influenza-associated hospitalizations** in 2019-2020 season = **10,540** (through 03/21/2020).

HHS Regional Surveillance Data*: During week 11 (**March 8th – March 14th, 2020**), the proportion of outpatient visits for ILI in Region 5 (Ohio is in Region 5) increased to 4.61%, which is **above** the regional baseline of 1.9%. Michigan, Ohio, West Virginia, Pennsylvania, Kentucky, and Indiana reported Widespread Activity.

National Surveillance Data*: During week 11 (**March 8th – March 14th, 2020**), the majority of the U.S. reported High influenza activity though some states are reporting Low or Minimal activity. The proportion of outpatient visits for ILI increased to 5.8%, which is **above** the national baseline of 2.4%. All 10 HHS regions reported ILI levels at or above their region-specific baseline level. While influenza B/Victoria viruses predominated earlier in the season, during recent weeks, influenza A(H1N1)pdm09 viruses have been reported more frequently than B/Victoria viruses nationally and in all surveillance regions. For the season, A(H1N1)pdm09 viruses are the predominant virus nationally.



A Weekly Influenza Surveillance Report Prepared by the Influenza Division

Weekly Influenza Activity Estimates Reported by State and Territorial Epidemiologists*

Week Ending Mar 14, 2020 - Week 11



*This map indicates geographic spread and does not measure the severity of influenza activity.

2019-2020 Influenza Vaccine Components:

A/B	Virus	Trivalent (High-dose only)	Quadrivalent
A	A/Brisbane/02/2018 (H1N1)pdm09-like	X	X
A	A/Kansas/14/2017 (H3N2)-like virus	X	X
B	B/Colorado/06/2017-like virus (Victoria lineage)	X	X
B	Phuket/3073/2013-like (B/Yamagata lineage)		X

Antigenic Characterization:

CDC **antigenically characterizes** a subset of influenza viruses by [hemagglutination inhibition \(HI\)](#) or neutralization based Focus Reduction assays (FRA). Antigenic drift is evaluated by comparing antigenic properties of cell-propagated reference viruses representing currently recommended vaccine components with those of cell-propagated circulating viruses. CDC antigenically characterized 446 influenza viruses collected in the United States from September 29, 2019, to March 14, 2020. These data are not used to make calculations about [vaccine effectiveness \(VE\)](#). CDC conducts [VE studies](#) each year to measure the benefits of flu vaccines in people.

Influenza A Viruses

- **A (H1N1)pdm09:** 177 A(H1N1)pdm09 viruses were antigenically characterized by HI with ferret antisera, and 143 (80.8%) were antigenically similar (reacting at titers that were within 4-fold of the homologous virus titer) to cell-propagated A/Brisbane/02/2018-like reference viruses representing the A(H1N1)pdm09 component for the 2019-20 Northern Hemisphere influenza vaccines. The decrease in the percent of A(H1N1)pdm09 viruses similar to A/Brisbane/02/2018 is due to some of the recent viruses selected for testing having a single amino acid change that is antigenically distinguishable in antigenic assays using ferret sera. Similar viruses were observed last season as well and these represented a small proportion of virus circulating. We have observed an increase in the proportion of H1N1pdm09 viruses with this change late in the US season.
- **A (H3N2):** 76 A(H3N2) viruses were antigenically characterized by FRA with ferret antisera, and 31 (40.8%) were antigenically similar to cell-propagated A/Kansas/14/2017-like reference viruses representing the A(H3N2) component for the 2019-20 Northern Hemisphere influenza vaccines.

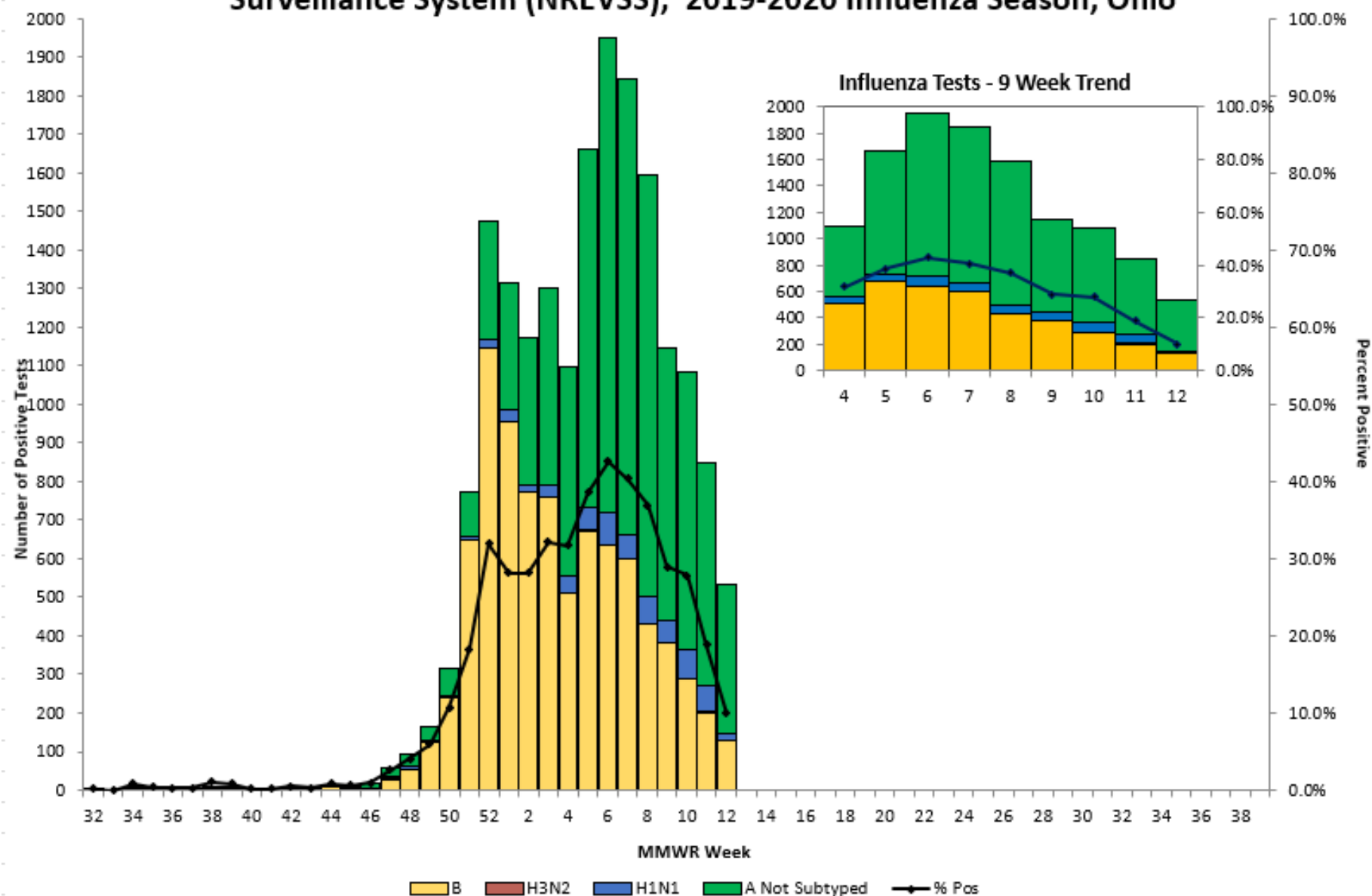
Influenza B Viruses

- **B/Victoria:** 165 B/Victoria lineage viruses, including viruses from both co-circulating sub-clades, were antigenically characterized by HI with ferret antisera, and 106 (64.2%) were antigenically similar to cell-propagated B/Colorado/06/2017-like reference viruses representing the B/Victoria component for the 2019-20 Northern Hemisphere influenza vaccines.
- **B/Yamagata:** 28 B/Yamagata lineage viruses were antigenically characterized by HI with ferret antisera, and all 28 (100%) were antigenically similar to cell-propagated B/Phuket/3073/2013-like reference viruses representing the B/Yamagata component for the 2019-20 Northern Hemisphere influenza vaccines.

National activity levels and more information can be found at the following CDC pages:

- <http://www.cdc.gov/flu/weekly/usmap.htm>
- <http://www.cdc.gov/flu/>

Positive Influenza Tests (PCR), National Respiratory and Enteric Virus Surveillance System (NREVSS), 2019-2020 Influenza Season, Ohio



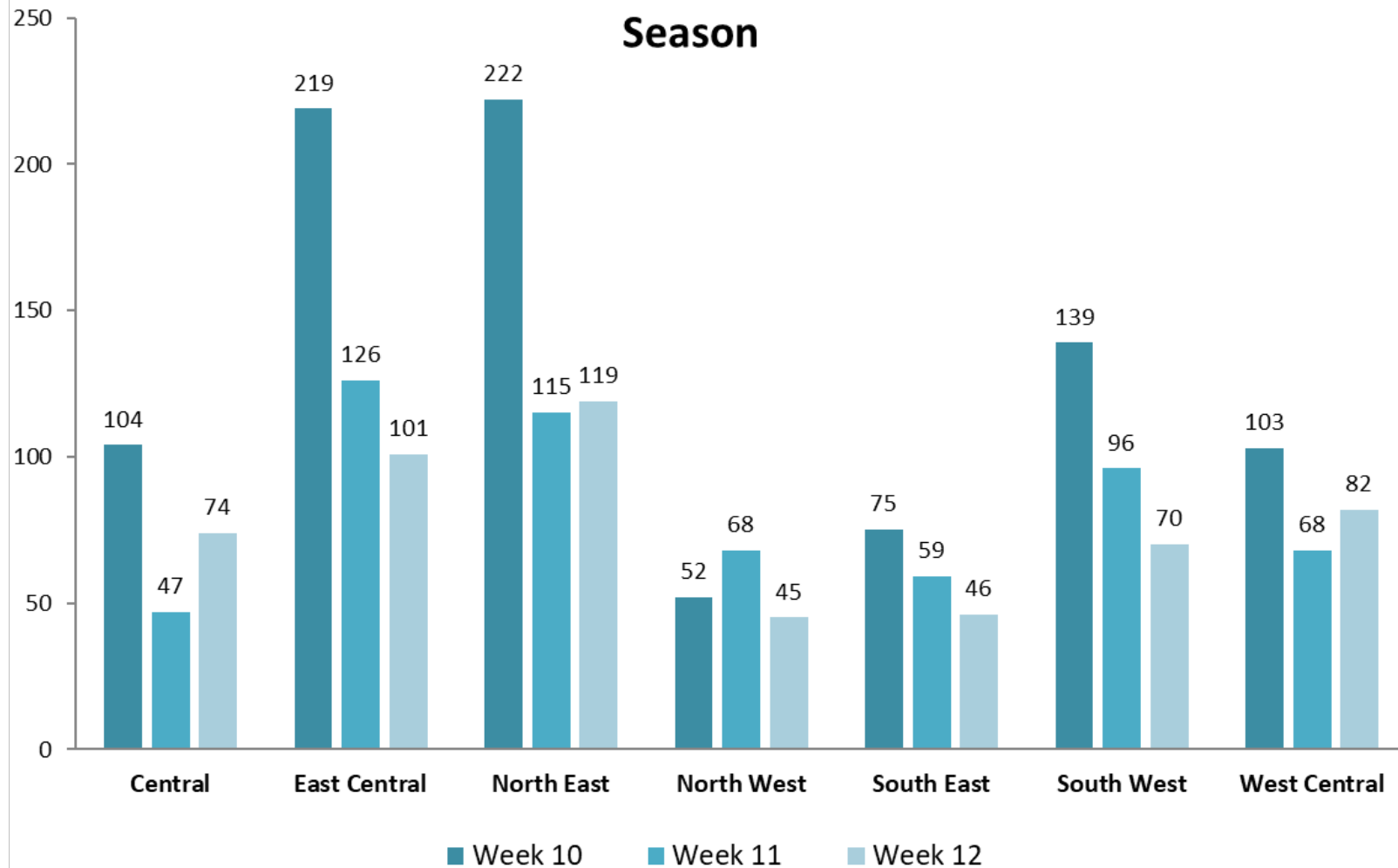
Influenza-Associated Hospitalizations, Ohio 2019-2020 Season*								
County	Influenza-Associated Hospitalizations	Percent of All Influenza-Associated Hospitalizations	Rate per 100,000 Population†		County	Influenza-Associated Hospitalizations	Percent of All Influenza-Associated Hospitalizations	Rate per 100,000 Population†
ADAMS	15	0.1%	52.54		LOGAN	16	0.2%	34.89
ALLEN	125	1.2%	117.56		LORAIN	216	2.0%	71.68
ASHLAND	36	0.3%	67.75		LUCAS	364	3.5%	82.39
ASHTABULA	132	1.3%	130.05		MADISON	28	0.3%	64.46
ATHENS	36	0.3%	55.59		MAHONING	239	2.3%	100.07
AUGLAIZE	31	0.3%	67.47		MARION	62	0.6%	93.23
BELMONT	38	0.4%	53.98		MEDINA	105	1.0%	60.93
BROWN	12	0.1%	26.76		MEIGS	16	0.2%	67.31
BUTLER	300	2.8%	81.49		MERCER	43	0.4%	105.36
CARROLL	13	0.1%	45.08		MIAMI	88	0.8%	85.85
CHAMPAIGN	40	0.4%	99.76		MONROE	6	0.1%	40.98
CLARK	197	1.9%	142.41		MONTGOMERY	790	7.5%	147.62
CLERMONT	121	1.1%	61.31		MORGAN	12	0.1%	79.71
CLINTON	24	0.2%	57.09		MORROW	15	0.1%	43.07
COLUMBIANA	95	0.9%	88.09		MUSKINGUM	94	0.9%	109.21
COSHOCTON	36	0.3%	97.56		NOBLE	3	0.0%	20.48
CRAWFORD	32	0.3%	73.09		OTTAWA	26	0.2%	62.76
CUYAHOGA	1985	18.8%	155.06		PAULDING	8	0.1%	40.79
DARKE	39	0.4%	73.64		PERRY	36	0.3%	99.84
DEFIANCE	18	0.2%	46.11		PICKAWAY	46	0.4%	82.59
DELAWARE	49	0.5%	28.13		PIKE	27	0.3%	94.05
ERIE	69	0.7%	89.52		PORTAGE	126	1.2%	78.06
FAIRFIELD	91	0.9%	62.26		PREBLE	36	0.3%	85.17
FAYETTE	16	0.2%	55.12		PUTNAM	13	0.1%	37.68
FRANKLIN	814	7.7%	69.97		RICHLAND	97	0.9%	77.93
FULTON	36	0.3%	84.31		ROSS	94	0.9%	120.41
GALLIA	22	0.2%	71.12		SANDUSKY	49	0.5%	80.40
GEAUGA	62	0.6%	66.39		SCIOTO	105	1.0%	132.08
GREENE	149	1.4%	92.22		SENECA	22	0.2%	38.77
GUERNSEY	27	0.3%	67.35		SHELBY	54	0.5%	109.26
HAMILTON	796	7.6%	99.21		STARK	352	3.3%	93.72
HANCOCK	29	0.3%	38.78		SUMMIT	581	5.5%	107.24
HARDIN	5	0.0%	15.60	TRUMBULL	214	2.0%	101.75	
HARRISON	13	0.1%	81.95	TUSCARAWAS	53	0.5%	57.25	
HENRY	17	0.2%	60.25	UNION	19	0.2%	36.33	
HIGHLAND	37	0.4%	84.88	VAN WERT	3	0.0%	10.44	
HOCKING	10	0.1%	34.04	VINTON	13	0.1%	96.76	
HOLMES	23	0.2%	54.29	WARREN	157	1.5%	73.82	
HURON	57	0.5%	95.60	WASHINGTON	58	0.6%	93.88	
JACKSON	36	0.3%	108.35	WAYNE	61	0.6%	53.27	
JEFFERSON	11	0.1%	15.78	WILLIAMS	12	0.1%	31.88	
KNOX	28	0.3%	45.96	WOOD	85	0.8%	67.74	
LAKE	194	1.8%	84.33	WYANDOT	13	0.1%	57.48	
LAWRENCE	73	0.7%	116.89	UNKNOWN	0	0.0%	*	
LICKING	94	0.9%	56.46	TOTAL	10540	100%	91.36	

*2019-2020 Season 09/29/2019 thru 09/26/2020; data as of 03/15/2020

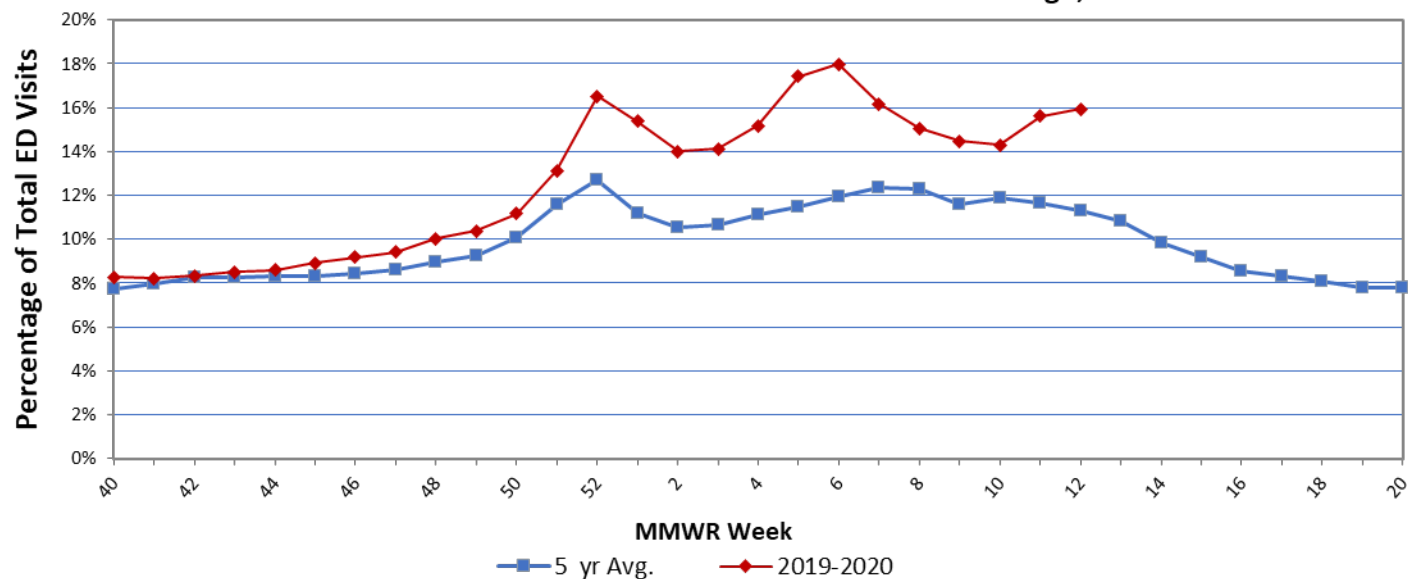
† Disease rates were calculated by number of cases per 100,000 residents using 2010 census data.

Source: Ohio Disease Reporting System

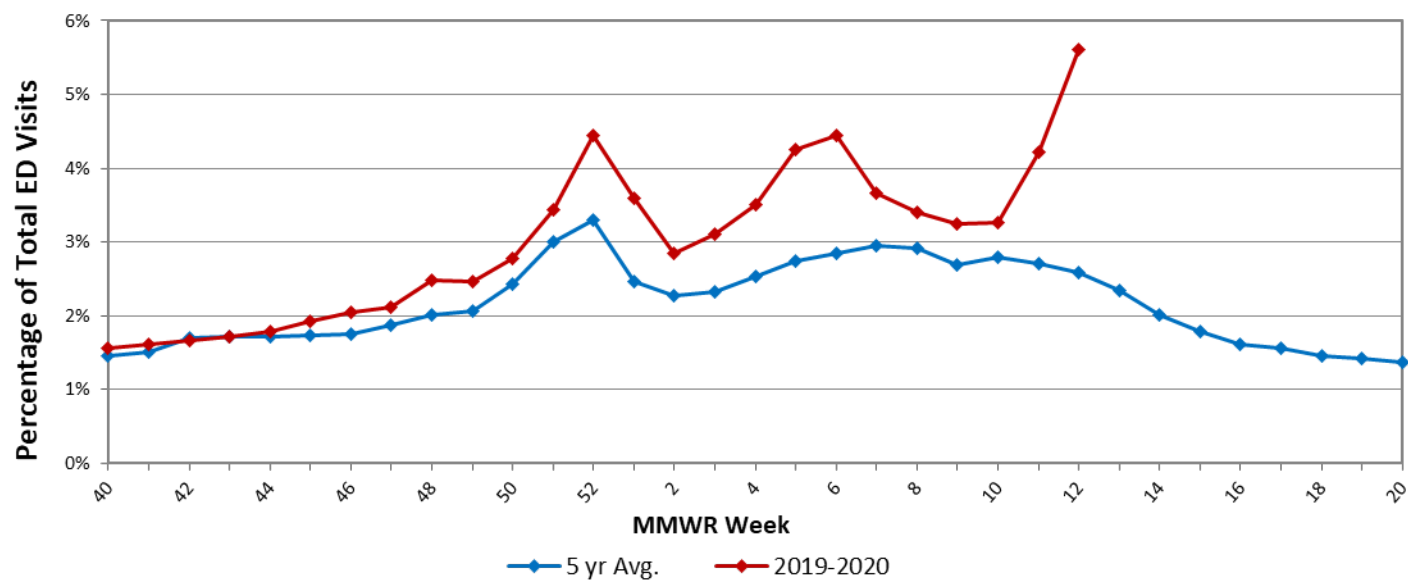
Influenza-associated Hospitalizations by Public Health Region and MMWR Week, Ohio, 2019-2020 Influenza Season

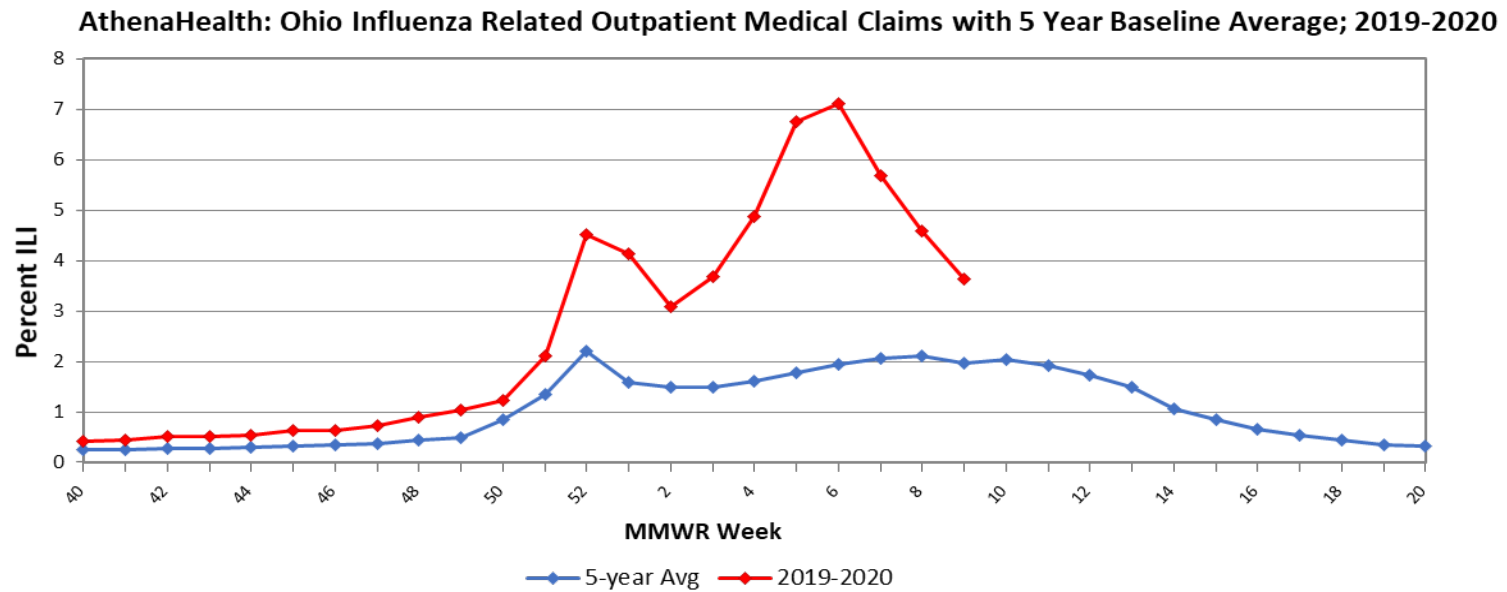
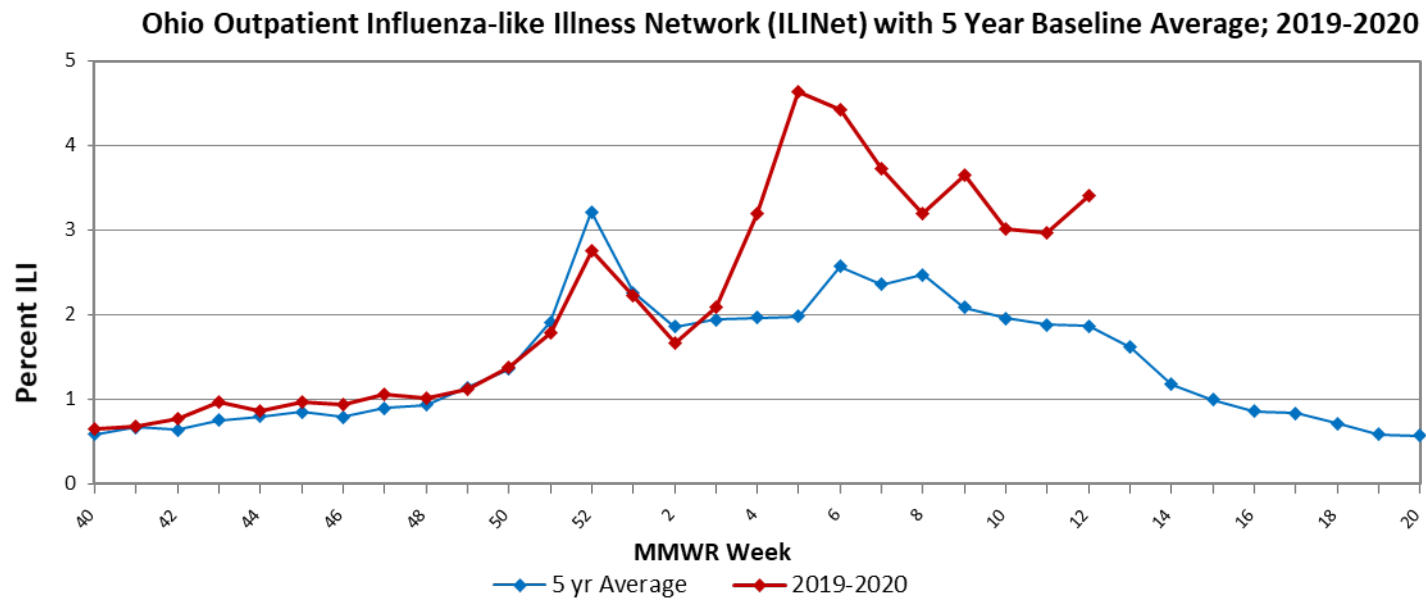


Ohio Constitutional ED Visits with 5 Year Baseline Average; 2019-2020

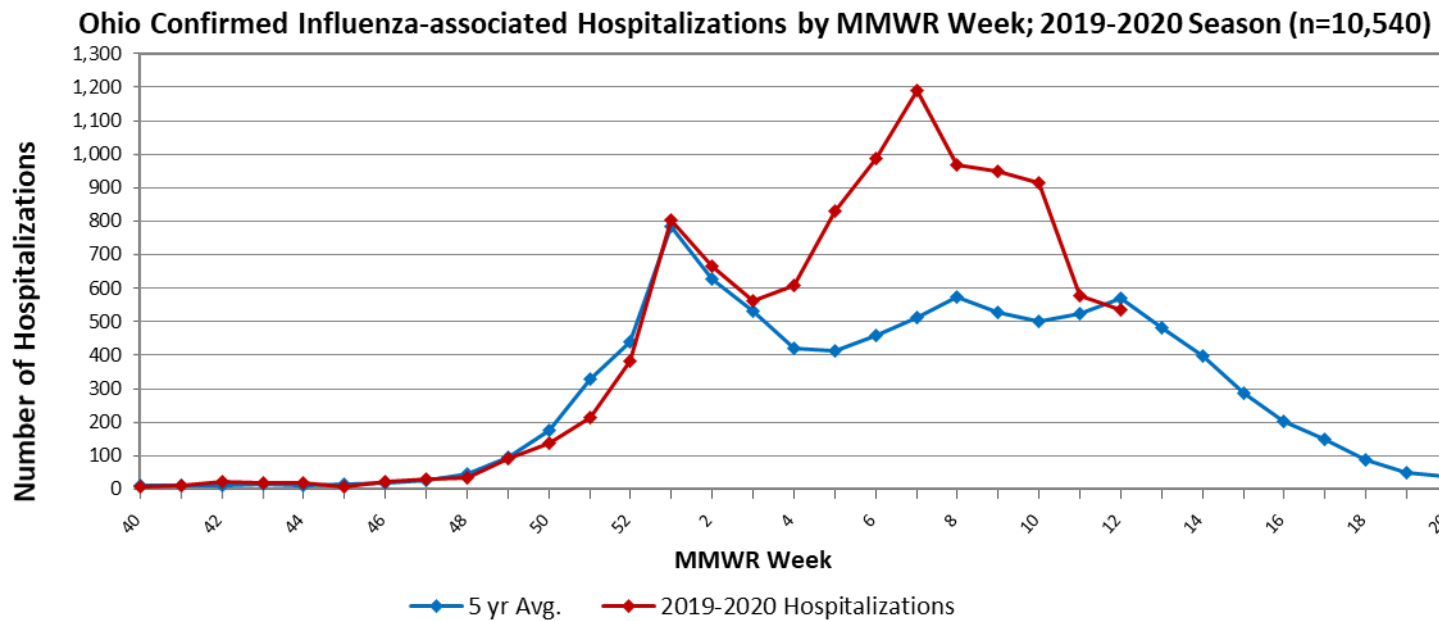
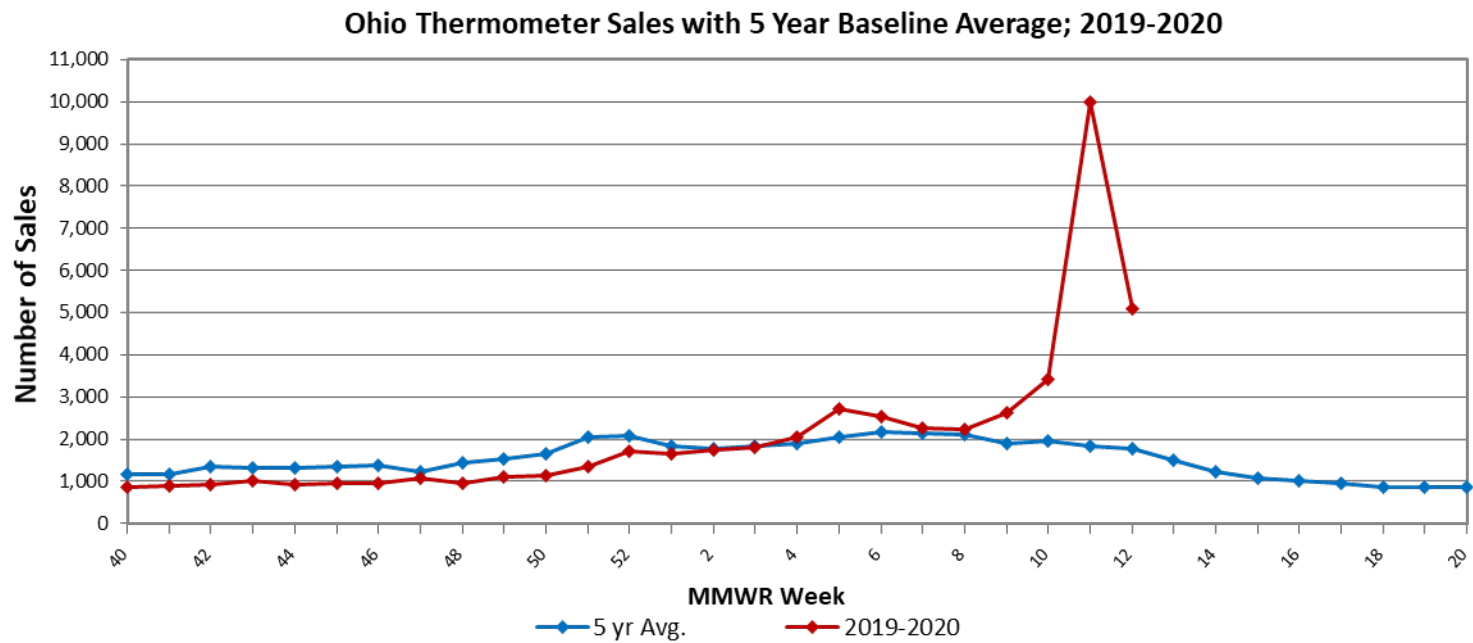


Ohio Fever & ILI Specified ED Visits with 5 Year Baseline Average; 2019-2020





Medical Claims Data provided by athenahealth® not available for week 12, week 9 data are shown.



Sources of Influenza Surveillance Data

- **National Retail Data Monitor (NRDM)-OTC Drug Purchases:** The NRDM collects over-the-counter (OTC) drug sales information from approximately 1,420 Ohio chain drug stores and grocery stores. For influenza surveillance, thermometer and adult cold relief sales are monitored on a weekly basis.
- **Emergency Department Visits (EpiCenter):** EpiCenter collects emergency department chief complaint data from 180 hospitals and urgent care facilities across Ohio in real time and classifies them into symptom and syndrome categories. Chief complaints from the constitutional syndrome category and the fever + ILI symptoms classifier are analyzed for influenza surveillance.
- **Sentinel Providers (ILINet):** Sentinel providers, through the US Influenza-like Illness Surveillance Network (ILINet), collect outpatient influenza-like illness (ILI) data. ILI is defined as a fever (≥ 100 F), **and** cough and/or sore throat without another known cause. Providers report the total number of patients seen and the number of patients with ILI by age group on a weekly basis. Sentinel providers also submit specimens for influenza testing to the ODH laboratory throughout the influenza season. There are 70 sentinel providers enrolled in Ohio for the 2019-2020 season.
- **ODH Laboratory Surveillance:** The Ohio Department of Health Laboratory reports the number of specimens that test positive for influenza each week. Generally, specimens are submitted by sentinel provider participants. A subset of the positive specimens is sent to CDC for further testing during the season.
- **Influenza-associated Hospitalizations (ODRS):** Influenza-associated hospitalizations are reported to ODH from local health departments and hospitals by direct entry into the Ohio Disease Reporting System (ODRS). Hospitalizations can be used as an indicator of the severity of illness during a particular influenza season. This condition became reportable in 2009.
- **Influenza-associated Pediatric Mortality (ODRS):** Influenza-associated pediatric mortalities are reported into ODRS by local health department and hospital staff. Pediatric deaths can be an indicator of the severity of illness during the influenza season. This condition became reportable in 2005.
- **National Respiratory and Enteric Virus Surveillance System (NREVSS):** The National Respiratory and Enteric Virus Surveillance System (NREVSS) is a laboratory-based system that monitors temporal and geographic patterns associated with the detection of respiratory syncytial virus (RSV), human parainfluenza viruses (HPIV), respiratory and enteric adenoviruses and rotavirus. There are 19 facilities in Ohio that submit data to this system.
- **athenahealth®:** athenahealth is a technology and services company for medical billing and electronic health records. Diagnosis and procedure data from primary care visits are automatically queried to produce influenza related statistics.

Ohio Public Health Regions: These counties comprise the Ohio Public Health Regions described in the figures shown on pages 1 and 5.

Central		East Central		Noth East	North West		South East		South West	West Central
CRAWFORD	LOGAN	ASHLAND	RICHLAND	ASHTABULA	ALLEN	MERCER	ATHENS	MONROE	ADAMS	CHAMPAIGN
DELAWARE	MADISON	CARROLL	STARK	CUYAHOGA	AUGLAIZE	OTTAWA	BELMONT	MORGAN	BROWN	CLARK
FAIRFIELD	MARION	COLUMBIANA	SUMMIT	GEAUGA	DEFIANCE	PAULDING	COSHOCTON	MUSKINGUM	BUTLER	DARKE
FAYETTE	MORROW	HOLMES	TRUMBULL	LAKE	ERIE	PUTNAM	GALLIA	NOBLE	CLERMONT	GREENE
FRANKLIN	PICKAWAY	MAHONING	TUSCARAWAS	LORAIN	FULTON	SANDUSKY	GUERNSEY	PERRY	CLINTON	MIAMI
HARDIN	UNION	MEDINA	WAYNE		HANCOCK	SENECA	HARRISON	PIKE	HAMILTON	MONTGOMERY
KNOX	WYANDOT	PORTAGE			HENRY	VAN WERT	HOCKING	ROSS	HIGHLAND	PREBLE
LICKING					HURON	WILLIAMS	JACKSON	SCIOTO	WARREN	SHELBY
					LUCAS	WOOD	JEFFERSON	VINTON		
							LAWRENCE	WASHINGTON		
							MEIGS			

If you have any further questions or comments about surveillance for seasonal influenza for the State of Ohio, please contact the Infectious Disease Informatics and Vaccine Preventable Disease Epidemiology Unit at SMED@odh.ohio.gov or call (614) 995-5599.