

Induced Abortions in Ohio, 2012

Prepared by:
Statistical Analyst Unit
Office of Vital Statistics

John Paulson
Health Services Policy Supervisor

Donna L. Smith
Researcher



Ohio

Department of Health

John R. Kasich, Governor

Theodore E. Wymyslo, M.D. Director, Ohio Department of Health

Induced Abortion Program Contact Persons

Statistical Analysis Unit

Data Analysis

John Paulson

614-644-8507

Donna L. Smith

614-466-7545

Quality Assurance

Fetal Development

Hahn Lee

Resources Directory on Request

614-644-7726

Office of General Counsel

Legislation

Rachel Belenker

614-466-4882

Table of Contents

Induced Abortion Summary	1
Figure 1a. Resident Induced Abortions, Ohio, 1976-2012	3
Figure 1b. Ohio Induced Terminations by Year and Month, 2009-2012	4
Figure 2 Selected Characteristics of Resident Induced Abortions in Ohio, 2012	5
Figure 3 Induced Abortions Reported In Ohio by County of Occurrence, 2012	6
Figure 4 Abortion Ratio and Abortion Rate, by Year, Ohio Residents, 1990-2012	7
Figure 5 Induced Abortion Rates per 1,000 Women by Age, Ohio Residents, 2001-2012	8
Figure 6 Induced Abortion Ratio, by Age Group, Ohio Residents, 2002-2012	9
Figure 7 Total Induced Abortions by Weeks of Gestation, by Year, 1990-2012	10
TABLE 1 INDUCED ABORTION SUMMARY TABLE, OHIO, 2012	11
TABLE 2 SELECTED CHARACTERISTICS OF INDUCED ABORTIONS REPORTED IN OHIO, 2000-2012	12-13
TABLE 3 RESIDENT INDUCED ABORTIONS REPORTED IN OHIO, BY COUNTY OF RESIDENCE, 2000-2012	14-15
TABLE 4 RESIDENT INDUCED ABORTIONS REPORTED IN OHIO, BY COUNTY OF RESIDENCE AND AGE, 2012	16-17
TABLE 5A RESIDENT INDUCED ABORTIONS REPORTED IN OHIO, BY SELECTED COUNTIES, RACE, AND BROAD AGE GROUPS, 2012	18-19
TABLE 5B RESIDENT INDUCED ABORTIONS REPORTED IN OHIO, BY SELECTED COUNTIES, RACE, AND AGE, 2012	20-21
TABLE 6 INDUCED ABORTIONS REPORTED IN OHIO, BY COUNTY OF OCCURRENCE, 2000-2012	22
TABLE 7 INDUCED ABORTIONS REPORTED IN OHIO, BY METHOD OF TERMINATION AND COUNTY OF OCCURRENCE, 2012	23
TABLE 8A TOTAL INDUCED ABORTIONS REPORTED IN OHIO, BY GESTATIONAL AGE, 2012	24
TABLE 8B METHOD USED TO DETERMINE GESTATIONAL AGE OF FETUS, OHIO, 2012	24
TABLE 9 RESIDENT INDUCED ABORTIONS REPORTED IN OHIO, BY AGE OF WOMEN OBTAINING ABORTION AND BY NUMBER OF PRIOR INDUCED ABORTIONS, 2012	25
TABLE 10A TOTAL INDUCED ABORTIONS IN OHIO WITH POST- ABORTION COMPLICATIONS, BY TYPE OF COMPLICATION, 2012 (DATA SOURCE IS 'CONFIDENTIAL ABORTION REPORTING FORM')	26

TABLE 10B	TOTAL INDUCED ABORTIONS IN OHIO WITH POST-ABORTION COMPLICATIONS, BY TYPE OF COMPLICATION, 2012 (DATA SOURCE IS 'POST-ABORTION CARE REPORT FOR COMPLICATIONS')	27
TABLE 11	TOTAL INDUCED ABORTIONS IN OHIO WITH POST-ABORTION COMPLICATIONS, BY TYPE OF COMPLICATION AND GESTATION PERIOD, 2012 (DATA SOURCE IS 'POST-ABORTION CARE REPORT FOR COMPLICATIONS')	28
TABLE 12	RESIDENT INDUCED ABORTIONS BY ZIP CODE OF PATIENT, OHIO, 2012	29-31
TABLE 13	CONTRACEPTIVE HISTORY AT THE TIME OF CONCEPTION AND CONTRACEPTION RECOMMENDATIONS PROVIDED AT DISCHARGE OHIO, 2012	32
TABLE 14	PREGNANCY HISTORY OF WOMAN WHO OBTAINED INDUCED TERMINATION IN OHIO, 2012	33
TABLE 15	SELECTED MEDICAL INFORMATION FROM THE CONFIDENTIAL ABORTION REPORT, OHIO, 2012	34
TABLE 16	TYPE OF COUNSELING PROVIDED TO WOMEN OBTAINING TERMINATIONS, OHIO, 2012	35
TABLE 17	TIMING OF MEDICAL EXAM FOR TERMINATIONS PERFORMED, INDUCED, OR ATTEMPTED AFTER 19 COMPLETED WEEKS GESTATION, OHIO, 2012	35
TABLE 18	VIABILITY DETERMINATION AND TYPE OF TESTING USED TO DETERMINE VIABILITY FOR TERMINATIONS PERFORMED, INDUCED, OR ATTEMPTED AFTER 19 COMPLETED WEEKS GESTATION, OHIO, 2012	36
APPENDIX I	CONFIDENTIAL ABORTION REPORT FORM	37
APPENDIX II	MEDICAL INFORMATION FOR ABORTIONS PERFORMED, INDUCED or ATTEMPTED AFTER 19 COMPLETED WEEKS OF GESTATION	38
APPENDIX III	POST-ABORTION CARE REPORT FOR COMPLICATIONS FORM	39

Induced Abortion Summary

Background

The 2012 Annual Abortion Report presents information derived from both the “Confidential Abortion Reports” and “Post-Abortion Care Reports for Complications” for 2012 in Ohio (reporting forms are included as Appendices I, II, and III). The Confidential Abortion Report form was revised effective January 1, 2012. This annual report is the first to report information derived from the revised form. The revised form allows for more detailed reporting for race (from single race to multi-race), education, termination method, as well as additional information for terminations performed after 19 weeks of completed gestation (see tables 17 and 18).

Characteristics of Induced Abortions Reported in Ohio, 2012

Induced abortion statistics are available for Ohio dating back to 1976. Many trend comparisons in the 2012 Annual Abortion Report date back to 2000. A total of 25,473 induced pregnancy terminations were reported in Ohio for 2012, including 24,080 obtained by Ohio resident women (94.5%). While this represents an increase of 709 terminations overall compared to 2011, this may be due to the unusually low number of terminations reported for the month of January 2011.

Since 2000 the data show a steady decline in terminations each year (figure 1-a). When examined over the time period 2000 to 2012, the annual decline averages approximately 900 less terminations per year. This decline remains consistent even when the 2011 anomaly is measured against years 2009 to 2012 (figure 1-b). Overall, the number of terminations in 2012 represents the second lowest termination rate since 1976.

Approximately one in seven women who obtained abortions were under 20 years of age, with one in three women between the ages of 20-24 years of age (figure 2). While the age distribution of women obtaining abortions has remained relatively unchanged since 2000, the age-specific abortion rates for women under age 25 have steadily decreased (Figure 5). Approximately 83% of women who obtained an abortion were never married, divorced, or widowed. Twelve percent of procedures were obtained by married or separated women. The marital status distribution has remained constant since 1994. Fifty-three percent of resident women who obtained abortions and for whom race was reported were White, 42% were African American, 3% were Asian/Pacific Islander, and 2% reported more than one race. Four percent of abortions were obtained by women of Hispanic origin.

The 2012 Ohio abortion rate was 10.8 per 1,000 resident women ages 15-44 years (figure 4). The most recent comparable rate for the US was higher at 15.1 per 1,000 women (year 2009). The 2012 Ohio abortion ratio was 174 abortions per 1,000 live births, down from 181 in 2011. Ohio’s abortion ratio is also lower than the 2009 US abortion ratio of 227 abortions per 1,000 live births.

Over half of all induced abortions involved pregnancies of less than 9 weeks (57%), with approximately 28% involving pregnancies of 9-12 weeks (figure 2). The proportion involving abortions of less than 9 weeks increased from 42% in 1995, while the proportion between 9 and 12 weeks declined from 40% to 28% (figure 7). There were 367 abortions involving pregnancies of 20 or more weeks. That represents a large decrease from the 525 reported in 2011 and the 915 reported in 1997. The revised abortion reporting form requests method used

to determine gestational age: ultrasound was used in 97% of cases. The vast majority of reported abortions were obtained in six major metropolitan areas of Ohio.

Curettage was the most used method of termination (81% in 2012). That method has decreased since 2001, when 87% of terminations were by curettage. The revised form now asks for type of medication for non-surgical terminations. Mifepristone was reported for 806 abortions, followed by 63 terminations using methotrexate. Four hundred ninety-nine (499) terminations reported use of other non-surgical methods and the majority of these reported misoprostol as the medication

Figure 1a. Resident Induced Abortions, Ohio, 1976 – 2012

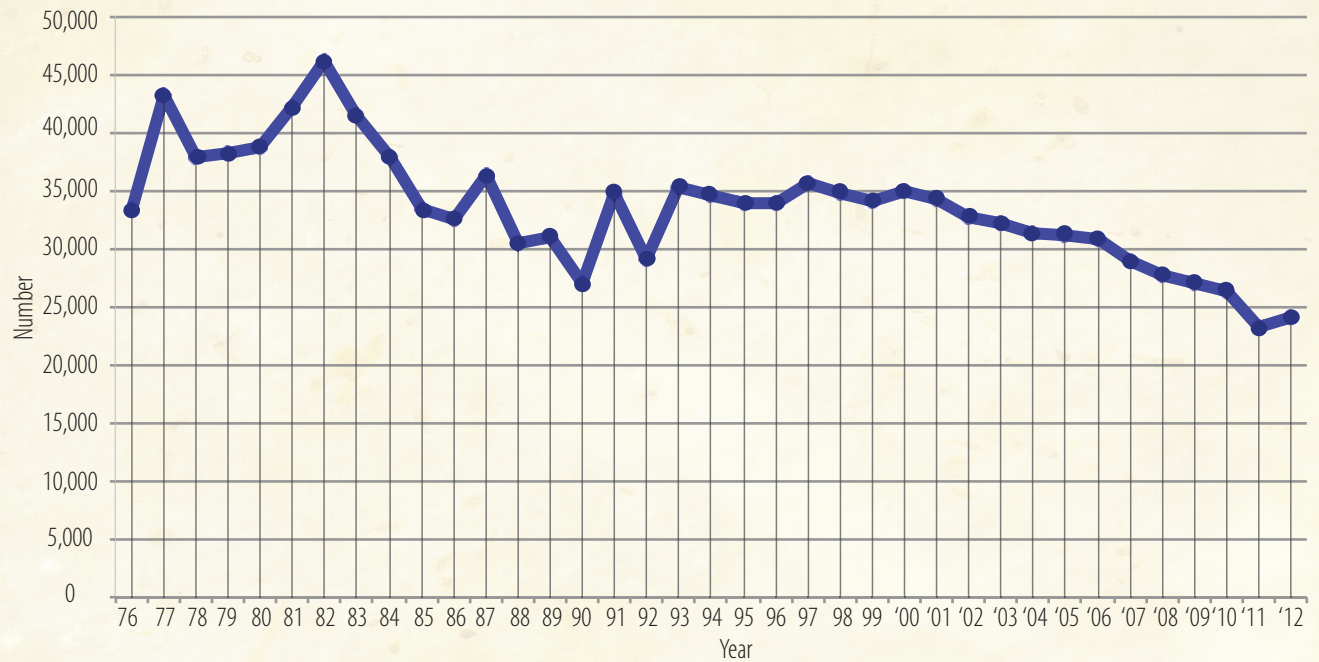
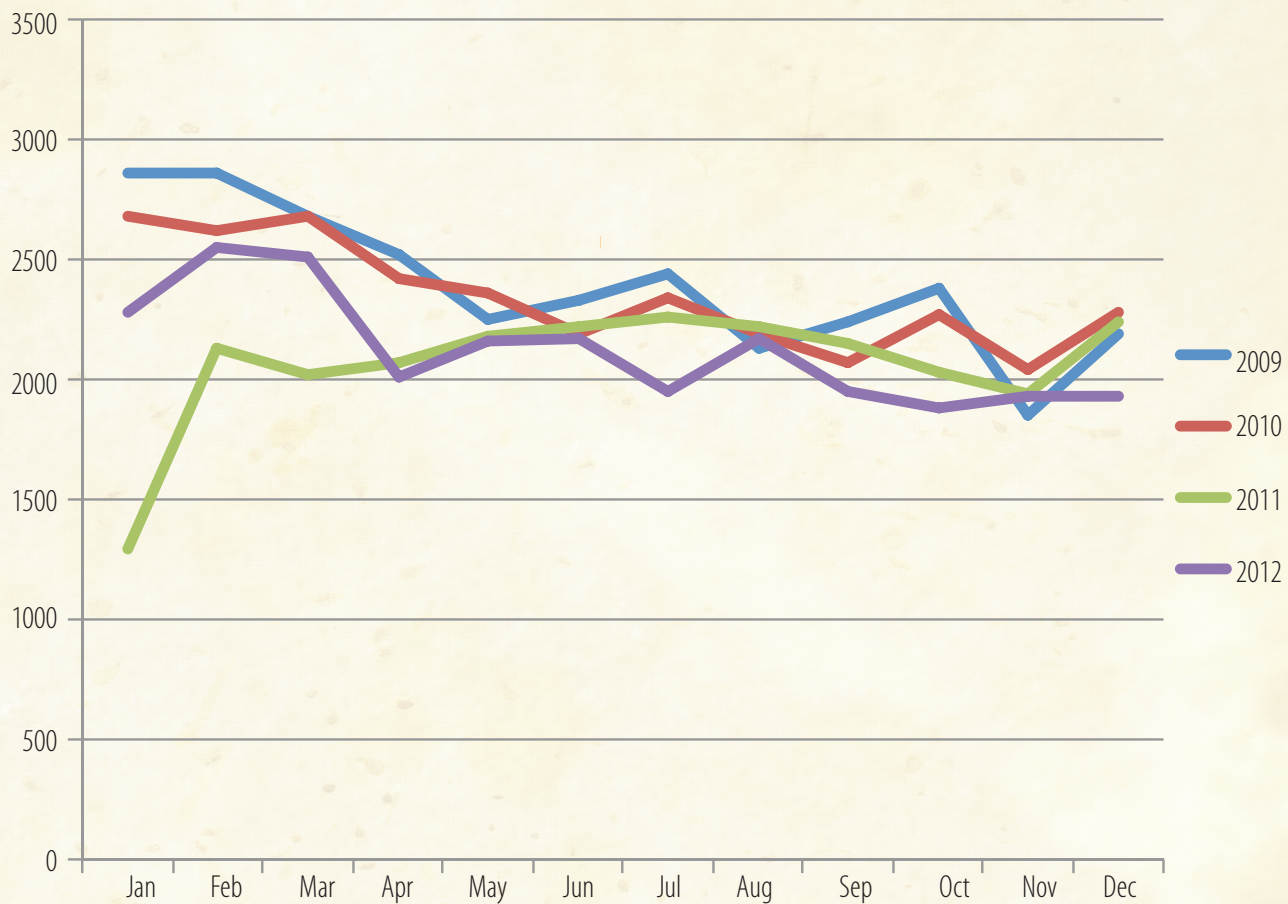


Figure 1b. Ohio Induced Terminations by Year and Month, 2009-2012



Source: Ohio Department of Health Confidential Abortion Reports

Figure 2. Selected Characteristics of Resident Induced Abortions in Ohio, 2012

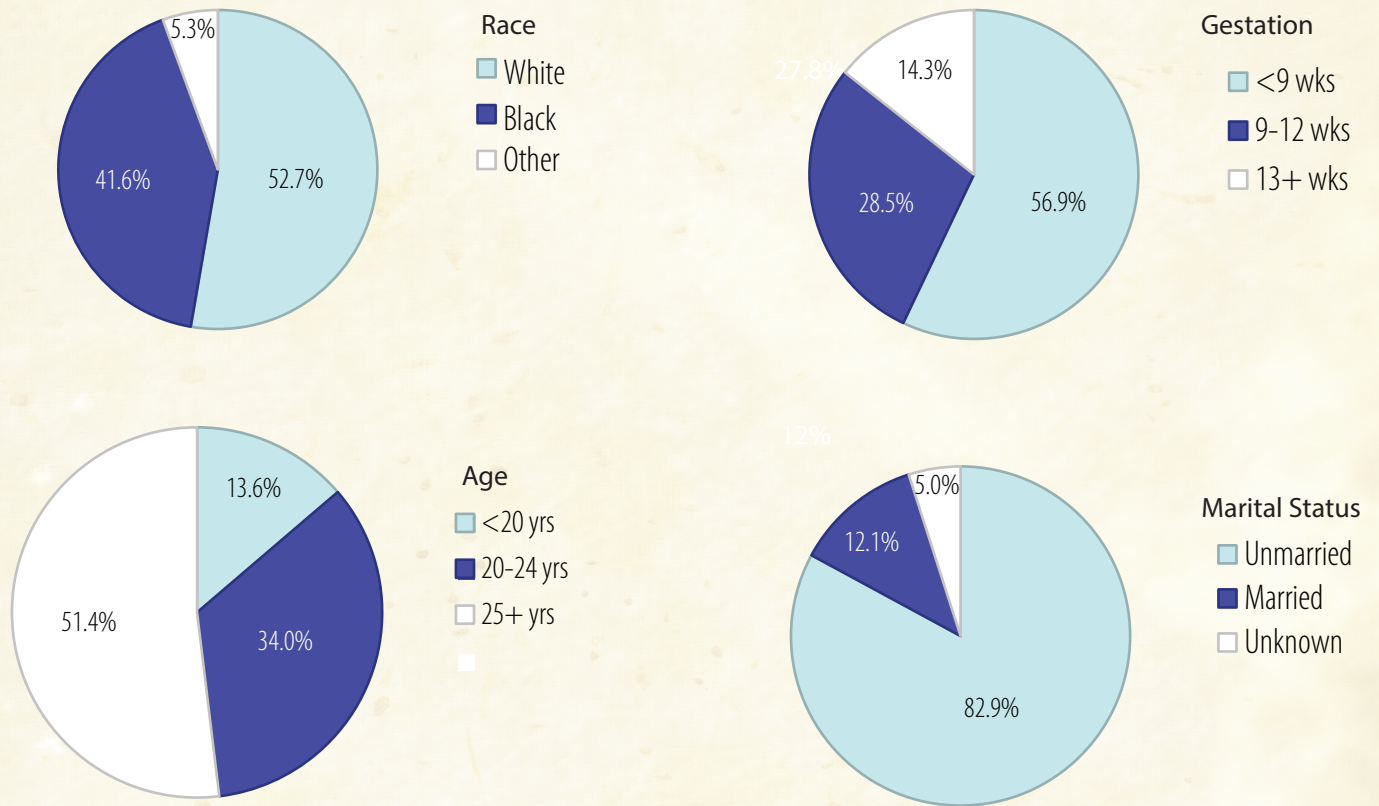


Figure 3. Induced Abortions Reported in Ohio,
by County of Occurrence, 2012

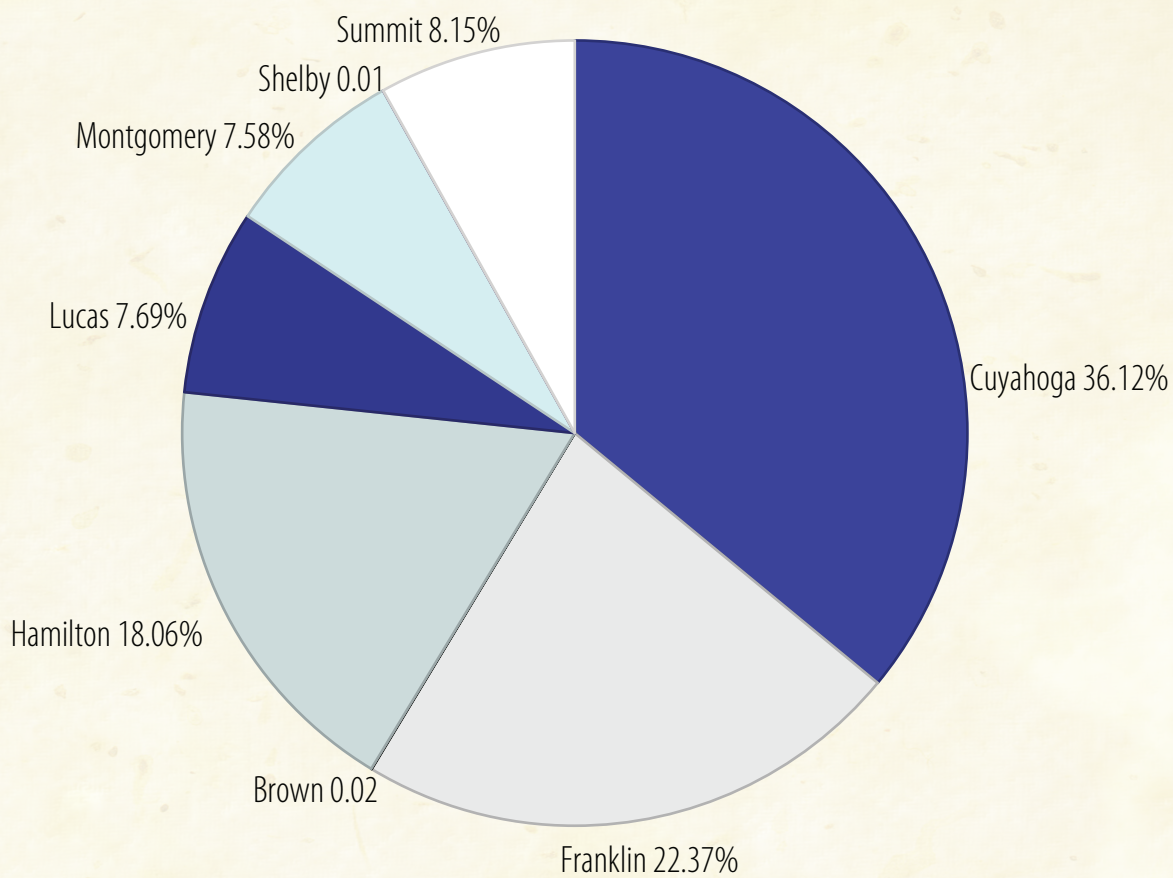
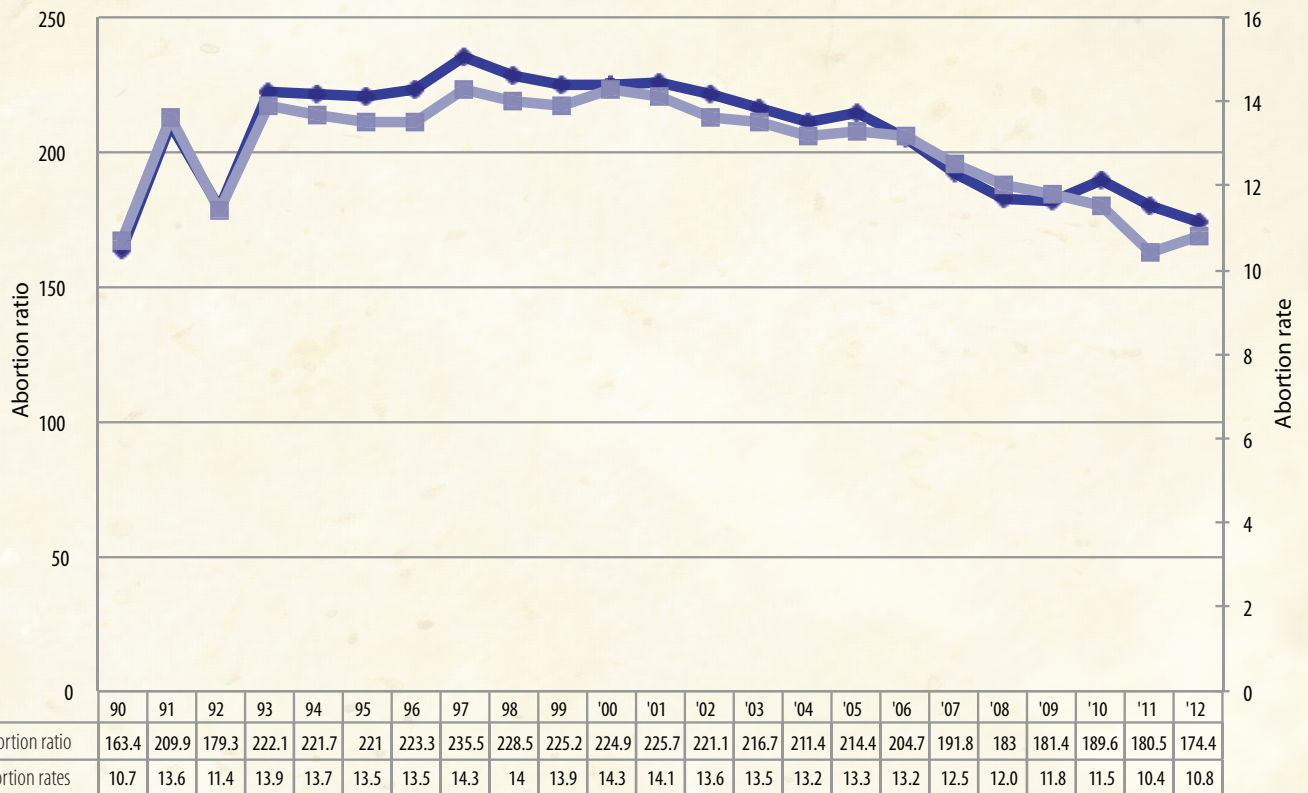


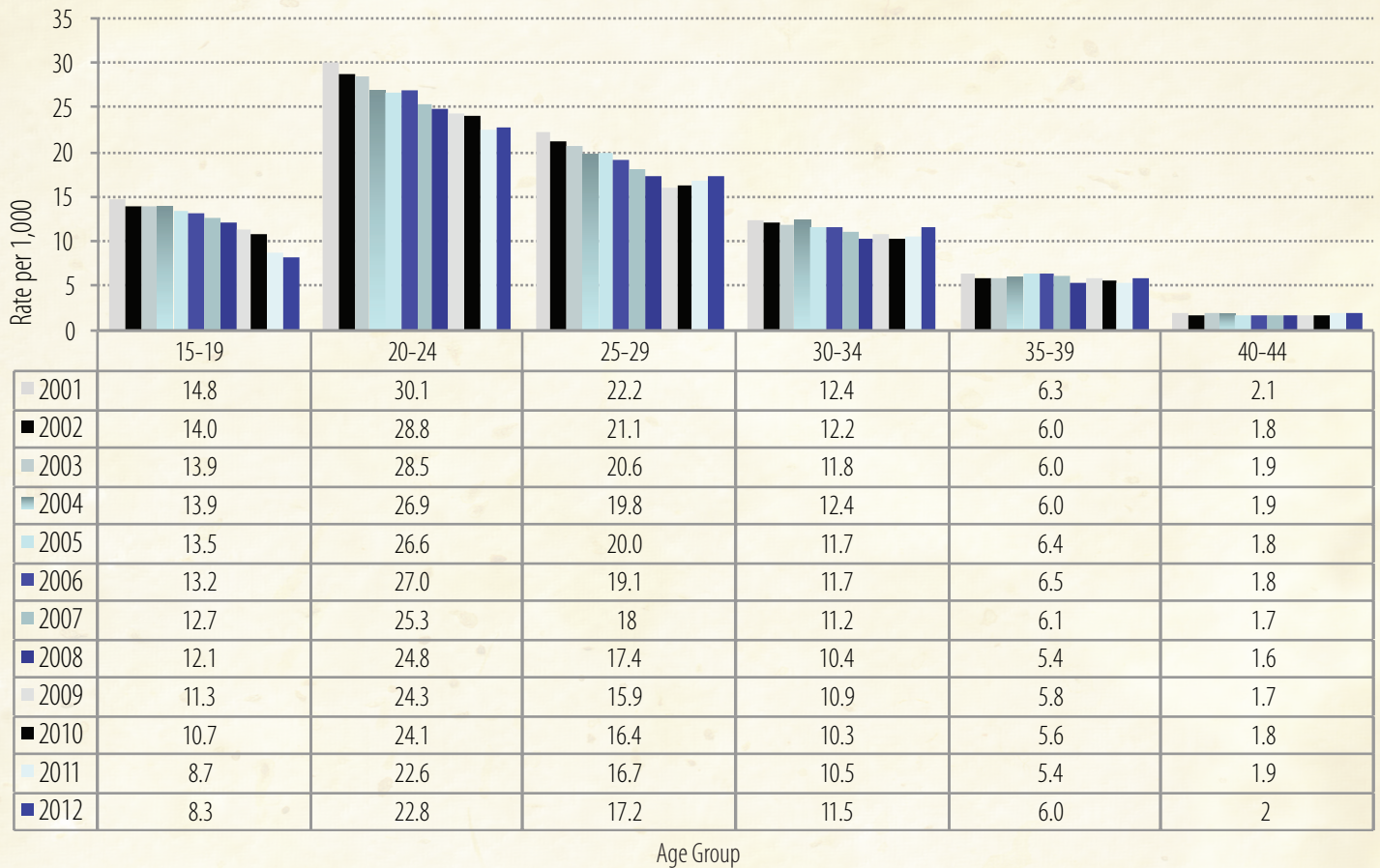
Figure 4. Abortion Ratio and Abortion Rate, by Year, Ohio Residents, 1990 - 2012



Abortion ratio is number of abortions per 1,000 live births.

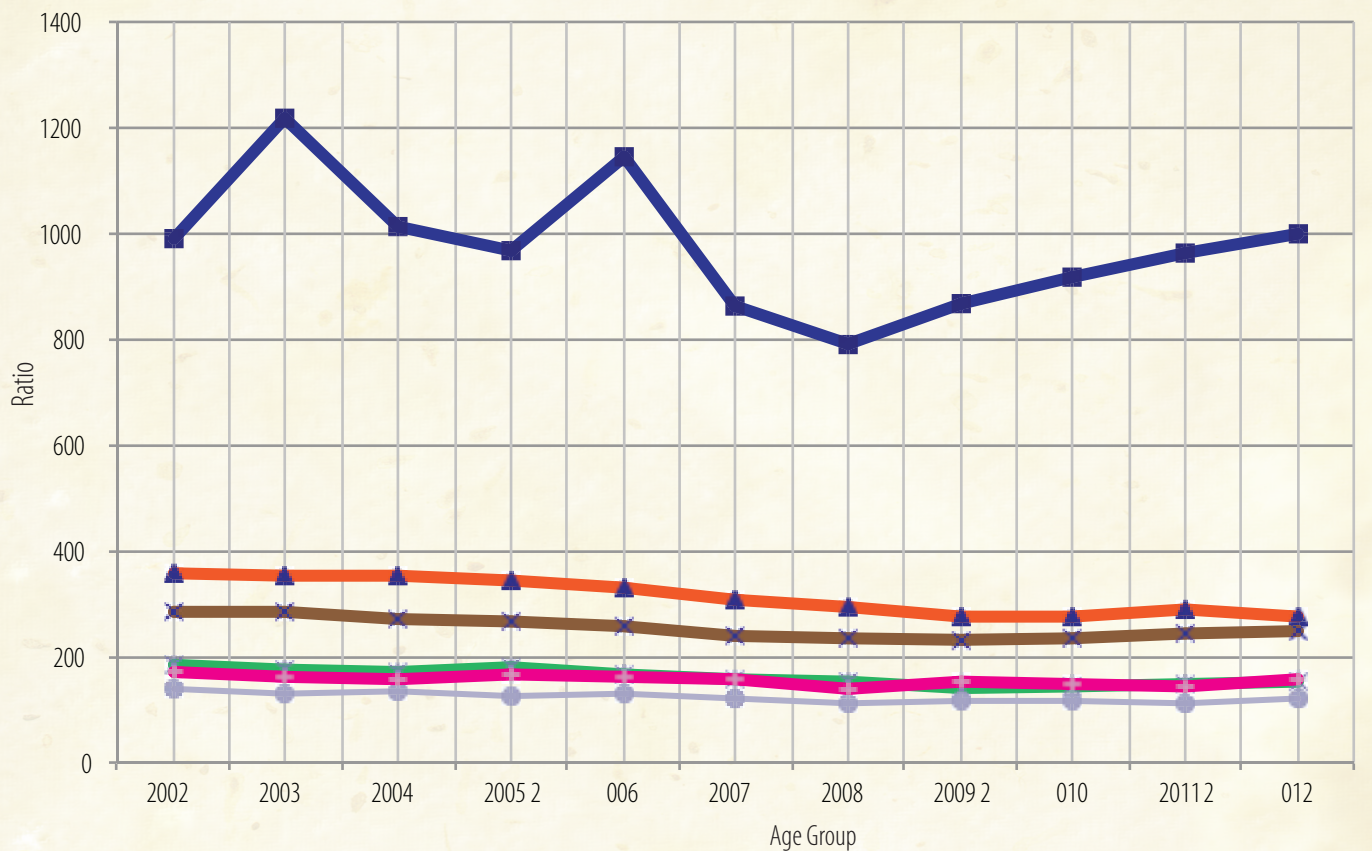
Abortion rate is number of abortions per 1,000 women ages 15-44.

Figure 5. Induced Abortion Rates per 1,000 Women
By Age, Ohio Residents, 2001 - 2012



Abortion rate is number of abortions per 1,000 female population in specified age group.

Figure 6. Induced Abortion Ratio, by Age Group, Ohio Residents, 2002 - 2012



Abortion rate is number of abortions per 1,000 live births in specified age group. For example, in 2012 there were 130 terminations among those under 15 and 130 births in the same age group, yielding a ratio of 1000.0 abortions per 1000 births.

- <15
- ▲ 15-19
- ★ 20-24
- ✱ 25-29
- 30-34
- ✚ 35-39

Figure 7. Total Induced Abortions by Weeks of Gestation, by year, 1990-2012

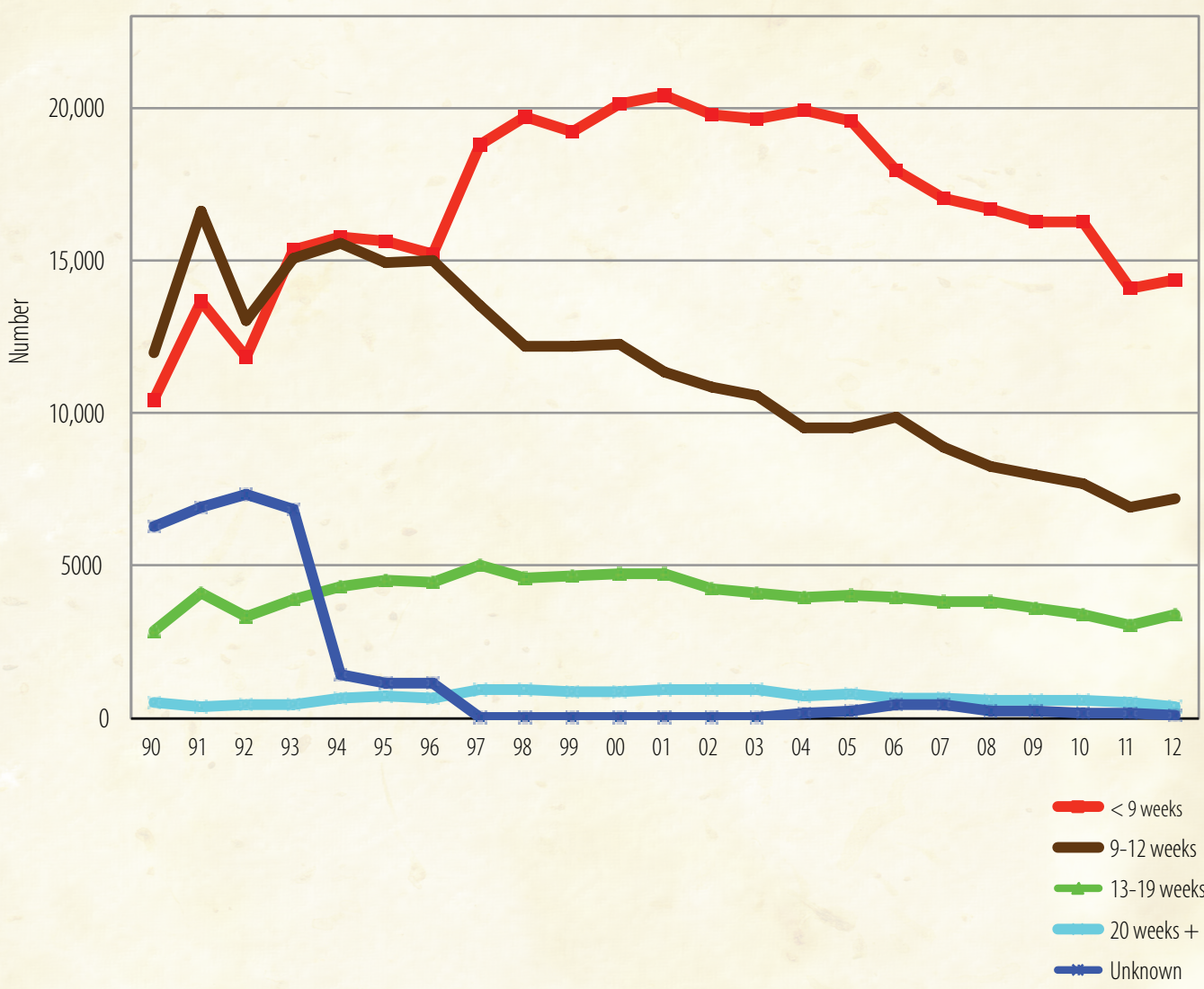


Table 1. INDUCED ABORTION SUMMARY TABLE, OHIO, 2012

CHARACTERISTICS	2012	PERCENT
TOTAL INDUCED ABORTIONS	25473	100.0
RESIDENCE:		
Ohio Resident	24080	94.5
Out-of-State Resident	1393	5.5
AGE:		
Under 20 Years	3459	13.6
20-24 Years	8623	33.9
25 Years and Over	13165	51.7
Age Not Reported	226	0.9
RACE GROUP:		
White	13109	51.5
Black	9694	38.1
American Indian	48	0.2
Asian/Pacific Islander	697	2.7
More than one race	621	2.4
Unknown	1304	5.1
HISPANIC:		
Non-Hispanic	23018	90.4
Hispanic	989	3.9
Unknown	1466	5.8

LEVEL OF EDUCATION:		
8th grade or less	334	1.3
9 to 12th grade, no diploma	4352	17.1
High School graduate or GED	9580	37.6
Some college credit, no degree	5614	22.0
Associate Degree	1433	5.6
Bachelor Degree	2488	9.8
Masters Degree	549	2.2
Doctorate or Professional Degree	93	0.4
Unknown	1030	4.0
MARITAL STATUS:		
Never Married	19618	77.0
Married	2514	9.9
Separated	626	2.5
Divorced	1405	5.5
Widowed	60	0.2
Unknown	1250	4.9
NUMBER OF LIVING CHILDREN:		
None	8323	32.7
One	6841	26.9
Two or More	9027	35.4
Not Reported	1282	5.0
WEEKS OF GESTATION:		
Less than 9 Weeks	14364	56.4
9-12 Weeks	7220	28.3
13-19 Weeks	3,434	13.5
20 Weeks and Over	367	1.4
Not Reported	88	0.3

**Table 2. SELECTED CHARACTERISTICS OF INDUCED ABORTIONS
REPORTED IN OHIO, 2000-2012**

Characteristic	2012	2011	2010	2009	2008	2007	2006	2005	2004	2003	2002	2001	2000
NUMBER OF ABORTIONS													
TOTAL INDUCED ABORTIONS	25,473	24,764	28,123	28,721	29,613	30,859	32,936	34,128	34,242	35,319	35,830	37,464	38,140
RESIDENCE:													
Ohio Resident	24,080	23,250	26,322	26,959	27,672	28,921	30,809	31,210	31,391	32,180	32,687	34,174	35,022
Out-of-State Resident	1,393	1,511	1,801	1,762	1,941	1,938	2,127	2,918	2,851	3,139	3,143	3,290	3,118
AGE:													
Under 15 Years	130	125	182	190	188	207	292	240	253	292	277	286	314
15-19 Years	3,329	3,499	4,509	4,743	5,144	5,376	5,603	5,817	5,911	6,014	6,098	6,485	6,860
20-24 Years	8,623	8,545	9,562	9,739	9,945	10,182	11,123	11,502	11,772	12,441	12,370	12,710	13,029
25-29 Years	6,204	6,014	6,636	6,547	7,192	7,355	7,720	7,968	7,655	7,836	7,984	8,531	8,885
30-34 Years	3,993	3,640	3,937	4,021	3,835	4,081	4,333	4,687	4,875	4,980	5,205	5,299	5,073
35-39 Years	2,163	1,949	2,244	2,389	2,245	2,535	2,741	2,708	2,589	2,660	2,775	2,956	2,957
40-44 Years	759	730	752	716	723	755	845	874	910	938	906	1,064	948
45 Years & Older	46	48	43	50	53	53	53	73	68	55	61	114	53
Unknown	226	214	258	326	288	315	226	259	209	103	154	19	21
EDUCATION:													
Less than Grade 9	334	342	445	533	479	579	662	653	675	756	755	797	612
Grade 9-12	13,932	15,155	17,276	17,830	18,389	18,880	20,515	20,911	21,222	22,359	22,742	23,834	24,281
1 or More College Years	10,177	8,789	9,857	8,956	10,105	10,719	11,064	11,810	11,763	11,924	11,893	12,593	12,823
None/Not Reported	1,030	478	545	685	640	681	695	754	582	280	440	240	424
RACE:													
White	13,109	13,340	15,127	15,683	16,019	17,221	18,724	19,673	19,952	20,717	20,934	22,045	22,581
Black	9,694	9,178	10,528	10,647	11,064	11,073	11,683	12,070	12,028	12,463	12,689	13,160	13,480
Asian/Pacific Islander	697	610	654	610	600	693	695	723	731	731	740	775	782
Other/Unknown/Not Reported	1,973	1,636	1,814	1,781	1,930	1,872	1,834	1,662	1,531	1,418	1,467	1,484	1,297
MARITAL STATUS:													
Never Married	19,618	19,224	21,876	22,078	22,630	23,157	24,571	25,595	25,489	26,263	26,140	27,276	27,460
Married	2,514	2,632	2,813	2,990	3,172	3,621	3,936	4,199	4,366	4,737	4,720	5,058	5,245
Separated	626	681	716	781	749	881	990	1,080	1,146	1,148	1,215	1,381	1,374
Divorced	1,405	1,334	1,558	1,630	1,712	1,826	2,174	2,296	2,462	2,663	2,892	3,104	3,300
Widowed	60	67	59	71	66	88	72	72	88	89	100	110	126
Unknown	1,250	826	1,101	1,171	1,284	1,286	1,193	886	691	419	763	535	635
NUMBER OF LIVING CHILDREN:													
No Children	8,323	7,657	9,598	9,890	10,211	10,974	11,488	9,415	9,007	9,913	10,154	10,866	11,103
One Child	6,841	6,658	7,578	7,932	8,210	8,499	9,040	9,505	9,535	9,805	9,970	10,719	11,006
Two or more Children	9,027	8,577	9,709	9,888	10,093	10,233	10,899	11,263	11,515	11,800	12,179	12,638	12,679
Unknown	1,282	1,872	1,238	1,011	1,099	1,153	1,519	3,945	4,185	3,801	3,527	3,241	3,352
WEEKS OF GESTATION:													
Less than 9 Weeks	14,364	14,105	16,283	16,264	16,663	17,023	17,955	19,549	19,933	19,610	19,755	20,432	20,161
9 - 12 Weeks	7,220	6,909	7,672	7,971	8,257	8,855	9,862	9,547	9,489	10,570	10,820	11,350	12,293
13 - 19 Weeks	3,434	3,068	3,397	3,597	3,845	3,811	3,963	4,006	3,944	4,133	4,271	4,738	4,772
20 Weeks and Over	367	525	629	613	603	690	694	793	731	961	929	921	906
Unknown	88	157	142	276	245	480	462	253	145	45	55	23	8

Table 2. INDUCED ABORTIONS, 2000-2012

Characteristic	2012	2011	2010	2009	2008	2007	2006	2005	2004	2003	2002	2001	2000
PERCENTAGE DISTRIBUTION													
TOTAL INDUCED ABORTIONS	100.0	100.0	100.0	100.0	100.0	100.0	100.0	100.0	100.0	100.0	100.0	100.0	100.0
RESIDENCE:													
Ohio Resident	94.5	93.9	93.6	93.9	93.4	93.7	93.5	91.4	91.7	91.1	91.2	91.2	91.8
Out-of-State Resident	5.5	6.1	6.4	6.1	6.6	6.3	6.5	8.6	8.3	8.9	8.8	8.8	8.2
AGE:													
Under 15 Years	0.5	0.5	0.6	0.7	0.6	0.7	0.9	0.7	0.7	0.8	0.8	0.8	0.8
15-19 Years	13.1	14.1	16.0	16.5	17.4	17.4	17.0	17.0	17.3	17.0	17.0	17.3	18.0
20-24 Years	33.9	34.5	34.0	33.9	33.6	33.0	33.8	33.7	34.4	35.2	34.5	33.9	34.2
25-29 Years	24.4	24.3	23.6	22.8	24.3	23.8	23.4	23.3	22.4	22.2	22.3	22.8	23.3
30-34 Years	15.7	14.7	14.0	14.0	13.0	13.2	13.2	13.7	14.2	14.1	14.5	14.1	13.3
35-39 Years	8.5	7.9	8.0	8.3	7.6	8.2	8.3	7.9	7.6	7.5	7.7	7.9	7.8
40-44 Years	3.0	2.9	2.7	2.5	2.4	2.4	2.6	2.6	2.7	2.7	2.5	2.8	2.5
45 Years & Older	0.2	0.2	0.2	0.2	0.2	0.2	0.2	0.2	0.2	0.2	0.2	0.3	0.1
Unknown	0.9	0.9	0.9	1.1	1.0	1.0	0.7	0.8	0.6	0.3	0.4	0.1	0.1
EDUCATION:													
Less than Grade 9	1.3	1.4	1.6	1.9	1.6	1.9	2.0	1.9	2.0	2.1	2.1	2.1	1.6
Grade 9-12	54.7	61.2	61.4	62.1	62.1	61.2	62.3	61.3	62.0	63.3	63.5	63.6	63.7
1 or More College Years	40.0	35.5	35.0	31.2	34.1	34.7	33.6	34.6	34.4	33.8	33.2	33.6	33.6
None/Not Reported	4.0	1.9	1.9	2.4	2.2	2.2	2.1	2.2	1.7	0.8	1.2	0.6	1.1
RACE:													
White	51.5	53.9	53.8	54.6	54.1	55.8	56.8	57.6	58.3	58.7	58.4	58.8	59.2
Black	38.1	37.1	37.4	37.1	37.4	35.9	35.5	35.4	35.1	35.3	35.4	35.1	35.3
Asian/Pacific Islander	2.7	2.5	2.3	2.1	2.0	2.2	2.1	2.1	2.1	2.1	2.1	2.1	2.1
Other/Unknown/Not Reported	7.7	6.6	6.5	6.2	6.5	6.1	5.6	4.9	4.5	4.0	4.1	4.0	3.4
MARITAL STATUS:													
Never Married	77.0	77.6	77.8	76.9	76.4	75.0	74.6	75.0	74.4	74.4	73.0	72.8	72.0
Married	9.9	10.6	10.0	10.4	10.7	11.7	12.0	12.3	12.8	13.4	13.2	13.5	13.8
Separated	2.5	2.7	2.5	2.7	2.5	2.9	3.0	3.2	3.3	3.3	3.4	3.7	3.6
Divorced	5.5	5.4	5.5	5.7	5.8	5.9	6.6	6.7	7.2	7.5	8.1	8.3	8.7
Widowed	0.2	0.3	0.2	0.2	0.2	0.3	0.2	0.2	0.3	0.3	0.3	0.3	0.3
Unknown	4.9	3.3	3.9	4.1	4.3	4.2	3.6	2.6	2.0	1.2	2.1	1.4	1.7
NUMBER OF LIVING CHILDREN:													
No Children	32.7	30.9	34.1	34.4	34.5	35.6	34.9	27.6	26.3	28.1	28.3	29.0	29.1
One Child	26.9	26.9	26.9	27.6	27.7	27.5	27.4	27.9	27.8	27.8	27.8	28.6	28.9
Two or more Children	35.4	34.6	34.5	34.4	34.1	33.2	33.1	33.0	33.6	33.4	34.0	33.7	33.2
Unknown	5.0	7.6	4.4	3.5	3.7	3.7	4.6	11.6	12.2	10.8	9.8	8.7	8.8
WEEKS OF GESTATION:													
Less than 9 Weeks	56.4	57.0	57.9	56.6	56.3	55.2	54.5	57.3	58.2	55.5	55.1	54.5	52.9
9 - 12 Weeks	28.3	27.9	27.3	27.8	27.9	28.7	29.9	28.0	27.7	29.9	30.2	30.3	32.2
13 - 19 Weeks	13.5	12.4	12.1	12.5	13.0	12.3	12.0	11.7	11.5	11.7	11.9	12.6	12.5
20 Weeks and Over	1.4	2.1	2.2	2.1	2.0	2.2	2.1	2.3	2.1	2.7	2.6	2.5	2.4
Unknown	0.3	0.6	0.5	1.0	0.8	1.6	1.4	0.7	0.4	0.1	0.2	0.1	0.0

Table 3. RESIDENT INDUCED ABORTIONS REPORTED IN OHIO,
BY COUNTY OF RESIDENCE, 2000-2011

Residence	2012	2011	2010	2009	2008	2007	2006	2005	2004	2003	2002	2001	2000
OHIO	24,080	23,250	26,322	26,955	27,672	28,921	30,809	31,210	31,391	32,180	32,687	34,174	35,022
Adams	11	17	22	20	16	14	28	22	15	18	15	16	22
Allen	142	146	191	173	129	121	153	206	190	159	166	153	165
Ashland	42	42	47	53	45	52	48	61	57	64	47	67	69
Ashtabula	149	157	175	200	149	185	208	187	216	214	228	228	222
Athens	89	83	109	112	101	112	100	111	123	121	119	113	131
Auglaize	22	28	28	28	36	32	42	34	37	47	39	47	54
Belmont	18	7	18	13	12	27	28	40	29	30	24	25	41
Brown	28	32	37	36	42	48	41	55	44	46	67	63	71
Butler	624	559	690	707	754	720	775	816	843	771	773	796	769
Carroll	24	28	23	34	32	35	25	23	34	32	35	38	40
Champaign	29	33	44	45	49	48	57	55	63	52	45	58	74
Clark	191	202	232	198	245	219	263	282	279	331	300	342	357
Clermont	269	233	258	293	321	289	293	317	326	326	344	385	395
Clinton	30	40	40	63	62	48	46	49	45	60	74	76	74
Columbiana	73	86	100	124	125	157	135	188	179	162	220	202	189
Coshocton	17	20	19	31	20	35	28	37	32	43	35	26	34
Crawford	30	33	32	46	41	33	42	48	55	45	58	58	74
Cuyahoga	5,663	5,828	6,598	6,794	7,056	6,986	7,252	7,412	7,565	7,889	8,466	8,644	8,906
Darke	36	27	32	28	36	44	48	32	47	47	61	45	44
Defiance	29	33	34	38	28	26	48	23	37	37	37	35	43
Delaware	155	164	144	140	135	174	188	207	171	169	142	130	178
Erie	151	101	161	157	139	160	147	209	170	183	209	227	220
Fairfield	163	149	163	157	155	205	184	208	204	184	185	179	184
Fayette	34	26	37	32	29	32	33	48	41	43	27	49	44
Franklin	3,771	3,529	3,448	3,604	3,526	4,381	4,683	4,601	4,678	4,684	4,290	4,645	4,764
Fulton	35	42	35	28	41	39	42	49	41	36	43	52	48
Gallia	5	10	6	16	5	17	18	9	17	12	15	15	19
Geauga	89	89	94	104	106	113	131	128	139	121	152	135	161
Greene	242	218	267	290	274	306	320	282	314	311	322	306	379
Guernsey	22	22	45	23	42	58	46	27	49	46	61	44	59
Hamilton	2,500	2,374	2,785	2,728	3,125	2,990	3,112	2,999	3,172	3,046	3,374	3,559	3,578
Hancock	74	51	76	90	105	86	125	129	120	115	121	109	118
Hardin	26	22	20	32	23	29	28	32	47	35	28	36	29
Harrison	7	6	10	10	7	14	6	9	6	9	13	10	15
Henry	13	17	28	32	27	24	42	31	34	28	29	23	32
Highland	27	24	38	45	38	51	44	41	50	53	49	44	46
Hocking	19	26	26	18	28	33	33	44	26	26	29	25	34
Holmes	8	16	22	25	9	19	15	22	18	19	21	22	20
Huron	67	59	64	81	60	79	94	77	79	77	101	123	118
Jackson	17	23	24	24	13	30	27	35	28	34	26	35	27
Jefferson	14	9	9	15	13	15	26	38	17	25	23	30	23
Knox	65	43	59	54	45	72	77	55	66	64	67	65	65
Lake	443	460	492	479	516	525	544	596	571	592	598	654	563
Lawrence	13	6	16	11	15	8	16	20	15	32	21	18	10

Table 3. RESIDENT INDUCED ABORTIONS, 2000-2012 (Page 2)

Residence	2012	2011	2010	2009	2008	2007	2006	2005	2004	2003	2002	2001	2000
Licking	188	205	203	201	186	252	238	250	259	257	258	259	269
Logan	32	23	38	51	45	42	64	48	50	55	59	60	78
Lorain	653	570	695	679	699	726	692	760	812	841	746	910	878
Lucas	1,189	1,239	1,565	1,565	1,434	1,356	1,803	1,633	1,603	1,566	1,481	1,558	1,600
Madison	40	35	53	46	34	54	48	75	49	53	49	66	55
Mahoning	460	422	528	572	630	713	702	791	759	845	847	847	892
Marion	85	69	69	68	71	93	84	101	75	73	74	78	95
Medina	240	210	223	293	266	270	278	292	306	322	301	318	313
Meigs	10	7	13	5	19	12	7	8	12	14	16	8	14
Mercer	19	20	27	24	19	18	31	31	36	17	44	43	46
Miami	103	107	120	113	122	119	146	139	163	158	142	158	175
Monroe	31	22	46	41	20	11	35	44	15	10	11	13	10
Montgomery	1,101	1,096	1,367	1,394	1,439	1,420	1,616	1,531	1,632	1,709	1,807	2,072	2,138
Morgan	6	4	10	10	5	7	6	7	4	10	12	9	17
Morrow	26	32	28	27	29	34	34	45	33	33	37	39	27
Muskingum	91	81	85	102	75	100	99	112	127	122	79	105	118
Noble	3	9	8	6	2	11	9	2	5	6	5	8	11
Ottawa	37	37	47	32	39	48	69	63	56	58	69	65	67
Paulding	5	3	7	8	7	12	9	10	7	3	9	5	8
Perry	29	41	33	21	22	32	44	40	34	35	32	41	41
Pickaway	54	39	50	67	52	76	72	46	71	64	52	57	62
Pike	25	19	26	15	15	27	27	20	27	19	22	31	26
Portage	316	325	354	367	379	360	374	414	429	467	422	447	430
Preble	36	29	33	32	53	46	56	45	38	44	52	56	64
Putnam	17	17	20	27	19	14	21	14	25	20	20	24	29
Richland	157	161	156	170	194	177	188	217	184	196	216	212	231
Ross	68	57	83	79	86	94	87	98	107	95	103	103	108
Sandusky	72	72	96	110	106	79	94	91	101	92	98	118	119
Scioto	42	53	47	61	57	60	65	68	74	85	61	66	81
Seneca	61	53	55	73	56	50	76	73	65	72	73	86	108
Shelby	35	34	45	45	27	53	54	59	54	74	53	54	87
Stark	636	634	745	771	752	840	831	859	795	862	900	819	851
Summit	1,301	1,352	1,428	1,469	1,601	1,660	1,742	1,798	1,677	1,889	1,870	1,882	1,810
Trumbull	333	339	370	382	445	501	504	536	493	595	633	628	683
Tuscarawas	116	97	109	97	132	121	115	156	135	170	139	153	130
Union	45	45	58	49	52	59	55	52	59	63	55	66	68
Van Wert	11	0	0	0	7	9	14	17	13	12	15	9	17
Vinton	5	9	5	12	8	8	11	13	11	14	14	17	14
Warren	277	216	265	244	270	272	251	253	246	269	266	287	265
Washington	16	18	28	23	22	27	33	28	25	37	28	41	36
Wayne	119	121	115	125	142	115	162	153	128	139	145	136	139
Williams	31	22	35	31	33	32	34	40	34	28	20	33	32
Wood	166	172	222	203	204	207	267	255	254	232	238	211	250
Wyandot	23	14	14	18	22	13	21	29	20	17	15	24	22
Unknown	294	0	0	0	0	0	0	0	0	0	0	0	0

Table 4. RESIDENT INDUCED ABORTIONS REPORTED IN OHIO,
BY COUNTY AND AGE, 2012

Residence	Total	Age Group												
		<15	15	16	17	18	19	20-24	25-29	30-34	35-39	40-44	45+	Unk.
OHIO TOTAL	24080	125	212	334	466	920	1226	8196	5824	3778	2030	711	41	217
Adams	11	0	0	0	0	0	0	4	4	1	2	0	0	0
Allen	142	0	3	1	3	9	10	51	30	20	11	3	0	1
Ashland	42	0	0	2	1	2	3	9	11	4	9	0	1	0
Ashtabula	149	0	4	1	3	7	9	59	33	13	15	2	0	3
Athens	89	0	1	2	2	4	5	37	18	14	3	1	0	2
Auglaize	22	1	0	0	0	2	1	7	5	4	2	0	0	0
Belmont	18	0	0	1	0	0	1	7	4	2	3	0	0	0
Brown	28	0	2	0	0	1	1	11	5	5	2	1	0	0
Butler	624	4	7	7	10	22	26	205	150	98	64	27	0	4
Carroll	24	0	0	1	0	0	1	5	9	3	3	0	0	2
Champaign	29	1	0	0	1	0	5	8	6	5	2	1	0	0
Clark	191	2	0	4	4	14	13	70	45	26	10	2	0	1
Clermont	269	1	5	5	4	9	17	81	72	47	22	6	0	0
Clinton	30	0	0	1	0	1	1	12	11	4	0	0	0	0
Columbiana	73	3	1	4	1	5	7	25	11	9	4	3	0	0
Coshocton	17	0	0	1	0	0	0	5	1	7	2	1	0	0
Crawford	30	0	0	0	1	1	3	11	10	3	1	0	0	0
Cuyahoga	5663	37	43	89	98	223	281	1917	1319	975	483	158	5	35
Darke	36	0	0	1	1	1	1	11	11	4	5	1	0	0
Defiance	29	0	0	1	0	2	1	8	11	4	1	1	0	0
Delaware	155	1	1	1	1	5	3	51	29	32	18	9	0	4
Erie	151	1	1	3	4	7	8	44	36	27	11	9	0	0
Fairfield	163	1	0	3	3	2	4	58	43	19	16	9	1	4
Fayette	34	0	1	1	1	2	0	14	6	3	4	1	1	0
Franklin	3771	15	26	34	54	120	155	1208	994	642	348	115	8	52
Fulton	35	0	0	1	2	0	7	13	8	2	2	0	0	0
Gallia	5	0	0	0	0	0	0	2	2	0	0	0	0	1
Geauga	89	0	0	0	2	2	6	29	14	20	7	9	0	0
Greene	242	0	0	1	4	8	12	96	51	48	12	8	1	1
Guernsey	22	0	0	1	0	1	2	3	6	4	2	1	0	2
Hamilton	2500	15	11	23	39	62	106	896	675	411	186	58	4	14
Hancock	74	1	0	0	2	5	1	33	11	9	8	4	0	0
Hardin	26	0	0	0	0	0	3	9	4	6	1	3	0	0
Harrison	7	0	1	0	1	0	0	2	2	0	1	0	0	0
Henry	13	0	0	0	0	0	0	6	1	3	2	1	0	0
Highland	27	0	0	1	0	2	1	8	7	2	4	2	0	0
Hocking	19	0	1	1	0	0	1	6	4	4	1	1	0	0
Holmes	8	0	0	0	0	1	0	4	2	1	0	0	0	0
Huron	67	0	0	1	1	2	6	19	17	11	7	2	0	1
Jackson	17	0	0	0	1	1	0	8	1	3	3	0	0	0
Jefferson	14	0	0	0	0	1	0	4	5	3	1	0	0	0
Knox	65	0	1	5	0	0	5	21	15	11	5	1	0	1
Lake	443	4	8	5	7	16	32	141	115	58	34	21	1	1
Lawrence	13	0	0	1	1	0	1	5	3	2	0	0	0	0

Table 4. RESIDENT INDUCED ABORTIONS, 2012

Residence	Total	Age Group												
		<15	15	16	17	18	19	20-24	25-29	30-34	35-39	40-44	45+	Unk.
Licking	188	1	0	3	4	11	17	71	43	19	12	2	1	4
Logan	32	0	0	3	0	3	0	12	7	3	2	1	0	1
Lorain	653	0	9	12	17	30	41	217	158	89	56	21	0	3
Lucas	1189	5	9	24	21	42	66	439	321	147	82	23	3	7
Madison	40	1	0	1	4	1	3	15	6	8	1	0	0	0
Mahoning	460	2	6	8	18	16	24	161	99	63	40	17	1	5
Marion	85	0	2	0	0	5	2	36	19	13	5	1	0	2
Medina	240	2	2	1	10	12	8	68	47	48	31	11	0	0
Meigs	10	0	0	1	0	0	0	6	2	1	0	0	0	0
Mercer	19	0	0	0	2	0	0	3	5	5	1	2	0	1
Miami	103	0	1	0	2	7	9	32	20	13	11	7	0	1
Monroe	31	0	1	0	0	2	2	9	8	3	4	1	0	1
Montgomery	1101	8	9	8	26	39	50	390	291	157	91	27	0	5
Morgan	6	0	0	0	0	0	2	2	0	0	1	1	0	0
Morrow	26	0	0	0	0	3	2	11	6	1	2	1	0	0
Muskingum	91	2	2	1	2	6	1	31	23	13	9	1	0	0
Noble	3	0	0	0	0	0	0	2	1	0	0	0	0	0
Ottawa	37	1	0	1	1	0	2	12	9	5	4	2	0	0
Paulding	5	0	1	0	0	0	0	1	2	0	0	1	0	0
Perry	29	0	2	1	1	0	0	2	10	12	1	0	0	0
Pickaway	54	0	0	1	1	7	4	16	11	7	4	1	0	2
Pike	25	0	0	0	1	0	2	8	6	3	5	0	0	0
Portage	316	1	4	4	9	11	20	135	67	27	29	7	0	2
Preble	36	0	2	0	2	1	2	12	12	2	3	0	0	0
Putnam	17	1	0	0	0	3	0	3	4	2	3	1	0	0
Richland	157	1	2	5	3	8	6	57	37	22	6	6	0	4
Ross	68	0	0	1	3	4	5	25	14	6	7	1	0	2
Sandusky	72	1	1	1	0	4	4	25	21	10	5	0	0	0
Scioto	42	0	1	1	2	2	0	22	7	4	2	1	0	0
Seneca	61	1	0	1	5	3	7	18	13	7	5	0	0	1
Shelby	35	0	0	1	0	4	2	17	5	2	3	0	1	0
Stark	636	3	8	11	16	29	33	205	144	103	51	23	1	9
Summit	1301	4	16	17	30	57	85	457	275	193	108	37	4	18
Trumbull	333	0	1	7	10	20	26	88	83	61	25	8	1	3
Tuscarawas	116	0	3	1	3	8	8	37	28	10	13	3	1	1
Union	45	0	0	0	4	3	0	13	11	8	4	1	0	1
Van Wert	11	0	0	0	0	0	1	4	0	4	2	0	0	0
Vinton	5	0	0	0	0	0	0	2	2	0	0	1	0	0
Warren	277	1	3	5	7	7	14	74	64	42	37	22	1	0
Washington	16	1	0	0	0	2	2	5	3	1	1	1	0	0
Wayne	119	0	1	1	3	6	8	43	23	22	7	3	0	2
Williams	31	0	1	1	1	2	2	8	7	5	2	2	0	0
Wood	166	1	1	4	6	6	9	76	30	21	8	4	0	0
Wyandot	23	0	1	0	0	2	1	10	6	2	1	0	0	0
Unknown	294/ 8604	1	6	5	0	14	17	93	57	45	29	9	5	13

Table 5a. RESIDENT INDUCED ABORTIONS REPORTED IN OHIO, BY SELECTED COUNTIES, RACE AND BROAD AGE GROUPS, 2012

County of Residence	Age Group							
	Race	Total	10-19	20-29	30-39	40-49	50 +	Unk
OHIO	TOTAL	24,080	3283	14,020	5808	750	2	217
	White	12042	1606	6947	2920	452	1	116
	Black	9518	1342	5675	2225	199	1	76
	Oth/Unk	2520	335	1398	663	99	0	25
Allen	TOTAL	142	26	81	31	3	0	1
	White	105	18	61	23	2	0	1
	Black	32	8	16	7	1	0	0
	Oth/Unk	5	0	4	1	0	0	0
Ashtabula	TOTAL	149	24	92	28	2	0	3
	White	127	20	80	23	1	0	3
	Black	8	2	4	2	0	0	0
	Oth/Unk	14	2	8	3	1	0	0
Athens	TOTAL	89	14	55	17	1	0	2
	White	72	13	43	14	1	0	1
	Black	7	0	5	2	0	0	0
	Oth/Unk	10	1	7	1	0	0	1
Butler	TOTAL	624	76	355	162	27	0	4
	White	395	47	236	92	18	0	2
	Black	147	14	84	42	6	0	1
	Oth/Unk	82	15	35	28	3	0	1
Clark	TOTAL	191	37	115	36	2	0	1
	White	146	25	91	28	1	0	1
	Black	33	8	19	6	0	0	0
	Oth/Unk	12	4	5	2	1	0	0
Clermont	TOTAL	269	41	153	69	6	0	0
	White	251	38	146	61	6	0	0
	Black	6	1	3	2	0	0	0
	Oth/Unk	12	2	4	6	0	0	0
Columbiana	TOTAL	73	21	36	13	3	0	0
	White	64	19	31	12	2	0	0
	Black	5	2	2	1	0	0	0
	Oth/Unk	4	0	3	0	1	0	0
Cuyahoga	TOTAL	5663	771	3236	1458	163	0	35
	White	1569	170	895	437	57	0	10
	Black	3578	541	2050	879	85	0	23
	Oth/Unk	516	60	291	142	21	0	2
Delaware	TOTAL	155	12	80	50	9	0	4
	White	113	9	64	30	7	0	3
	Black	20	1	8	10	0	0	1
	Oth/Unk	22	2	8	10	2	0	0
Erie	TOTAL	151	24	80	38	9	0	0
	White	117	14	61	34	8	0	0
	Black	22	7	11	3	1	0	0
	Oth/Unk	12	3	8	1	0	0	0
Fairfield	TOTAL	163	13	101	35	10	0	4
	White	115	8	73	24	7	0	3
	Black	42	4	25	10	2	0	1
	Oth/Unk	6	1	3	1	1	0	0
Franklin	TOTAL	3771	404	2202	990	123	0	52
	White	1586	162	936	404	60	0	24
	Black	1695	196	1001	435	41	0	22
	Oth/Unk	490	46	265	151	22	0	6
Greene	TOTAL	242	25	147	60	9	0	1
	White	138	11	83	37	6	0	1
	Black	63	9	45	9	0	0	0
	Oth/Unk	41	5	19	14	3	0	0
Hamilton	TOTAL	2500	256	1571	597	62	0	14
	White	835	65	543	195	29	0	3
	Black	1383	157	861	331	25	0	9
	Oth/Unk	282	34	167	71	8	0	2
Hancock	TOTAL	74	9	44	17	4	0	0
	White	57	7	33	14	3	0	0
	Black	6	0	5	1	0	0	0
	Oth/Unk	11	2	6	2	1	0	0
Jefferson	TOTAL	14	1	9	4	0	0	0
	White	10	0	7	3	0	0	0
	Black	4	1	2	1	0	0	0
Knox	TOTAL	65	11	36	16	1	0	1
	White	60	11	35	13	1	0	0
	Black	1	0	0	1	0	0	0
	Oth/Unk	4	0	1	2	0	0	1
Lake	TOTAL	443	72	256	92	22	0	1
	White	341	58	193	71	19	0	0
	Black	59	5	42	9	2	0	1
	Oth/Unk	43	9	21	12	1	0	0

Table 5a. RESIDENT INDUCED ABORTIONS, 2012 (Page 2)

County of Residence	Age Group							
	Race	Total	10-19	20-29	30-39	40-49	50 +	Unk
Licking	TOTAL	188	36	114	31	3	0	4
	White	162	31	100	24	3	0	4
	Black	14	2	8	4	0	0	0
	Oth/Unk	12	3	6	3	0	0	0
Lorain	TOTAL	653	109	375	145	21	0	3
	White	410	64	231	96	18	0	1
	Black	166	32	96	35	2	0	1
	Oth/Unk	77	13	48	14	1	0	1
Lucas	TOTAL	1189	167	760	229	25	1	7
	White	505	67	301	115	16	0	6
	Black	494	66	339	81	6	1	1
	Oth/Unk	190	34	120	33	3	0	0
Mahoning	TOTAL	460	74	260	103	18	0	5
	White	229	34	124	54	15	0	2
	Black	194	33	115	42	3	0	1
	Oth/Unk	37	7	21	7	0	0	2
Marion	TOTAL	85	9	55	18	1	0	2
	White	70	5	48	14	1	0	2
	Black	9	2	5	2	0	0	0
	Oth/Unk	6	2	2	2	0	0	0
Medina	TOTAL	240	35	115	79	11	0	0
	White	217	33	103	70	11	0	0
	Black	10	2	4	4	0	0	0
	Oth/Unk	13	0	8	5	0	0	0
Miami	TOTAL	103	19	52	24	7	0	1
	White	90	19	45	21	5	0	0
	Black	4	0	3	1	0	0	0
	Oth/Unk	9	0	4	2	2	0	1
Montgomery	TOTAL	1101	140	681	248	27	0	5
	White	485	57	288	124	14	0	2
	Black	507	69	328	101	7	0	2
	Oth/Unk	109	14	65	23	6	0	1
Portage	TOTAL	316	49	202	56	7	0	2
	White	240	36	151	46	6	0	1
	Black	47	8	32	7	0	0	0
	Oth/Unk	29	5	19	3	1	0	1

Richland	TOTAL	157	25	94	28	6	0	4
	White	110	19	64	21	4	0	2
	Black	35	6	21	6	1	0	1
	Oth/Unk	12	0	9	1	1	0	1
Sandusky	TOTAL	72	11	46	15	0	0	0
	White	48	6	30	12	0	0	0
	Black	9	1	5	3	0	0	0
	Oth/Unk	15	4	11	0	0	0	0
Scioto	TOTAL	42	6	29	6	1	0	0
	White	41	6	28	6	1	0	0
	Black	1	0	1	0	0	0	0
Seneca	TOTAL	61	17	31	12	0	0	1
	White	43	9	24	9	0	0	1
	Black	6	3	3	0	0	0	0
	Oth/Unk	12	5	4	3	0	0	0
Stark	TOTAL	636	100	349	154	24	0	9
	White	431	63	229	115	18	0	6
	Black	150	29	90	24	4	0	3
	Oth/Unk	55	8	30	15	2	0	0
Summit	TOTAL	1301	209	732	301	41	0	18
	White	660	94	368	157	29	0	12
	Black	503	95	292	108	5	0	3
	Oth/Unk	138	20	72	36	7	0	3
Trumbull	TOTAL	333	64	171	86	9	0	3
	White	249	48	120	69	9	0	3
	Black	63	12	41	10	0	0	0
	Oth/Unk	21	4	10	7	0	0	0
Warren	TOTAL	277	37	138	79	23	0	0
	White	230	31	117	64	18	0	0
	Black	10	2	6	0	2	0	0
	Oth/Unk	37	4	15	15	3	0	0
Wayne	TOTAL	119	19	66	29	3	0	2
	White	103	17	55	26	3	0	2
	Black	6	1	4	1	0	0	0
	Oth/Unk	10	1	7	2	0	0	0
Wood	TOTAL	166	27	106	29	4	0	0
	White	132	22	85	22	3	0	0
	Black	16	3	9	4	0	0	0
	Oth/Unk	18	2	12	3	1	0	0

TABLE 5b. RESIDENT INDUCED ABORTIONS REPORTED IN OHIO, BY SELECTED COUNTIES, RACE AND AGE, 2012

County/Race		Total	Age Group															
			<15	15	16	17	18	19	15-19	20	21	20-24	25-29	30-34	35-39	40-44	45+	Unk.
OHIO	Total	24080	125	212	334	466	920	1226	3158	1537	1731	8196	5824	3778	2030	711	41	217
	White	12042	47	101	161	236	453	608	1559	776	856	4069	2878	1800	1120	430	23	116
	Black	9517	60	87	144	182	376	492	1281	608	710	3330	2345	1553	672	191	9	76
	Oth/Unk	2520	17	24	29	48	91	126	318	153	165	797	601	425	238	90	9	25
Butler	Total	624	4	7	7	10	22	26	72	37	39	205	150	98	64	27	0	4
	White	395	1	5	5	7	13	16	46	23	24	139	97	58	34	18	0	2
	Black	147	0	1	1	2	5	5	14	8	8	42	42	23	19	6	0	1
	Oth/Unk	82	3	1	1	1	4	5	12	6	7	24	11	17	11	3	0	1
Cuyahoga	Total	5663	37	43	89	98	223	281	734	379	398	1917	1319	975	483	158	5	35
	White	1569	4	9	14	24	53	66	166	111	97	515	380	250	187	55	2	10
	Black	3577	27	28	71	69	152	193	513	236	256	1227	823	628	251	83	2	23
	Oth/Unk	516	5	6	4	5	18	22	55	32	45	175	116	97	45	20	1	2
Franklin	Total	3771	15	26	34	54	120	155	389	203	244	1208	994	642	348	115	8	52
	White	1586	5	12	13	21	48	63	157	89	114	546	390	256	148	56	4	24
	Black	1695	8	13	15	25	58	77	188	94	106	528	473	282	153	39	2	22
	Oth/Unk	490	2	1	6	8	14	15	44	20	24	134	131	104	47	20	2	6
Greene	Total	242	0	0	1	4	8	12	25	18	21	96	51	48	12	8	1	1
	White	138	0	0	1	2	4	4	11	13	8	52	31	31	6	5	1	1
	Black	63	0	0	0	1	3	5	9	3	13	35	10	8	1	0	0	0
	Oth/Unk	41	0	0	0	1	1	3	5	2	0	9	10	9	5	3	0	0

Table 5b. RESIDENT INDUCED ABORTIONS, 2012 (Page 2)

			Age Group																
County/Race		Total	<15	15	16	17	18	19	15-19	20	21	20-24	25-29	30-34	35-39	40-44	45+	Unk.	
Hamilton	Total	2500	15	11	23	39	62	106	241	161	169	896	675	411	186	58	4	14	
	White	835	3	1	5	14	16	26	62	60	56	304	239	126	69	27	2	3	
	Black	1383	11	8	16	19	41	62	146	87	96	499	362	244	87	25	0	9	
	Oth/Unk	282	1	2	2	6	5	18	33	14	17	93	74	41	30	6	2	2	
Lorain	Total	653	0	9	12	17	30	41	109	45	47	217	158	89	56	21	0	3	
	White	410	0	3	7	14	15	25	64	24	33	140	91	53	43	18	0	1	
	Black	166	0	5	4	2	11	10	32	10	13	55	41	27	8	2	0	1	
	Oth/Unk	77	0	1	1	1	4	6	13	11	1	22	26	9	5	1	0	1	
Lucas	Total	1189	5	9	24	21	42	66	162	67	92	439	321	147	82	23	3	7	
	White	505	2	2	14	9	17	23	65	24	32	166	135	73	42	16	0	6	
	Black	494	2	4	6	8	17	29	64	25	48	203	136	58	23	5	2	1	
	Oth/Unk	190	1	3	4	4	8	14	33	18	12	70	50	16	17	2	1	0	
Montgomery	Total	1101	8	9	8	26	39	50	132	61	88	390	291	157	91	27	0	5	
	White	485	1	2	3	13	19	19	56	23	35	161	127	77	47	14	0	2	
	Black	507	5	7	4	13	14	26	64	31	46	191	137	67	34	7	0	2	
	Oth/Unk	109	2	0	1	0	6	5	12	7	7	38	27	13	10	6	0	1	
Summit	Total	1301	4	16	17	30	57	85	205	100	104	457	275	193	108	37	4	18	
	White	660	2	8	1	13	30	40	92	51	53	227	141	92	65	28	1	12	
	Black	503	2	8	12	15	19	39	93	42	42	188	104	75	33	4	1	3	
	Oth/Unk	138	0	0	4	2	8	6	20	7	9	42	30	26	10	5	2	3	

TABLE 6. INDUCED ABORTIONS REPORTED IN OHIO, BY COUNTY OF OCCURRENCE, 2000 - 2012

County of Occurrence	2012	2011	2010	2009	2008	2007	2006	2005	2004	2003	2002	2001	2000
TOTAL	25,473	24,764	28,123	28,721	29,613	30,859	32,936	34,128	34,242	35,319	35,830	37,464	38,140
Allen County	0	6	33	0	0	0	0	0	0	0	0	0	0
Brown County	5	0	0	0	0	0	0	0	0	0	0	0	0
Clark County	0	0	0	0	0	1	0	0	0	0	0	0	0
Cuyahoga County	9,201	8,908	10,352	10,317	10,038	9,700	10,161	10,797	10,989	11,486	11,801	12,534	12,706
Erie County	0	0	1	0	1	0	0	0	0	0	0	0	0
Franklin County	5,698	5,640	5,391	5,581	5,222	6,594	6,778	6,728	6,856	6,869	6,253	6,556	6,760
Greene County	0	19	335	432	140	312	424	218	270	0	0	0	0
Hamilton County	4,601	4,363	4,995	4,825	5,663	5,114	5,583	6,051	6,431	6,392	6,961	7,216	6,955
Licking County	0	0	0	0	0	0	0	0	0	1	0	0	0
Lucas County	1,960	2,318	2,563	2,548	2,338	2,212	2,851	2,691	2,425	2,383	2,366	2,445	2,665
Mahoning County	0	0	20	572	690	817	820	835	912	955	1,049	1,132	1,223
Montgomery County	1,931	1,701	2,078	2,088	2,411	2,403	2,618	2,752	2,688	2,976	3,011	3,398	3,874
Shelby County	2	0	0	0	0	0	0	0	0	0	0	0	0
Stark County	0	1	0	0	1	0	0	0	0	0	0	0	1
Summit County	2,075	1,808	2,355	2,358	3,109	3,667	3,701	4,056	3,671	4,257	4,389	4,183	3,956
Ohio County Unknown	0	0	0	0	0	39	0	0	0	0	0	0	0

Total 2012 abortions reported in Ohio by source:

Ambulatory Surgical Facility = 25,361

Hospital = 112

TABLE 7. INDUCED ABORTIONS REPORTED IN OHIO, BY METHOD OF TERMINATION AND COUNTY OF OCCURRENCE, 2012

County of Occurrence	Total	SURGICAL						NON-SURGICAL			
		Curretage Suction	D & Ext	D & Evac	Hysterotomy	Hysterectomy	Other Surg	Mife-Pristone	Metho-Trexate	Other Non-Surg	Not Reported
OHIO TOTAL	25473	20668	46	2947	3	36	471	806	63	499	780
Brown	5	2	0	2	0	0	0	0	0	0	1
Cuyahoga	9201	6780	17	1471	1	10	202	496	34	334	304
Franklin	5698	4967	15	283	0	20	221	194	5	108	173
Hamilton	4601	4003	1	492	1	0	1	4	0	42	112
Lucas	1960	1632		243	1	3	20	23	0	2	50
Montgomery	1931	1528	2	329	0	1	1	0	0	4	70
Shelby	2	0	0	0	0	0	2	0	0	0	0
Summit	2075	1756	4	127	0	2	24	89	24	9	70

Note: More than one method can be reported for a procedure.

TABLE 8a. TOTAL INDUCED ABORTIONS REPORTED IN OHIO,
BY GESTATIONAL AGE, 2012

Gestational Age	Number	Percent
Total Abortions Reported	25,473	100.0
Less than 9 Weeks	14,364	56.4
9 - 12 Weeks	7,220	28.3
13 - 19 Weeks	3,434	13.5
20 Weeks	187	0.7
21 - 24	176	0.7
25 - 36 Weeks	4	0.0
Unknown	88	0.3

TABLE 8b. METHOD USED TO DETERMINE GESTATIONAL
AGE OF FETUS, OHIO, 2012

Method	Number	Percent
Clinical Exam	919	3.6
Last menstrual period	1400	5.5
Ultrasound	24654	96.8
Other	54	0.2

Note: More than one method of estimation can be reported.

TABLE 9. RESIDENT INDUCED ABORTIONS IN OHIO, BY AGE OF WOMEN OBTAINING ABORTION AND BY NUMBER OF PRIOR INDUCED ABORTIONS, 2012

Age Group	Total	Prior Induced Abortion						
		0	1	2	3	4	5+	Unk
Total Abortions	24,080	7,848	6,480	5,005	2,218	830	493	1,206
Under 15	124	99	5	1	1	0	0	18
15-19	3,158	2,233	492	88	6	1	0	338
20-24	8,196	3,347	2,650	1,267	326	66	27	513
25-29	5,824	1,297	1,755	1,505	694	251	109	213
30-34	3,778	495	954	1,167	640	267	189	66
35-39	2,030	217	414	670	388	179	129	33
40-44	711	78	145	257	133	53	36	9
45-59	41	5	10	11	8	5	1	1
Unknown	218	77	55	39	22	8	2	15

TABLE 10a. TOTAL INDUCED ABORTIONS IN OHIO WITH POST-ABORTION COMPLICATIONS, BY TYPE OF COMPLICATION, 2012
(DATA SOURCE IS 'CONFIDENTIAL ABORTION REPORTING FORM', Box 23)

Complication Type	Number of Complications	Percent of Abortions with Complications
Perforation of Uterus	0	0.00%
Cervical Laceration	26	55.32%
Hemorrhage	3	6.38%
Incomplete Abortion	0	0.00%
Hematometra	6	12.77%
Anesthetic	0	0.00%
Failed Abortion	3	6.38%
Infection	0	0.00%
Death	0	0.00%
Other	12	25.53%
Total Number of Complications*	50	Not Applicable
Total Abortions with One or More Complications	47	100.0%

NOTE: An abortion may have more than one reported complication.

TABLE 10b. TOTAL INDUCED ABORTIONS IN OHIO WITH POST-ABORTION COMPLICATIONS, BY TYPE OF COMPLICATION, 2012
(DATA SOURCE IS 'POST-ABORTION CARE REPORT FOR COMPLICATIONS', Box 8)

Complication Type	Number of Complications	Percent of Abortions with Complications
Perforation of Uterus	2	1.64%
Cervical Laceration	0	0.00%
Hemorrhage	16	13.11%
Incomplete Abortion	36	29.51%
Hematometra	32	26.23%
Anesthetic	0	0.00%
Failed Abortion	13	10.66%
Infection	22	18.03%
Death	0	0.00%
Other	15	12.30%
Total Number of Complications*	136	Not Applicable
Total Abortions with One or More Complications	122	100.0%

NOTE: An abortion may have more than one reported complication.

TABLE 11. TOTAL INDUCED ABORTIONS IN OHIO WITH POST-ABORTION COMPLICATIONS, BY TYPE OF COMPLICATION AND GESTATION PERIOD, 2012

(DATA SOURCE IS POST-ABORTION CARE REPORT FOR COMPLICATIONS', Box 4 and Box 8)

Complication Type	Total	Gestation Period				
		< 9 Wks	9-12 Wks	13-19 Wks	20+ Wks	Unk
		(Number of Complications)				
Perforation of Uterus	2	0	0	0	1	1
Cervical Laceration	0	0	0	0	0	0
Hemorrhage	16	9	2	4	0	1
Incomplete Abortion	36	27	6	3	0	0
Hematometra	32	16	12	3	0	1
Anesthetic	0	0	0	0	0	0
Failed Abortion	13	11	1	0	0	1
Infection	22	13	4	2	2	1
Death	0	0	0	0	0	0
Other/Unreported	15	4	7	1	3	0
Total Number of Complications*	136	80	32	13	6	5
Total Abortions with One or More Complications	122	75	30	9	4	4

NOTE: An abortion may have more than one reported complication.

TABLE 12. RESIDENT INDUCED ABORTIONS BY ZIP CODE OF PATIENT, OHIO, 2012

Zip Code	Total	Zip Code	Total	Zip Code	Total	Zip Code	Total
43001	4	43072	3	43154	2	43265	1
43003	5	43074	12	43160	20	43268	2
43004	66	43076	15	43162	2	43275	1
43005	1	43078	18	43164	2	43302	56
43008	1	43080	2	43165	1	43310	2
43009	2	43081	138	43167	1	43311	16
43011	7	43082	16	43201	124	43314	1
43012	2	43084	1	43202	60	43315	3
43013	4	43085	33	43203	46	43316	5
43014	4	43086	1	43204	101	43318	2
43015	50	43102	1	43205	56	43319	1
43016	79	43103	13	43206	75	43320	1
43017	54	43105	8	43207	125	43321	1
43018	3	43106	1	43208	1	43322	2
43019	6	43107	3	43209	78	43326	10
43021	12	43108	1	43210	18	43327	1
43022	2	43109	1	43211	99	43330	1
43023	10	43110	104	43212	59	43331	4
43025	6	43112	5	43213	145	43332	4
43026	86	43113	20	43214	45	43334	9
43027	2	43115	1	43215	53	43335	1
43028	13	43116	6	43216	1	43337	2
43030	2	43119	66	43217	7	43338	6
43031	20	43123	105	43218	1	43342	3
43035	39	43125	27	43219	148	43344	7
43040	34	43126	2	43220	55	43345	1
43044	7	43127	1	43221	51	43346	1
43045	4	43128	3	43222	13	43351	12
43046	2	43130	52	43223	62	43358	2
43050	32	43132	1	43224	178	43360	1
43052	1	43133	1	43225	2	43361	1
43054	29	43134	1	43226	1	43382	1
43055	69	43135	3	43227	117	43400	1
43056	16	43136	4	43228	156	43402	57
43058	1	43137	5	43229	271	43403	10
43060	1	43138	13	43230	120	43404	1
43061	4	43140	22	43231	112	43406	2
43062	44	43143	5	43232	245	43408	2
43063	1	43145	6	43233	1	43410	13
43064	9	43146	9	43235	86	43412	5
43065	33	43147	60	43236	2	43413	1
43066	3	43148	2	43239	4	43416	1
43068	200	43149	2	43240	9	43420	35
43069	1	43150	3	43246	1	43426	1
43071	3	43152	1	43250	1	43430	3
43431	4	43560	35	43731	5	43968	5
43432	2	43562	1	43732	2	43973	1

43439	1	43564	2	43734	1	43976	2
43440	4	43566	5	43738	1	43986	1
43442	2	43567	13	43739	4	43988	1
43443	1	43569	2	43740	1	44001	20
43445	1	43570	3	43746	1	44002	1
43447	1	43571	7	43748	1	44003	4
43449	9	43600	1	43749	1	44004	67
43450	5	43601	2	43755	2	44007	1
43452	18	43602	4	43756	1	44010	3
43456	1	43603	1	43758	2	44011	31
43457	2	43604	119	43761	1	44012	24
43460	10	43605	84	43762	3	44013	1
43462	1	43606	79	43764	5	44014	2
43465	9	43607	99	43771	3	44017	35
43466	2	43608	69	43772	1	44019	1
43469	5	43609	103	43773	2	44021	2
43470	2	43610	24	43775	1	44022	17
43501	1	43611	41	43777	3	44023	16
43503	1	43612	78	43780	1	44024	35
43504	1	43613	72	43783	3	44025	1
43506	13	43614	67	43793	2	44026	11
43507	1	43615	128	43801	2	44028	11
43512	26	43616	28	43802	1	44030	27
43515	8	43617	11	43804	2	44032	2
43516	1	43618	1	43812	9	44034	2
43517	2	43619	6	43821	7	44035	194
43518	2	43620	20	43822	6	44037	2
43521	2	43623	31	43824	2	44038	2
43522	5	43635	1	43827	1	44039	53
43525	1	43643	1	43830	4	44040	1
43526	1	43650	1	43832	6	44041	21
43527	3	43654	1	43843	1	44042	2
43528	20	43676	1	43845	6	44044	24
43533	1	43701	63	43855	1	44045	2
43534	1	43702	1	43907	2	44046	7
43537	34	43705	1	43908	1	44047	11
43541	1	43707	1	43910	1	44048	4
43542	2	43709	1	43912	1	44049	3
43543	8	43713	8	43920	13	44050	7
43544	1	43719	1	43934	1	44052	115
43545	8	43720	1	43935	2	44053	45
43551	34	43723	6	43940	1	44054	24
43554	1	43724	2	43943	1	44055	59
43556	1	43725	8	43945	1	44056	26
43557	2	43727	1	43947	2	44057	30
43558	7	43728	1	43950	3	44059	2
43559	1	43730	1	43952	2	44060	81

continue on page 30

Zip Code	Total	Zip Code	Total	Zip Code	Total	Zip Code	Total
44061	1	44122	88	44215	4	44308	2
44062	4	44123	107	44216	10	44309	8
44063	2	44124	98	44217	2	44310	79
44064	3	44125	139	44218	2	44311	34
44065	9	44126	26	44220	2	44312	51
44067	25	44127	33	44221	75	44313	68
44068	3	44128	246	44223	23	44314	63
44069	1	44129	86	44224	71	44315	2
44070	68	44130	137	44225	1	44317	1
44072	2	44131	13	44230	8	44319	41
44074	18	44132	138	44231	13	44320	91
44076	5	44133	53	44233	5	44321	29
44077	111	44134	97	44234	2	44323	1
44081	10	44135	133	44236	19	44325	1
44082	3	44136	42	44240	105	44332	1
44084	8	44137	188	44241	38	44333	18
44085	5	44138	29	44242	3	44338	1
44087	48	44139	58	44243	7	44362	1
44089	16	44140	18	44244	1	44401	1
44090	13	44141	12	44245	1	44402	3
44091	2	44142	56	44246	3	44403	2
44092	47	44143	84	44248	1	44404	3
44094	88	44144	70	44253	10	44405	12
44095	74	44145	48	44254	12	44406	21
44096	1	44146	263	44255	14	44408	10
44097	1	44147	36	44256	83	44409	1
44099	1	44149	18	44260	24	44410	22
44100	2	44150	3	44262	2	44411	4
44101	2	44152	2	44264	3	44412	7
44102	241	44155	1	44266	53	44416	1
44103	129	44157	1	44270	11	44417	2
44104	260	44158	2	44272	10	44420	23
44105	292	44159	1	44273	9	44423	1
44106	135	44165	1	44275	6	44425	18
44107	192	44168	1	44276	2	44427	1
44108	228	44178	1	44278	32	44428	6
44109	156	44185	2	44280	2	44429	6
44110	176	44201	10	44281	31	44430	9
44111	148	44202	25	44286	14	44431	1
44112	176	44203	71	44287	6	44432	7
44113	95	44204	2	44288	8	44436	6
44114	25	44206	2	44300	1	44437	1
44115	93	44207	1	44301	52	44438	6
44116	29	44208	2	44302	18	44440	5
44117	54	44210	2	44303	17	44441	2
44118	177	44211	2	44304	31	44442	3
44119	74	44212	85	44305	79	44443	3
44120	300	44213	1	44306	115	44444	17
44121	197	44214	5	44307	43	44445	3

44446	23	44612	3	44706	28	44866	1
44449	2	44613	2	44707	29	44867	3
44450	3	44614	16	44708	37	44870	97
44451	2	44615	15	44709	42	44871	1
44452	3	44618	4	44710	27	44875	8
44454	1	44620	1	44714	19	44878	5
44455	1	44621	6	44718	21	44882	1
44460	23	44622	31	44720	51	44883	23
44466	1	44624	3	44721	13	44889	5
44470	3	44626	5	44722	1	44890	13
44471	22	44627	1	44730	3	44902	6
44473	4	44629	2	44735	1	44903	34
44480	1	44632	19	44780	1	44904	16
44481	15	44634	3	44802	2	44905	20
44482	1	44638	3	44803	2	44906	28
44483	62	44641	25	44805	26	44907	23
44484	39	44643	2	44809	1	44924	1
44485	54	44644	3	44810	2	44969	1
44489	1	44646	75	44811	10	45001	4
44490	1	44647	26	44813	4	45002	13
44491	3	44651	1	44814	3	45005	38
44501	1	44652	1	44815	1	45011	134
44502	30	44653	1	44817	1	45012	4
44503	3	44654	2	44818	1	45013	70
44504	10	44656	3	44820	8	45014	121
44505	51	44657	10	44822	3	45015	29
44506	6	44661	1	44824	2	45029	2
44507	19	44662	3	44826	1	45030	24
44509	41	44663	43	44827	8	45033	1
44510	8	44666	3	44830	25	45034	2
44511	41	44667	19	44833	13	45036	43
44512	76	44670	1	44836	2	45039	30
44514	14	44672	5	44837	3	45040	70
44515	64	44676	4	44838	1	45041	1
44517	1	44677	6	44839	18	45042	37
44519	1	44680	7	44841	1	45044	88
44551	2	44681	3	44842	5	45050	9
44552	1	44683	8	44843	3	45052	8
44555	1	44685	24	44846	1	45053	2
44560	1	44687	1	44847	6	45054	1
44570	1	44688	3	44850	2	45056	47
44580	1	44689	1	44851	8	45062	1
44590	1	44691	39	44852	2	45063	2
44600	1	44695	1	44853	3	45064	5
44601	64	44701	3	44854	2	45065	7
44603	1	44702	1	44855	3	45066	26
44606	3	44703	18	44857	21	45067	19
44608	2	44704	11	44859	4	45068	12
44609	5	44705	56	44865	3	45069	87

continue on page 31

Zip Code	Total	Zip Code	Total	Zip Code	Total	Zip Code	Total
45071	1	45209	29	45305	13	45385	46
45082	1	45210	2	45306	1	45387	9
45090	1	45211	155	45307	2	45389	2
45092	1	45212	63	45308	1	45397	1
45101	1	45213	56	45309	9	45402	39
45102	45	45214	54	45311	3	45403	38
45103	63	45215	76	45312	2	45404	23
45104	1	45216	28	45314	3	45405	63
45106	11	45217	22	45315	7	45406	79
45107	9	45218	5	45317	2	45407	3
45113	5	45219	70	45318	2	45408	2
45118	4	45220	44	45319	1	45409	16
45120	2	45222	1	45320	16	45410	34
45121	4	45223	83	45322	30	45414	35
45122	7	45224	74	45323	3	45415	24
45123	8	45225	63	45324	92	45416	21
45130	5	45226	15	45325	1	45417	113
45133	18	45227	54	45326	1	45418	6
45135	3	45229	53	45327	7	45419	19
45136	1	45230	46	45328	2	45420	49
45138	1	45231	159	45331	11	45421	2
45140	55	45232	54	45333	3	45422	1
45144	2	45233	15	45334	1	45424	78
45146	1	45234	4	45335	6	45426	59
45147	1	45236	57	45338	7	45427	7
45148	3	45237	103	45339	1	45429	42
45150	52	45238	123	45341	3	45430	6
45152	12	45239	107	45342	69	45431	47
45153	2	45240	128	45344	26	45432	17
45154	7	45241	35	45345	9	45433	4
45157	9	45242	31	45346	6	45434	8
45158	1	45243	8	45347	6	45435	1
45159	1	45244	37	45349	1	45437	1
45160	1	45245	31	45354	1	45439	31
45162	3	45246	47	45356	26	45440	30
45167	2	45247	36	45357	1	45449	45
45168	2	45248	32	45359	2	45450	2
45171	2	45249	25	45365	25	45453	1
45176	8	45251	57	45368	2	45458	44
45177	14	45252	10	45369	2	45459	22
45183	1	45253	1	45370	2	45465	1
45201	5	45255	24	45371	19	45475	1
45202	69	45257	3	45373	35	45501	1
45203	21	45264	1	45377	23	45502	23
45204	24	45271	1	45380	4	45503	55
45205	93	45283	1	45381	3	45504	23
45206	47	45302	3	45382	1	45505	36
45207	46	45303	2	45383	5	45506	16
45208	21	45304	5	45384	9	45512	1

45540	2	45656	2	45727	1	45836	2
45541	1	45657	4	45732	7	45837	1
45542	1	45658	1	45740	1	45840	67
45559	1	45659	1	45750	11	45841	1
45601	60	45660	1	45760	1	45844	1
45603	1	45661	9	45764	5	45845	2
45604	1	45662	18	45766	1	45846	2
45606	1	45663	3	45770	1	45850	2
45609	1	45664	1	45771	1	45853	2
45612	1	45671	1	45772	1	45856	2
45613	4	45672	1	45775	1	45859	1
45616	2	45679	1	45776	1	45862	2
45618	1	45680	1	45779	3	45865	3
45619	1	45686	1	45780	4	45871	2
45620	1	45690	10	45784	1	45872	5
45621	1	45692	6	45786	1	45874	2
45623	2	45693	3	45792	1	45875	6
45626	1	45694	7	45801	27	45879	2
45628	4	45696	1	45804	19	45880	1
45631	4	45697	2	45805	30	45882	2
45638	2	45701	62	45806	11	45885	5
45640	6	45709	1	45807	8	45887	2
45645	1	45710	5	45810	6	45891	5
45646	1	45711	1	45812	5	45895	10
45647	3	45714	2	45817	6	45896	1
45648	6	45716	3	45822	7	45995	1
45651	4	45723	1	45827	1	99999	444
45652	1	45724	1	45830	4		
45653	1	45725	1	45833	6		

TABLE 13. CONTRACEPTIVE HISTORY AT TIME OF CONCEPTION AND CONTRACEPTION RECOMMENDATIONS PROVIDED AT DISCHARGE, OHIO, 2012

Type of Contraception	History(at conception)	Recommended (after procedure)
Yes, Any Type	6,753	
Cervical Cap	13	51
Hormone Implant	11	348
IUD	90	1,660
Condom, Male	3,098	7,592
Oral Contraceptive	2,041	11,086
Vaginal Ring	425	1,450
Contraceptive Injection	264	0
Condom, Female	99	147
Foam	49	0
Diaphragm	11	45
Hormone Patch	51	129
Rhythm	66	0
DepoProvera	0	1,706
Other	361	3,134
None	14,446	
Unknown	4,274	

TABLE 14. PREGNANCY HISTORY OF WOMEN WHO OBTAINED INDUCED TERMINATIONS IN OHIO, 2012

Number of Specified Pregnancies	Number of Women With Specified Number of Previous Pregnancies	Number of Women With Specified Number of Prior Spontaneous Abortions	Number of Women With Specified Number of Prior Induced Abortions
Total	54,521	6,403	18,385
0	5,806	18,136	12,366
1	4,773	3,513	6,780
2	4,417	793	2,621
3	3,503	199	1,009
4	2,367	52	350
5	1,459	30	151
6	865	21	82
7	468	10	35
8	232	3	15
9	150	1	10
10	71	3	5
11	43	6	7
12	26	2	4
13	13	0	2
14	5	0	1
15	4	0	1
16	2	0	0
17	4	0	0
18	1	0	0
19	2	0	0
20	1	0	0
Unknown	1,261	2,704	2,034

TABLE 15. SELECTED MEDICAL INFORMATION FROM CONFIDENTIAL
ABORTION REPORTS, OHIO, 2012

Discharge instruction given as per O.A.C. 3701-47-02

(Restricted to women obtaining procedure at 14+ weeks gestation)

Yes	2,178
-----	-------

No	3
----	---

Not Indicated	694
---------------	-----

Medical condition of the woman at time of abortion

Good	24,865
------	--------

Other	608
-------	-----

Type of procedure done immediately after the abortion

None	25,094
------	--------

Other	379
-------	-----

TABLE 16. TYPE OF COUNSELING PROVIDED TO WOMEN
OBTAINING TERMINATIONS, OHIO, 2012

Type of Counseling	Number
Psychological	234
Social services	3,528
Pastoral	32
Medical	15,131
Other	96
None	10,206

Note: A single patient could receive one or more counseling types.

TABLE 17. TIMING OF MEDICAL EXAM FOR TERMINATIONS PERFORMED,
INDUCED, OR ATTEMPTED AFTER 19 COMPLETED WEEKS GESTATION,
OHIO, 2012

(Data Source: 'Medical Information for Abortions, Performed, Induced or Attempted after 19 Completed Weeks of Gestation', Box 28a)

Medical Exam performed within 48 hours	
Yes	353
No	2
Not Indicated	6

TABLE 18. VIABILITY DETERMINATION AND TYPE OF TESTING USED TO DETERMINE VIABILITY FOR TERMINATIONS PERFORMED, INDUCED OR ATTEMPTED AFTER 19 COMPLETED WEEKS GESTATION, OHIO, 2012

(Data Source: 'Medical Information for Abortions, Performed, Induced or Attempted after 19 Completed Weeks of Gestation', Box 29a and Box 29b)

Viability Judgement	
Viable	3
Not Viable	337
Not Indicated	21
Type of viability testing	
Ultrasound	356
Lung Maturity Testing	1
Genetic Testing	7
Amniocentesis	4
Chorionic Villus Sampling	0
Cordecentesis	0
Weight (Ultrasound Estimate)	50
Maternal Serum Alpha-Fetoprotein	1
Other	78

NOTE: More than one type of test to determine viability may be reported.

Confidential Abortion Report

Ohio Department of Health
(Required pursuant to R.C.3701.79)

1. Facility Name:		For State Use Only
2. Address:	Zip Code of Facility:	

General Information

3. Zip code of address of the woman:		County of Residence (specify):	State of Residence:
4. Woman's Identification number:	5. Age of woman:	6. Specify highest degree or level of school completed: <input type="checkbox"/> 8th grade or less <input type="checkbox"/> 9 th -12 th grade <input type="checkbox"/> High School Grad/GED <input type="checkbox"/> Some College/No degree <input type="checkbox"/> Associate's Degree <input type="checkbox"/> Bachelor's Degree <input type="checkbox"/> Master's Degree <input type="checkbox"/> Doctorate Degree <input type="checkbox"/> Unknown	
7. Marital status, please select one: <input type="checkbox"/> Never Married <input type="checkbox"/> Divorced <input type="checkbox"/> Married <input type="checkbox"/> Widowed <input type="checkbox"/> Separated <input type="checkbox"/> Unknown		8a. Race or ethnic group, please select all that apply: <input type="checkbox"/> White <input type="checkbox"/> Asian <input type="checkbox"/> Black <input type="checkbox"/> Pacific Islander <input type="checkbox"/> American Indian <input type="checkbox"/> Unknown <input type="checkbox"/> Other (specify) _____	8b. Is the woman of Hispanic origin? <input type="checkbox"/> Yes <input type="checkbox"/> No <input type="checkbox"/> Unknown

Medical History, Physical, & Assessment

9. Number of living children: <input type="text"/> <input type="text"/>		10. Date of last live birth: M M D D Y Y <input type="checkbox"/> Unknown ____/____/____	
11.a Number of prior spontaneous abortions: <input type="text"/> <input type="text"/>	11.b Number of prior induced abortions: <input type="text"/> <input type="text"/>	12. Date of last induced abortion: M M D D Y Y <input type="checkbox"/> Unknown ____/____/____	
13. Number of previous pregnancies: <input type="text"/> <input type="text"/>		14. Contraceptive History: Was the woman practicing contraception at the time of conception? <input type="checkbox"/> Yes <input type="checkbox"/> No <input type="checkbox"/> Unknown	
15. Method. If yes to number 14, what was the method used? <input type="checkbox"/> Cervical Cap <input type="checkbox"/> Hormone Implant <input type="checkbox"/> IUD <input type="checkbox"/> Condom (male) <input type="checkbox"/> Oral Contraceptive <input type="checkbox"/> Vaginal Ring <input type="checkbox"/> Contraceptive Injection <input type="checkbox"/> Condom (female) <input type="checkbox"/> Foam <input type="checkbox"/> Diaphragm <input type="checkbox"/> Hormone Patch <input type="checkbox"/> Rhythm <input type="checkbox"/> Other _____			16. First day of last menstrual period: M M D D Y Y ____/____/____ <input type="checkbox"/> Unknown

Medical Procedure

17. Date of Termination: M M D D Y Y ____/____/____	18a. Clinical Estimate of Gestational Age: Weeks <input type="text"/> <input type="text"/> Days <input type="text"/>	18b. Method used to determine gestational age of the fetus: <input type="checkbox"/> Clinical Exam <input type="checkbox"/> LMP <input type="checkbox"/> Ultrasound <input type="checkbox"/> Other _____	19. If 18a is 14 weeks or greater, were discharge instructions given as per O.A.C. 3701-47-02? <input type="checkbox"/> Yes <input type="checkbox"/> No
20. Method of Termination: <input type="checkbox"/> Suction Dilation & Curettage <input type="checkbox"/> Dilation & Evacuation (D&E) <input type="checkbox"/> Medical (NonSurgical) (specify) <input type="checkbox"/> Hysterectomy <input type="checkbox"/> Hysterectomy <input type="checkbox"/> Mifepristone (RU 486) <input type="checkbox"/> Other (specify) _____ <input type="checkbox"/> Dilation Extraction <input type="checkbox"/> Methotrexate <input type="checkbox"/> Other (specify) _____			
21. Medical condition of the woman at the time of abortion: <input type="checkbox"/> Good <input type="checkbox"/> Other (specify) _____		22. Type of procedure done immediately after the abortion: <input type="checkbox"/> None <input type="checkbox"/> Other (specify) _____	
23. Post Abortion Complications (Indicate all): <input type="checkbox"/> None <input type="checkbox"/> Hemorrhage <input type="checkbox"/> Perforation of Uterus <input type="checkbox"/> Cervical Laceration <input type="checkbox"/> Infection <input type="checkbox"/> Anesthetic <input type="checkbox"/> Failed Abortion <input type="checkbox"/> Incomplete Abortion <input type="checkbox"/> Hematometra <input type="checkbox"/> Death <input type="checkbox"/> Other (specify) _____		24. Type of family planning recommended: <input type="checkbox"/> Cervical Cap <input type="checkbox"/> Hormone Implant <input type="checkbox"/> Condom (male) <input type="checkbox"/> Oral Contraceptive <input type="checkbox"/> Depo Provera <input type="checkbox"/> Condom (female) <input type="checkbox"/> Diaphragm <input type="checkbox"/> Hormone Patch <input type="checkbox"/> IUD <input type="checkbox"/> Vaginal Ring <input type="checkbox"/> Other (specify) _____	
25. Type of Counseling given: <input type="checkbox"/> None <input type="checkbox"/> Psychological <input type="checkbox"/> Social Service <input type="checkbox"/> Pastoral <input type="checkbox"/> Medical <input type="checkbox"/> Other (specify) _____			
26. Physician's Name (Type or print)		27. Physician's Signature: Date:	

Medical Information for Abortions Performed, Induced or Attempted after 19 Completed Weeks of Gestation
(Required pursuant to R. C. 2919.171 and O.A.C. 370-47-03)

Woman's Identification number:		<i>For State Use Only</i>	
Please respond to questions 30a-d and 31a-b ONLY if you responded "yes" to question 29a.			
28a. Did you perform a medical examination of the pregnant woman within 48 hours before the performance of the abortion or the attempt to perform or induce the abortion? <input type="checkbox"/> Yes <input type="checkbox"/> No		28b. Date of medical examination: M M D D Y Y ____/____/____	
29a. In your good faith judgment, was the unborn child viable as defined in ORC 2919.16, paragraph M? <input type="checkbox"/> Yes <input type="checkbox"/> No		29b. Type of testing performed to determine viability: <div style="display: flex; justify-content: space-between;"> <div style="width: 48%;"> <input type="checkbox"/> Ultrasound <input type="checkbox"/> Lung Maturity Testing <input type="checkbox"/> Genetic Testing <input type="checkbox"/> Amniocentesis <input type="checkbox"/> Other _____ </div> <div style="width: 48%;"> <input type="checkbox"/> Chorionic Villus Sampling <input type="checkbox"/> Cordocentesis <input type="checkbox"/> Weight (Ultrasound Estimate) <input type="checkbox"/> Maternal Serum Alpha-Fetoprotein (MSAFP) </div> </div>	
30a. The abortion was induced, performed or attempted because of a medical necessity or medical emergency (i.e. to prevent the death of the pregnant woman or a serious risk of the substantial and irreversible impairment of a major bodily function of the pregnant woman): <input type="checkbox"/> Yes <input type="checkbox"/> No			
30b. Please have the physician, who is not professionally related to the attending physician, certify the information in Question #30a. by printing and signing their name: By signing below, I certify that I am not professionally related to the attending physician and that the abortion was induced, performed or attempted because of a medical necessity or medical emergency (i.e. to prevent the death of the pregnant woman or a serious risk of the substantial and irreversible impairment of a major bodily function of the pregnant woman). Print Name _____ Signature _____ M.D./ D.O.			
30c. Medical condition of the pregnant woman that constitutes medical necessity or medical emergency: <div style="display: flex; justify-content: space-between;"> <div style="width: 48%;"> <input type="checkbox"/> Diabetes <input type="checkbox"/> Multiple Sclerosis <input type="checkbox"/> Hemorrhage <input type="checkbox"/> Respiratory Failure <input type="checkbox"/> Preeclampsia (Toxemia) <input type="checkbox"/> Eclampsia <input type="checkbox"/> Inevitable Abortion </div> <div style="width: 48%;"> <input type="checkbox"/> Acute Fatty Liver of Pregnancy <input type="checkbox"/> Infection <input type="checkbox"/> Premature Rupture of the Membrane <input type="checkbox"/> Cardiac Disease <input type="checkbox"/> Other _____ </div> </div>		30d. Method or techniques considered when inducing or performing the abortion (check all that apply): <div style="display: flex; justify-content: space-between;"> <div style="width: 48%;"> <input type="checkbox"/> Suction Dilation & Curettage <input type="checkbox"/> Dilation Extraction (specify) _____ <input type="checkbox"/> Hysterectomy <input type="checkbox"/> Other (specify) _____ </div> <div style="width: 48%;"> <input type="checkbox"/> Dilation & Evacuation (D&E) <input type="checkbox"/> Hysterectomy <input type="checkbox"/> Medical (NonSurgical) <input type="checkbox"/> Mifepristone (RU 486) <input type="checkbox"/> Methotrexate <input type="checkbox"/> Other (specify) _____ </div> </div>	
31a. Method or technique employed when inducing or performing the abortion: <div style="display: flex; justify-content: space-between;"> <div style="width: 48%;"> <input type="checkbox"/> Suction Dilation & Curettage <input type="checkbox"/> Dilation Extraction (specify) _____ <input type="checkbox"/> Hysterectomy <input type="checkbox"/> Other (specify) _____ </div> <div style="width: 48%;"> <input type="checkbox"/> Dilation & Evacuation (D&E) <input type="checkbox"/> Hysterectomy <input type="checkbox"/> Medical (NonSurgical) <input type="checkbox"/> Mifepristone (RU 486) <input type="checkbox"/> Methotrexate <input type="checkbox"/> Other (specify) _____ </div> </div>		31b. Reason for choice of method or technique: <div style="display: flex; justify-content: space-between;"> <div style="width: 48%;"> <input type="checkbox"/> Gestational Age <input type="checkbox"/> Patient Safety <input type="checkbox"/> Patient Choice </div> <div style="width: 48%;"> <input type="checkbox"/> Availability of Services <input type="checkbox"/> Other (specify) _____ </div> </div>	

_____ By initialing I certify that the abortion was not based on a claim or diagnosis that the pregnant woman will engage in conduct that would result in the pregnant woman's death or a substantial and irreversible impairment of a major bodily function of the pregnant woman or on any reason related to the woman's mental health.

A physician who fails to submit the report described in Paragraph (A) of OAC 3701-47-03 more than thirty days after the fifteen-day deadline, shall be subject to a late fee of five hundred dollars for each additional thirty-day period or portion of a thirty-day period the report is overdue.

(Required Pursuant to O.A.C. 3701-47-03)

State Use Only

3. Date of Abortion: Month Day Year
_____ / _____ / _____

4. Weeks of Gestation: _____

5B. Address of Facility:	Street or Post Number	City	State	Zip
--------------------------	-----------------------	------	-------	-----

6. Date Post Abortion Care Begin: Month Day Year
 _____/_____/_____

7. Patient Number
 ___/___/___/___/___/___/___/___/___/___/___/___/___/___/___/___

☐ Hemorrhage ☐ Anesthetic ☐ Hematometra ☐ Perforation of Uterus
☐ Failure of Amniotic Fluid Ex ☐ RH Incompatibility ☐ Cervical Laceration ☐ Failed Abortion
☐ Infection ☐ Incomplete Abortion ☐ Death ☐ Other (Specify) _____

9. Duration of treatment: (Indicate number of hours or days)

_____ Hours _____ Days

[illegible]

11A. Physician's Name providing care (Type or print)	11.B Physicians Signature:	M.D.	Date:
		D.O.	

HEA 1806 Rev. 4/96



Ohio

Department of Health

John R. Kasich, Governor

Theodore E. Wymyslo, M.D. Director, Ohio Department of Health