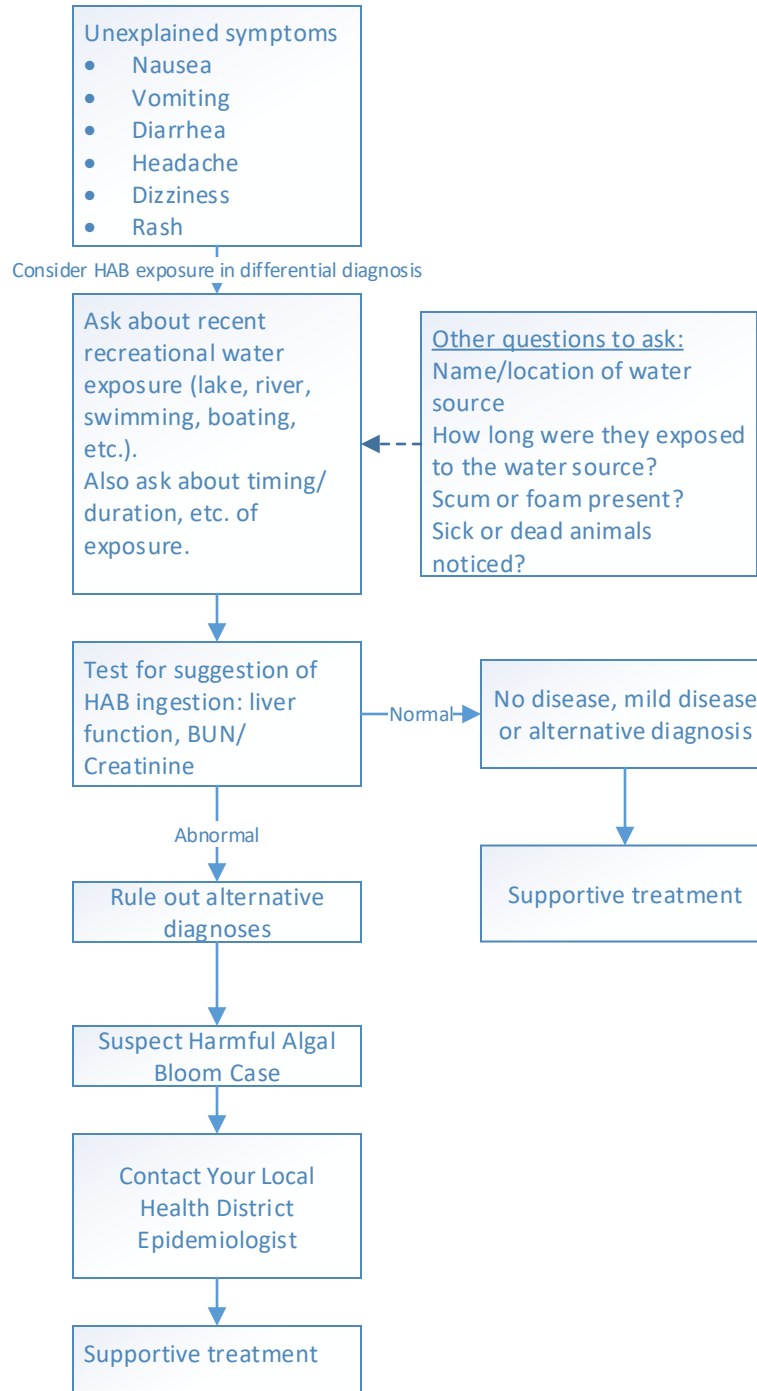


A Provider-Based Approach to a patient with criteria for possible Harmful Algal Bloom Exposure

State Public Health Assessment Process



Definition	Criteria for Harmful Algal Bloom Diagnosis								
	Human HAB-associated Case	Exposure ¹	Signs/Symptoms ²	Public health assessment ³	Professional Medical Diagnosis ⁴	Alternative diagnoses excluded	Observational or environmental data ⁵	Laboratory based HAB data ⁶	Clinical Data ⁷
1. Suspect	Required	Required	Required						
2. Probable	Required	Required	Required			Required to have 1			
3. Probable	Required	Required	Required	Required	+/-	+/-	+/-		
4. Confirmed	Required	Required	Required	Required to have 1		+/-	+/-	Required	
5. Confirmed	Required	Required	Required	Required	Required		Required		

Notes:

¹ Exposure (i.e. physical contact, inhalation, ingestion) to water, algae, or seafood, dietary supplements

² Self-reported signs/symptoms after exposure

³ State public health assessment is defined as the action of compiling all data available and deciding that the illness in question is likely HAB-related

⁴ Professional medical diagnosis being provided by a medical professional based on medical assessment

⁵ Observation of scum, algae, water color change, sheen, photographic evidence, satellite data or environmental data (e.g., pH, chlorophyll, nutrient levels)

⁶ Laboratory detection of cyanobacteria or other potentially toxin-producing algae

⁷ Laboratory documentation of cyanobacteria, other potentially toxin-producing algae, or algal/cyanobacterial toxins in a clinical specimen

Blue shaded cells: you must have at least one of the criteria described in the shaded cell.

+/-: indicates that this criteria is optional and while it strengthens the case, but it does not change case classification (e.g., suspect to probable, probable to confirmed).



Bureau of Environmental Health and Radiation Protection
614-466-1390