

2024 Active Living Program Summary



**Department of
Health**



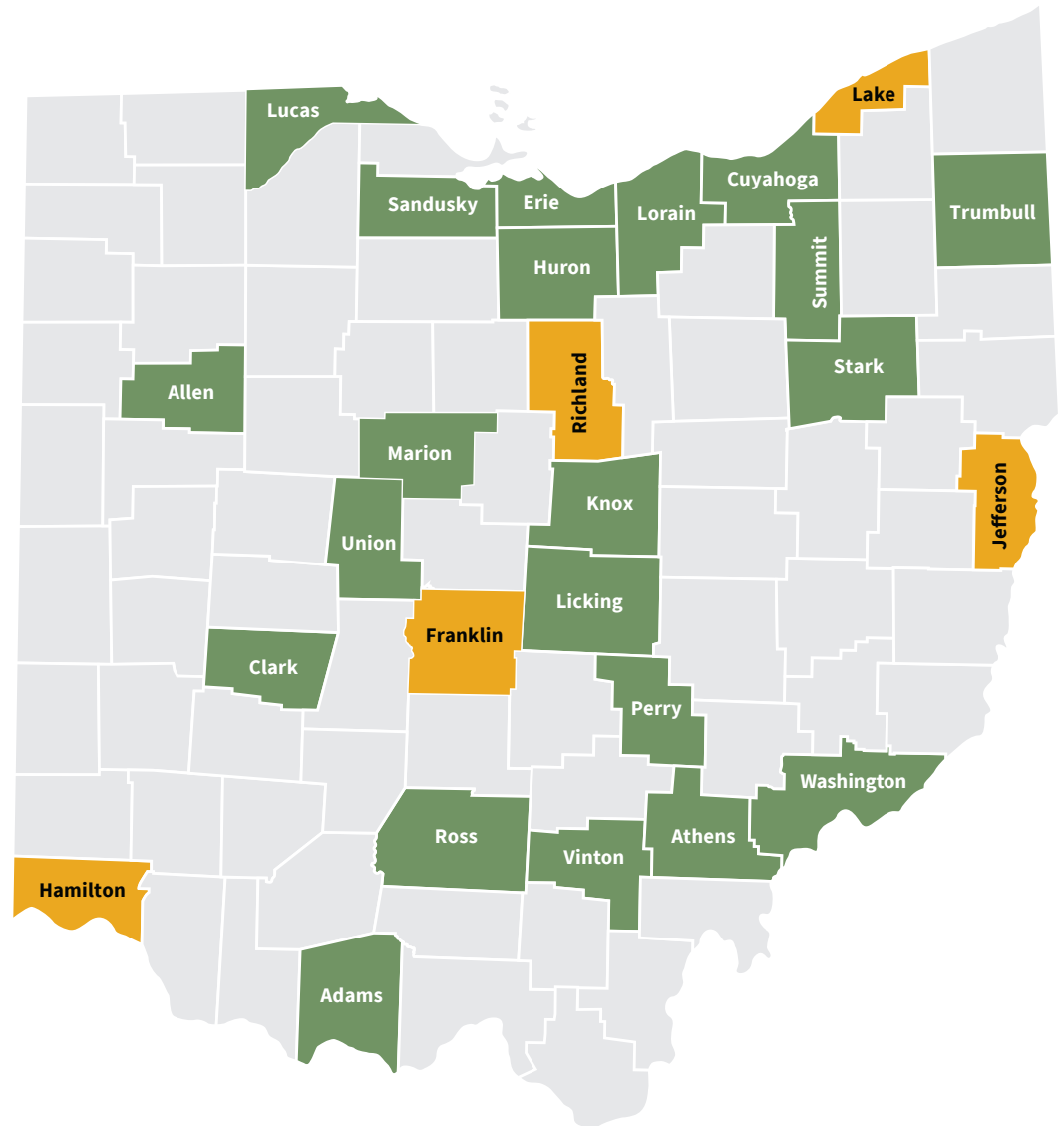
Introduction

The Ohio Department of Health's (ODH) Creating Healthy Communities (CHC) and Healthy Eating and Active Living (HEAL) programs promote policy, systems, and environmental changes that increase opportunities for healthy eating and physical activity throughout Ohio. Funding comes from the Centers for Disease Control and Prevention's (CDC) Preventive Health and Health Services Block Grant and the State Physical Activity and Nutrition (SPAN) Grant.

ODH supports Ohio counties through these two competitive grant processes to implement healthy eating and active living strategies. ODH contracts with Toole Design to provide technical assistance and develop resources to support the work of communities funded through these programs, specifically those addressing physical activity and active transportation.

This document summarizes the activities and outcomes provided by Toole Design from October 2023 through September 2024. This was the final year of a five-year competitive CHC grant cycle, and the second year that the HEAL program was available to communities. Toole Design continued to support local health departments with a range of personalized technical assistance and trainings. Key successes and outcomes are highlighted in this report.

Funded Communities for Active Living Strategies Grant Year 2024



- County funded by Creating Healthy Communities grant.
- County funded by Healthy Eating and Active Living grant.

Technical Assistance Topics

Between October 2023 and September 2024, Toole Design assisted CHC coordinators and HEAL project leads nearly 200 times. Assistance ranged from emails and calls to answer specific questions, to leading workshops and providing detailed memos to help advance local goals. The topics that Toole Design most commonly advised on were active transportation planning, pedestrian infrastructure, Safe Routes to School, and bike infrastructure. In addition, Toole Design provided more in-depth technical assistance to 14 communities in the form of workshops, memos, mapping services, cost opinions, and professional development bike rides.



Active Transportation Planning

Toole Design assisted communities in various stages of active transportation planning, from those just getting started to those who were ready to update older plans.

- In Hamilton and Vinton counties, Toole helped lead stakeholder workshops to develop potential recommendations to include in active transportation and pedestrian plans.
- In Athens and Union counties, CHC coordinators took the lead in developing local plans, with Toole Design providing supplementary assistance including assisting with stakeholder engagement, developing maps, and giving feedback on plan documents. Both communities successfully finalized and adopted their plans.
- Perry County's plan, initially developed in 2019, was ready for a five-year update. Toole Design assisted in bringing stakeholders together to discuss updates and priorities for infrastructure projects. Lorain County also updated the City of Lorian's Active Transportation Plan with separate funding outside the grant.



Engagement in Athens County

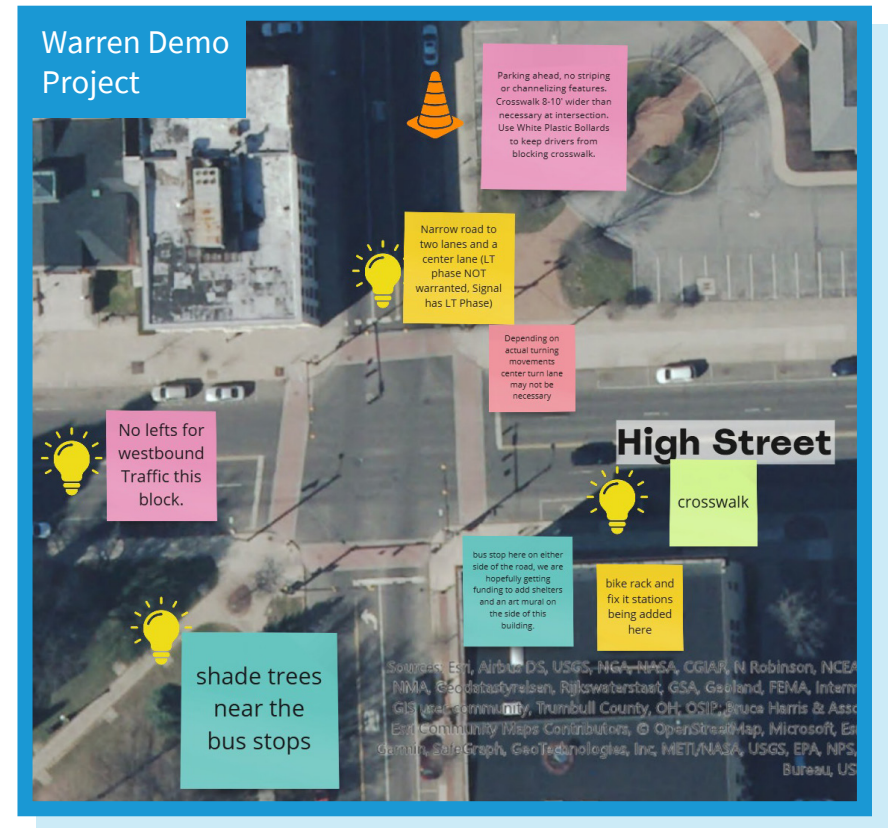


Perry County Workshop

Bicycle and Pedestrian Infrastructure and Multi-Use Trails

Several communities worked to implement bicycle and pedestrian infrastructure that had been identified through previous planning work.

- In Trumbull County, Toole Design hosted an interactive online workshop to help plan for a demonstration project in the works for the City of Warren. Demonstration projects are short-term, low-cost, temporary roadway projects used to give the community an opportunity to experience new design features.
- Summit County and the City of Akron are working to implement a new multiuse trail, phase by phase. Toole Design provided research on potential funding opportunities for the trail, and used a program called Streetlight Insights to gather baseline data on bicycle and pedestrian activity in the areas around the trail.
- The Villages of Centerburg and Gambier in Knox County were facing challenges with speeding vehicles in key areas of the community. Toole Design developed initial recommendations for traffic calming measures that could be implemented in each unique scenario.
- In a previous year, HEAL grantee Jefferson County began to develop plans for a “Heritage Trail” around the City of Steubenville. Toole Design conducted public engagement to gather feedback from the community on what they hoped to see for that trail and how it could reflect everyone’s heritage.
- Following the successful adoption of their Active Transportation Plan, Athens County knew that State Route 13 was one of the most important corridors connecting the community, but it would need significant design changes to make it more conducive to active transportation. Toole Design provided a set of maps which the community could use to begin conversations on where they should start.



Other topics

Toole Design provided in-depth assistance in a variety of other topic areas.

- Franklin County helped coordinate a School Safety Day that included information on safe walking and biking practices. In support of the effort, Toole Design provided a variety of potential lesson plans, resources, and marketing materials to get the word out.
- The City of Painesville in Lake County has a small park in need of additional enhancements and features to enhance access and belonging. Toole Design developed a short memo with a variety of suggestions for features to consider, as well as potential funding sources to pursue.
- In Richland County, in support of a recent switch to fixed route transit service, there was a need to develop new bus stops and signage. Toole Design provided a memo advising on best practices for bus stop signage and stop design and reviewed the County's draft guidelines to provide additional context on accessibility requirements under the Americans with Disabilities Acts (ADA) and new Public Rights-of-Way Accessibility Guidelines (PROWAG).



Professional Development Rides

Each year, Toole Design offers Professional Development rides – guided bike rides that are opportunities for decision makers and professionals working in the active transportation field to experience bicycling in their community.

- In Adams County, Toole Design led a ride in coordination with the launch of a brand new bikeshare program to ensure program staff could best support patrons of the system.
- In Fremont (Sandusky County), the ride was an opportunity to relaunch efforts to pass a Complete Streets policy in the city and to experience in person some of the major barriers to biking.
- In Steubenville (Jefferson County), the ride brought together local leaders to think about how to progress bicycle and pedestrian infrastructure as well as how to promote and support the Heritage Trail.



Fremont Professional Development Ride

“Hearing the positives that we already have in place was great to learn. It makes creating change less daunting.”

– Steubenville Professional Development Ride Participant

“The ride was a great experience, and I learned several things I was not aware that need attention. So overall, was a great experience.”

– Fremont Professional Development Ride Participant

Featured Projects

City of Lorain, Lorain County



Source: City of Lorain

Incorporating artistic interventions on roadways, pedestrian spaces, and other urban infrastructure has many benefits, including creating a stronger sense of place and reorienting perceptions around what streets can be used for. They may even help lower vehicle speeds. The City of Lorain created a temporary pavement mural in Spring 2024 at Pearl Ave. and E. 31st St. in the heart of South Lorain. The mural, titled “We All Walk Together”, was created in partnership with the City of Lorain, FireFish, El Centro, Horizon Science Academy, NOACA, and Lorain Connected and Lorain residents. It reflects the diversity and cultures of South Lorain and Lorain as seen through the eyes of the young students who live in the neighborhood.

Featured Projects (cont.)

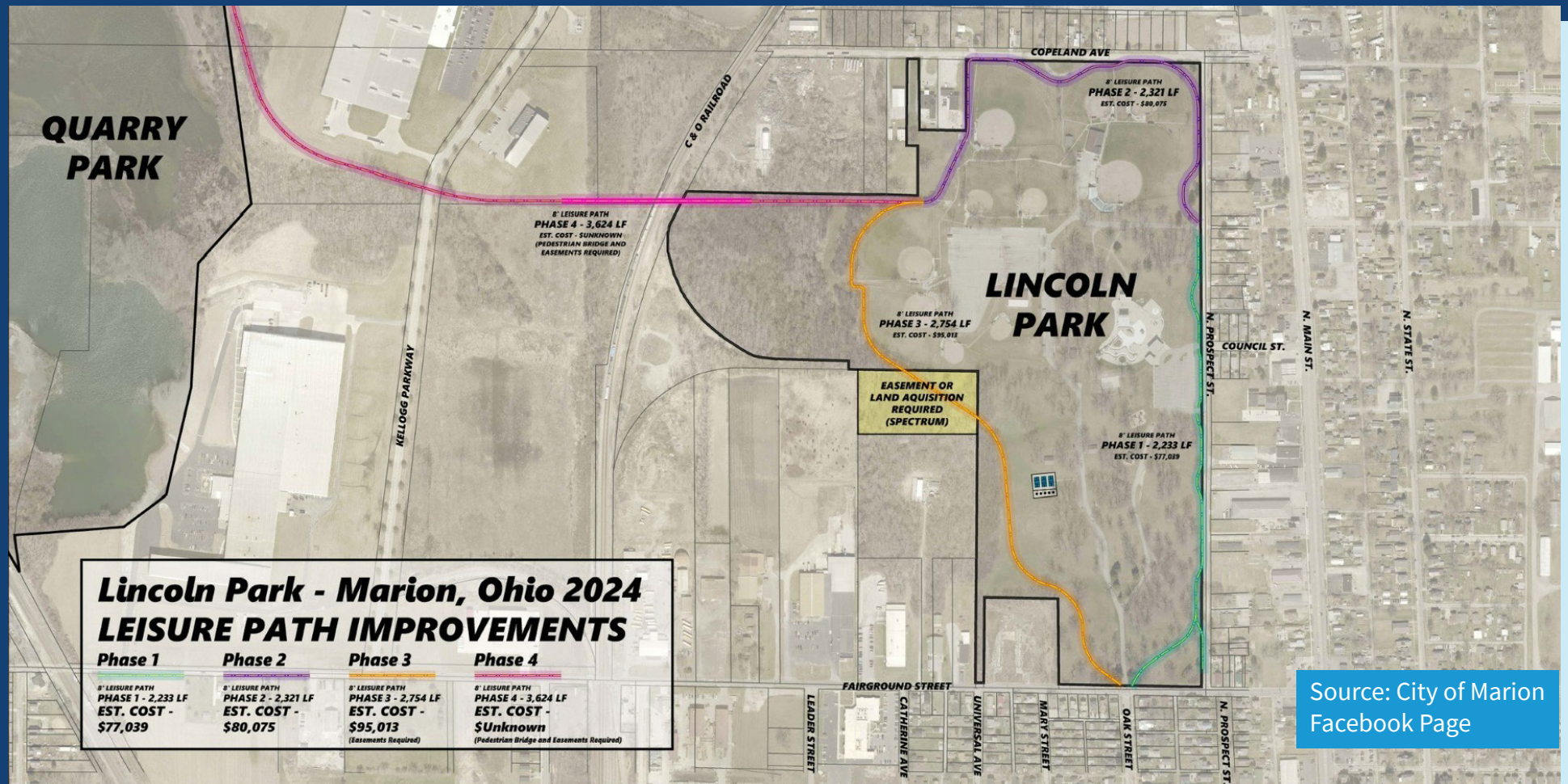
Village of Amesville, Athens County



The Village of Amesville, a community of 171 people, had concerns about speeding traffic creating unsafe conditions for people walking and biking on local roads. After identifying asphalt art as a potential solution for the challenge, the village collaborated with the Creating Healthy Communities Program to quickly plan and execute an asphalt art installation at the intersections of four village streets. Volunteers in the community are conducting ongoing monitoring of speeds to measure the impacts of the project.

Featured Projects (cont.)

City of Marion, Marion County



The City of Marion has been working on creating sidewalks and walking paths around Lincoln Park. The city obtained funding in partnership with the Regional Planning Agency, and construction of the first phase began in October 2024. The first phase provides connections from the Oak Street and North Prospect Street entrances to the Aquatic Center; phases 2 and 3 will complete a full loop around the park. A potential fourth future phase is also envisioned that could connect to another park, Quarry Park, to the west.

Program Impacts - FY 2024

During the five years of the CHC grant cycle, there has been the potential to have significant impact on the more than five million residents within the CHC communities, and the entire state of Ohio. During this time, Toole Design tracked performance metrics to understand the reach of the program and the impact of the resources provided. These include the total population reached, additional funding leveraged by CHC coordinators, plans and policies adopted, and awards and recognition received by CHC communities. While Toole Design did not contribute to every success, their technical assistance supplemented CHC coordinators' capacity to achieve these accomplishments.

Estimated total population reach:

- 25 Counties (CHC + select HEAL).
- 6.7 Million Ohioans.

Estimated funding leveraged (2023):

- \$0.7 Million for Parks and Playgrounds.
- \$26.4 Million for Active Transportation.

Policies and plans adopted:

- 3 Active Transportation Plans (Marietta, Lorain, Adams County).
- 2 School Travel Plans (Sandusky, Oregon).
- 5 Complete Streets Policies (New Straitsville, Clyde, Crooksville, Reynoldsburg, Toledo).

17+ Media coverage examples (local news articles).

- [Sandusky County - YMCA, Sandusky County Public Health launch Bike Share.](#)
- [Washington County - Pedestrians Safer Thanks to Grant.](#)
- [Washington County - Improved beacons installed at seven Marietta crosswalks.](#)
- [Ross County - Patrick Park Set for Inaugural Opening this Month in Chillicothe.](#)
- [Allen County - Allen County Youth Bike and Pedestrian Task Force Held Free Lesson on Bicycle Repair Basics.](#)
- [Adams County - Collaboration is key, R. B. Ellison Park in Peebles gets a facelift.](#)
- [Sandusky County - YMCA, health department join to offer bike sharing program.](#)



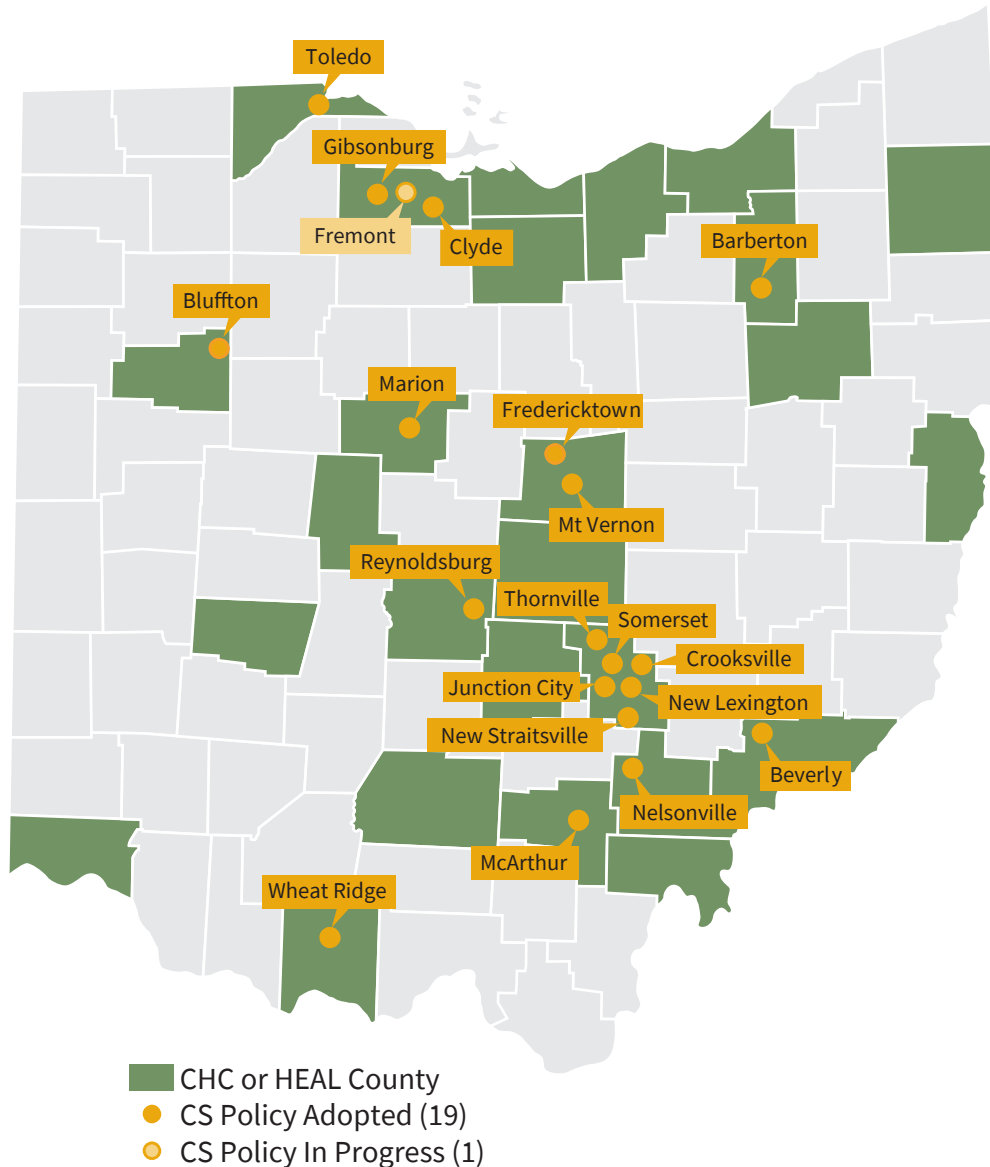
SPAN Cumulative Outcomes

October 2018 - September 2024

ODH has received funding from the State Physical Activity and Nutrition (SPAN) grant since October 2018. This section tracks the cumulative achievements directly relating to the goals of that program over the course of the grant.

Complete Streets Policies

Map of policies adopted/in progress as of September 2024



Adopted (19)

- Barberton.
- Beverly.
- Bluffton.
- Clyde.
- Crooksville.
- Fredericktown.
- Gibsonburg.
- Junction City.
- Marion.
- McArthur.
- Mount Vernon.
- Nelsonville.
- New Lexington.
- New Straitsville.
- Somerset.
- Thornville.
- Wheat Ridge.
- Reynoldsburg.
- Toledo.

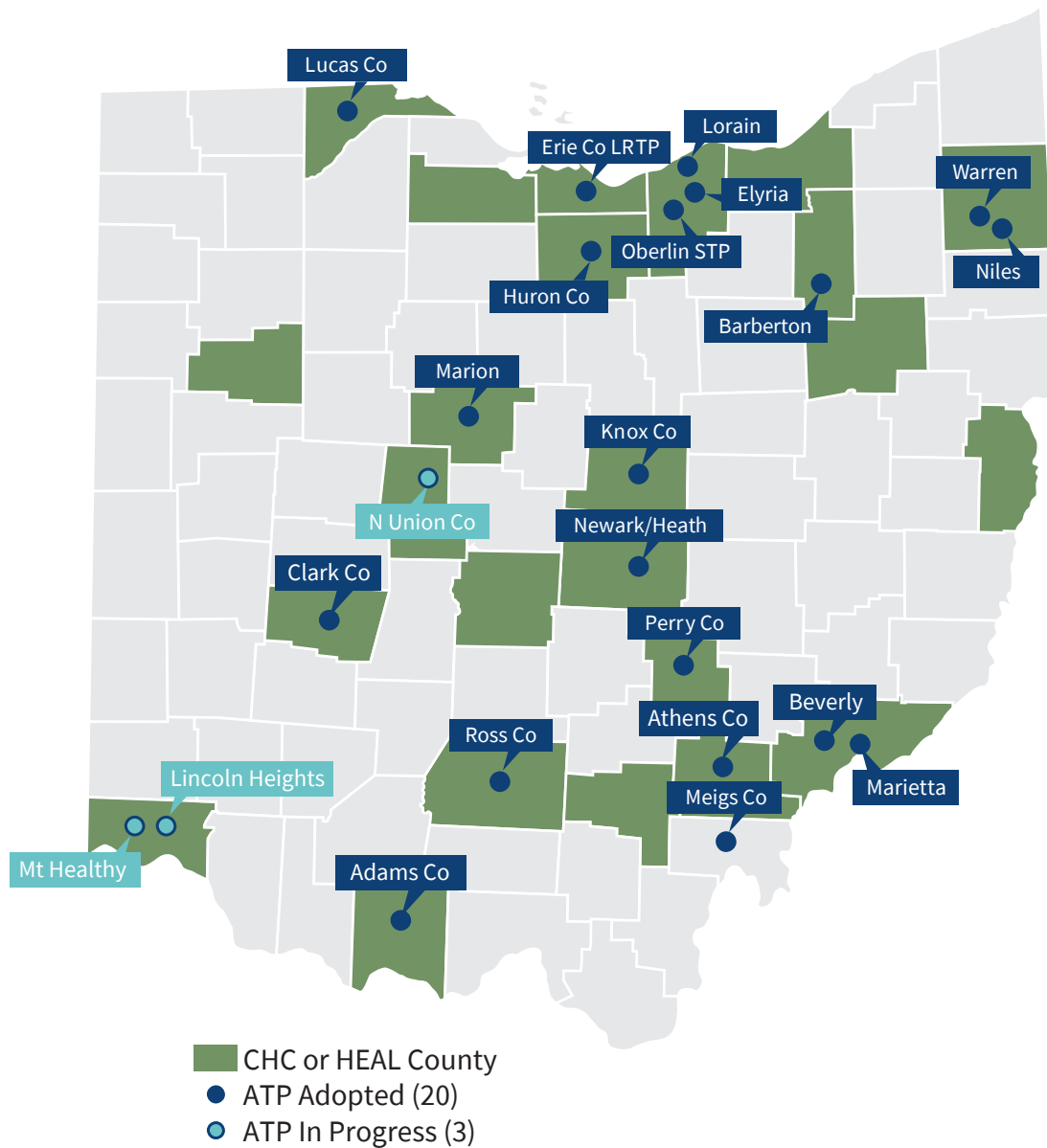
In progress (1)

- Fremont.

SPAN Cumulative Outcomes (cont.)

Active Transportation Planning

Map of plans adopted/in progress as of September 2024



Adopted (20)

- Adams County.
- Athens County.
- Barberton.
- Beverly.
- Chillicothe / Ross County.
- Clark County.
- Elyria.
- Erie County.
- Huron County.
- Knox County.
- Lorain (Update).
- Lucas County.
- Marietta.
- Marion.
- Meigs County.
- Newark-Heath.
- Niles.
- Oberlin.
- Perry County.
- Warren.

In progress (3)

- Lincoln Heights.
- Mt Healthy.
- N. Union Co.



Department of
Health

For more information:

odh.ohio.gov

Prepared by:

T'OOLE
DESIGN