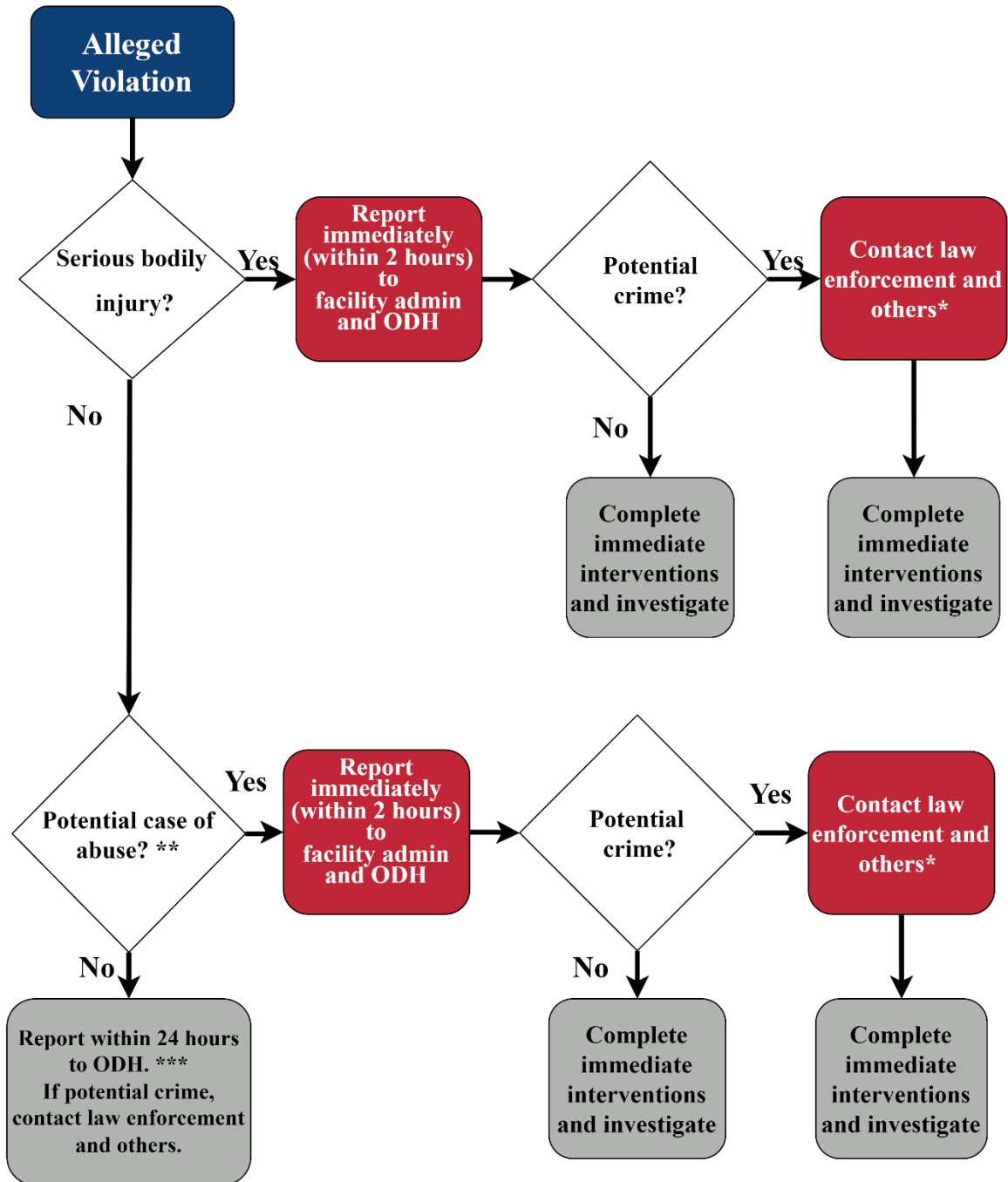


Initial Reporting Timeline for Self-Reported Incidents



* Others may include ombudsman, APS, nurse aid registry, professional licensing boards, etc.

** Abuse: Physical, sexual, mental/verbal, deliberate deprivation of goods and services.

*** This may include cases of non-deliberate neglect and misappropriation of property that didn't cause mental anguish to resident.