

**FAST FACTS**

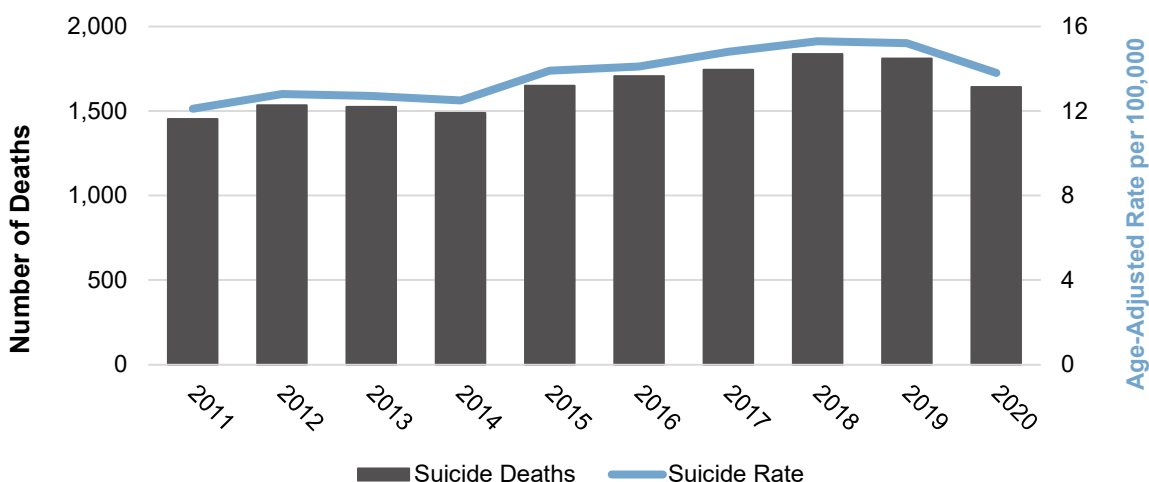
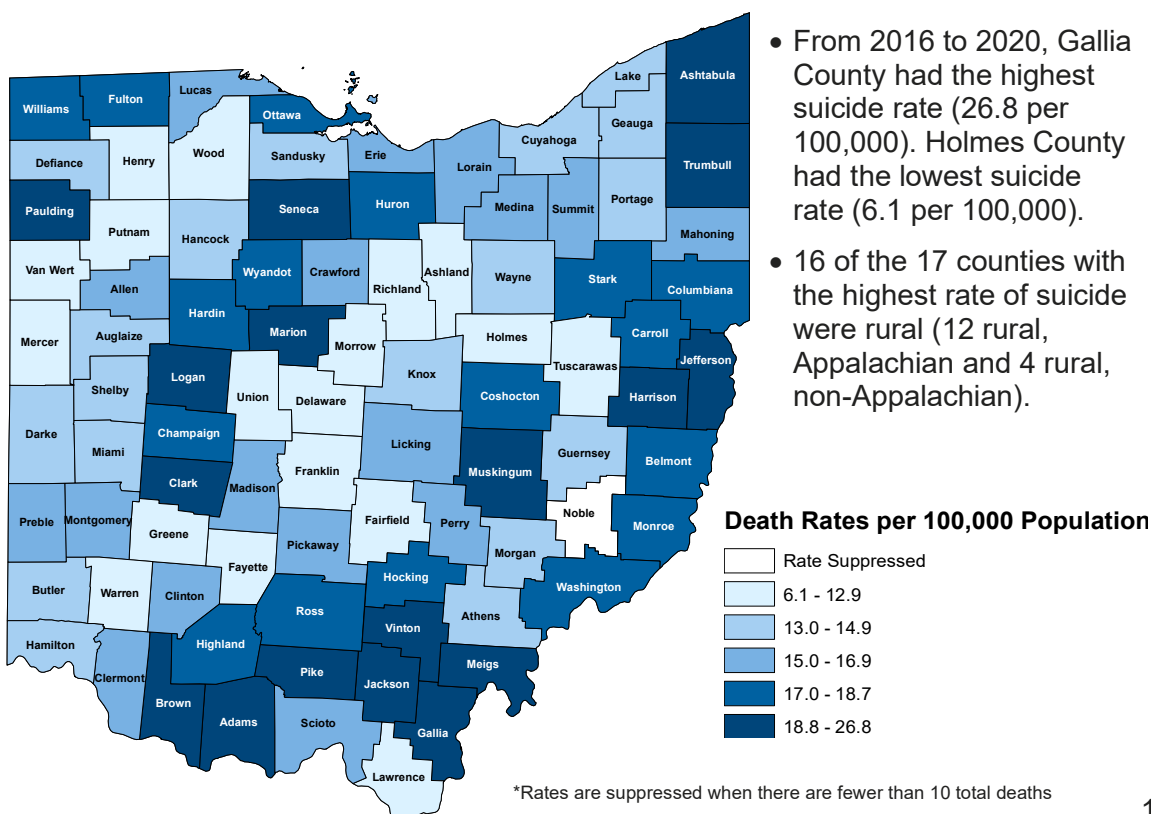
- In 2020, 1,642 Ohioans died by suicide, the lowest number of overall suicide deaths since 2014.
- From 2019 to 2020, the rate of suicide increased among Black non-Hispanic males and females and decreased among white non-Hispanic males and females.
- In 2020, adults 25-44 years of age had the highest rate of suicide, followed by adults 45-64 years of age.
- Among males in 2020, those 75 years and older had the highest rate of suicide.
- Among females in 2020, those between 45-54 years old had the highest number and rate of suicide.
- In 2020, suicide by drug overdose was four times more common among females compared with males.

**RESOURCES**

- Crisis Text Line  
Text 4HOPE to 741741

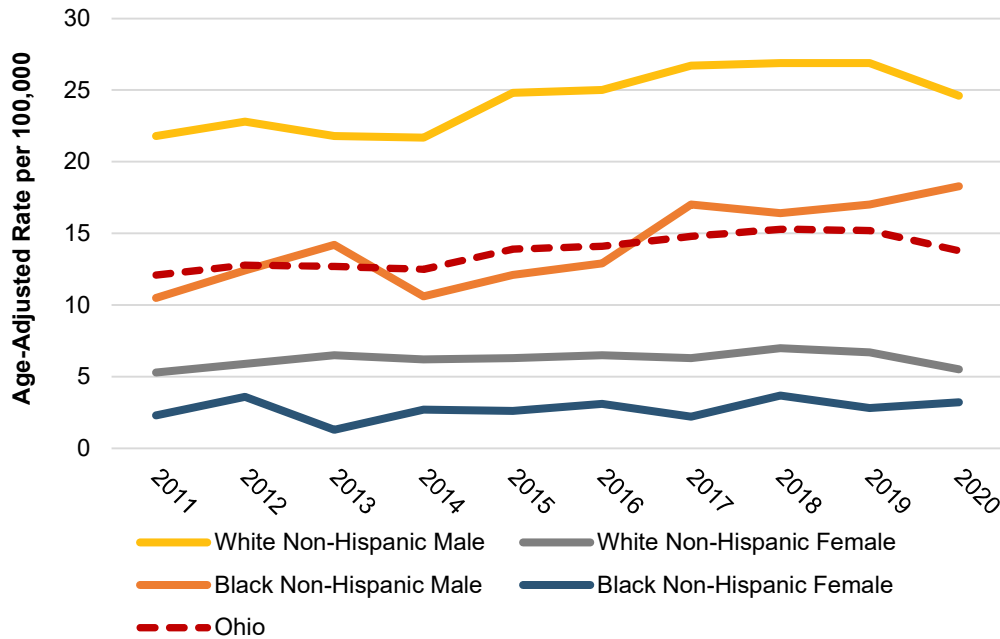
**Suicide in Ohio**

- In 2020, suicide was the 2<sup>nd</sup> leading cause of death among Ohioans 10-14 years of age, the 3<sup>rd</sup> leading cause among Ohioans 15-34 years of age, and the 14<sup>th</sup> leading cause of death in Ohio overall.
- While there was a 13% increase in the number of suicide deaths from 2011 to 2020, from 2019 to 2020, the number and rate of suicide deaths decreased 9%.

**Figure 1. Number and Age-Adjusted Rate of Suicide Deaths by Year, Ohio, 2011–2020****Figure 2. Average Age-Adjusted Rate of Suicide Deaths by County of Residence, Ohio, 2016–2020**

## Trends by Demographic

**Figure 3. Age-Adjusted Rate of Suicide Deaths by Race/Ethnicity and Sex, Ohio, 2011–2020**



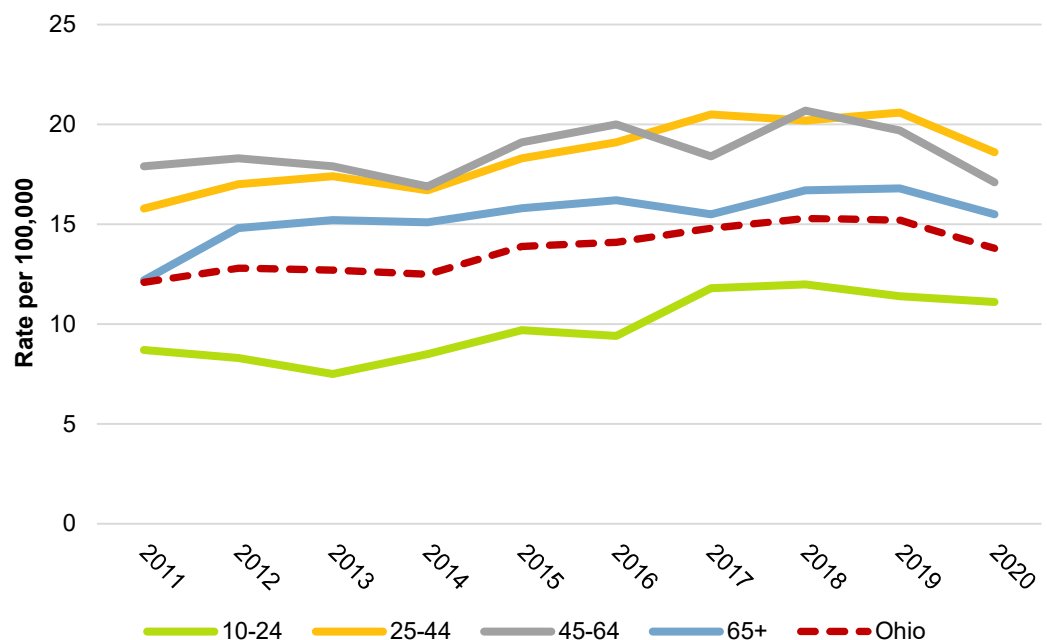
- From 2011 to 2020, white non-Hispanic males had the highest rates of suicide death.
- From 2019 to 2020, the rate of suicide:
  - decreased 9% for white non-Hispanic males (26.9 to 24.6 per 100,000).
  - increased 8% for Black non-Hispanic males (17.0 to 18.3 per 100,000).
  - decreased 18% for white non-Hispanic females (6.7 to 5.5 per 100,000).
  - increased 14% for Black non-Hispanic females (2.8 to 3.2 per 100,000).

\*Race/ethnicity categories are mutually exclusive. Specified race (white, Black) excludes Hispanic ethnicity. Other race/ethnicity groups not shown due to small numbers.

**Four Ohioans die by suicide every day.  
One youth (10-24 years) dies by suicide every 35 hours.**

- In 2020, adults 25-44 years of age had the highest rate of suicide death, followed by adults 45-64 years.
- From 2019 to 2020, the rate of:
  - youth suicide (10-24 years) decreased 3% (11.4 to 11.1 per 100,000).
  - adult suicide among 25-44 year olds decreased 10% (20.6 to 18.6 per 100,000) and among 45-64 year olds decreased 13% (19.7 to 17.1 per 100,000).
  - older adult suicide (65+ years) decreased 8% (16.8 to 15.5 per 100,000).

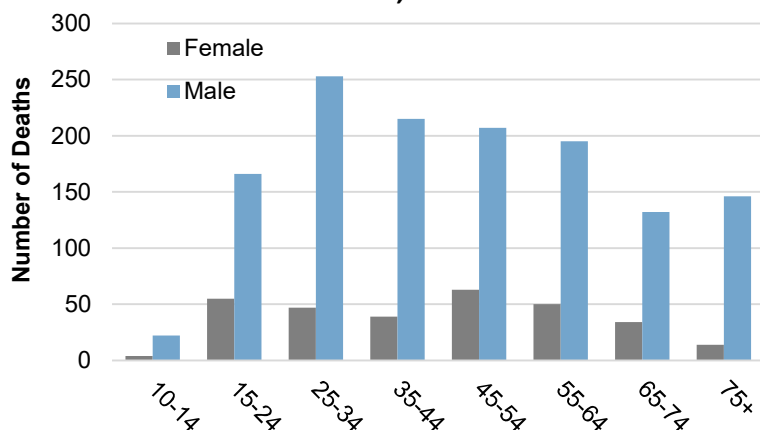
**Figure 4. Rate of Suicide Deaths by Age Group, Ohio, 2011–2020**



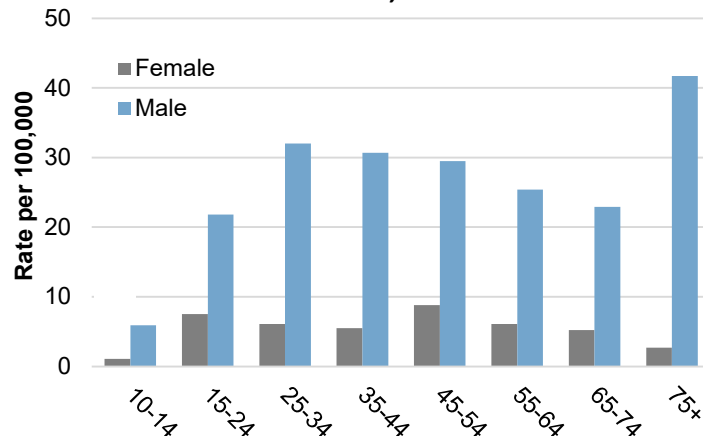
## Age and Sex

- In 2020, females made up 19% (306) of suicide deaths while males made up 81% (1,336).
- Among males, those aged 25-34 years had the highest number of suicide deaths (253). Those aged 75 years and older had the highest rate of suicide deaths (41.7 per 100,000).
- Among females, those aged 45-54 years had the highest number and rate of suicide deaths.

**Figure 5. Number of Suicide Deaths by Age and Sex, Ohio, 2020**



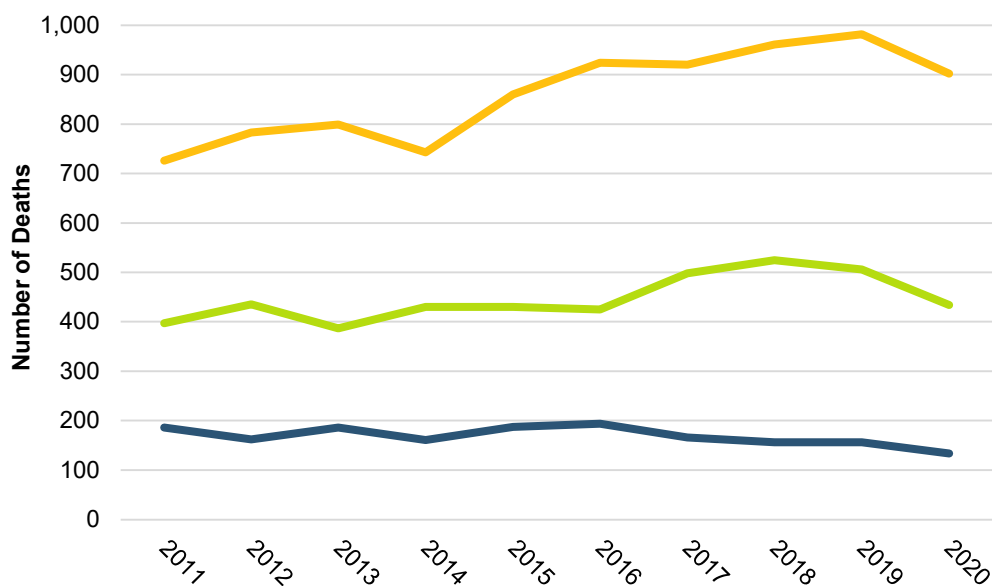
**Figure 6. Rate of Suicide Deaths by Age and Sex, Ohio, 2020**



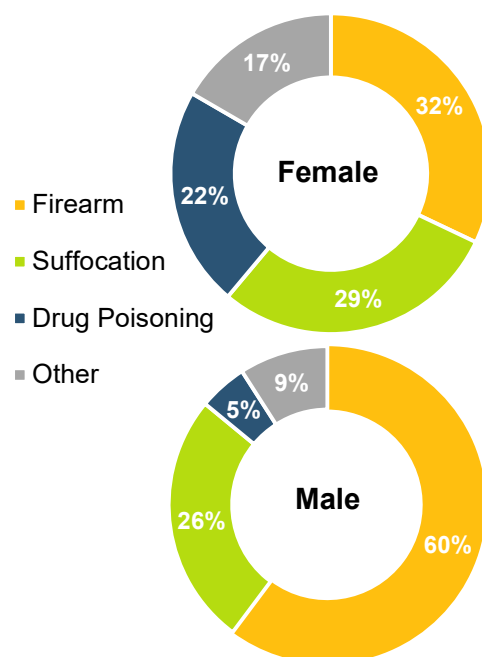
## Mechanism

- From 2019 to 2020, the number of suicide deaths by suffocation (e.g., hanging) decreased 14% (from 506 to 434), suicide by firearm decreased 8% (from 982 to 902), and suicide by drug poisoning decreased 14% (from 156 to 134).
- In 2020, firearms were the leading mechanism of suicide among both females and males; accounting for 32% of female and 60% of male suicide deaths respectively. Suicide by drug overdose accounted for 22% of female suicide deaths compared with 5% of male suicide deaths.

**Figure 7. Number of Suicide Deaths by Mechanism, Ohio, 2011–2020**



**Figure 8. Percentage of Suicide Deaths by Mechanism and Sex, Ohio, 2020**



## 2011–2020 Demographic Summary

**Table 1. Number of Suicide Deaths by Year and Demographic Characteristic, Ohio, 2011–2020**

Demographics	2011	2012	2013	2014	2015	2016	2017	2018	2019	2020	
	Number	Number	Number	Number	Number	Number	Number	Number	Number	Number	Rate <sup>1</sup>
<b>Age</b>											
5-9	0	0	1	0	0	0	2	0	1	0	—
10-14	9	18	14	25	14	17	25	28	31	26	3.6
15-24	197	177	161	172	210	198	244	243	224	221	14.8
25-34	228	233	244	221	258	302	296	295	305	300	19.2
35-44	225	254	256	258	269	251	301	297	304	254	18.0
45-54	334	324	316	295	335	305	308	298	303	270	19.0
55-64	243	263	253	242	271	327	268	342	297	245	15.4
65-74	101	122	137	148	146	160	146	174	181	166	13.5
75+	100	131	129	124	145	146	154	159	163	160	18.5
<b>Sex</b>											
Female	291	318	336	325	339	365	328	387	352	306	5.1
Male	1,146	1,204	1,175	1,160	1,309	1,341	1,416	1,449	1,457	1,336	23.0
<b>Race/Ethnicity</b>											
American Indian/Alaskan Native Non-Hispanic	1	2	1	1	2	3	0	1	2	3	—
Asian/Pacific Islander Non-Hispanic	14	8	16	26	18	26	27	17	23	19	5.8
Black Non-Hispanic	87	109	107	95	103	118	138	150	148	159	10.3
White Non-Hispanic	1,320	1,381	1,364	1,338	1,494	1,533	1,546	1,632	1,588	1,421	14.8
Hispanic	13	19	18	22	22	23	27	31	40	35	8.0
<b>Race/Ethnicity and Sex</b>											
Black Non-Hispanic Female	17	26	11	21	20	24	17	31	23	26	3.2
Black Non-Hispanic Male	70	83	96	74	83	94	121	119	125	133	18.3
White Non-Hispanic Female	269	287	321	292	305	329	297	346	317	264	5.5
White Non-Hispanic Male	1,051	1,094	1,043	1,046	1,189	1,204	1,249	1,286	1,271	1,157	24.6
Hispanic Female	2	4	3	3	8	2	5	6	7	9	—
Hispanic Male	11	15	15	19	14	21	22	25	33	26	12.4
<b>Total</b>	<b>1,451</b>	<b>1,534</b>	<b>1,524</b>	<b>1,488</b>	<b>1,648</b>	<b>1,706</b>	<b>1,744</b>	<b>1,836</b>	<b>1,809</b>	<b>1,642</b>	<b>13.8</b>

Source: ODH Bureau of Vital Statistics. Analysis: ODH Violence and Injury Epidemiology and Surveillance Section. Analysis includes Ohio residents with any of the following ICD-10 codes as the underlying cause of death: X60-X84, Y87.0, \*U03. Due to missing demographic information, demographic categories may not sum to total.

Race/ethnicity categories are mutually exclusive. Hispanic includes any race. Specified race (Black, white, etc.) excludes Hispanic ethnicity.

<sup>1</sup>Rates presented for age groups are age-specific. Rates presented for sex and race/ethnicity are age-adjusted to the 2000 U.S. standard population. Rates are calculated per 100,000 population and suppressed when counts <10.

**Table 2. Number and Age-Adjusted Rate of Suicide Deaths by County, Ohio, 2016–2020**

County	2016	2017	2018	2019	2020		2016–2020	
	Number	Number	Number	Number	Number	Rate <sup>1</sup>	Number	Rate <sup>1</sup>
<b>Ohio</b>	<b>1,706</b>	<b>1,744</b>	<b>1,836</b>	<b>1,809</b>	<b>1,642</b>	<b>13.8</b>	<b>8,737</b>	<b>14.6</b>
Adams	4	5	9	8	3	—	29	21.3
Allen	15	13	12	10	30	28.7	80	15.4
Ashland	6	8	8	3	9	—	34	12.0
Ashtabula	19	27	22	16	16	15.4	100	19.5
Athens	10	6	7	11	7	—	41	13.7
Auglaize	6	11	3	4	6	—	30	14.3
Belmont	10	13	17	10	12	16.6	62	17.3
Brown	11	8	10	7	7	—	43	19.7
Butler	48	52	50	53	42	10.8	245	13.3
Carroll	6	6	3	4	6	—	25	17.7
Champaign	7	7	6	10	5	—	35	18.1
Clark	20	25	29	26	34	26.4	134	20.1
Clermont	30	29	34	43	31	14.5	167	15.8
Clinton	4	6	8	8	4	—	30	15.3
Columbiana	16	17	18	21	17	17.0	89	17.5
Coshocton	6	2	7	10	12	24.6	37	18.3
Crawford	9	5	5	15	4	—	38	15.9
Cuyahoga	165	157	188	186	171	13.2	867	13.4
Darke	10	4	10	5	9	—	38	14.0
Defiance	6	9	5	5	1	—	26	14.0
Delaware	24	21	19	27	25	12.2	116	11.2
Erie	18	12	9	14	7	—	60	15.7
Fairfield	18	20	21	22	18	11.1	99	12.6
Fayette	4	2	2	2	1	—	11	7.8
Franklin	141	165	177	153	143	10.9	779	11.7
Fulton	6	5	15	5	5	—	36	17.9
Gallia	5	8	10	10	6	—	39	26.8
Geauga	14	13	19	12	16	16.4	74	14.1
Greene	20	22	27	19	21	12.9	109	12.5
Guernsey	3	6	7	6	8	—	30	14.1
Hamilton	107	112	105	110	101	12.6	535	13.1
Hancock	4	11	13	14	13	17.0	55	14.5
Hardin	5	5	2	9	5	—	26	17.5
Harrison	5	2	0	1	5	—	13	19.5
Henry	3	2	3	4	4	—	16	11.7
Highland	11	5	6	7	8	—	37	17.3

**Table 2. Number and Age-Adjusted Rate of Suicide Deaths by County, Ohio, 2016–2020**

County	2016	2017	2018	2019	2020		2016-2020	
	Number	Number	Number	Number	Number	Rate <sup>1</sup>	Number	Rate <sup>1</sup>
<b>Ohio</b>	<b>1,706</b>	<b>1,744</b>	<b>1,836</b>	<b>1,809</b>	<b>1,642</b>	<b>13.8</b>	<b>8,737</b>	<b>14.6</b>
Hocking	5	6	6	5	5	—	27	18.0
Holmes	3	2	2	1	4	—	12	6.1
Huron	9	9	11	14	8	—	51	18.2
Jackson	4	11	8	12	6	—	41	24.8
Jefferson	13	10	15	16	10	13.6	64	19.2
Knox	12	9	10	10	6	—	47	14.9
Lake	32	37	34	43	38	16.2	184	14.5
Lawrence	9	6	12	3	9	—	39	12.0
Licking	29	32	25	31	29	16.3	146	16.2
Logan	5	9	12	9	8	—	43	19.6
Lorain	46	61	52	51	44	13.8	254	16.1
Lucas	62	71	64	73	65	15.1	335	15.5
Madison	5	10	6	7	9	—	37	15.9
Mahoning	39	36	38	37	33	13.4	183	15.1
Marion	14	10	10	18	11	16.2	63	19.4
Medina	31	28	25	31	25	14.5	140	15.4
Meigs	7	6	9	4	1	—	27	22.9
Mercer	6	4	5	1	4	—	20	9.5
Miami	13	14	21	12	15	14.5	75	13.9
Monroe	3	1	2	4	4	—	14	18.0
Montgomery	88	78	79	91	82	14.6	418	15.3
Morgan	3	1	4	3	1	—	12	14.4
Morrow	4	1	6	2	7	—	20	12.5
Muskingum	18	14	25	17	10	13.7	84	19.9
Noble	3	1	3	1	0	—	8	—
Ottawa	4	8	11	11	4	—	38	18.7
Paulding	4	7	4	4	4	—	23	25.5
Perry	5	6	4	4	9	—	28	16.2
Pickaway	9	14	7	10	9	—	49	15.6
Pike	5	9	9	5	3	—	31	23.9
Portage	29	16	31	23	26	16.5	125	14.8
Preble	8	3	8	7	6	—	32	15.6
Putnam	5	5	2	3	4	—	19	11.8
Richland	17	16	21	11	18	13.3	83	12.9
Ross	15	15	18	10	14	17.9	72	18.0
Sandusky	7	11	9	8	6	—	41	14.5

**Table 2. Number and Age-Adjusted Rate of Suicide Deaths by County, Ohio, 2016–2020**

County	2016	2017	2018	2019	2020		2016-2020	
	Number	Number	Number	Number	Number	Rate <sup>1</sup>	Number	Rate <sup>1</sup>
<b>Ohio</b>	<b>1,706</b>	<b>1,744</b>	<b>1,836</b>	<b>1,809</b>	<b>1,642</b>	<b>13.8</b>	<b>8,737</b>	<b>14.6</b>
Scioto	11	10	21	13	7	—	62	16.9
Seneca	10	10	12	14	8	—	54	19.2
Shelby	1	6	11	7	8	—	33	13.8
Stark	81	70	71	73	53	14.1	348	18.6
Summit	94	96	80	90	80	14.1	440	15.9
Trumbull	41	46	35	36	38	17.6	196	19.0
Tuscarawas	10	15	13	11	16	16.6	65	12.9
Union	5	3	9	7	8	—	32	11.0
Van Wert	1	5	2	3	0	—	11	7.9
Vinton	1	3	3	4	3	—	14	20.7
Warren	31	29	26	31	26	10.2	143	12.0
Washington	9	13	6	11	12	19.5	51	17.6
Wayne	11	16	17	24	14	12.9	82	14.9
Williams	6	7	6	8	7	—	34	17.7
Wood	24	14	23	11	9	—	81	12.9
Wyandot	3	3	6	4	3	—	19	17.4

Source: ODH Bureau of Vital Statistics. Analysis: ODH Violence and Injury Epidemiology and Surveillance Section. Analysis includes Ohio residents with any of the following ICD-10 codes as the underlying cause of death: X60-X84, Y87.0, \*U03.

County data are based on county of residence.

<sup>1</sup>Rates are age-adjusted to the 2000 U.S. standard population. Rates are calculated per 100,000 population and suppressed when counts <10.