

# OHIO

## 2005



## Induced Abortions in Ohio

Ohio Department of Health

Bob Taft, Governor

J. Nick Baird, M.D., Director of Health

*An equal opportunity employer/provider*

# **Induced Abortions in Ohio, 2005**

**Prepared by:**

**Statistical Analysis Unit  
Center for Vital and Health Statistics**

**John Paulson  
Supervisor**

**Donna L. Smith  
Researcher**

**September, 2006**

**Induced Abortion Program contact Persons**

**Statistical Analysis Unit**

**Data Analysis**

**John Paulson**

**614-644-8507**

**Donna L. Smith**

**614-466-7545**

**Quality Assurance**

**Fetal Development**

**Resources Directory on request**

**Lucille Raabe, Section Chief**

**Clinical Health Care/Provider Svcs.**

**614-644-1845**

**Office of General Counsel**

**Legislation**

**Rachel Belenker**

**614-466-4882**

## TABLE OF CONTENTS

	Induced Abortion Summary	1
<b>Figure 1</b>	Resident Induced Abortions Ohio, 1976-2005	3
<b>Figure 2</b>	Selected characteristics of resident induced abortions in Ohio, 2005	4
<b>Figure 3</b>	Induced abortions reported in Ohio, by county of occurrence, 2005	5
<b>Figure 4</b>	Abortion ratio and abortion rate, by year, Ohio residents 1990-2005	6
<b>Figure 5</b>	Induced abortion rates per 1,000 women by age, Ohio residents, 2001-2005	7
<b>Figure 6</b>	Induced abortion ratio, by age group, Ohio residents, 2001 - 2005	8
<b>Figure 7</b>	Total Induced abortions by weeks of gestation, by year, 1990-2005	9
<b>Table 1</b>	Induced Abortion Summary Tables, Ohio, 2005	10
<b>Table 2</b>	Selected characteristics of induced abortions reported in Ohio, 1995-2005	11
<b>Table 3</b>	Resident induced abortions reported in Ohio, by county of residence, 1995-2005	13
<b>Table 4</b>	Resident induced abortions reported in Ohio, by county of residence and age, 2005	15
<b>Table 5a</b>	Resident induced abortions reported in Ohio, by selected counties, race, and broad age groups, 2005	17
<b>Table 5b</b>	Resident induced abortions reported in Ohio, by selected counties, race and age, 2005	21
<b>Table 6</b>	Induced abortions reported in Ohio, by county of occurrence, 1995-2005	23
<b>Table 7</b>	Induced abortions reported in Ohio, by method of termination and county of occurrence, 2005	24

<b>Table 8</b>	Total induced abortions reported in Ohio, by gestational age, 2005	25
<b>Table 9</b>	Resident induced abortions reported in Ohio, by age of women obtaining abortion and by number of prior induced abortions, 2005	26
<b>Table 10a</b>	Total induced abortions in Ohio with post abortion complications, by type of complication, 2005 (Data Source is ‘Post-Abortion Care Report for Complications’)	27
<b>Table 10b</b>	Total induced abortions in Ohio with post abortion complications, by type of complication, 2005 (Data Source is ‘Confidential Abortion Report’)	28
<b>Table 11</b>	Total induced abortions in Ohio with post abortion complications, by type of complication and gestation period, 2005 (Data Source is ‘Post Abortion Care Report for Complications’)	29
<b>Table 12</b>	Total induced abortions in Ohio with post abortion complications, by type of complication and termination method, 2005 (Data source is “Confidential Abortion Report”)	30
<b>Appendix I</b>	Confidential Abortion Report form	31
<b>Appendix II</b>	Post-Abortion Care Report for Complications form	32

## Induced Abortion Summary

### Background

Induced abortions must be reported to the Ohio Department of Health by the physician who performed the abortion, using the form “Confidential Abortion Reports.” The report includes demographic and medical history information about the woman obtaining the abortion and information about the medical procedure. These reports are used to produce statistical reports about abortions occurring in Ohio. The forms are confidential: no identifying information about women who obtain abortions is collected except the medical record number. Physicians providing post abortion care for complications are required to file a “Post Abortion Care Report for Complications.” It is not possible to link these post-abortion reports to the “Confidential Abortion Reports.” Both types of reports contain information about complications and are used to create statistical reports about post-abortion complications. This report presents information derived from both “Confidential Abortion Reports” and “Post-Abortion Care Reports for Complications” for 2005 in Ohio (reporting forms are included as Appendices I and II).

### Characteristics of Induced Abortions Reported in Ohio, 2005

Induced abortion statistics are available for Ohio dating back to 1976. In 1994 the reporting form was improved. Many trend comparisons in this summary date back to 1996. We also compare the 2004 abortions to 2005 occurrences to show more recent trend developments.

A total of 34,128 induced pregnancy terminations were reported in Ohio for 2005, including 31,210 for Ohio residents (91.5%). The number of total abortions performed in Ohio has seen a decline annually since 2000. (Figure 1)

Approximately one sixth of women who obtained abortions were under 20 years of age, with another third between the ages of 20-24 years of age (figure 2). The age distribution of women obtaining abortions has remained fairly unchanged since 1994. Approximately 84% of women who obtained an abortion were unmarried. The marital status distribution has remained constant since 1994. Fifty-eight percent of resident women who obtained abortions were White, 35% were African American, and 7% were other races or unknown. Three percent of abortions were obtained by women of Hispanic origin.

The 2005 Ohio abortion rate was 13 per 1,000 women ages 15-44 years (figure 4). The most recent comparable rate for the US was slightly higher at 16 per 1,000 women (year 2002). The 2005 Ohio abortion ratio was 209 abortions per 1,000 live births, a ratio that is also slightly lower than the 2002 US abortion ratio of 248 abortions per 1,000 live births.

In 2005, approximately 22% of women obtaining abortions in Ohio reported no prior pregnancies. Over half of all induced abortions involved pregnancies of less than 9 weeks (57%), with approximately 28% involving pregnancies of 9-12 weeks (figure 2). The proportion involving abortions of less than 9 weeks increased from 42% in 1995, while the proportion between 9 and 12 weeks declined from 40% to 28% (figure 7). There were 793 abortions involving pregnancies of 20 or more weeks, a number that increased from 712 in 1995. All reported abortions were obtained in eight major metropolitan areas of Ohio. 34,069 abortions were provided in licensed ambulatory surgical facilities, and 59 were provided in hospitals (less than 1%).

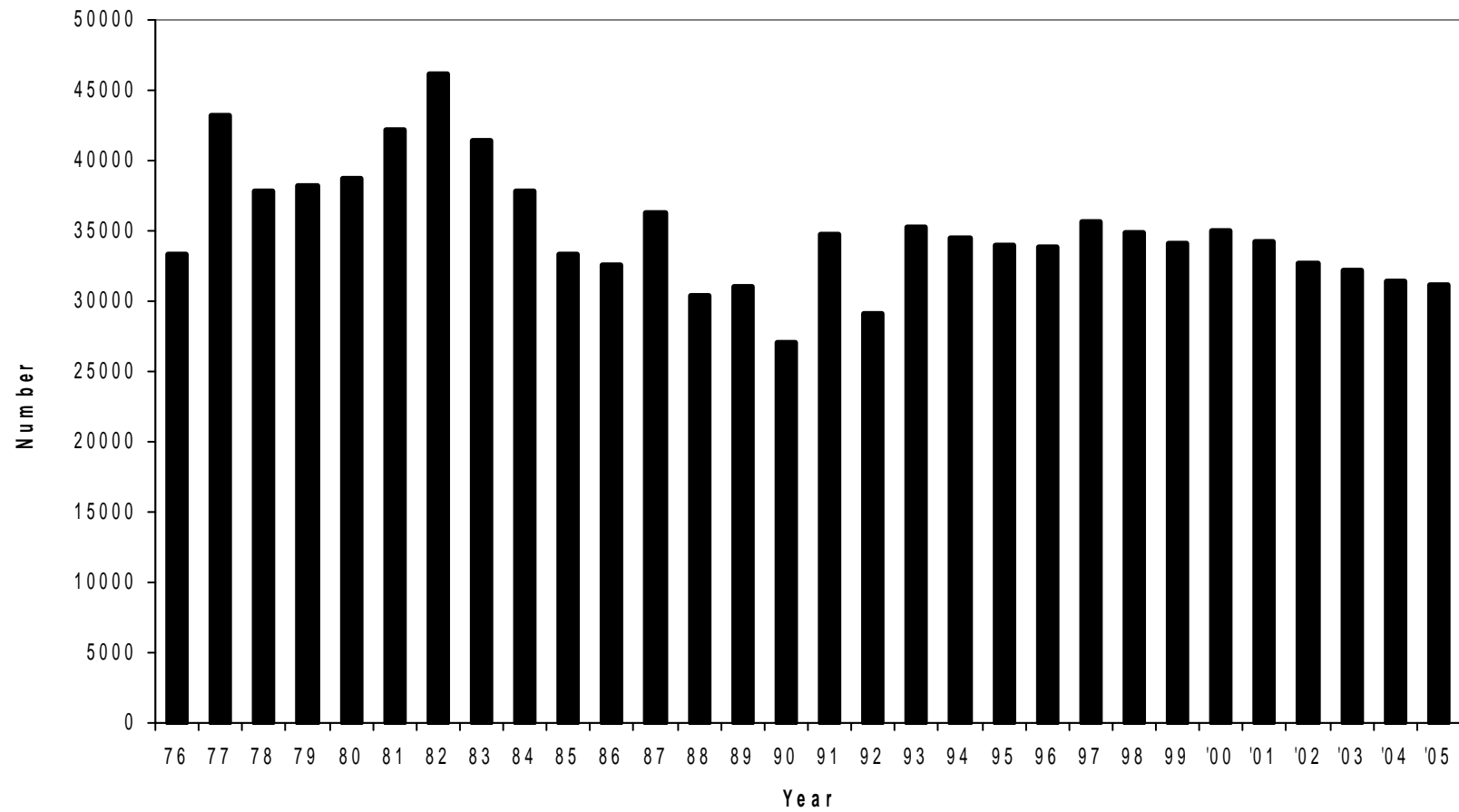
There were changes between 2002 and 2005 in method of termination for induced abortions performed in Ohio. Suction curettage remained the most frequent method of termination at 75% in 2005. That method has decreased steadily since 2000, when 92% of terminations were by suction curettage. Medical/non-surgical procedures are the second most common method (14%). Dilation and evacuation was the third most common method (8%).

Specific details about medical/non-surgical procedures have not been keyed from Ohio abortion reports, which makes it difficult to tabulate the specific procedures used in Ohio. We did, however, examine a sample of these reports in 2004 and the majority of these medical/surgical procedures were methotrexate and misoprostol administration. The medical procedures used most commonly in early abortions nationally are methotrexate with misoprostol and mifepristone with misoprostol (Goldberg AM, Greenberg MB, Darney PD. Drug therapy: miosprostol and pregnancy. N Engl J Med 2001;344:38-47). The FDA approved mifepristone for medical abortions in 2000. That approval was expected to shift many of the early abortions from surgical to non-surgical methods.

Reported post-abortion complications were rare, averaging approximately 2 per 1,000 procedures. Sixty complications were reported on the "Confidential Abortion Reports". The most common types of abortion complications were cervical laceration and infections.

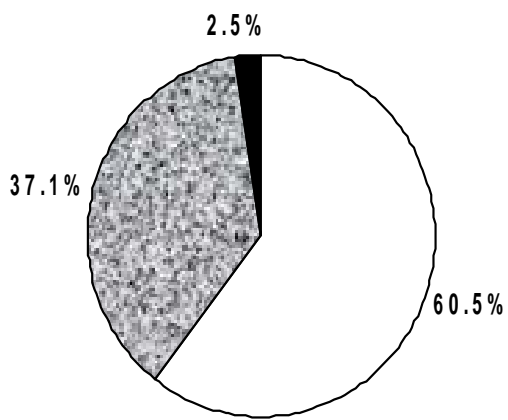
County of residence for women obtaining abortions is reported in tables 3, 4, 5a, and 5b. In accordance with Ohio Department of Health disclosure limitation policies, some counties were removed from tables 5a and 5b. The removed counties had fewer than 25 female residents in the reported age/race categories.

**Figure 1. Resident induced abortions, Ohio, 1976 - 2005**

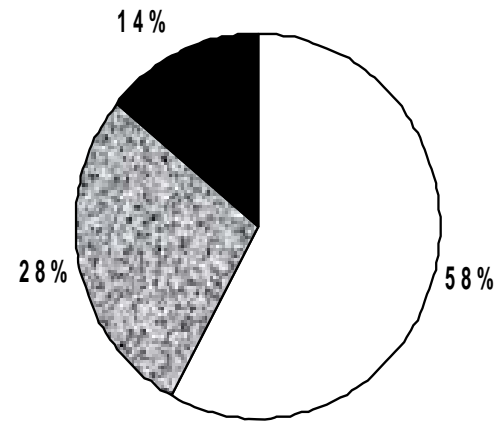
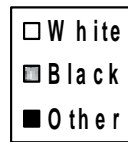




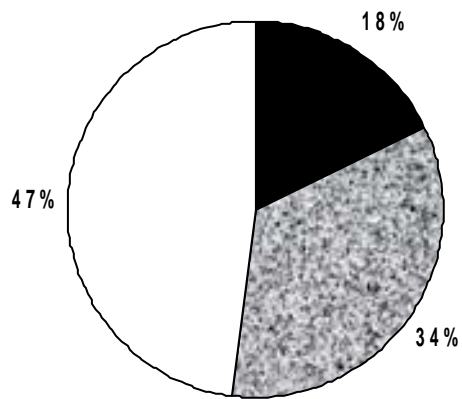
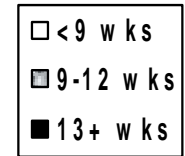
# Figure 2. Selected characteristics of resident induced abortions in Ohio, 2005



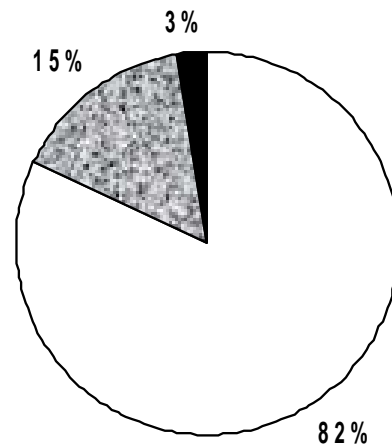
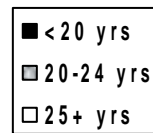
**Race**



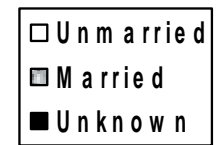
**Gestation**



**Age**

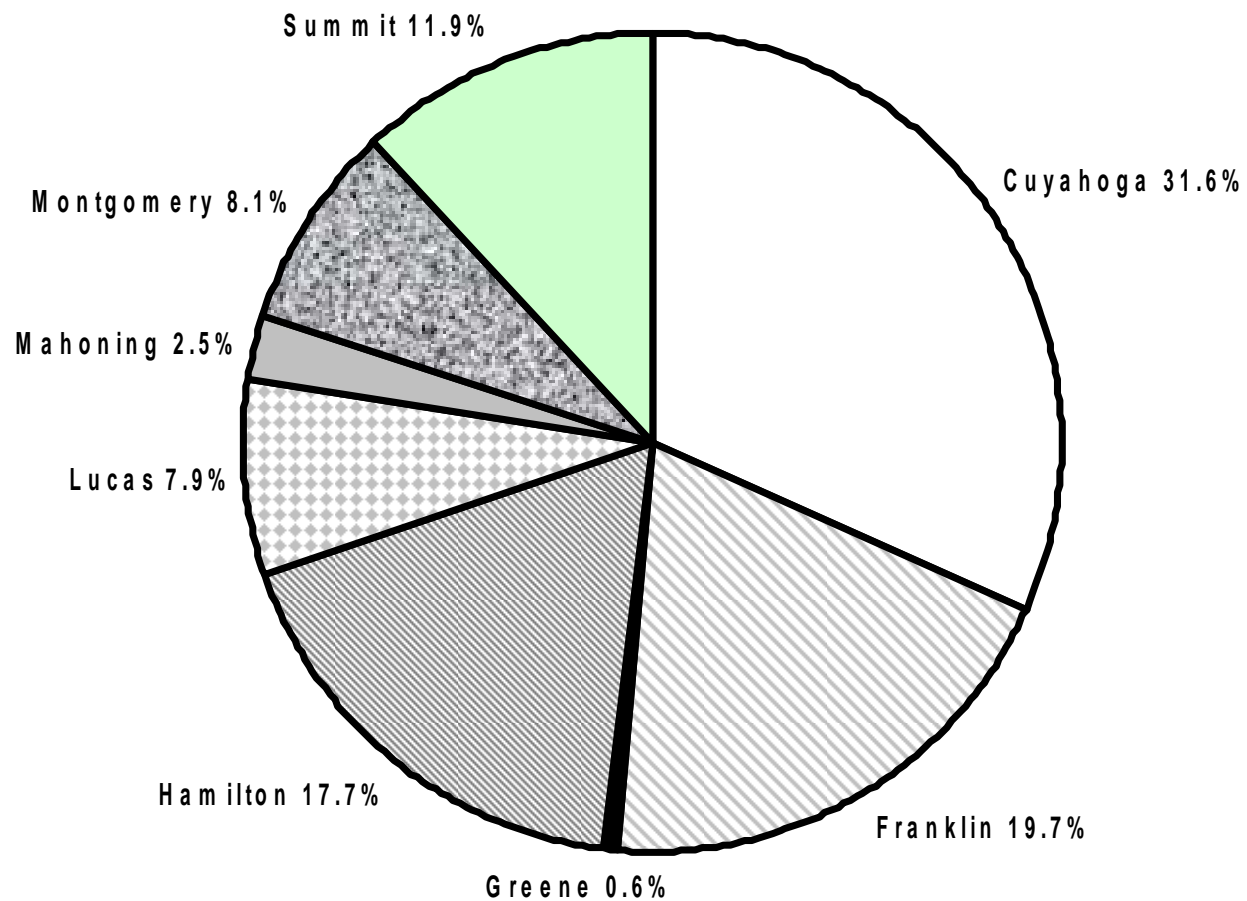


**Marital Status**

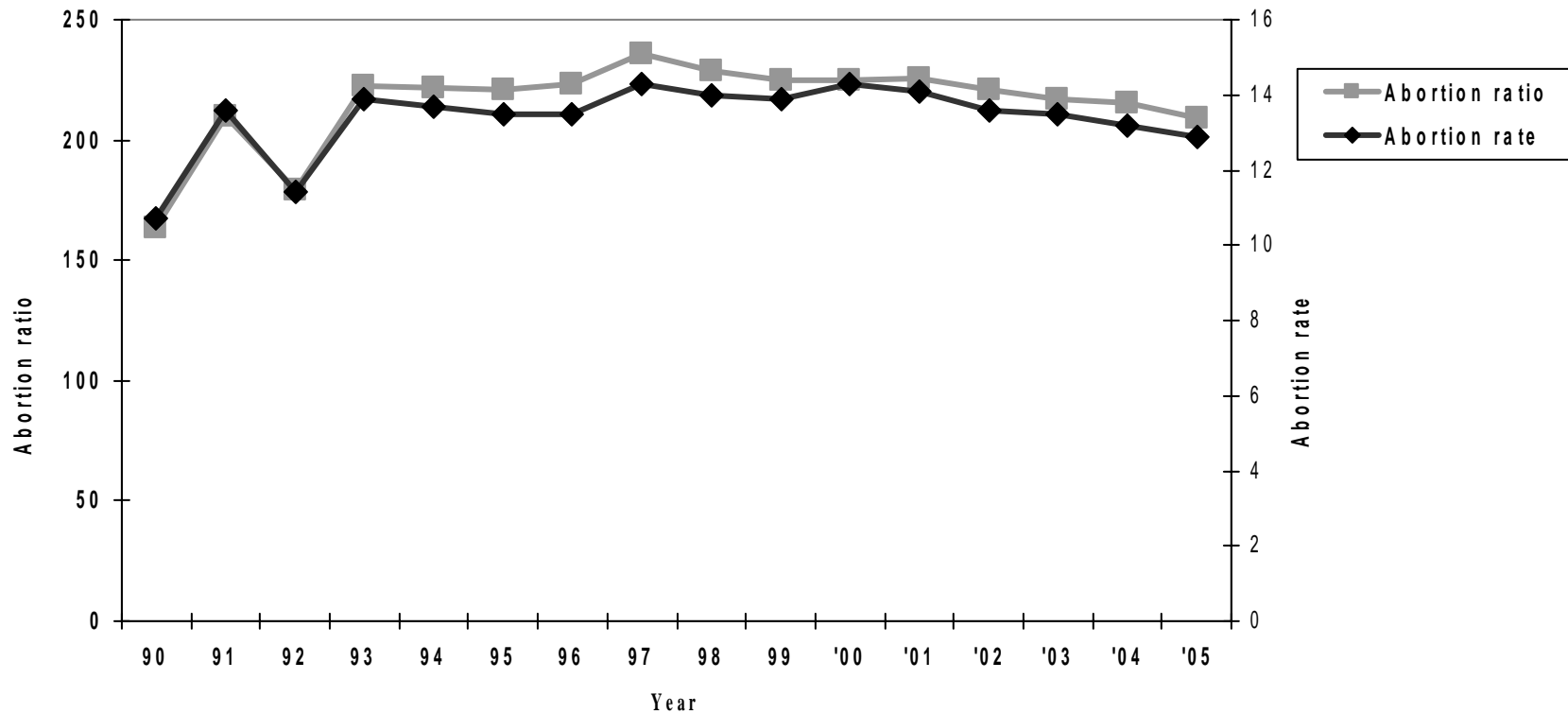


Excludes Unknown unless otherwise stated

**Figure 3. Induced abortions reported in Ohio, by county of occurrence, 2005**

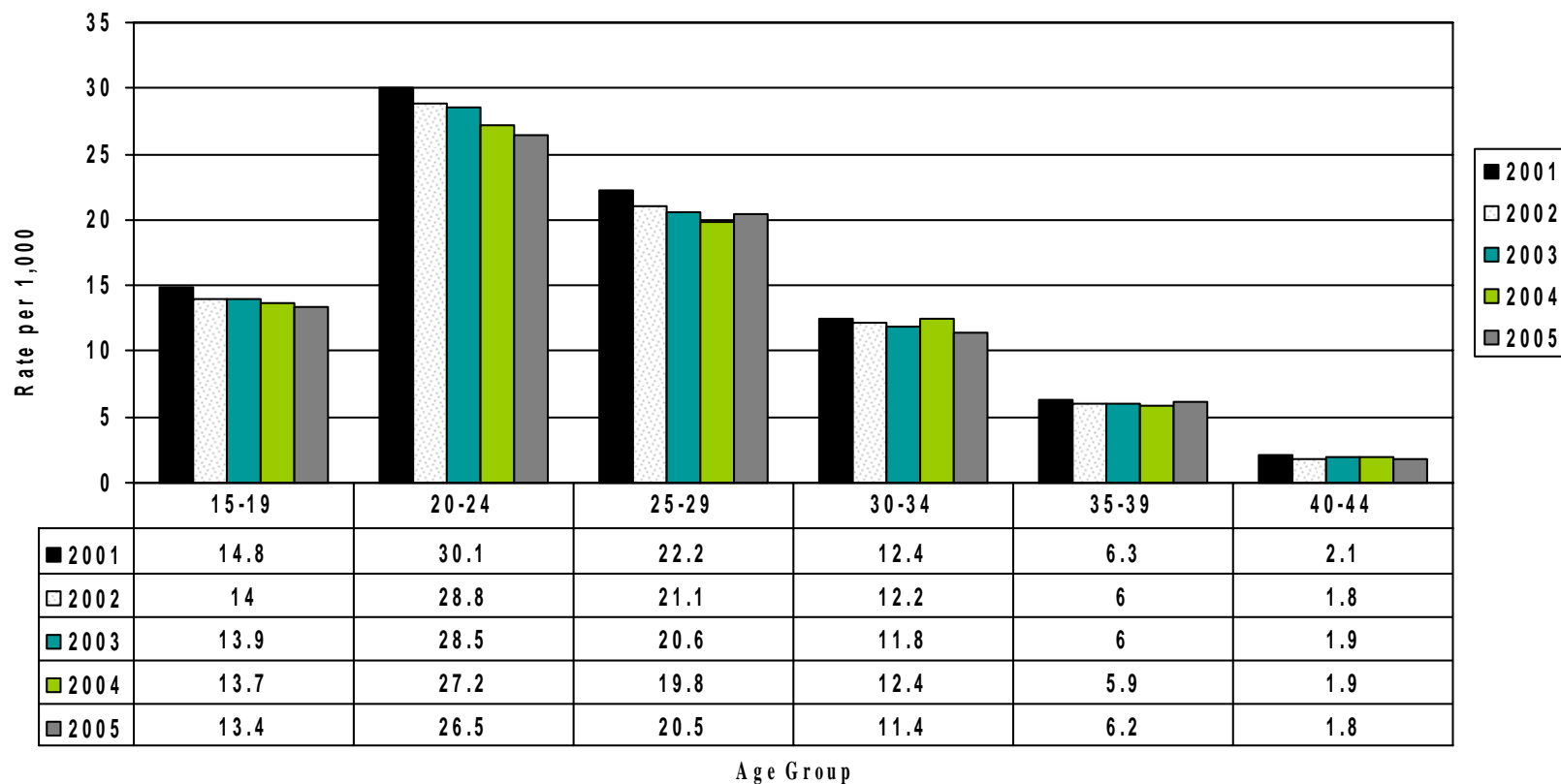


# Figure 4. Abortion ratio and abortion rate, by year, Ohio residents, 1990 - 2005



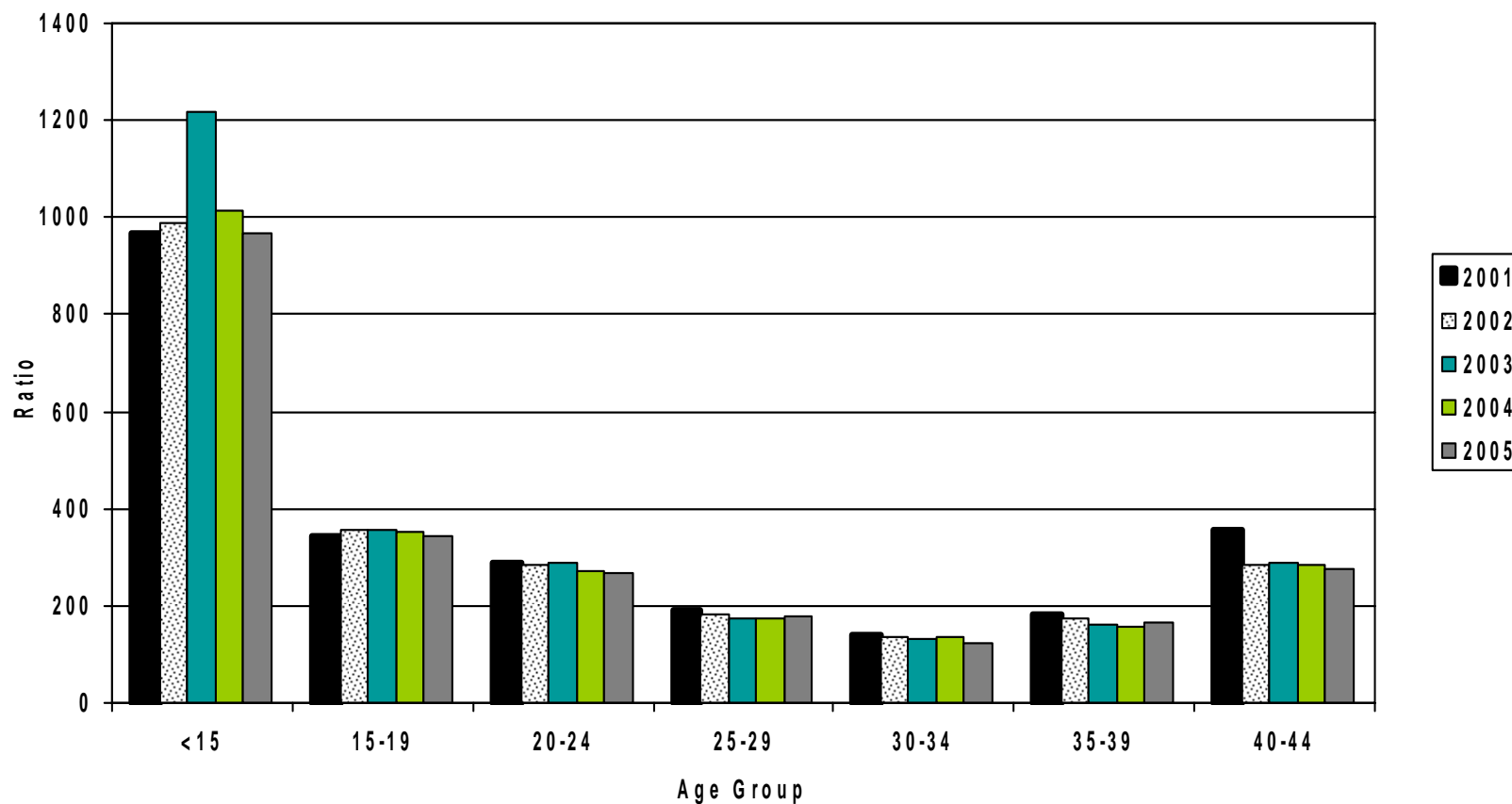
Abortion ratio is number of abortions per 1,000 live births. 2003 births were used for calculating 2003-2005 ratio. Abortion rate is number of abortions per 1,000 women ages 15-44.

# Figure 5. Induced abortion rates per 1,000 women by age, Ohio residents, 2001 - 2005



Abortion rate is number of abortions per 1,000 female population in specified age group.

# Figure 6. Induced abortion ratio, by age group, Ohio residents, 2001 - 2005



Abortion ratio is number of abortions per 1,000 live births in specified age group. 2003 births were used to calculate 2003-2005 ratios.

# Figure 7. Total Induced abortions by weeks of gestation, by year, 1990-2005

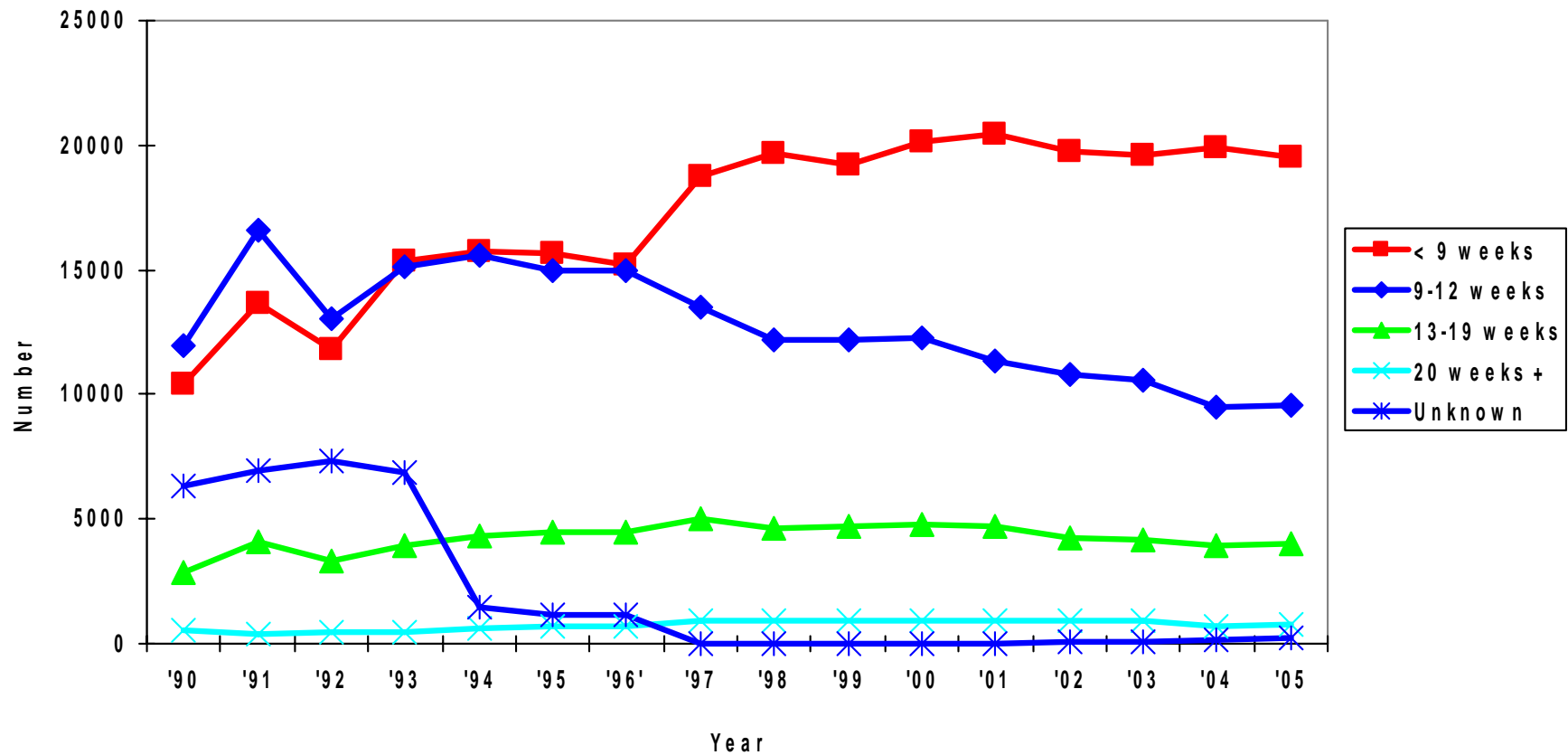


TABLE 1

## INDUCED ABORTION SUMMARY TABLE, OHIO, 2005

CHARACTERISTICS	NUMBER	PERCENT
TOTAL INDUCED ABORTIONS	34128	100.0
RESIDENCE:		
Ohio Resident	31210	91.4
Out-of-State Resident	2918	8.6
AGE:		
Under 20 Years	6057	17.7
20-24 Years	11502	33.7
25 Years and Over	16310	47.8
Age Not Reported	259	0.8
RACE GROUP:		
White	19673	57.6
Black	12070	35.4
American Indian	76	0.2
Asian/Pacific Islander	723	2.1
Other/Unknown	1586	4.6
HISPANIC:		
Non-Hispanic	32618	95.6
Hispanic	1118	3.3
Unknown	392	1.1
LEVEL OF EDUCATION:		
Less than Grade 9	653	1.9
Grade 9-12	20911	61.3
1-2 Yrs College	5971	17.5
3-4 Yrs College	4904	14.4
5+ Yrs College	935	2.7
Unknown	754	2.2
MARITAL STATUS:		
Married <u>1</u> /	5279	15.5
Unmarried <u>2</u> /	27963	81.9
Not Reported	886	2.6
NUMBER OF LIVING CHILDREN:		
None	9415	27.6
One	9505	27.9
Two or More	11263	33.1
Not Reported	3945	11.6
WEEKS OF GESTATION:		
Less than 9 Weeks	19549	57.3
9-12 Weeks	9547	28.0
13 Weeks and Over	4799	14.1
Not Reported	233	0.7

1/ Includes Separated2/ Includes Never Married, Divorced, Widowed

TABLE 2

## SELECTED CHARACTERISTICS OF INDUCED ABORTIONS REPORTED IN OHIO, 1996-2005

Characteristic	2005	2004	2003	2002	2001	2000	1999	1998	1997	1996
<u>NUMBER OF ABORTIONS</u>										
TOTAL INDUCED ABORTIONS	34128	34242	35319	35830	37464	38140	37041	37479	38242	36530
RESIDENCE:										
Ohio Resident	31210	31391	32180	32687	34174	35022	34134	34829	35650	33836
Out-of-State Resident	2918	2851	3139	3143	3290	3118	2907	2606	2509	2635
Unknown	0	0	0	0	0	0	0	44	83	59
AGE:										
Under 15 Years	240	253	292	277	286	314	279	334	354	200
15-19 Years	5817	5911	6014	6098	6485	6860	6997	7395	7795	6382
20-24 Years	11502	11772	12441	12370	12710	13029	12391	12447	12682	12200
25-29 Years	7968	7655	7836	7984	8531	8885	8774	8973	8951	8733
30-34 Years	4687	4875	4980	5205	5299	5073	4797	4528	4689	4695
35-39 Years	2708	2589	2660	2775	2956	2957	2857	2859	2859	3055
40-44 Years	874	910	938	906	1064	948	883	876	833	954
45 Years & Older	73	68	55	61	114	53	37	42	35	66
Unknown	259	209	103	154	19	21	26	25	44	245
EDUCATION:										
Less than Grade 9	653	675	756	755	797	612	493	632	644	584
Grade 9-12	20911	21222	22359	22742	23834	24281	23287	23911	24547	20651
1 Or More College Years	11810	11763	11924	11893	12593	12823	11919	11860	12495	12888
None/Not Reported	754	582	280	440	240	424	1342	1076	556	2407
RACE:										
White	19673	19952	20717	20934	22045	22581	22143	22366	22894	22438
Black	12070	12028	12463	12689	13160	13480	12680	12155	12377	11563
Asian/Pacific Islander	723	731	731	740	775	782	720	661	718	519
Other/Unknown/Not Reported	1662	1531	1418	1467	1484	1297	1498	2297	2253	2010
MARITAL STATUS:										
Never Married	25595	25489	26263	26140	27276	27460	25944	25997	26720	25292
Married	4199	4366	4737	4720	5058	5245	4928	4904	5082	4974
Separated	1080	1146	1148	1215	1381	1374	1334	1317	1331	1379
Divorced	2296	2462	2663	2892	3104	3300	3350	3502	3624	3777
Widowed	72	88	89	100	110	126	101	114	116	135
Unknown	886	691	419	763	535	635	1384	1645	1369	973
NUMBER OF LIVING CHILDREN:										
No Children	9415	9007	9913	10154	10866	11103	11480	11861	13884	12298
One Child	9505	9535	9805	9970	10719	11006	10650	10726	10774	10064
Two or more Children	11263	11515	11800	12179	12638	12679	12030	11546	11417	10451
Unknown	3945	4185	3801	3527	3241	3352	2881	3346	2167	3717
WEEKS OF GESTATION:										
Less than 9 Weeks	19549	19933	19610	19755	20432	20161	19212	19708	18784	15236
9 - 12 Weeks	9547	9489	10570	10820	11350	12293	12221	12183	13516	14965
13 - 19 Weeks	4006	3944	4133	4271	4738	4772	4695	4631	5004	4453
20 Weeks and Over	793	731	961	929	921	906	912	944	915	691
Unknown	253	145	145	55	23	8	1	13	23	1185



Table 2. Induced Abortions, 1996-2005 (page 2)

Characteristic	2005	2004	2003	2002	2001	2000	1999	1998	1997	1996
<u>PERCENTAGE DISTRIBUTION</u>										
TOTAL INDUCED ABORTIONS	100.0	100.0	100.0	100.0	100.0	100.0	100.0	100.0	100.0	100.0
<b>RESIDENCE:</b>										
Ohio Resident	91.4	91.7	91.1	91.2	91.2	91.8	92.2	92.9	93.2	92.6
Out-of-State Resident	8.6	8.3	8.9	8.8	8.8	8.2	7.8	7.0	6.6	7.2
Unknown	0.0	0.0	0.0	0.0	0.0	0.0	0.0	0.1	0.2	0.2
<b>AGE:</b>										
Under 15 Years	0.7	0.7	0.8	0.8	0.8	0.8	0.8	0.9	0.9	0.5
15-19 Years	17.0	17.3	17.0	17.0	17.3	18.0	18.9	19.7	20.4	17.5
20-24 Years	33.7	34.4	35.2	34.5	33.9	34.2	33.5	33.2	33.2	33.4
25-29 Years	23.3	22.4	22.2	22.3	22.8	23.3	23.7	23.9	23.4	23.9
30-34 Years	13.7	14.2	14.1	14.5	14.1	13.3	13.0	12.1	12.3	12.9
35-39 Years	7.9	7.6	7.5	7.7	7.9	7.8	7.7	7.6	7.5	8.4
40-44 Years	2.6	2.7	2.7	2.5	2.8	2.5	2.4	2.3	2.2	2.6
45 Years & Older	0.2	0.2	0.2	0.2	0.3	0.1	0.1	0.1	0.1	0.2
Unknown	0.8	0.6	0.3	0.4	0.1	0.1	0.1	0.1	0.1	0.7
<b>EDUCATION:</b>										
Less than Grade 9	1.9	2.0	2.1	2.1	2.1	1.6	1.3	1.7	1.7	1.6
Grade 9-12	61.3	62.0	63.3	63.5	63.6	63.7	62.9	63.8	64.2	56.5
1 Or More College Years	34.6	34.4	33.8	33.2	33.6	33.6	32.2	31.6	32.7	35.3
None/Not Reported	2.2	1.7	0.8	1.2	0.6	1.1	3.6	2.9	1.5	6.6
<b>RACE:</b>										
White	57.6	58.3	58.7	58.4	58.8	59.2	59.8	59.7	59.9	61.4
Black	35.4	35.1	35.3	35.4	35.1	35.3	34.2	32.4	32.4	31.7
Asian/Pacific Islander	2.1	2.1	2.1	2.1	2.1	2.1	1.9	1.8	1.9	1.4
Other/Unknown/Not Reported	4.9	4.5	4.0	4.1	4.0	3.4	4.0	6.1	5.9	5.5
<b>MARITAL STATUS:</b>										
Never Married	75.0	74.4	74.4	73.0	72.8	72.0	70.0	69.4	69.9	69.2
Married	12.3	12.8	13.4	13.2	13.5	13.8	13.3	13.1	13.3	13.6
Separated	3.2	3.3	3.3	3.4	3.7	3.6	3.6	3.5	3.5	3.8
Divorced	6.7	7.2	7.5	8.1	8.3	8.7	9.0	9.3	9.5	10.3
Widowed	0.2	0.3	0.3	0.3	0.3	0.3	0.3	0.3	0.3	0.4
Unknown	2.6	2.0	1.2	2.1	1.4	1.7	3.7	4.4	3.6	2.7
<b>NUMBER OF LIVING CHILDREN:</b>										
No Children	27.6	26.3	28.1	28.3	29.0	29.1	31.0	31.6	36.3	33.7
One Child	27.9	27.8	27.8	27.8	28.6	28.9	28.8	28.6	28.2	27.5
Two or more Children	33.0	33.6	33.4	34.0	33.7	33.2	32.5	30.8	29.9	28.6
Unknown	11.6	12.2	10.8	9.8	8.7	8.8	7.8	8.9	5.7	10.2
<b>WEEKS OF GESTATION:</b>										
Less than 9 Weeks	57.3	58.2	55.5	55.1	54.5	52.9	51.9	52.6	49.1	41.7
9 - 12 Weeks	28.0	27.7	29.9	30.2	30.3	32.2	33.0	32.5	35.3	41.0
13 - 19 Weeks	11.7	11.5	11.7	11.9	12.6	12.5	12.7	12.4	13.1	12.2
20 Weeks and Over	2.3	2.1	2.7	2.6	2.5	2.4	2.5	2.5	2.4	1.9
Unknown	0.7	0.4	10.1	0.2	0.1	0.0	0.0	0.0	0.1	3.2

TABLE 3

## RESIDENT INDUCED ABORTIONS REPORTED IN OHIO, BY COUNTY OF RESIDENCE, 1996-2005

Residence	2005	2004	2003	2002	2001	2000	1999	1998	1997	1996
OHIO	31210	31391	32180	32687	34174	35022	34134	34829	35650	33813
Adams	22	15	18	15	16	22	24	28	36	36
Allen	206	190	159	166	153	165	176	184	207	202
Ashland	61	57	64	47	67	69	74	70	57	55
Ashtabula	187	216	214	228	228	222	195	233	264	384
Athens	111	123	121	119	113	131	163	149	196	135
Auglaize	34	37	47	39	47	54	51	52	61	51
Belmont	40	29	30	24	25	41	26	38	39	22
Brown	55	44	46	67	63	71	75	71	71	55
Butler	816	843	771	773	796	769	854	859	901	951
Carroll	23	34	32	35	38	40	36	35	33	36
Champaign	55	63	52	45	58	74	61	72	70	71
Clark	282	279	331	300	342	357	319	346	349	395
Clermont	317	326	326	344	385	395	429	405	408	263
Clinton	49	45	60	74	76	74	75	62	65	80
Columbiana	188	179	162	220	202	189	178	172	179	188
Coshocton	37	32	43	35	26	34	36	42	31	19
Crawford	48	55	45	58	58	74	70	78	66	56
Cuyahoga	7412	7565	7889	8466	8644	8906	8790	8717	8732	8098
Darke	32	47	47	61	45	44	54	51	67	83
Defiance	23	37	37	37	35	43	32	69	45	68
Delaware	207	171	169	142	130	178	117	149	149	139
Erie	209	170	183	209	227	220	216	201	213	233
Fairfield	208	204	184	185	179	184	193	186	194	115
Fayette	48	41	43	27	49	44	36	45	46	56
Franklin	4601	4678	4684	4290	4645	4764	4056	4143	4276	3395
Fulton	49	41	36	43	52	48	75	62	56	78
Gallia	9	17	12	15	15	19	19	18	24	11
Geauga	128	139	121	152	135	161	148	144	137	126
Greene	282	314	311	322	306	379	321	411	390	379
Guernsey	27	49	46	61	44	59	66	56	77	47
Hamilton	2999	3172	3046	3374	3559	3578	3593	3701	3814	3925
Hancock	129	120	115	121	109	118	126	134	133	125
Hardin	32	47	35	28	36	29	40	51	36	50
Harrison	9	6	9	13	10	15	12	18	20	10
Henry	31	34	28	29	23	32	42	30	28	52
Highland	41	50	53	49	44	46	60	67	68	66
Hocking	44	26	26	29	25	34	30	27	44	17
Holmes	22	18	19	21	22	20	12	23	13	30
Huron	77	79	77	101	123	118	102	115	135	114
Jackson	35	28	34	26	35	27	32	30	35	20
Jefferson	38	17	25	23	30	23	24	22	21	21
Knox	55	66	64	67	65	65	54	70	64	48
Lake	596	571	592	598	654	563	624	594	616	520
Lawrence	20	15	32	21	18	10	18	27	20	18

TABLE 3. Resident Induced Abortions, 1996-2005 (Page 2)

Residence	2005	2004	2003	2002	2001	2000	1999	1998	1997	1996
Licking	250	259	257	258	259	269	268	242	292	193
Logan	48	50	55	59	60	78	78	86	76	72
Lorain	760	812	841	746	910	878	837	932	880	936
Lucas	1633	1603	1566	1481	1558	1600	1673	1668	1781	1664
Madison	75	49	53	49	66	55	67	54	76	59
Mahoning	791	759	845	847	847	892	827	852	871	878
Marion	101	75	73	74	78	95	107	110	122	67
Medina	292	306	322	301	318	313	289	259	297	310
Meigs	8	12	14	16	8	14	11	11	15	10
Mercer	31	36	17	44	43	46	41	37	28	40
Miami	139	163	158	142	158	175	170	199	199	209
Monroe	44	15	10	11	13	10	15	17	9	6
Montgomery	1531	1632	1709	1807	2072	2138	2158	2259	2366	2504
Morgan	7	4	10	12	9	17	13	12	8	5
Morrow	45	33	33	37	39	27	35	31	40	20
Muskingum	112	127	122	79	105	118	126	167	142	97
Noble	2	5	6	5	8	11	13	8	9	5
Ottawa	63	56	58	69	65	67	67	81	99	86
Paulding	10	7	3	9	5	8	10	8	17	12
Perry	40	34	35	32	41	41	43	54	52	30
Pickaway	46	71	64	52	57	62	66	84	76	49
Pike	20	27	19	22	31	26	16	21	29	15
Portage	414	429	467	422	447	430	447	441	453	415
Preble	45	38	44	52	56	64	69	81	70	75
Putnam	14	25	20	20	24	29	26	32	33	37
Richland	217	184	196	216	212	231	209	227	242	157
Ross	98	107	95	103	103	108	118	127	151	110
Sandusky	91	101	92	98	118	119	120	104	115	119
Scioto	68	74	85	61	66	81	62	50	73	67
Seneca	73	65	72	73	86	108	94	116	80	119
Shelby	59	54	74	53	54	87	59	80	86	78
Stark	859	795	862	900	819	851	865	895	909	958
Summit	1798	1677	1889	1870	1882	1810	1840	1809	1821	1969
Trumbull	536	493	595	633	628	683	559	557	600	593
Tuscarawas	156	135	170	139	153	130	158	157	135	134
Union	52	59	63	55	66	68	53	55	48	37
Van Wert	17	13	12	15	9	17	10	15	12	16
Vinton	13	11	14	14	17	14	8	12	20	7
Warren	253	246	269	266	287	265	271	279	283	256
Washington	28	25	37	28	41	36	31	38	37	16
Wayne	153	128	139	145	136	139	150	158	166	156
Williams	40	34	28	20	33	32	41	38	46	48
Wood	255	254	232	238	211	250	255	280	270	309
Wyandot	29	20	17	15	24	22	25	29	30	27
Ohio Co Unk	0	0	0	0	0	0	0	0	0	0

TABLE 4

## RESIDENT INDUCED ABORTIONS REPORTED IN OHIO, BY COUNTY AND AGE, 2005.

Residence	Total	Age Group											Unk.	
		<15	15	16	17	18	19	20-24	25-29	30-34	35-39	40-44		45+
OHIO TOTAL	31210	218	400	660	887	1547	1833	10501	7282	4288	2475	813	67	239
Adams	22	1	2	0	0	2	2	5	2	7	1	0	0	0
Allen	206	0	1	5	3	8	12	65	52	36	15	7	1	1
Ashland	61	1	0	1	1	3	3	24	12	4	8	1	1	2
Ashtabula	187	0	2	4	5	13	12	66	39	23	15	7	0	1
Athens	111	0	2	0	4	7	10	49	20	12	3	4	0	0
Auglaize	34	1	1	2	0	1	5	13	7	1	2	0	0	1
Belmont	40	0	1	1	0	2	1	21	6	1	4	2	0	1
Brown	55	1	0	4	0	2	2	19	16	5	1	4	0	1
Butler	816	3	7	20	19	36	53	281	188	121	63	17	2	6
Carroll	23	0	0	1	0	2	2	4	3	4	7	0	0	0
Champaign	55	2	0	1	3	8	1	19	14	4	1	1	0	1
Clark	282	1	2	4	6	16	17	102	61	39	28	3	1	2
Clermont	317	3	2	9	12	14	15	100	61	47	43	11	0	0
Clinton	49	0	1	3	3	0	2	18	12	6	3	1	0	0
Columbiana	188	0	3	5	6	11	18	60	35	25	18	5	1	1
Coshocton	37	0	0	2	0	0	0	23	4	3	3	2	0	0
Crawford	48	0	1	3	1	1	3	20	13	4	1	1	0	0
Cuyahoga	7412	58	116	165	196	342	394	2367	1850	1150	554	164	16	40
Darke	32	1	1	2	0	0	2	11	6	6	1	2	0	0
Defiance	23	0	0	1	0	2	1	9	4	3	3	0	0	0
Delaware	207	0	3	2	10	14	14	55	40	35	22	10	0	2
Erie	209	0	1	5	8	11	19	54	48	34	19	9	0	1
Fairfield	208	1	2	4	10	12	12	61	44	36	16	7	2	1
Fayette	48	0	1	0	1	5	2	13	13	7	3	3	0	0
Franklin	4601	18	39	71	105	183	224	1658	1151	642	353	105	11	41
Fulton	49	0	2	0	2	5	2	14	14	8	2	0	0	0
Gallia	9	0	0	0	0	0	0	5	2	0	1	0	0	1
Geauga	128	1	0	4	7	6	6	41	26	11	14	12	0	0
Greene	282	0	1	3	6	18	11	118	59	26	26	10	1	3
Guernsey	27	3	1	1	1	6	7	5	1	2	0	0	0	0
Hamilton	2999	28	34	68	76	124	205	1009	696	408	246	84	6	15
Hancock	129	2	2	5	4	5	17	36	26	14	10	8	0	0
Hardin	32	0	0	0	0	4	3	14	5	2	2	1	0	1
Harrison	9	0	0	0	0	1	1	3	1	1	2	0	0	0
Henry	31	1	0	0	3	1	4	10	5	2	4	1	0	0
Highland	41	0	0	0	1	6	3	13	10	4	3	1	0	0
Hocking	44	1	0	0	3	1	2	20	9	2	5	0	0	1
Holmes	22	0	0	0	1	2	2	7	4	2	3	1	0	0
Huron	77	0	0	2	4	2	4	25	19	13	5	2	1	0
Jackson	35	0	1	2	3	3	3	12	9	0	2	0	0	0
Jefferson	38	1	0	0	0	2	2	15	13	1	3	1	0	0
Knox	55	1	1	2	3	0	1	22	15	1	5	0	1	3
Lake	596	0	8	12	16	33	38	189	132	75	60	27	2	4
Lawrence	20	0	0	1	1	0	1	8	5	3	1	0	0	0

Table 4. Resident Induced Abortions, 2005 (Page 2)

Residence	Total	Age Group												
		<15	15	16	17	18	19	20-24	25-29	30-34	35-39	40-44	45+	Unk.
Licking	250	0	2	4	6	21	18	79	55	31	25	5	1	3
Logan	48	2	2	1	2	2	5	9	12	5	6	0	0	2
Lorain	760	1	11	18	27	42	39	247	186	98	53	30	1	7
Lucas	1633	12	30	47	47	96	102	596	341	203	114	35	4	6
Madison	75	3	0	1	1	6	5	27	9	11	5	6	0	1
Mahoning	791	8	10	10	21	53	39	263	200	109	47	19	5	7
Marion	101	2	2	1	4	3	8	31	25	14	9	1	0	1
Medina	292	2	2	10	5	15	13	89	65	33	41	13	1	3
Meigs	8	0	0	0	0	1	1	3	2	0	1	0	0	0
Mercer	31	1	3	2	1	1	3	5	5	4	3	3	0	0
Miami	139	0	3	4	6	8	6	42	21	30	13	6	0	0
Monroe	44	0	0	0	0	2	3	16	4	15	3	1	0	0
Montgomery	1531	14	24	39	44	78	82	518	365	214	109	29	2	13
Morgan	7	0	0	0	1	0	0	4	1	1	0	0	0	0
Morrow	45	0	3	1	3	1	4	13	5	5	9	1	0	0
Muskingum	112	0	1	2	2	7	6	40	25	16	10	1	1	1
Noble	2	0	0	0	0	0	0	1	0	0	1	0	0	0
Ottawa	63	0	0	2	1	5	4	16	21	9	2	3	0	0
Paulding	10	1	0	0	0	0	1	1	3	3	1	0	0	0
Perry	40	0	2	0	2	0	4	14	11	4	3	0	0	0
Pickaway	46	1	2	1	1	3	3	17	5	5	4	3	0	1
Pike	20	0	0	1	1	0	2	9	7	0	0	0	0	0
Portage	414	2	5	6	7	27	38	155	74	47	38	7	0	8
Preble	45	0	0	1	0	5	3	11	16	2	5	2	0	0
Putnam	14	1	0	0	0	2	1	3	4	2	1	0	0	0
Richland	217	1	5	1	8	8	14	60	74	24	17	3	0	2
Ross	98	0	1	4	5	10	6	34	19	10	6	3	0	0
Sandusky	91	2	0	2	0	5	5	37	11	16	9	1	1	2
Scioto	68	2	0	2	2	6	9	20	16	4	4	3	0	0
Seneca	73	1	3	0	4	5	8	26	14	4	6	1	0	1
Shelby	59	1	1	1	1	2	3	27	16	5	2	0	0	0
Stark	859	5	10	17	32	37	53	269	201	113	84	30	1	7
Summit	1798	19	17	33	68	86	111	630	395	213	151	50	0	25
Trumbull	536	4	12	10	29	27	32	183	108	71	42	9	2	7
Tuscarawas	156	1	2	5	4	7	11	49	33	20	17	3	0	4
Union	52	0	1	1	2	3	4	14	16	6	3	2	0	0
Van Wert	17	0	0	0	1	1	1	7	3	2	0	2	0	0
Vinton	13	0	0	1	0	0	4	3	2	3	0	0	0	0
Warren	253	1	2	5	4	28	9	60	72	38	21	11	0	2
Washington	28	0	0	1	1	1	1	9	8	5	0	2	0	0
Wayne	153	2	0	2	6	10	9	48	28	25	13	6	1	3
Williams	40	0	0	1	1	2	3	18	5	6	1	1	0	2
Wood	255	0	6	7	11	17	20	107	40	25	13	7	1	1
Wyandot	29	0	0	1	2	0	2	8	7	7	2	0	0	0

TABLE 5a

RESIDENT INDUCED ABORTIONS REPORTED IN OHIO, BY SELECTED  
COUNTIES, RACE AND BROAD AGE GROUPS, 2005

County/Race	Total	Age Group					Unk
		10-19	20-29	30-39	40-49	50 +	
OHIO	31210	5545	17783	6763	877	3	239
White	17423	3096	9745	3815	616	2	149
Black	11572	2129	6755	2430	189	1	68
Oth/Unk	2215	320	1283	518	72	0	22
ALLEN	206	29	117	51	8	0	1
White	137	17	77	37	5	0	1
Black	56	8	34	12	2	0	0
Oth/Unk	13	4	6	2	1	0	0
ASHTABULA	187	36	105	38	7	0	1
White	168	34	92	35	6	0	1
Black	9	1	6	2	0	0	0
Oth/Unk	10	1	7	1	1	0	0
ATHENS	111	23	69	15	4	0	0
White	99	22	61	13	3	0	0
Black	4	1	1	1	1	0	0
Oth/Unk	8	0	7	1	0	0	0
BUTLER	816	138	469	184	19	0	6
White	619	108	356	137	14	0	4
Black	125	22	74	25	3	0	1
Oth/Unk	72	8	39	22	2	0	1
CLARK	282	46	163	67	4	0	2
White	203	33	117	48	4	0	1
Black	60	7	38	15	0	0	0
Oth/Unk	19	6	8	4	0	0	1
CLERMONT	317	55	161	90	11	0	0
White	303	52	155	85	11	0	0
Black	8	2	3	3	0	0	0
Oth/Unk	6	1	3	2	0	0	0
COLUMBIANA	188	43	95	43	6	0	1
White	168	42	82	37	6	0	1
Black	11	1	8	2	0	0	0
Oth/Unk	9	0	5	4	0	0	0
CUYAHOGA	7412	1271	4217	1704	179	1	40
White	2234	342	1251	539	89	1	12
Black	4664	867	2658	1043	72	0	24
Oth/Unk	514	62	308	122	18	0	4

Table 5a. Resident Induced Abortins, 2005 (Page 2)

County/Race	Total	Age Group					Unk
		10-19	20-29	30-39	40-49	50+	
DELAWARE	207	43	95	57	10	0	2
White	176	36	83	48	7	0	2
Black	14	4	8	2	0	0	0
Oth/Unk	17	3	4	7	3	0	0
ERIE	209	44	102	53	9	0	1
White	139	28	64	39	8	0	0
Black	57	12	34	10	0	0	1
Oth/Unk	13	4	4	4	1	0	0
FAIRFIELD	208	41	105	52	8	1	1
White	181	35	90	46	8	1	1
Black	21	4	14	3	0	0	0
Oth/Unk	6	2	1	3	0	0	0
FRANKLIN	4601	640	2809	995	116	0	41
White	2192	327	1352	427	63	0	23
Black	1930	265	1157	460	35	0	13
Oth/Unk	479	48	300	108	18	0	5
GREENE	282	39	177	52	11	0	3
White	193	27	118	39	7	0	2
Black	61	7	42	9	2	0	1
Oth/Unk	28	5	17	4	2	0	0
HAMILTON	2999	535	1705	654	90	0	15
White	1234	199	706	274	50	0	5
Black	1567	316	900	314	31	0	6
Oth/Unk	198	20	99	66	9	0	4
HANCOCK	129	35	62	24	8	0	0
White	111	29	52	23	7	0	0
Black	1	1	0	0	0	0	0
Oth/Unk	17	5	10	1	1	0	0
JEFFERSON	38	5	28	4	1	0	0
White	24	4	17	2	1	0	0
Black	13	1	10	2	0	0	0
Oth/Unk	1	0	1	0	0	0	0
KNOX	55	8	37	6	1	0	3
White	53	7	36	6	1	0	3
Black	2	1	1	0	0	0	0
LAKE	596	107	321	135	29	0	4
White	496	93	254	121	25	0	3
Black	57	8	40	7	2	0	0
Oth/Unk	43	6	27	7	2	0	1
LICKING	250	51	134	56	6	0	3
White	223	47	117	50	6	0	3
Black	17	3	11	3	0	0	0
Oth/Unk	10	1	6	3	0	0	0

Table 5a. Resident Induced Abortins, 2005 (Page 3)

County/Race	Total	Age Group					Unk
		10-19	20-29	30-39	40-49	50+	
LORAIN	760	138	433	151	31	0	7
White	518	93	291	103	26	0	5
Black	151	26	92	29	3	0	1
Oth/Unk	91	19	50	19	2	0	1
LUCAS	1633	334	937	317	39	0	6
White	845	152	485	180	27	0	1
Black	600	140	337	111	7	0	5
Oth/Unk	188	42	115	26	5	0	0
MAHONING	791	141	463	156	24	0	7
White	444	71	248	102	19	0	4
Black	321	69	200	44	5	0	3
Oth/Unk	26	1	15	10	0	0	0
MARION	101	20	56	23	1	0	1
White	84	16	48	19	1	0	0
Black	13	1	8	3	0	0	1
Oth/Unk	4	3	0	1	0	0	0
MEDINA	292	47	154	74	14	0	3
White	270	45	142	66	14	0	3
Black	9	1	8	0	0	0	0
Oth/Unk	13	1	4	8	0	0	0
MIAMI	139	27	63	43	6	0	0
White	126	25	53	43	5	0	0
Black	10	2	7	0	1	0	0
Oth/Unk	3	0	3	0	0	0	0
MONTGOMERY	1531	281	883	323	31	0	13
White	751	140	421	160	19	0	11
Black	675	131	400	134	9	0	1
Oth/Unk	105	10	62	29	3	0	1
PORTAGE	414	85	229	85	7	0	8
White	344	71	183	77	7	0	6
Black	48	9	33	4	0	0	2
Oth/Unk	22	5	13	4	0	0	0
RICHLAND	217	37	134	41	3	0	2
White	156	21	97	34	3	0	1
Black	55	14	34	6	0	0	1
Oth/Unk	6	2	3	1	0	0	0
SANDUSKY	91	14	48	25	2	0	2
White	74	9	40	23	2	0	0
Black	2	0	2	0	0	0	0
Oth/Unk	15	5	6	2	0	0	2
SCIOTO	68	21	36	8	3	0	0
White	62	18	33	8	3	0	0
Black	4	1	3	0	0	0	0
Oth/Unk	2	2	0	0	0	0	0



Table 5a. Resident Induced Abortins, 2005 (Page 4)

County/Race	Total	Age Group					Unk
		10-19	20-29	30-39	40-49	50 +	
SENECA	73	21	40	10	1	0	1
White	67	17	38	10	1	0	1
Black	2	1	1	0	0	0	0
Oth/Unk	4	3	1	0	0	0	0
STARK	859	154	470	197	31	0	7
White	654	116	349	153	29	0	7
Black	169	32	99	38	0	0	0
Oth/Unk	36	6	22	6	2	0	0
SUMMIT	1798	334	1025	364	50	0	25
White	1092	191	605	239	39	0	18
Black	622	133	368	105	10	0	6
Oth/Unk	84	10	52	20	1	0	1
TRUMBULL	536	114	291	113	11	0	7
White	407	89	218	87	8	0	5
Black	122	24	70	24	3	0	1
Oth/Unk	7	1	3	2	0	0	1
WARREN	253	49	132	59	11	0	2
White	221	46	119	46	9	0	1
Black	13	1	4	5	2	0	1
Oth/Unk	19	2	9	8	0	0	0
WAYNE	153	29	76	38	7	0	3
White	139	28	67	34	7	0	3
Black	7	1	5	1	0	0	0
Oth/Unk	7	0	4	3	0	0	0
WOOD	255	61	147	38	8	0	1
White	213	51	120	33	8	0	1
Black	18	2	12	4	0	0	0
Oth/Unk	24	8	15	1	0	0	0

TABLE 5b

## RESIDENT INDUCED ABORTIONS REPORTED IN OHIO, BY SELECTED COUNTIES, RACE AND AGE, 2005

County/Race	Total	Age Group															Unk.
		<15	15	16	17	18	19	15-19	20	21	20-24	25-29	30-34	35-39	40-44	45+	
OHIO	31210	218	400	660	887	1547	1833	5327	2070	2155	10501	7282	4288	2475	813	67	
White	17423	92	179	354	483	912	1076	3004	1190	1264	5948	3797	2261	1554	569	49	
Black	11572	119	199	272	356	541	642	2010	743	756	3829	2926	1714	716	177	13	
Oth/Unk	2215	7	22	34	48	94	115	313	137	135	724	559	313	205	67	5	
BUTLER	816	3	7	20	19	36	53	135	68	47	281	188	121	63	17	2	6
White	619	2	5	15	14	29	43	106	57	42	231	125	90	47	12	2	4
Black	125	1	2	4	5	4	6	21	7	2	32	42	16	9	3	0	1
Oth/Unk	72	0	0	1	0	3	4	8	4	3	18	21	15	7	2	0	1
CUYAHOGA	7412	58	116	165	196	342	394	1213	438	452	2367	1850	1150	554	164	16	40
White	2234	6	19	39	45	100	133	336	130	158	739	512	318	221	81	9	12
Black	4664	51	88	118	144	225	241	816	272	270	1460	1198	762	281	67	5	24
Oth/Unk	514	1	9	8	7	17	20	61	36	24	168	140	70	52	16	2	4
FRANKLIN	4601	18	39	71	105	183	224	622	335	300	1658	1151	642	353	105	11	41
White	2192	5	15	34	55	101	117	322	187	154	835	517	259	168	55	8	23
Black	1930	12	23	27	41	68	94	253	111	123	658	499	312	148	33	2	13
Oth/Unk	479	1	1	10	9	14	13	47	37	23	165	135	71	37	17	1	5
GREENE	282	0	1	3	6	18	11	39	27	30	118	59	26	26	10	1	3
White	193	0	1	3	4	13	6	27	13	20	74	44	19	20	6	1	2
Black	61	0	0	0	1	2	4	7	10	8	33	9	4	5	2	0	1
Oth/Unk	28	0	0	0	1	3	1	5	4	2	11	6	3	1	2	0	0

Table 5b. Resident Induced Abortions, 2005 (Page 2)

County/Race	Total	Age Group															
		<15	15	16	17	18	19	15-19	20	21	20-24	25-29	30-34	35-39	40-44	45+	Unk.
HAMILTON	2999	28	34	68	76	124	205	507	180	198	1009	696	408	246	84	6	15
White	1234	10	5	25	22	49	88	189	81	79	439	267	154	120	46	4	5
Black	1567	17	29	43	50	70	107	299	98	109	518	382	216	98	30	1	6
Oth/Unk	198	1	0	0	4	5	10	19	1	10	52	47	38	28	8	1	4
LORAIN	760	1	11	18	27	42	39	137	61	52	247	186	98	53	30	1	7
White	518	0	5	14	20	26	28	93	43	35	174	117	68	35	25	1	5
Black	151	1	5	2	4	8	6	25	12	7	44	48	22	7	3	0	1
Oth/Unk	91	0	1	2	3	8	5	19	6	10	29	21	8	11	2	0	1
LUCAS	1633	12	30	47	47	96	102	322	112	131	596	341	203	114	35	4	6
White	845	4	13	20	18	48	49	148	59	65	301	184	111	69	25	2	1
Black	600	6	13	25	20	38	38	134	42	50	227	110	74	37	6	1	5
Oth/Unk	188	2	4	2	9	10	15	40	11	16	68	47	18	8	4	1	0
MONTGOMERY	1531	14	24	39	44	78	82	267	109	108	518	365	214	109	29	2	13
White	751	9	10	16	19	48	38	131	56	51	257	164	96	64	17	2	11
Black	675	5	13	23	24	27	39	126	48	51	225	175	101	33	9	0	1
Oth/Unk	105	0	1	0	1	3	5	10	5	6	36	26	17	12	3	0	1
SUMMIT	1798	19	17	33	68	86	111	315	117	124	630	395	213	151	50	0	25
White	1092	9	7	15	39	52	69	182	65	79	388	217	131	108	39	0	18
Black	622	10	9	15	28	32	39	123	45	38	210	158	71	34	10	0	6
Oth/Unk	84	0	1	3	1	2	3	10	7	7	32	20	11	9	1	0	1

TABLE 6

## INDUCED ABORTIONS REPORTED IN OHIO, BY COUNTY OF OCCURRENCE, 1996 - 2005

County of Occurrence	2005	2004	2003	2002	2001	2000	1999	1998	1997	1996
Total Abortions Reported	34128	34242	35319	35830	37464	38140	37041	37479	38242	36530
Cuyahoga County	10797	10989	11486	11801	12534	12706	12607	12649	12032	11360
Erie County	0	0	0	0	0	0	0	0	0	1
Franklin County	6728	6856	6869	6253	6556	6760	5979	6333	6614	4900
Greene County	218	270	0	0	0	0	0	0	1	0
Hamilton County	6051	6431	6392	6961	7216	6955	6916	6817	6962	6624
Licking County	0	0	1	0	0	0	0	0	0	1
Lucas County	2691	2425	2383	2366	2445	2665	2846	2856	3112	3258
Mahoning County	835	912	955	1049	1132	1223	1096	1093	1245	1268
Miami County	0	0	0	0	0	0	0	2	1	0
Montgomery County	2752	2688	2976	3011	3398	3874	3921	4202	4369	4955
Stark County	0	0	0	0	0	1	0	0	1	1
Summit County	4056	3671	4257	4389	4183	3956	3675	3527	3878	4159
Trumbull County	0	0	0	0	0	0	1	0	0	0
Ohio County Unknown	0	0	0	0	0	0	0	0	27	3

TABLE 7

## INDUCED ABORTIONS REPORTED IN OHIO, BY METHOD OF TERMINATION AND COUNTY OF OCCURRENCE, 2005

County of Occurrence	Method of Termination											
	TOTAL	Curretage		D & Ext	D & Evac	Saline Instill	Prostag Instill	Hyster- otomy	Hyster- ectomy	Other	Non Surgical	Not Reported
		Suction	Sharp									
OHIO	34128	25511	163	255	2700	64	235	4	3	687	4700	271
CUYAHOGA	10797	8075	150	11	1266	9	37	0	0	669	814	78
FRANKLIN	6728	5534	1	53	183	20	103	2	0	6	831	51
GREENE	218	0	0	0	0	1	0	0	0	0	216	1
HAMILTON	6051	5219	2	131	320	5	33	0	0	7	319	42
LUCAS	2691	1785	6	43	231	13	14	2	1	2	570	43
MAHONING	835	751	0	0	0	1	4	0	0	1	76	5
MONTGOMERY	2752	2121	3	14	401	3	26	0	2	2	193	26
SUMMIT	4056	2026	1	3	299	12	18	0	0	0	1681	25

TABLE 8

TOTAL INDUCED ABORTIONS REPORTED IN OHIO, BY  
GESTATIONAL AGE, 2005

Gestational Age	Number	Percent
Total Abortions Reported	34128	100.0
Less than 9 Weeks	19549	57.3
9 - 12 Weeks	9547	28.0
13 - 19 Weeks	4006	11.7
20 Weeks	216	0.6
21 - 24	557	1.6
25 - 36 Weeks	20	0.1
Unknown	233	0.7

TABLE 9

RESIDENT INDUCED ABORTIONS IN OHIO, BY AGE OF WOMEN OBTAINING ABORTION  
AND BY NUMBER OF PRIOR INDUCED ABORTIONS, 2005

Age Group	Total	Prior Induced Abortion						Unk
		0	1	2	3	4	5+	
Total Abortions	31210	11824	8125	3538	1301	522	388	5512
Under 15	15	218	133	7	0	1	0	0
15-19	5327	3076	741	109	15	3	2	1381
20-24	10501	4310	2789	965	300	98	58	1981
25-29	7282	2127	2162	1174	478	193	123	1025
30-34	4288	1125	1296	758	295	147	125	542
35-39	2475	693	795	398	162	51	64	312
40-44	813	251	264	102	39	22	12	123
45-59	67	24	17	12	3	1	2	8
UNKNOWN	239	85	54	20	8	7	2	63

TABLE 10a

TOTAL INDUCED ABORTIONS IN OHIO WITH POST-ABORTION COMPLICATIONS, BY  
TYPE OF COMPLICATION, 2005

(DATA SOURCE IS 'POST-ABORTION CARE REPORT FOR COMPLICATIONS')

Complication Type	Number of Complications	Percent of Abortions with Complications
Perforation of Uterus	1	0.00%
Cervical Laceration	0	0.00%
Hemorrhage	13	0.04%
Incomplete Abortion	37	0.11%
Hematometra	22	0.07%
Anesthetic	0	0.00%
Failed Abortion	4	0.01%
Infection	8	0.02%
Death	0	0.00%
Other	5	0.01%
Total Number of Complications*	90	Not Applicable
Total Abortions with One or More Complications	75	0.22%



TABLE 10b

TOTAL INDUCED ABORTIONS IN OHIO WITH POST-ABORTION COMPLICATIONS, BY  
TYPE OF COMPLICATION, 2005

(DATA SOURCE IS 'CONFIDENTIAL ABORTION REPORT')

Complication Type	Number of Complications	Percent of Abortions with Complications
Perforation of Uterus	0	0.00%
Cervical Laceration	25	0.07%
Hemorrhage	5	0.01%
Incomplete Abortion	6	0.02%
Hematometra	1	0.00%
Anesthetic	0	0.00%
Failed Abortion	2	0.01%
Infection	7	0.02%
Death	0	0.00%
Other	14	0.04%
Total Number of Complications*	60	Not Applicable
Total Abortions with One or More Complications	57	0.17%

\* Note: An abortion may have more than one reported complication. Complications reported in this table may or may not also be reported in Table 10a.

TABLE 11

TOTAL INDUCED ABORTIONS IN OHIO WITH POST-ABORTION COMPLICATIONS, BY  
TYPE OF COMPLICATION AND GESTATION PERIOD, 2005

(DATA SOURCE IS POST-ABORTION CARE REPORT FOR COMPLICATIONS')

Complication Type	Total	Gestation Period				Unk
		< 9 Wks	9-12 Wks	13-19 Wks	20+ Wks	
(Number of Complications)						
Perforation of Uterus	1	0	0	1	0	0
Cervical Laceration	0	0	0	0	0	0
Hemorrhage	14	4	4	4	1	0
Incomplete Abortion	37	18	10	7	1	1
Hematometra	22	6	10	5	0	1
Anesthetic	0	0	0	0	0	0
Failed Abortion	3	3	0	0	0	0
Infection	8	4	1	2	0	1
Death	0	0	0	0	0	0
Other/Unreported	6	3	2	0	0	1
Total Number of Complications*	90	38	27	19	2	4
Total Abortions with One or More Complications	75	34	25	12	1	3

NOTE: An abortion may have more than one reported complication. Complications reported in this table may or may not also be reported in Table 10b.

TABLE 12

TOTAL INDUCED ABORTIONS IN OHIO WITH POST-ABORTION COMPLICATIONS, BY TYPE OF COMPLICATION  
AND TERMINATION METHOD, 2005

(DATA SOURCE IS 'CONFIDENTIAL ABORTION REPORTS')

Method of Termination	Complication Type									Total Complications	Abortions w/ One or More Complications
	Hemorrhage	Perforation of Uterus	Cervical Laceration	Infection	Anesthetic	Failed Abortion	Incomplete Abortion	Hematometra	Other		
A. Suction Curettage	0	0	13	4	0	0	4	0	3	24	23
B. Sharp Curettage	0	0	0	0	0	0	0	0	0	0	0
C. Dilation & Extraction	1	0	0	0	0	0	0	0	0	1	1
D. Dilation & Evacuation	1	0	8	0	0	0	0	0	0	9	9
E. Saline/Urea Instillation	0	0	0	0	0	0	0	0	0	0	0
F. Prostaglandin Instill.	0	0	2	1	0	0	1	0	0	4	4
G. Hysterotomy	0	0	0	0	0	0	0	0	0	0	0
H. Hysterectomy	0	0	0	0	0	0	0	0	0	0	0
I. Other/Unknown	0	0	0	1	0	0	0	0	0	1	1
J. Medical/Nonsurgical	2	0	1	0	0	2	1	0	11	17	16

Source: Confidential Abortion Reports. Numbers are comparable to Table 10b, but not Tables 10a and 11 because those tables are based on Post-Abortion Care Reports for Complications. Complication from the two data sources cannot be summed.

# Confidential Abortion Report

Ohio Department of Health  
(Required pursuant to O.A.C. 3701-47-03)

1. Facility name:	For State Use Only
2. Address: <span style="float: right;">Zip code: <input style="width: 40px;" type="text"/></span>	

## GENERAL INFORMATION

3. Zip code of address of the woman: <input style="width: 100%;" type="text"/>	Ohio County of Residence (specify):	Non-Ohio State of Residence (specify):
4. Woman's identification number: <input style="width: 100%;" type="text"/>	5. Age of woman: <input style="width: 40px;" type="text"/>	6. Education: Specify highest number of years completed <input style="width: 40px;" type="text"/>
7. Marital status: <input type="checkbox"/> Never married <input type="checkbox"/> Divorced <input type="checkbox"/> Married <input type="checkbox"/> Widowed <input type="checkbox"/> Separated <input type="checkbox"/> Unknown	8A. Race or ethnic group: <input type="checkbox"/> White <input type="checkbox"/> Asian/Pacific Islander <input type="checkbox"/> Black <input type="checkbox"/> Other /Unknown (specify) _____ <input type="checkbox"/> American Indian	8B. Is woman Hispanic? <input type="checkbox"/> Yes <input type="checkbox"/> No

## MEDICAL HISTORY

9. Number of living children: <input style="width: 40px;" type="text"/>	10. Date of last live birth: <input style="width: 40px;" type="text"/> m <input style="width: 40px;" type="text"/> d <input style="width: 40px;" type="text"/> y <input style="width: 40px;" type="text"/>
11. Number of prior abortions: Spontaneous <input style="width: 40px;" type="text"/> Induced <input style="width: 40px;" type="text"/>	12. Date of last Induced abortion: <input style="width: 40px;" type="text"/> m <input style="width: 40px;" type="text"/> d <input style="width: 40px;" type="text"/> y <input style="width: 40px;" type="text"/>
13. Number of previous pregnancies: <input style="width: 40px;" type="text"/>	14. Contraceptive History: Was the woman practicing contraception at the time of conception? <input type="checkbox"/> Yes <input type="checkbox"/> No. <input type="checkbox"/> Unknown
15. Method. If yes to number 14, what was the method used?: <input type="checkbox"/> Pill, Norplant, Depo-Provera <input type="checkbox"/> Surgical <input type="checkbox"/> Condom, Jelly, Cervical Cap, Sponge, Insert <input type="checkbox"/> Other (specify) _____ <input type="checkbox"/> Rhythm, Coitus Interruptus	16. First day of last menstrual period: <input style="width: 40px;" type="text"/> m <input style="width: 40px;" type="text"/> d <input style="width: 40px;" type="text"/> y <input style="width: 40px;" type="text"/>
	17. Rh type of woman: <input type="checkbox"/> Negative <input type="checkbox"/> Positive

## MEDICAL PROCEDURE

18. Date of Termination: <input style="width: 40px;" type="text"/> m <input style="width: 40px;" type="text"/> d <input style="width: 40px;" type="text"/> y <input style="width: 40px;" type="text"/>	19A. Clinical Estimate of Gestation in weeks: <input style="width: 40px;" type="text"/>	19B. If 19A is 14 or greater, were discharge instructions given as per O.A.C. 3701-47-02? <input type="checkbox"/> YES <input type="checkbox"/> NO
20. Method of Termination: <input type="checkbox"/> Suction Curettage <input type="checkbox"/> Sharp Curettage <input type="checkbox"/> Dilation & Extraction <input type="checkbox"/> Dilation & Evacuation <input type="checkbox"/> Saline/Urea Installation <input type="checkbox"/> Prostaglandin Installation <input type="checkbox"/> Hysterotomy <input type="checkbox"/> Hysterectomy <input type="checkbox"/> Other (specify) _____ <input type="checkbox"/> Medical (NonSurgical) Specify Medication(s) _____		
21. Medical condition of the woman at the time of the abortion: <input type="checkbox"/> Good <input type="checkbox"/> Fair <input type="checkbox"/> Other (specify) _____	22. Type of procedure done immediately after the abortion: <input type="checkbox"/> Sterilization <input type="checkbox"/> None <input type="checkbox"/> Other (specify) _____	
23. Post Abortion Complications (Indicate all): <input type="checkbox"/> None <input type="checkbox"/> Hemorrhage <input type="checkbox"/> Perforation of uterus <input type="checkbox"/> Cervical laceration <input type="checkbox"/> Infection <input type="checkbox"/> Anesthetic <input type="checkbox"/> Failed Abortion <input type="checkbox"/> Incomplete Abortio <input type="checkbox"/> Hematometra <input type="checkbox"/> Death <input type="checkbox"/> Other (specify) _____	24. Type of family planning recommended: <input type="checkbox"/> Pill, Norplant, Depo-Provera <input type="checkbox"/> Condom, Jelly, Cervical Cap, Sponge, Insert <input type="checkbox"/> Rhythm, Coitus Interruptus <input type="checkbox"/> Surgical <input type="checkbox"/> Other (specify) _____	
25. Type of Counseling given: <input type="checkbox"/> Psychological <input type="checkbox"/> Social Service <input type="checkbox"/> Pastoral <input type="checkbox"/> Medical <input type="checkbox"/> Other (specify) _____ <input type="checkbox"/> None		
26. Physician's name (Type or print):	M.D. D.O.	Physician's Signature: _____ Date: _____

**Send completed forms to:  
OHIO DEPARTMENT OF HEALTH,  
CONFIDENTIAL REPORTS A,  
P.O. BOX 118, COLUMBUS, OHIO 43216**

# Post Abortion Care Report For Complications

Ohio Department of Health

(Required Pursuant to O.A.C. 3701-47-03)

To be completed by the physician providing post-abortion care

State Use Only

1. Facility where post-abortion care was provided:

2. Street or Post Number

City

State

Zip

3. Date of Abortion: Month Day Year

\_\_\_/\_\_\_/\_\_\_

4. Weeks of Gestation:

\_\_\_\_\_

5A. Facility where Abortion was performed:

5B Address of Facility:

Street or Post Number

City

State

Zip

6. Date Post Abortion Care Began: Month Day Year

\_\_\_/\_\_\_/\_\_\_

7. Patient Number:

\_\_\_/\_\_\_/\_\_\_/\_\_\_/\_\_\_/\_\_\_/\_\_\_/\_\_\_/\_\_\_/\_\_\_/\_\_\_/\_\_\_/\_\_\_/\_\_\_/\_\_\_/\_\_\_

8. Complication(s) (Please check all that apply):

Hemorrhage

Failure of Amniotic Fluid Ex

Infection

Anesthetic

RH Incompatibility

Incomplete Abortion

Hematometra

Cervical Laceration

Death

Perforation of Uterus

Failed Abortion

Other (Specify) \_\_\_\_\_

9. Duration of treatment: (Indicate number of hours or days)

\_\_\_\_\_ Hours \_\_\_\_\_ Days

10. Remarks:

\_\_\_\_\_  
\_\_\_\_\_  
\_\_\_\_\_  
\_\_\_\_\_  
\_\_\_\_\_

11A. Physician's name providing care  
(Type or print)

11B. Physicians Signature:

M.D.

D.O.

Date:

Send Completed Forms to: Ohio Department of Health  
Confidential Reports A  
P O Box 118  
Columbus OH 43216

HEA 1806  
Rev 4/96