



Asthma Minority Outreach Project

Summit County

Please note: The views and opinions expressed in this presentation are those of the author(s) and do not necessarily represent official policy or position of the Ohio Department of Health.





Project Goals

1. Reduce the burden of asthma by increasing community knowledge.
2. Utilize/identify culturally competent educational resources.
3. Define ways to bridge the gap between patient advocacy and providers.



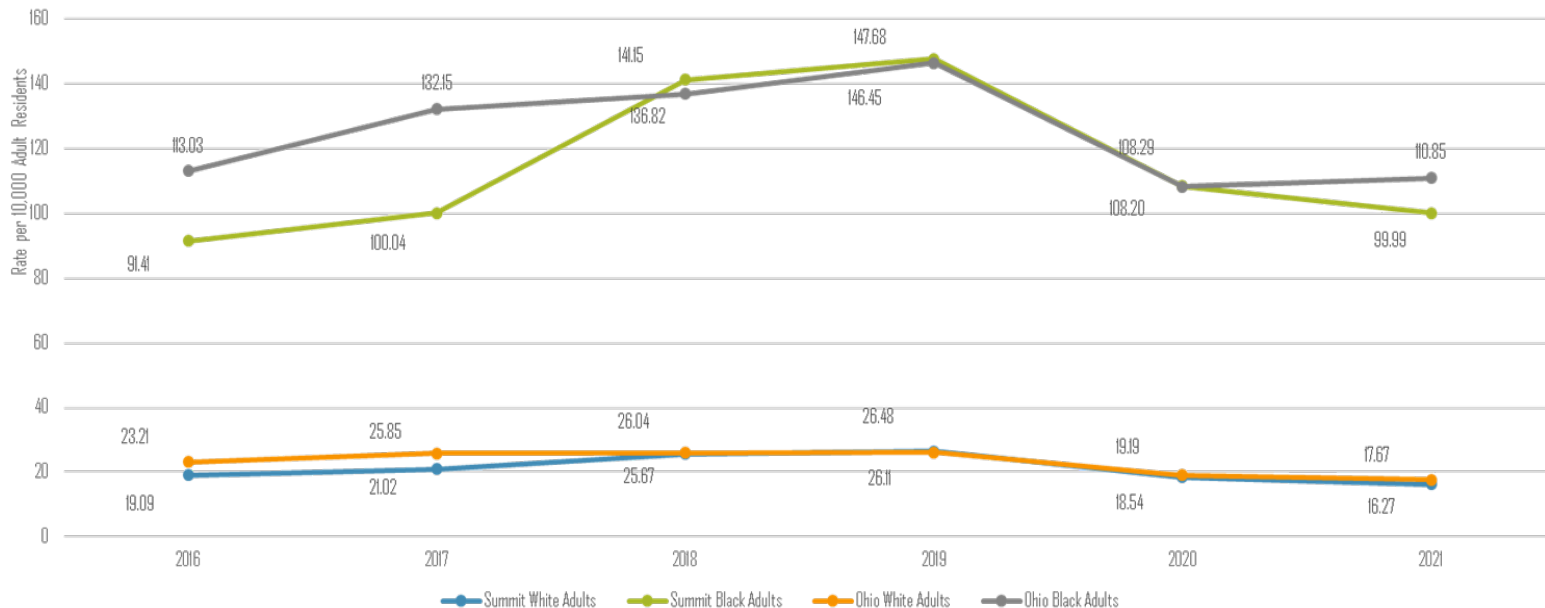
Project Objectives

- By August 2024, two community events with at least 10 community members will be held.
- By August 2024, two events with at least 10 providers will be held.
- By August 2024, create and disseminate a survey to hear from families and individuals affected by asthma.



Hospital Rates vs National Data

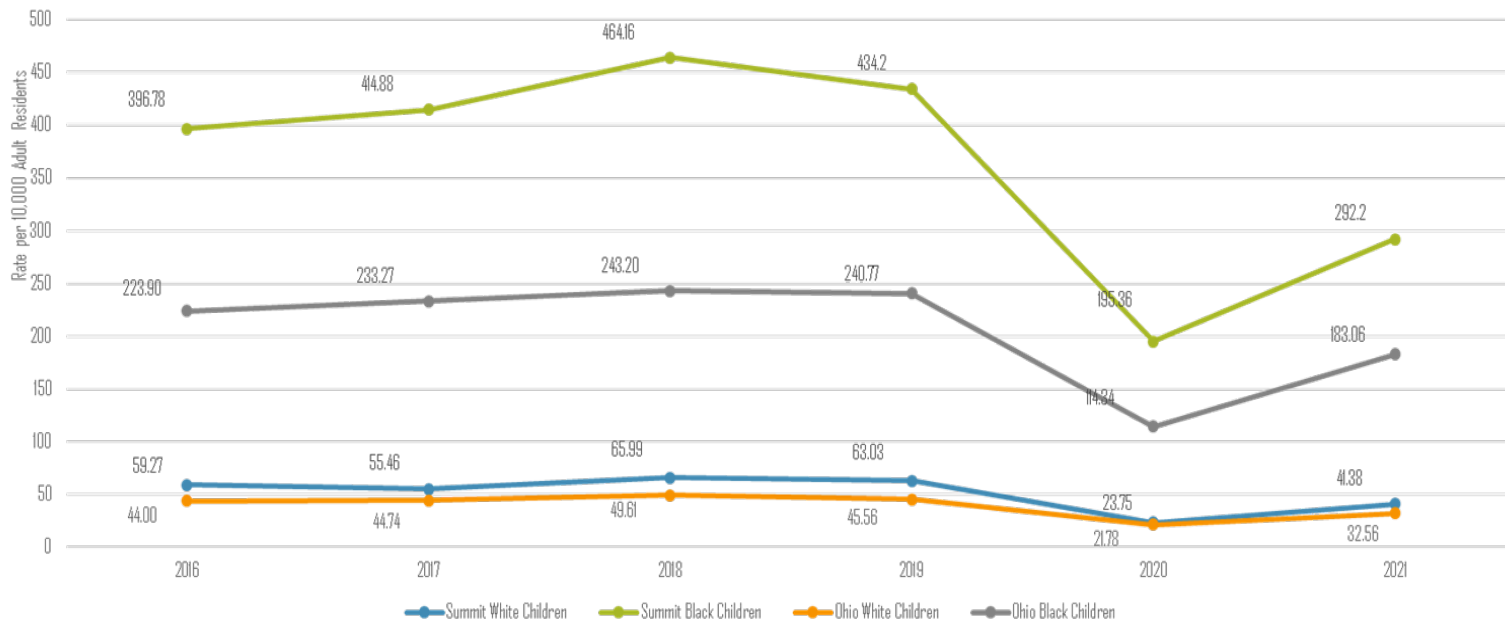
Black Adults in Summit County Experienced Higher Rates of Asthma-Related Hospitalizations and Emergency Department Visits Compared to their White Counterparts





Hospital Rates vs National Data Cont.

Black Children in Summit County Experienced Higher Rates of Asthma Hospitalizations and Emergency Department Visits Compared to their White Counterparts





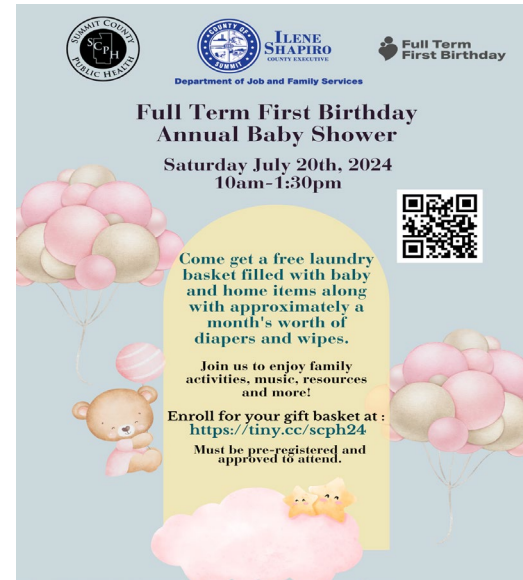
Work Plan

- Identify two (2) community events to share asthma information/resources
- Identify two (2) provider events to share asthma information/resources
- Create and disseminate a survey to hear from families and individuals affected by asthma in Summit County.



Staff shared ways on how to stay active with asthma and ways to reduce triggers. The event focused on encouraging community health and wellness by providing health screenings and hosting a variety of community organizations to share necessary resources.

Overview of Events



Community members attending the shower interacted with a host of community organizations, received resources for their family and have the opportunity to learn about local resources and programming. At this event, staff informed families about the importance of reducing asthma triggers and knowing the warning signs.



fulltermfirstbirthday.org

Overview of Events cont.



Gathered local community partners who are working together to lower the infant mortality rate in Summit County. Local organizations met to discuss concerning issues in the community as well as upcoming events. SCPH staff presented information about the M.A.T.H program (Managing asthma triggers at home).

This Early Childhood Advisory Committee pulled key stakeholders to ensure programming efforts offered to parents and families of infants and toddlers living in Summit County are high quality, family-friendly services based on best practice. SCPH staff will be presented information about the M.A.T.H (Managing asthma triggers at home program).



Activities

- July 30th- Full Term First Birthday Baby Shower
- August 3rd- West Akron 5k
- August 15th- Early Childhood Advisory Committee
- August 21st- Full Term First Birthday/ODM partners meeting.
- Survey distributed to community (August 8th - August 26th)



Asthma Survey

- Distributed electronically
- Questions created from listening session facilitator guide
- Collected information about demographics, healthcare access, economic stability, health education access, social/community context and neighborhood and built environment.

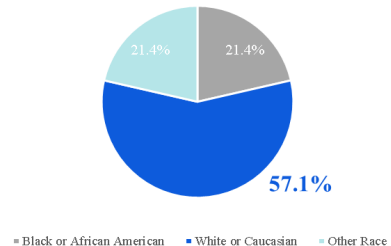


Demographics:

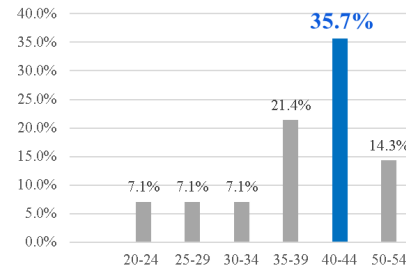
- 14 responses
- 57% of participants identified as White
- 78% of participants identified as female
- The majority of adult participants were between the ages of 35 and 44

Survey Results

Race of Attendees



Age of Adult Attendees



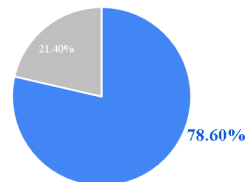


Nearly 80% of respondents identified that they engage in regular preventative care practices with regard to asthma management.

All identified having a great relationship with their or their child's provider.

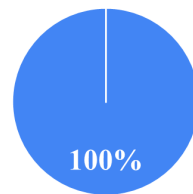
Survey Results

Do you or your family visit a primary care provider regularly for asthma management?



■ Yes ■ No

Related to managing asthma, can you describe your relationship with your primary care provider if you have one?



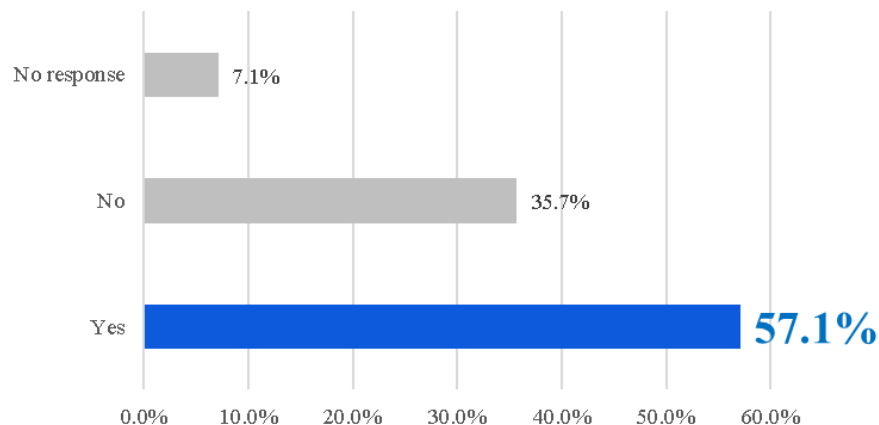
■ Great Relationship



Nearly 60% of respondents identified that triggers like mold/pests in the home, work, or school environment are challenges related to asthma triggers.

Survey Results

Do you or your family face any challenges related to managing asthma triggers such as mold or pests in the home, work, or school environment?



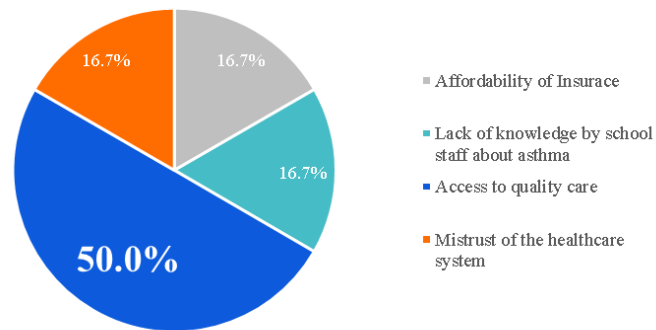


Survey Results

Regarding any challenges to asthma management

- 50% of respondents identified lack of general access to quality care as a huge barrier to managing their asthma.
- In addition, the cost of insurance, a mistrust of the healthcare system, and a lack of knowledge on how to treat different types of asthma were identified as additional barriers.

Describe some of the challenges Black adults, children, and families are facing in your neighborhood regarding their ability to get quality health care?



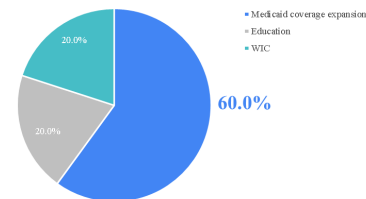


When asked to identify supports in place that have been helpful to asthma management

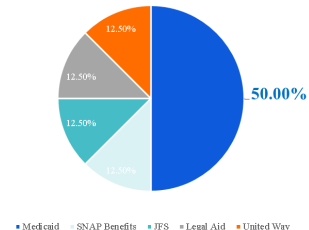
- 60% of respondents identified some sort of medicaid expansion as a major support whether that be through expansion of eligibility coverage or through expansion of medicaid-covered services.
- In addition 50% identified medicaid as a source of financial assistance.

Survey Results

What supports related to health care access and quality have been helpful for Black adults, children, and families suffering from asthma?



What financial assistance or tools have been shown to be beneficial for Black families?





Evaluation Activities

- SCPH was able to connect with portion of minority families/individuals with asthma (survey & community events)
- SCPH was able to connect with local agencies and hospital systems who want to reduce the burden of asthma.
- SCPH was able to collect some data to push asthma work forward



Use of Findings

Residents served: 150

Metrics Measured: demographics, healthcare access, healthcare education, personal experiences from individuals with asthma.

Key Achievements:

- 14 individuals took part in the asthma survey
- SCPH staff connected & shared resources with families and individuals who have asthma.
- SCPH staff was able to establish new partnerships



Partnerships Formed

- Akron Children's Hospital
- SCPH Environmental Health (M.A.T.H Program)
- Summit County Full Term First Birthday
- Early Childhood Advisory Committee
- Groundwork Ohio



Work Plan Progress Update

- 100% of community events were completed on 7/20 & 8/3.
- 100% provider events were completed on 8/15 & 8/21
- Survey was created in lieu of listening sessions and was distributed from 8/6-8/26.
- Final Grant Spending as of 8/29/24 : \$35,303.85



Lessons Learned

- Partner with organizations in high priority zip codes who are struggling with asthma.
- In order to hear from desired populations, providing incentives are necessary.
- It is important to plan ahead when possible and to remain flexible.



Sustainability

1. Build up community relationships
2. Create defined goals
3. Have a plan for funding



Proposed Sustainability

- Continue to collaborate with the M.A.T.H. program to do community education on asthma, air quality and the MATH program
- Collaborate with Akron Children's Hospital to identify ways for SCPH to play a role in the efforts related to asthma awareness



Program Facilitators

Shaleeta Smith, MPH - Director of Family Health

Nikki Becher, MAEd - Program Coordinator

De'Maria Thompson, MPH- Program Specialist, Program Director of the Local Office of Minority Health.



Milestones

- Educated over 20 agencies about the burden of asthma in Summit County and the M.A.T.H program.
- Provided resources for over 125 participants at the FTFB Baby Shower
- 14 individuals shared this experiences with asthma and how it had affected their families.



Policy Change

- Increased funding for families to receive assistance with cleaning items to reduce the amount common asthma triggers that are found in the home.
- Training created for child providers to receive education on caring for children who have asthma.
- Increased cultural competency training for medical providers.



Next Steps

- Develop a sustainability plan that best serves individuals and families with asthma in Summit County.
- Continue to foster relationships with local hospital's and organizations to identify ways in which families are able to get the assistance they need.



ODH Asthma Webpage

A site filled with
beneficial resources
to serve you and your
community!



Department of
Health
nt of



Thank you!