



## Ohio Department of Health Seasonal Influenza Activity Summary

### MMWR Week 48

### November 25<sup>th</sup> – December 1<sup>st</sup>, 2018

#### Current Influenza Activity:

##### **Current Ohio Activity Level (Geographic Spread) – Local**

*Definition: Increased ILI in 1 region; ILI activity in other regions is not increased AND recent (within the past 3 weeks) lab evidence of influenza in region with increased ILI, OR 2 or more institutional outbreaks (ILI or lab confirmed) in 1 region; ILI activity in other regions is not increased AND recent (within the past 3 weeks) lab evidence of influenza in region with the outbreaks; virus activity is no greater than sporadic in other regions.*

During MMWR Week 48, public health surveillance data sources indicate minimal intensity for influenza-like illness (ILI) in outpatient settings reported by Ohio’s sentinel providers. The percentage of emergency department visits with patients exhibiting constitutional symptoms are above baseline levels statewide; fever and ILI specified ED visits are below baseline levels. Reported cases of influenza-associated hospitalizations are **above** the seasonal threshold\*. There were 44 influenza-associated hospitalizations reported during MMWR Week 48.

#### Ohio Weekly Influenza-associated Hospitalizations by Ohio Public Health Region

|              |           |
|--------------|-----------|
| Central      | 7         |
| East Central | 9         |
| Northeast    | 6         |
| Northwest    | 4         |
| Southeast    | 8         |
| Southwest    | 5         |
| West Central | 5         |
| <b>Total</b> | <b>44</b> |

#### **Ohio Influenza Activity Summary Dashboard:**

| Data Source  | Current week value | Percent Change from last week <sup>1</sup> | # of weeks <sup>2</sup> | Trend Chart <sup>3</sup> |
|--|--------------------|--|-------------------------|--------------------------|
| <b>Influenza-like Illness (ILI) Outpatient Data (ILINet Sentinel Provider Visits)</b>  | 0.97%              | -10.19%                                    | ↓ 1                     |                          |
| <b>Thermometer Sales (National Retail Data Monitor)</b>                                | 1049               | 7.26%                                      | ↑ 1                     |                          |
| <b>Fever and ILI Specified ED Visits (EpiCenter)</b>                                   | 1.85%              | 0.00%                                      | —                       |                          |
| <b>Constitutional ED Visits (EpiCenter)</b>  | 8.89%              | -0.45%                                     | ↓ 1                     |                          |
| <b>Confirmed Influenza-associated Hospitalizations (Ohio Disease Reporting System)</b> | 44                 | 83.33%                                     | ↑ 4                     |                          |
| <b>Outpatient Medical Claims Data<sup>4</sup></b>                                      | 0.33%              | -15.38%                                    | ↓ 1                     |                          |

<sup>1</sup>Interpret percent changes with caution. Large variability may be exhibited in data sources with low weekly values.

<sup>2</sup>Number of weeks that the % change is increasing or decreasing.

<sup>3</sup>Black lines represent current week's data; red lines represent baseline averages

<sup>4</sup>Medical Claims Data provided by athenahealth®

\*The seasonal threshold is 25 cases of influenza-associated hospitalizations; historical data demonstrate that once the weekly count exceeds 25 cases, the number of weekly cases thereafter will likely not decrease until after the peak of influenza activity for the season

## State, Regional, and National Data:

### Ohio Surveillance Data:

- **ODH lab** has reported **20 positive** influenza tests from specimens sent from various submitters. 2018-2019 influenza season positive results: **(19) A/pdmH1N1; (0) A/H3N2; (1) Influenza B;** (through 12/01/2018).
- The **National Respiratory and Enteric Virus Surveillance System (NREVSS)** has reported **14,000** influenza tests performed at participating facilities. 2018-2019 influenza season positive results: **(9) A/pdmH1N1, (0) A/H3N2, (89) Flu A Not Subtyped, and (19) Flu B** (through 12/01/2018).
- **0 pediatric influenza-associated mortalities** have been reported during the 2018-2019 season (through 12/01/2018).
- No **novel influenza A virus infections** have been reported during the 2018-2019 season (through 12/01/2018).
- Incidence of confirmed **influenza-associated hospitalizations** in 2018-2019 season = **154** (through 12/01/2018).

**HHS Regional Surveillance Data\*:** During week 47 (**November 18<sup>th</sup> – November 24<sup>th</sup>, 2018**), the proportion of outpatient visits for ILI in Region 5 (Ohio is in Region 5) was 1.6%, which is **below** the regional baseline of 1.8%. Indiana, West Virginia, and Michigan reported Sporadic Activity; Pennsylvania and Ohio reported Local Activity; Kentucky reported Regional Activity.

**National Surveillance Data\*:** During week 47 (**November 18<sup>th</sup> – November 24<sup>th</sup>, 2018**), the majority of U.S. states reported Minimal influenza activity; a few states are reporting Low, Moderate, or High activity. The proportion of outpatient visits for ILI was 2.3%, which is **above** the national baseline of 2.2%. Five of 10 regions reported ILI at or above their region-specific baseline level. The most frequently identified influenza virus type reported by public health laboratories was **influenza A (H1N1)**.

\*National-level and regional-level data are reported one week later than Ohio state-level data

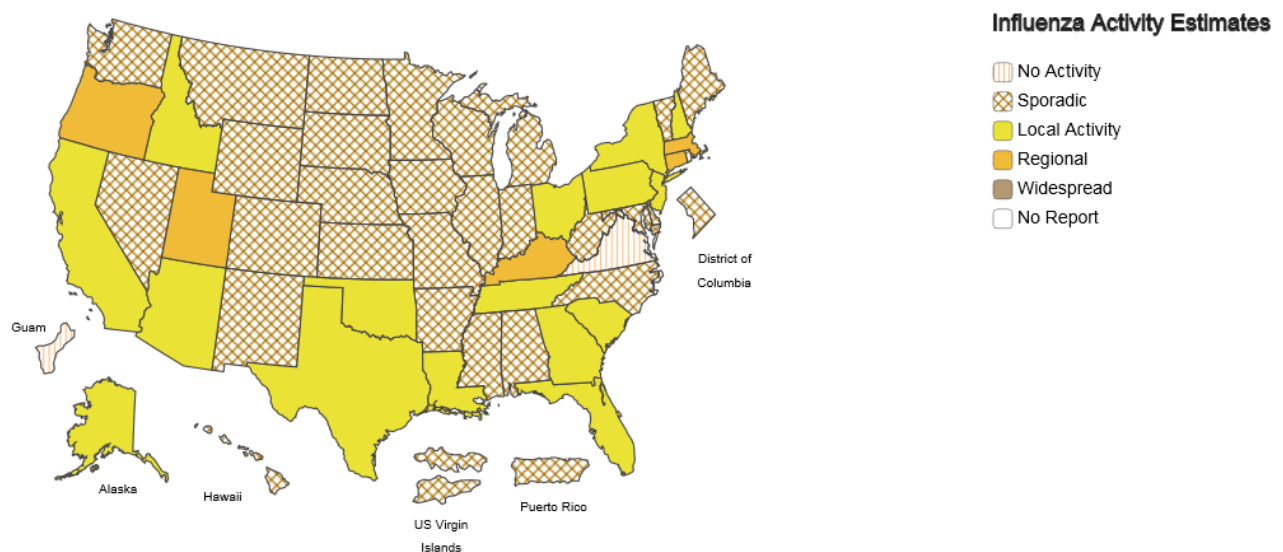
FLUVIEW



## A Weekly Influenza Surveillance Report Prepared by the Influenza Division

Weekly Influenza Activity Estimates Reported by State and Territorial Epidemiologists\*

Week Ending Nov 24, 2018 - Week 47



\*This map indicates geographic spread and does not measure the severity of influenza activity.

## 2018-2019 Influenza Vaccine Components:

| A/B | Virus  | Trivalent | Quadrivalent |
|-----|--|-----------|--------------|
| A   | Michigan/45/2015 (H1N1)pdm09-like                | X         | X            |
| A   | A/Singapore/INFIMH-16-0019/2016 (H3N2)-like      | X         | X            |
| B   | B/Colorado/06/2017-like virus (Victoria lineage) | X         | X            |
| B   | Phuket/3073/2013-like (B/Yamagata lineage)       |           | X            |

### Antigenic Characterization:

CDC has antigenically or genetically characterized 338 influenza viruses collected May 20, 2018 – November 24, 2018, and submitted by U.S. laboratories, including 166 influenza A(H1N1)pdm09 viruses, 106 influenza A(H3N2) viruses, and 66 influenza B viruses.

#### **Influenza A Viruses**

- **A (H1N1)pdm09:** Phylogenetic analysis of the HA genes from 166 A(H1N1)pdm09 viruses showed that all belonged to clade 6B.1. Eighty-eight A(H1N1)pdm09 viruses were antigenically characterized, and all 88 (100%) were antigenically similar (analyzed using HI with ferret antisera) to A/Michigan/45/2015 (6B.1), a cell-propagated A/Michigan/45/2015-like reference virus representing the A(H1N1)pdm09 component for the 2018-19 Northern Hemisphere influenza vaccines.
- **A (H3N2):** Phylogenetic analysis of the HA genes from 106 A(H3N2) viruses revealed extensive genetic diversity with multiple clades/subclades co-circulating. The HA genes of circulating viruses belonged to clade 3C.2a (n=41), subclade 3C.2a1 (n=61) or clade 3C.3a (n=4). Seventy influenza A(H3N2) viruses were antigenically characterized by FRA with ferret antisera, and 65 (92.9%) A(H3N2) viruses tested were well-inhibited (reacting at titers that were within 4-fold of the homologous virus titer) by ferret antisera raised against A/Singapore/INFIMH-16-0019/2016 (3C.2a1), a cell-propagated A/Singapore/INFIMH-16-0019/2016 -like reference virus representing the A(H3N2) component of 2018-19 Northern Hemisphere influenza vaccines.

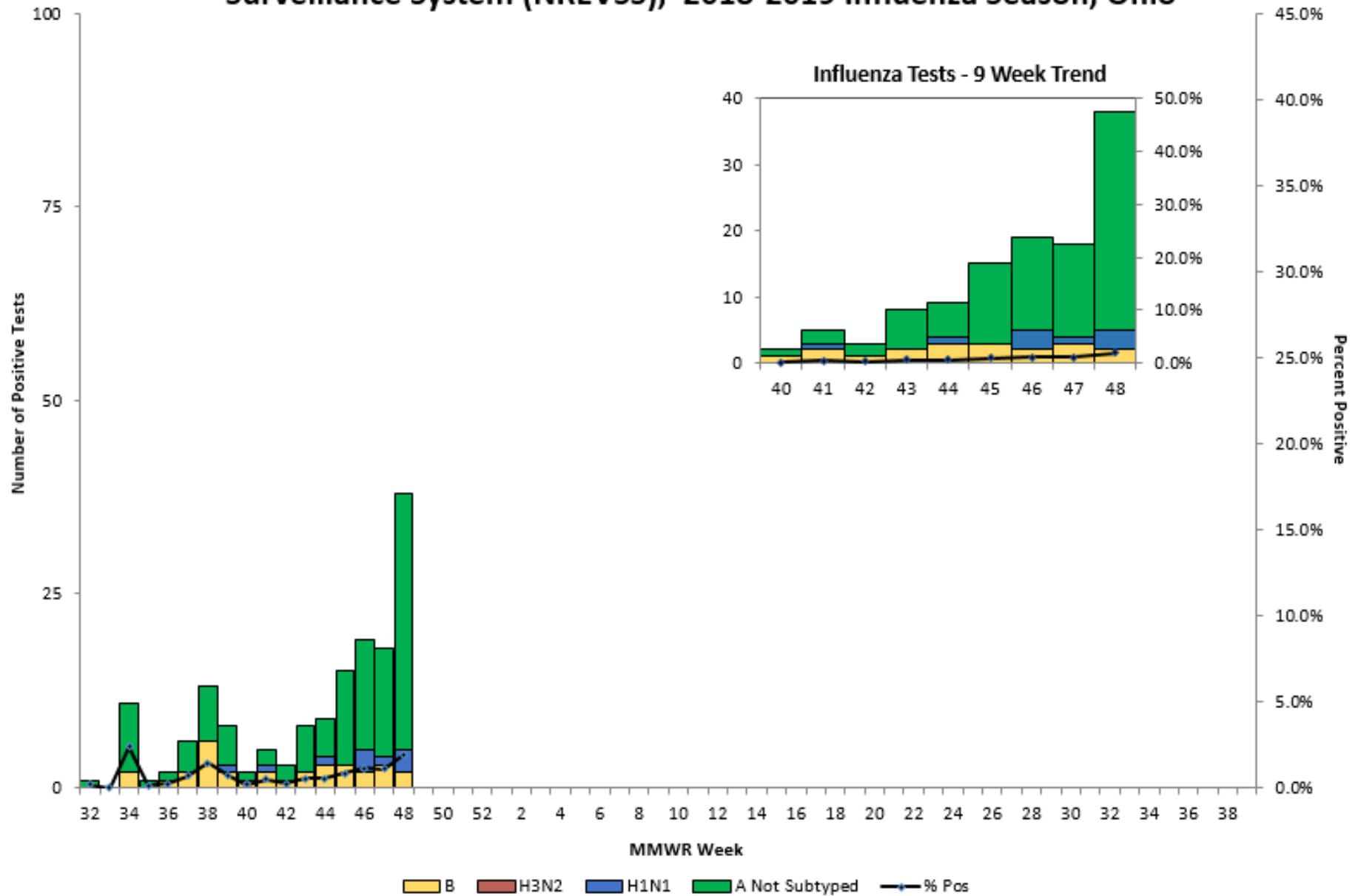
#### **Influenza B Viruses**

- **B/Victoria:** Phylogenetic analysis of 14 B/Victoria-lineage viruses indicate that all HA genes belonged to genetic clade V1A, however genetic subclades which are antigenically distinct have emerged. The majority of recent B/Victoria-lineage viruses belonged to a subclade of viruses with a 6-nucleotide deletion (encoding amino acids 162 and 163) in the HA (V1A.1, previously abbreviated as V1A-2Del). In addition, a small number of B/Victoria-lineage viruses have a three amino acid deletion (162-164) in the HA protein (abbreviated as V1A-3Del). Nine (69.2%) B/Victoria lineage viruses were well-inhibited by ferret antisera raised against cell-propagated B/Colorado/06/2017-like (V1A.1) reference virus, representing the B/Victoria lineage component of 2018-19 Northern Hemisphere influenza vaccines. Four (30.8%) B/Victoria lineage virus reacted poorly (at titers that were 8-fold or greater reduced compared with the homologous virus titer) with ferret antisera raised against cell-propagated B/Colorado/06/2017-like reference virus, and belonged to clade V1A.
- **B/Yamagata:** Phylogenetic analysis of 52 influenza B/Yamagata-lineage viruses indicate that the HA genes belonged to clade Y3. A total of 48 influenza B/Yamagata-lineage viruses were antigenically characterized, and all were antigenically similar to cell-propagated B/Phuket/3073/2013 (Y3), the reference vaccine virus representing the influenza B/Yamagata-lineage component of the 2018-19 Northern Hemisphere quadrivalent vaccines.

National activity levels and more information can be found at the following CDC pages:

- <http://www.cdc.gov/flu/weekly/usmap.htm>
- <http://www.cdc.gov/flu/>

## Positive Influenza Tests (PCR), National Respiratory and Enteric Virus Surveillance System (NREVSS), 2018-2019 Influenza Season, Ohio



**Influenza-Associated Hospitalizations, Ohio  
2018-2019 Season\***

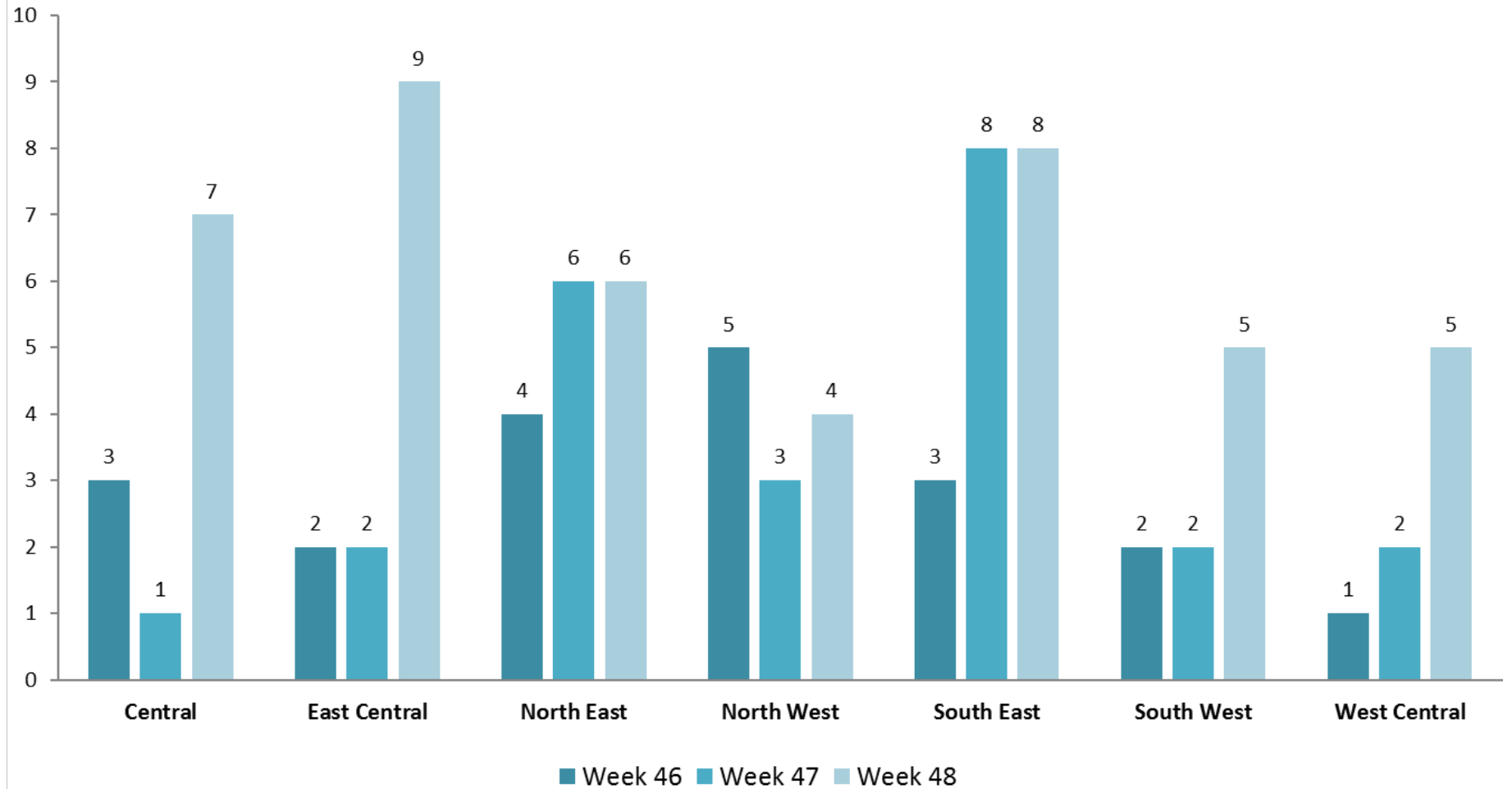
| County     | Influenza-Associated Hospitalizations | Percent of All Influenza-Associated Hospitalizations | Rate per 100,000 Population† | County       | Influenza-Associated Hospitalizations | Percent of All Influenza-Associated Hospitalizations | Rate per 100,000 Population† |
|------------|---------------------------------------|--|------------------------------|--------------|---------------------------------------|--|------------------------------|
| ADAMS      | 0                                     | 0.0%   | 0.00                         | LOGAN        | 0                                     | 0.0%   | 0.00                         |
| ALLEN      | 7                                     | 4.5%   | 6.58                         | LORAIN       | 3                                     | 1.9%   | 1.00                         |
| ASHLAND    | 0                                     | 0.0%   | 0.00                         | LUCAS        | 7                                     | 4.5%   | 1.58                         |
| ASHTABULA  | 1                                     | 0.6%   | 0.99                         | MADISON      | 0                                     | 0.0%   | 0.00                         |
| ATHENS     | 11                                    | 7.1%   | 16.99                        | MAHONING     | 0                                     | 0.0%   | 0.00                         |
| AUGLAIZE   | 2                                     | 1.3%   | 4.35                         | MARION       | 1                                     | 0.6%   | 1.50                         |
| BELMONT    | 2                                     | 1.3%   | 2.84                         | MEDINA       | 3                                     | 1.9%   | 1.74                         |
| BROWN      | 0                                     | 0.0%   | 0.00                         | MEIGS        | 2                                     | 1.3%   | 8.41                         |
| BUTLER     | 5                                     | 3.2%   | 1.36                         | MERCER       | 0                                     | 0.0%   | 0.00                         |
| CARROLL    | 0                                     | 0.0%   | 0.00                         | MIAMI        | 0                                     | 0.0%   | 0.00                         |
| CHAMPAIGN  | 0                                     | 0.0%   | 0.00                         | MONROE       | 0                                     | 0.0%   | 0.00                         |
| CLARK      | 0                                     | 0.0%   | 0.00                         | MONTGOMERY   | 8                                     | 5.2%   | 1.49                         |
| CLERMONT   | 3                                     | 1.9%   | 1.52                         | MORGAN       | 0                                     | 0.0%   | 0.00                         |
| CLINTON    | 0                                     | 0.0%   | 0.00                         | MORROW       | 0                                     | 0.0%   | 0.00                         |
| COLUMBIANA | 0                                     | 0.0%   | 0.00                         | MUSKINGUM    | 3                                     | 1.9%   | 3.49                         |
| COSHOCTON  | 0                                     | 0.0%   | 0.00                         | NOBLE        | 0                                     | 0.0%   | 0.00                         |
| CRAWFORD   | 0                                     | 0.0%   | 0.00                         | OTTAWA       | 0                                     | 0.0%   | 0.00                         |
| CUYAHOGA   | 17                                    | 11.0%  | 1.33                         | PAULDING     | 0                                     | 0.0%   | 0.00                         |
| DARKE      | 0                                     | 0.0%   | 0.00                         | PERRY        | 1                                     | 0.6%   | 2.77                         |
| DEFIANCE   | 2                                     | 1.3%   | 5.12                         | PICKAWAY     | 1                                     | 0.6%   | 1.80                         |
| DELAWARE   | 0                                     | 0.0%   | 0.00                         | PIKE         | 1                                     | 0.6%   | 3.48                         |
| ERIE       | 2                                     | 1.3%   | 2.59                         | PORTAGE      | 1                                     | 0.6%   | 0.62                         |
| FAIRFIELD  | 0                                     | 0.0%   | 0.00                         | PREBLE       | 0                                     | 0.0%   | 0.00                         |
| FAYETTE    | 0                                     | 0.0%   | 0.00                         | PUTNAM       | 1                                     | 0.6%   | 2.90                         |
| FRANKLIN   | 12                                    | 7.8%   | 1.03                         | RICHLAND     | 0                                     | 0.0%   | 0.00                         |
| FULTON     | 0                                     | 0.0%   | 0.00                         | ROSS         | 0                                     | 0.0%   | 0.00                         |
| GALLIA     | 2                                     | 1.3%   | 6.47                         | SANDUSKY     | 2                                     | 1.3%   | 3.28                         |
| GEAUGA     | 2                                     | 1.3%   | 2.14                         | SCIOTO       | 1                                     | 0.6%   | 1.26                         |
| GREENE     | 4                                     | 2.6%   | 2.48                         | SENECA       | 0                                     | 0.0%   | 0.00                         |
| GUERNSEY   | 0                                     | 0.0%   | 0.00                         | SHELBY       | 0                                     | 0.0%   | 0.00                         |
| HAMILTON   | 11                                    | 7.1%   | 1.37                         | STARK        | 4                                     | 2.6%   | 1.07                         |
| HANCOCK    | 1                                     | 0.6%   | 1.34                         | SUMMIT       | 11                                    | 7.1%   | 2.03                         |
| HARDIN     | 0                                     | 0.0%   | 0.00                         | TRUMBULL     | 1                                     | 0.6%   | 0.48                         |
| HARRISON   | 0                                     | 0.0%   | 0.00                         | TUSCARAWAS   | 0                                     | 0.0%   | 0.00                         |
| HENRY      | 0                                     | 0.0%   | 0.00                         | UNION        | 1                                     | 0.6%   | 1.91                         |
| HIGHLAND   | 0                                     | 0.0%   | 0.00                         | VAN WERT     | 1                                     | 0.6%   | 3.48                         |
| HOCKING    | 0                                     | 0.0%   | 0.00                         | VINTON       | 3                                     | 1.9%   | 22.33                        |
| HOLMES     | 2                                     | 1.3%   | 4.72                         | WARREN       | 1                                     | 0.6%   | 0.47                         |
| HURON      | 0                                     | 0.0%   | 0.00                         | WASHINGTON   | 0                                     | 0.0%   | 0.00                         |
| JACKSON    | 2                                     | 1.3%   | 6.02                         | WAYNE        | 3                                     | 1.9%   | 2.62                         |
| JEFFERSON  | 0                                     | 0.0%   | 0.00                         | WILLIAMS     | 0                                     | 0.0%   | 0.00                         |
| KNOX       | 0                                     | 0.0%   | 0.00                         | WOOD         | 1                                     | 0.6%   | 0.80                         |
| LAKE       | 1                                     | 0.6%   | 0.43                         | WYANDOT      | 1                                     | 0.6%   | 4.42                         |
| LAWRENCE   | 2                                     | 1.3%   | 3.20                         | UNKNOWN      | 0                                     | 0.0%   | *                            |
| LICKING    | 1                                     | 0.6%   | 0.60                         | <b>TOTAL</b> | <b>154</b>                            | <b>100%</b>  | <b>1.33</b>                  |

\*2018-2019 Season 10/1/2018 thru 9/29/2019

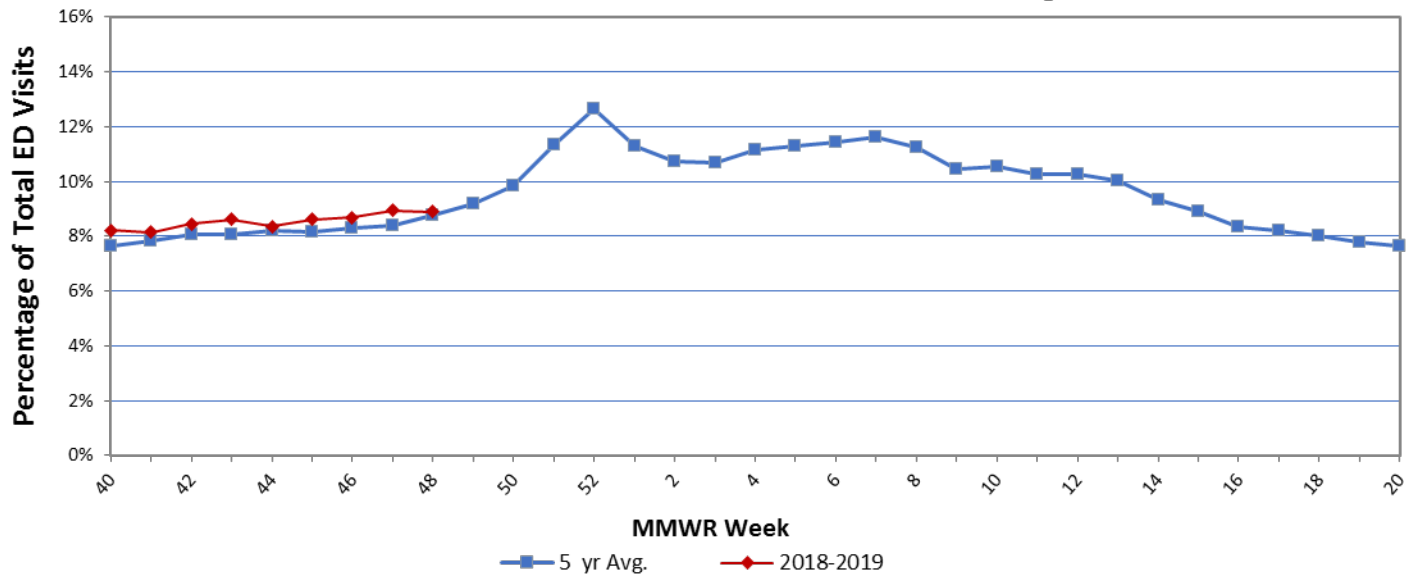
† Disease rates were calculated by number of cases per 100,000 residents using 2010 census data.

Source: Ohio Disease Reporting System

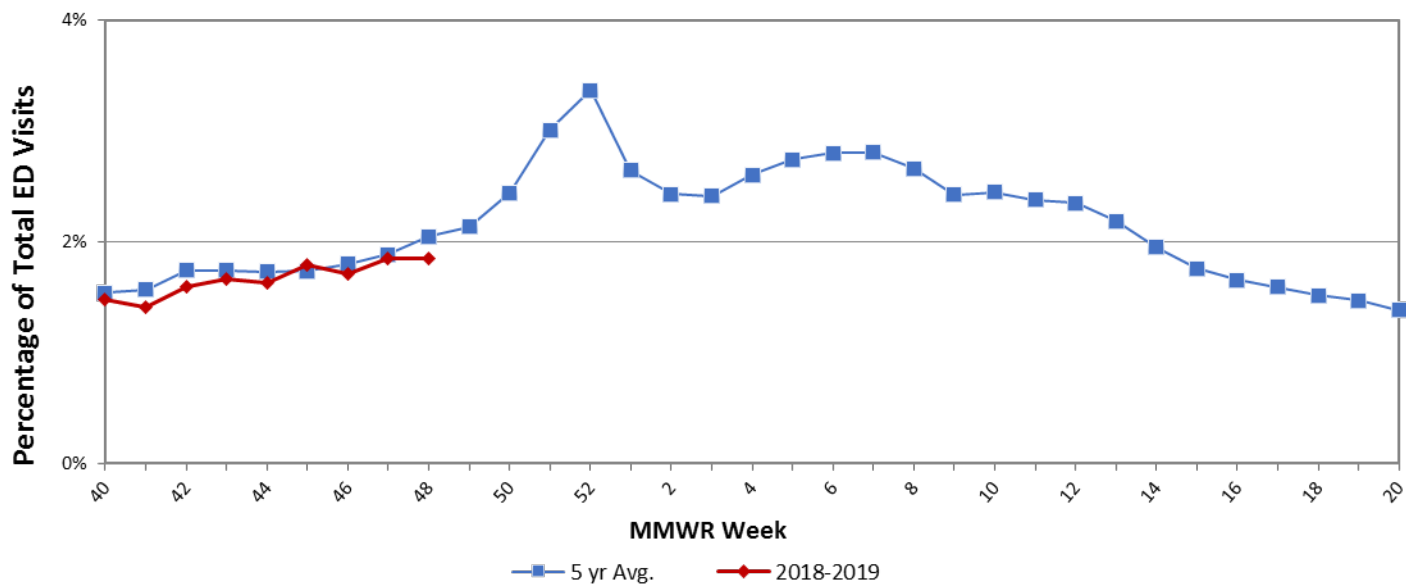
## Influenza-associated Hospitalizations by Public Health Region and MMWR Week, Ohio, 2018-2019 Influenza Season



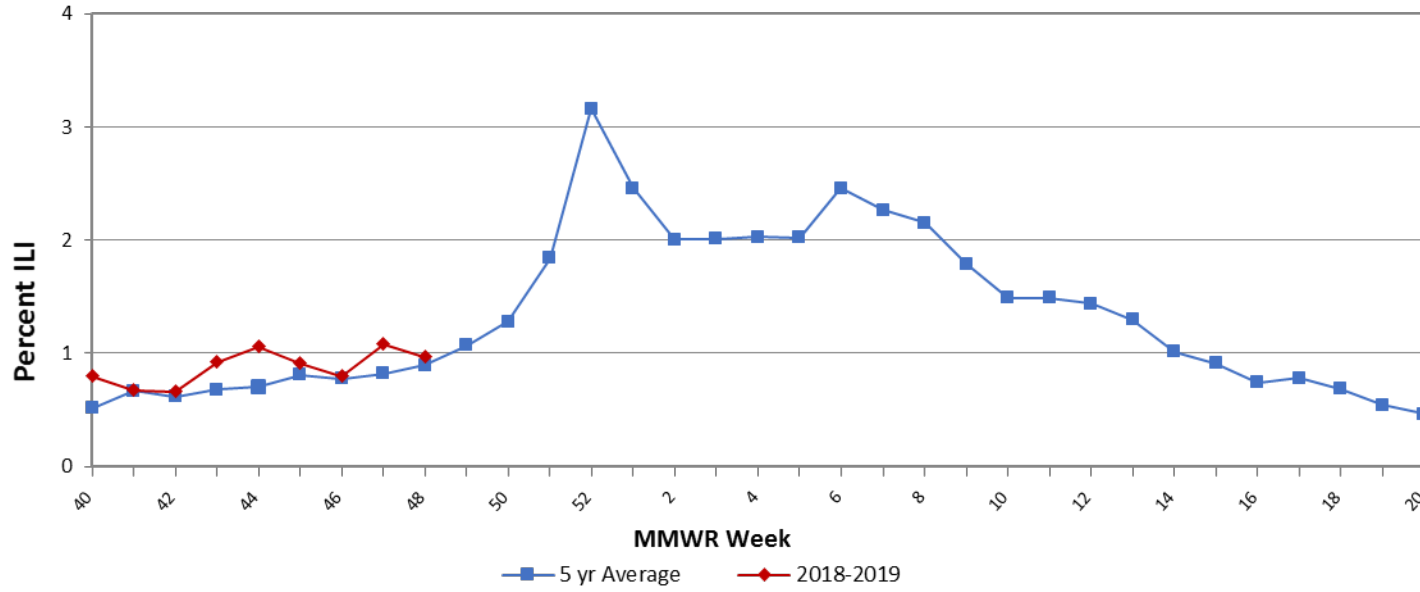
Ohio Constitutional ED Visits with 5 Year Baseline Average; 2018-2019



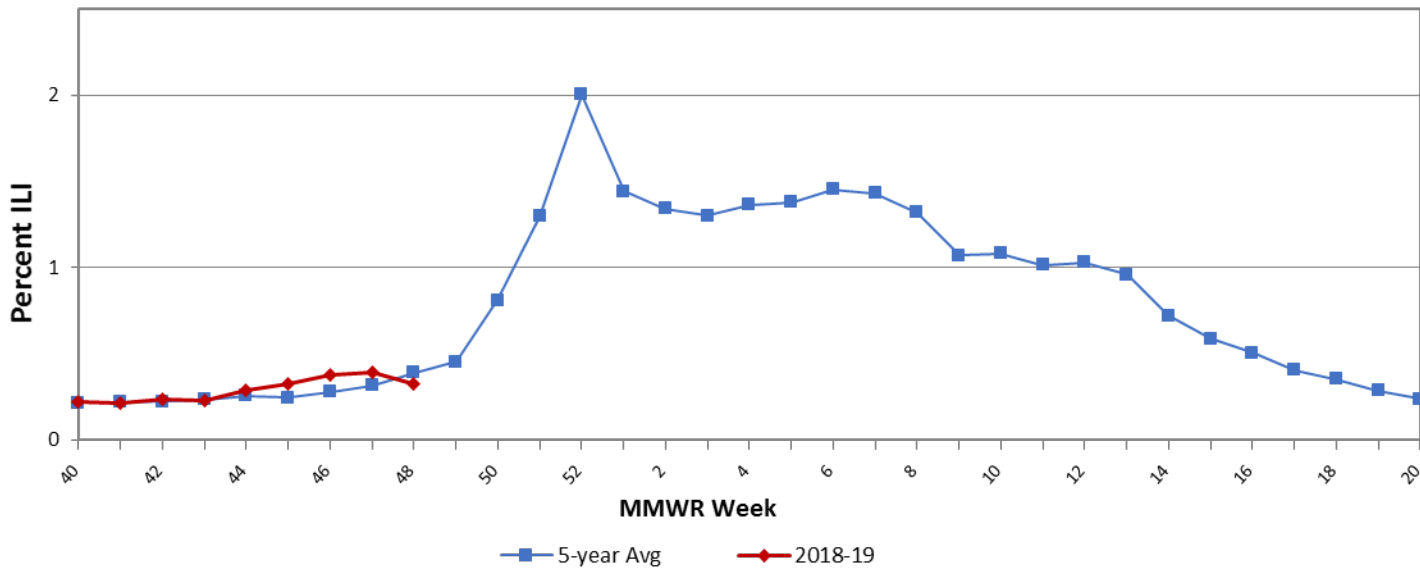
Ohio Fever & ILI Specified ED Visits with 5 Year Baseline Average; 2018-2019



Ohio Outpatient Influenza-like Illness Network (ILINet) with 5 Year Baseline Average; 2018-2019

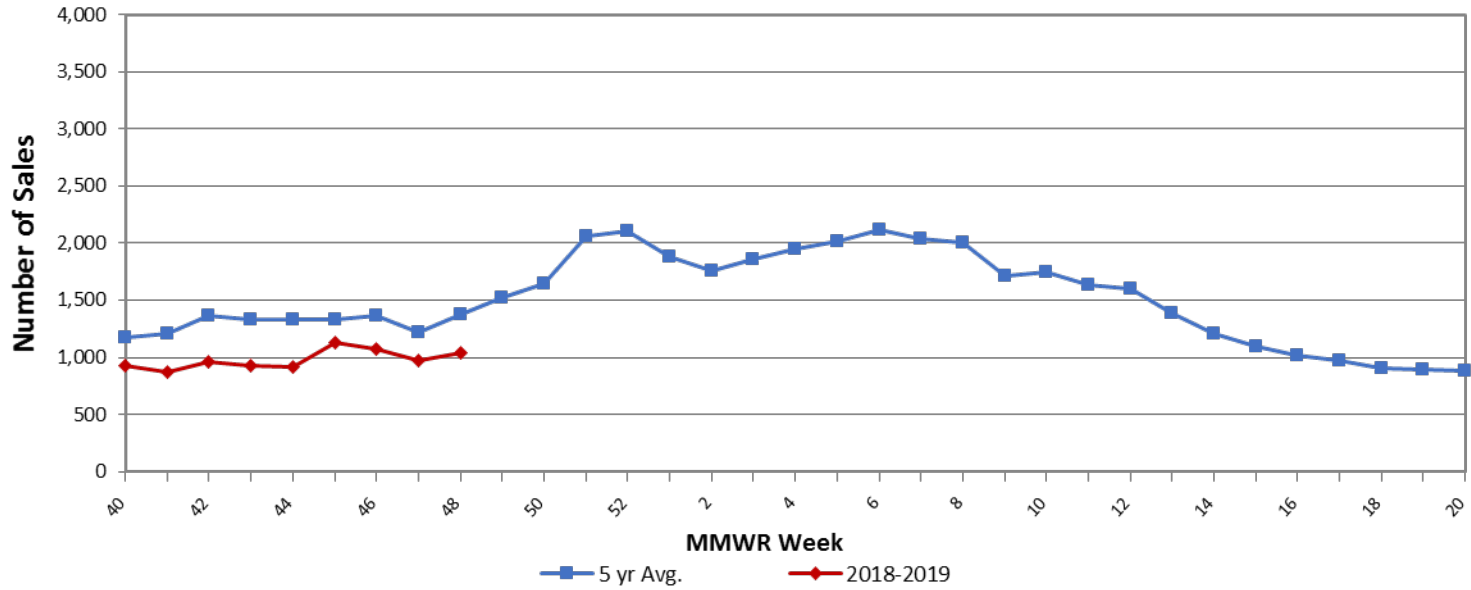


AthenaHealth: Ohio Influenza Related Outpatient Medical Claims 5 Year Baseline Average; 2018-2019

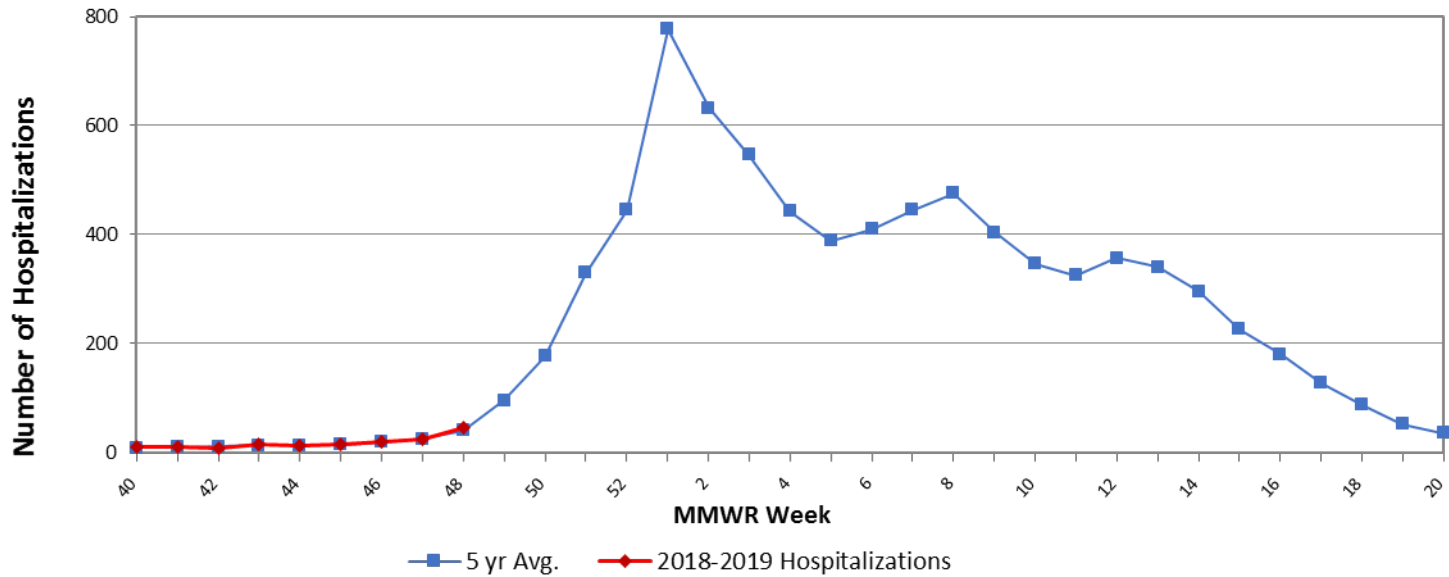




Ohio Thermometer Sales with 5 Year Baseline Average; 2018-2019



Ohio Confirmed Influenza-associated Hospitalizations by MMWR Week; 2018-2019 Season (n=154)



## Sources of Influenza Surveillance Data

- **National Retail Data Monitor (NRDM)-OTC Drug Purchases:** The NRDM collects over-the-counter (OTC) drug sales information from approximately 1,420 Ohio chain drug stores and grocery stores. For influenza surveillance, thermometer and adult cold relief sales are monitored on a weekly basis.
- **Emergency Department Visits (EpiCenter):** EpiCenter collects emergency department chief complaint data from 180 hospitals and urgent care facilities across Ohio in real time and classifies them into symptom and syndrome categories. Chief complaints from the constitutional syndrome category and the fever + ILI symptoms classifier are analyzed for influenza surveillance.
- **Sentinel Providers (ILINet):** Sentinel providers, through the US Influenza-like Illness Surveillance Network (ILINet), collect outpatient influenza-like illness (ILI) data. ILI is defined as a fever ( $\geq 100$  F), **and** cough and/or sore throat without another known cause. Providers report the total number of patients seen and the number of patients with ILI by age group on a weekly basis. Sentinel providers also submit specimens for influenza testing to the ODH laboratory throughout the influenza season. There are 83 sentinel providers enrolled in Ohio for the 2016-2017 season.
- **ODH Laboratory Surveillance:** The Ohio Department of Health Laboratory reports the number of specimens that test positive for influenza each week. Generally, specimens are submitted by sentinel provider participants. A subset of the positive specimens is sent to CDC for further testing during the season.
- **Influenza-associated Hospitalizations (ODRS):** Influenza-associated hospitalizations are reported to ODH from local health departments and hospitals by direct entry into the Ohio Disease Reporting System (ODRS). Hospitalizations can be used as an indicator of the severity of illness during a particular influenza season. This condition became reportable in 2009.
- **Influenza-associated Pediatric Mortality (ODRS):** Influenza-associated pediatric mortalities are reported into ODRS by local health department and hospital staff. Pediatric deaths can be an indicator of the severity of illness during the influenza season. This condition became reportable in 2005.
- **National Respiratory and Enteric Virus Surveillance System (NREVSS):** The National Respiratory and Enteric Virus Surveillance System (NREVSS) is a laboratory-based system that monitors temporal and geographic patterns associated with the detection of respiratory syncytial virus (RSV), human parainfluenza viruses (HPIV), respiratory and enteric adenoviruses and rotavirus. There are 19 facilities in Ohio that submit data to this system.
- **athenahealth®:** athenahealth is a technology and services company for medical billing and electronic health records. Diagnosis and procedure data from primary care visits are automatically queried to produce influenza related statistics.

**Ohio Public Health Regions:** These counties comprise the Ohio Public Health Regions described in the figures shown on pages 1 and 5.

| Central   |          | East Central |            | Noth East | North West |          | South East |            | South West | West Central |
|-----------|----------|--------------|------------|-----------|------------|----------|------------|------------|------------|--------------|
| CRAWFORD  | LOGAN    | ASHLAND      | RICHLAND   | ASHTABULA | ALLEN      | MERCER   | ATHENS     | MONROE     | ADAMS      | CHAMPAIGN    |
| DELAWARE  | MADISON  | CARROLL      | STARK      | CUYAHOGA  | AUGLAIZE   | OTTAWA   | BELMONT    | MORGAN     | BROWN      | CLARK        |
| FAIRFIELD | MARION   | COLUMBIANA   | SUMMIT     | GEAUGA    | DEFIANCE   | PAULDING | COSHOCTON  | MUSKINGUM  | BUTLER     | DARKE        |
| FAYETTE   | MORROW   | HOLMES       | TRUMBULL   | LAKE      | ERIE       | PUTNAM   | GALLIA     | NOBLE      | CLERMONT   | GREENE       |
| FRANKLIN  | PICKAWAY | MAHONING     | TUSCARAWAS | LORAIN    | FULTON     | SANDUSKY | GUERNSEY   | PERRY      | CLINTON    | MIAMI        |
| HARDIN    | UNION    | MEDINA       | WAYNE      |           | HANCOCK    | SENECA   | HARRISON   | PIKE       | HAMILTON   | MONTGOMERY   |
| KNOX      | WYANDOT  | PORTAGE      |            |           | HENRY      | VAN WERT | HOCKING    | ROSS       | HIGHLAND   | PREBLE       |
| LICKING   |          |              |            |           | HURON      | WILLIAMS | JACKSON    | SCIOTO     | WARREN     | SHELBY       |
|           |          |              |            |           | LUCAS      | WOOD     | JEFFERSON  | VINTON     |            |              |
|           |          |              |            |           |            |          | LAWRENCE   | WASHINGTON |            |              |
|           |          |              |            |           |            |          | MEIGS      |            |            |              |

If you have any further questions or comments about surveillance for seasonal influenza for the State of Ohio, please contact the Infectious Disease Informatics and Vaccine Preventable Disease Epidemiology Unit at [SMED@odh.ohio.gov](mailto:SMED@odh.ohio.gov) or call (614) 995-5599.