

## Suicide Demographics and Trends, Ohio, 2018

## FAST FACTS

- From 2007 to 2018, the number and rate of suicides increased.
- In 2018, there were 1,836 suicides.
- Since 2014, the rate among black, non-Hispanic and white, non-Hispanic males increased 53.8% and 24.0%, respectively.
- In 2018, adults 45-64 years of age had the highest rate of suicide, followed by adults 25-44 years.
- From 2007 to 2018, the rate of youth suicide (10-24 years) increased 64.4%, from 7.3 to 12.0 deaths per 100,000.
- Males are disproportionately burdened by suicide across the lifespan. Overall, the suicide rate among males is nearly 4 times the rate among females.

## RESOURCES



- Crisis Text Line  
Text "4HOPE" to 741741

## Suicide in Ohio

Suicide and intentional self-harm are major public health problems. In 2018, suicide was the 11<sup>th</sup> leading cause of all death in Ohio among all ages, the leading cause of all death among Ohioans 10-14 years of age and the second leading cause of all death among Ohioans 15-34 years. Suicide accounted for 17.5% of all injury-related deaths in 2018 and was the second leading injury-related cause of death among Ohioans 15 years and older.

From 2007 to 2018:

- suicide deaths increased 44.8%, from 1,268 to 1,836.
- the age-adjusted suicide rate increased 40.7%, from 10.8 to 15.2 deaths per 100,000 people.

Figure 1. Number and Age-Adjusted Rate of Suicide, Ohio, 2007–2018

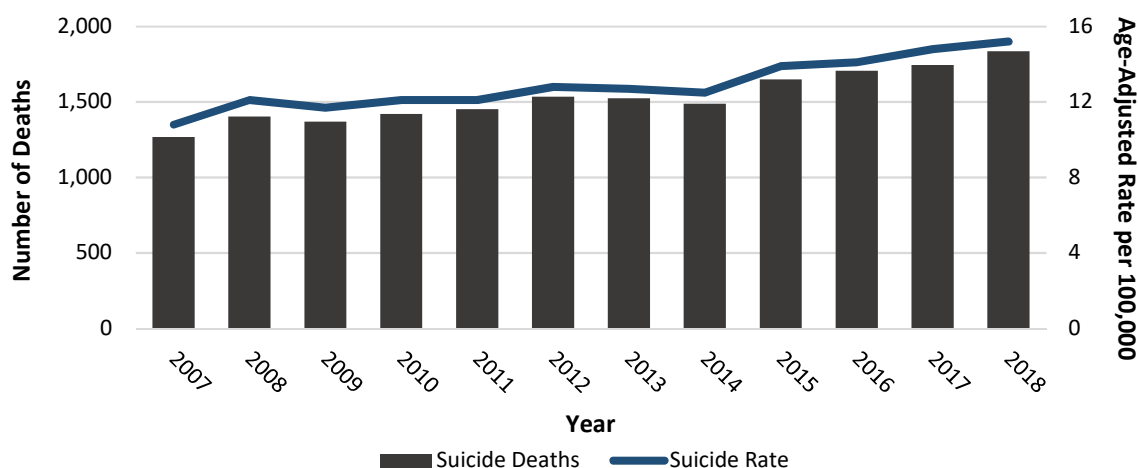
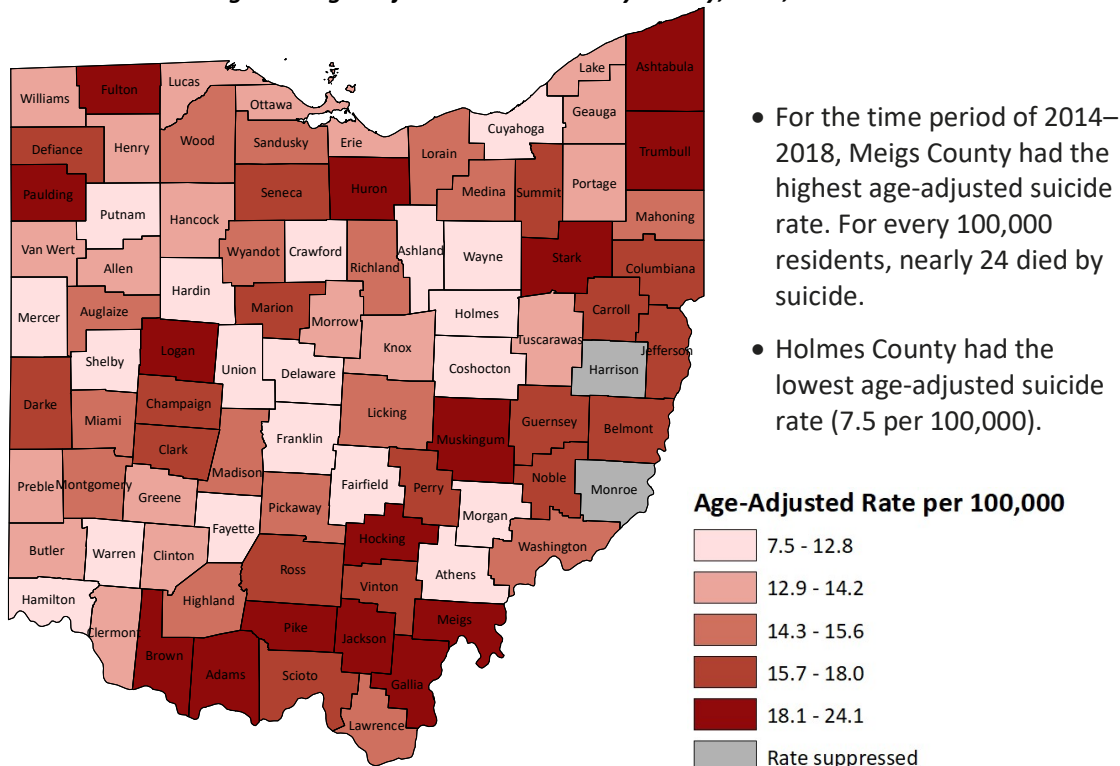
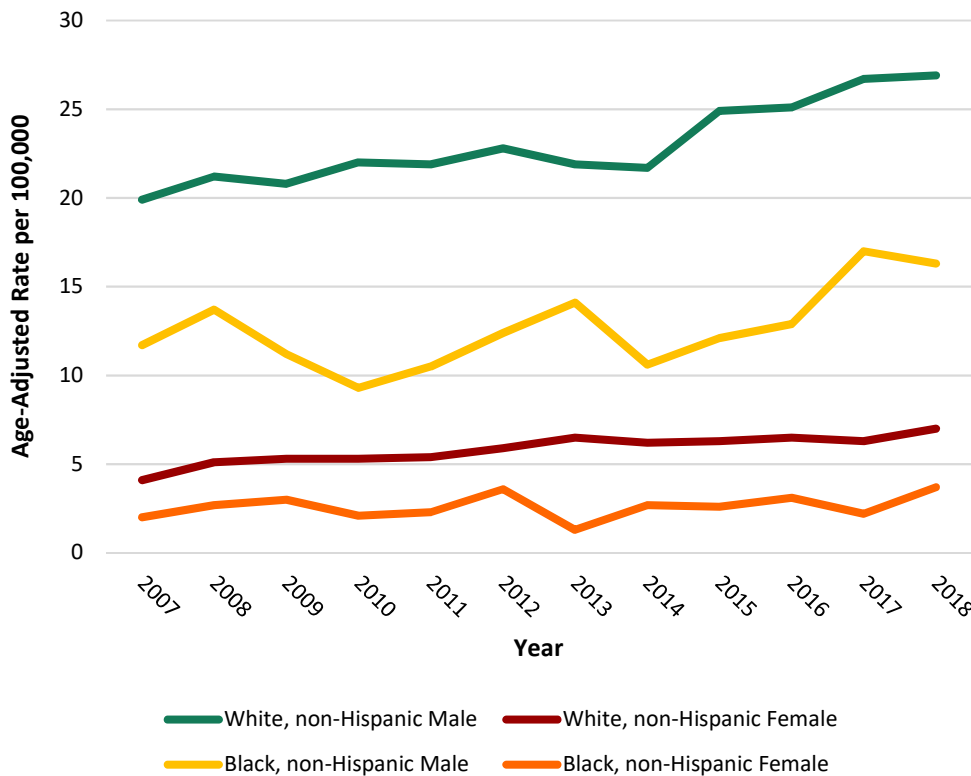


Figure 2. Age-Adjusted Suicide Rate by County, Ohio, 2014–2018



## Trends by Demographic

**Figure 3. Age-Adjusted Suicide Rate by Race/Ethnicity and Sex, Ohio, 2007–2018**



From 2007 to 2018, the overall age-adjusted suicide rate among all race/ethnicity and sex categories represented in Figure 3 have increased.

Rates are highest among white, non-Hispanic males.

Since 2014, the age-adjusted rate of suicide among white, non-Hispanic and black, non-Hispanic males increased dramatically.

- The rate among black, non-Hispanic males increased 53.8%, from 10.6 in 2014 to 16.3 deaths per 100,000 in 2018.
- The rate among white, non-Hispanic males increased 24.0%, from 21.7 in 2014 to 26.9 deaths per 100,000 in 2018.

\*Race/ethnicity categories are mutually exclusive. Specified race (white, black, other) excludes Hispanic ethnicity. Other race/ethnicity groups not shown due to small numbers.

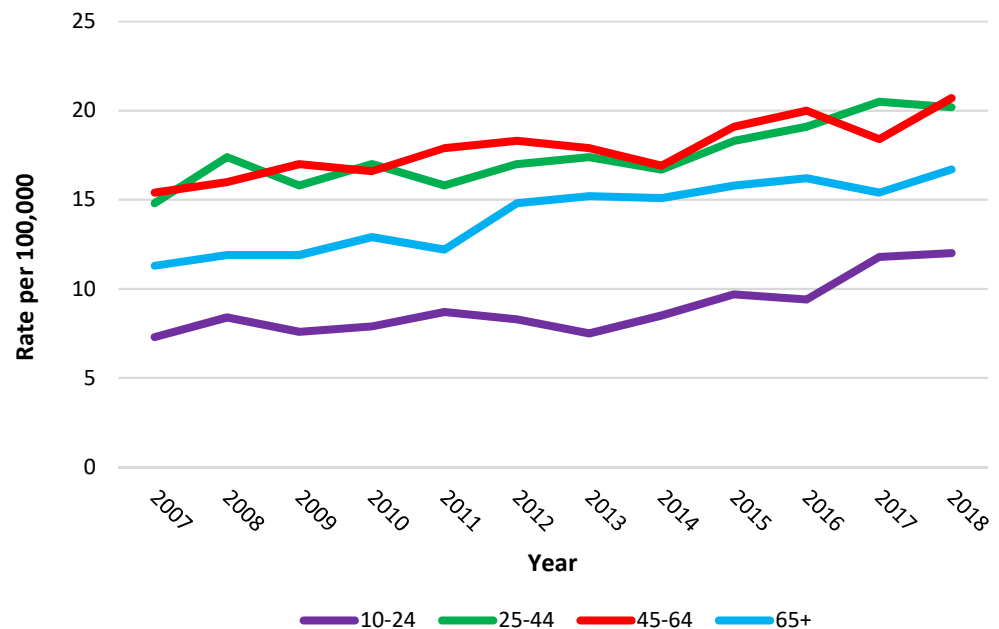
**In Ohio, five people die by suicide every day.  
One youth dies by suicide every 33 hours.**

**Figure 4. Crude Suicide Rate by Age Group, Ohio, 2007–2018**

In 2018, adults 45-64 years of age had the highest rate of suicide, followed by adults 25-44 years.

From 2007 to 2018, the rate of:

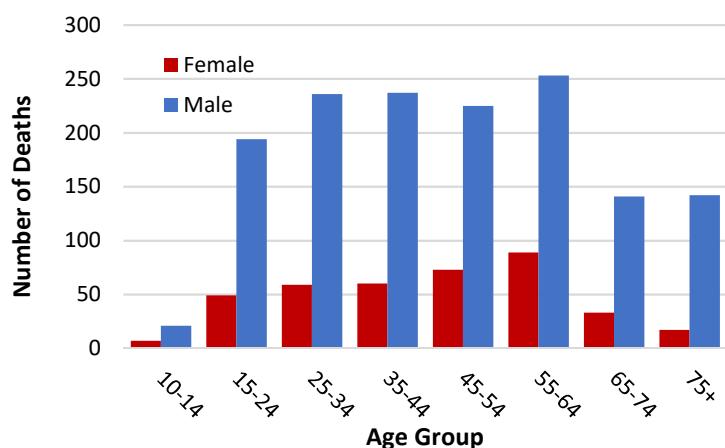
- youth suicide (10-24 years) increased 64.4%, from 7.3 to 12.0 deaths per 100,000.
- adult suicide among 25-44 year olds increased 36.5% (14.8 to 20.2) and among 45-64 year olds increased 34.4% (15.4 to 20.7).
- older adult suicide (65+ years) increased 47.8%, from 11.3 to 16.7 deaths per 100,000.



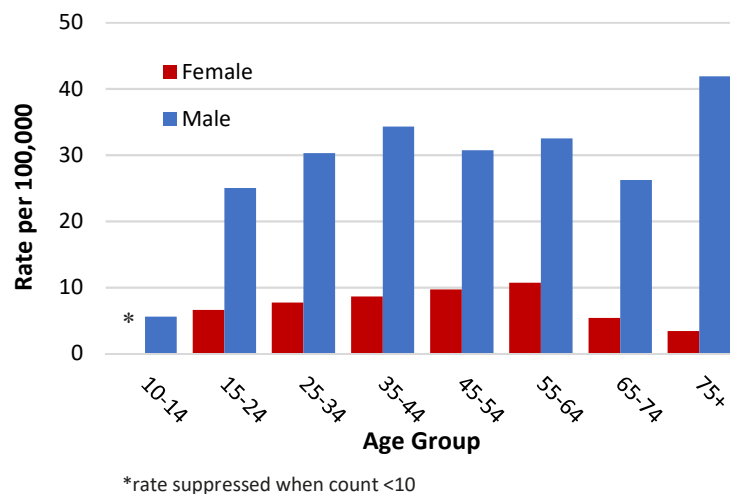
## Age and Sex

- In 2018, there were 387 suicides among females (21.1%) and 1,449 suicides among males (78.9%).
- Males are disproportionately burdened by suicide across the lifespan.
- Males 55-64 years of age had the highest number of suicide deaths, while the rate is highest among males 75 years and older.

**Figure 5. Number of Suicides by Age and Sex, Ohio, 2018**



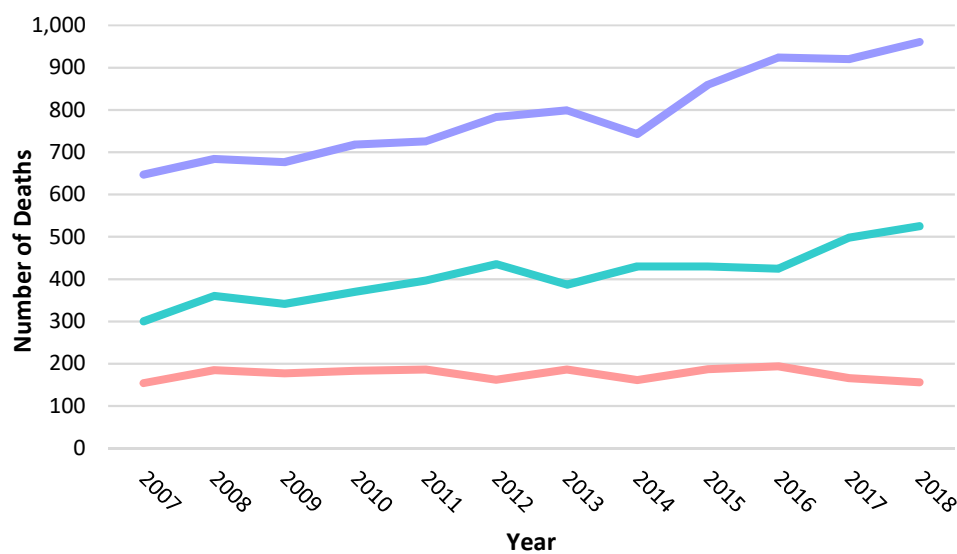
**Figure 6. Suicide Rate by Age and Sex, Ohio, 2018**



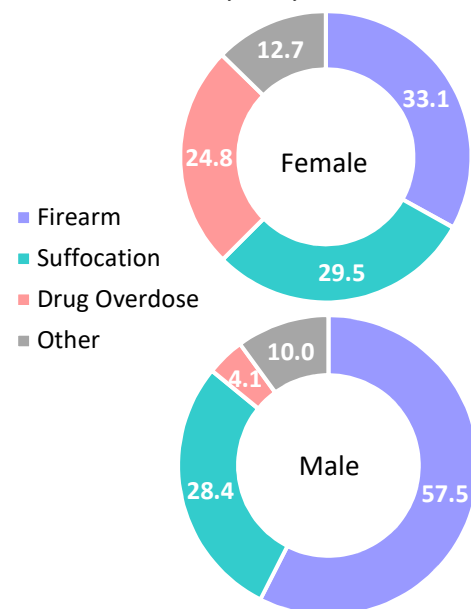
## Mechanism

- From 2007 to 2018, the number of suicides by suffocation (e.g. hanging) increased 75.0% (from 300 to 525), suicides by firearm increased 48.5% (from 647 to 961), and suicides by drug overdose remained relatively steady (from 154 to 156).
- In 2018, firearm was leading mechanism of suicide among both females and males, accounting for one-third of female suicides and more than half of male suicides.
- Among females, suicide by drug overdose accounted for 24.8% of deaths compared to only 4.1% among males.

**Figure 7. Number of Suicides by Mechanism, Ohio, 2007–2018**



**Figure 8. Percent of Suicides by Mechanism and Sex, Ohio, 2018**



**Source:** Ohio Department of Health (ODH) Bureau of Vital Statistics; analysis conducted by ODH Violence and Injury Prevention Section. Analysis includes Ohio residents with any of the following ICD-10 codes as the underlying cause of death: X60-X84, Y87.0, U03. Rates calculated per 100,000 population. Age-adjusted rates are based on the 2000 U.S. standard population.

## 2007–2018 Demographic Summary

**Table 1. Number of Suicides by Year and Demographic Characteristic, Ohio, 2007–2018**

Demographics	2007 #	2008 #	2009 #	2010 #	2011 #	2012 #	2013 #	2014 #	2015 #	2016 #	2017 #	2018 #	Rate*
<b>Age</b>													
5-9	0	0	1	0	0	0	1	0	0	0	2	0	--
10-14	8	15	14	6	9	18	14	25	14	17	25	28	3.8
15-24	166	186	167	180	197	177	161	172	210	198	244	243	16.0
25-34	193	223	198	246	228	233	244	221	258	302	296	295	19.1
35-44	252	293	262	245	225	254	256	258	269	251	301	297	21.3
45-54	283	308	330	317	334	324	316	295	335	305	308	298	20.1
55-64	190	188	206	216	243	263	253	242	271	327	268	342	21.2
65-74	80	103	100	108	101	122	137	148	146	160	146	174	15.1
75+	96	86	92	102	100	131	129	124	145	146	154	159	18.8
<b>Sex</b>													
Female	228	285	288	291	291	318	336	325	339	365	328	387	6.3
Male	1,040	1,117	1,082	1,129	1,146	1,204	1,175	1,160	1,309	1,341	1,416	1,449	24.8
<b>Race/Ethnicity</b>													
White, non-Hispanic	1,159	1,256	1,252	1,309	1,320	1,381	1,364	1,338	1,494	1,533	1,546	1,632	16.7
Black, non-Hispanic	92	111	92	79	87	109	107	95	103	118	138	150	9.8
Other, non-Hispanic	7	14	9	11	15	10	17	27	20	29	27	18	5.0
Hispanic	10	21	17	21	13	19	18	22	22	23	27	31	7.1
<b>Race/Ethnicity and Sex</b>													
White, non-Hispanic Female	211	255	261	265	269	287	321	292	305	329	297	346	7.0
White, non-Hispanic Male	948	1,001	991	1,044	1,051	1,094	1,043	1,046	1,189	1,204	1,249	1,286	26.9
Black, non-Hispanic Female	15	20	22	16	17	26	11	21	20	24	17	31	3.7
Black, non-Hispanic Male	77	91	70	63	70	83	96	74	83	94	121	119	16.3
Hispanic Female	1	5	2	5	2	4	3	3	8	2	5	6	--
Hispanic Male	9	16	15	16	11	15	15	19	14	21	22	25	10.7
<b>Total</b>	<b>1,268</b>	<b>1,402</b>	<b>1,370</b>	<b>1,420</b>	<b>1,451</b>	<b>1,534</b>	<b>1,524</b>	<b>1,488</b>	<b>1,648</b>	<b>1,706</b>	<b>1,744</b>	<b>1,836</b>	<b>15.2</b>

**Source:** Ohio Department of Health (ODH) Bureau of Vital Statistics; analysis conducted by ODH Violence and Injury Prevention Section. Analysis includes Ohio residents with any of the following ICD-10 codes as the underlying cause of death: X60-X84, Y87.0, U03. Due to missing demographic information, demographic categories may not sum to total.

Race/ethnicity categories are mutually exclusive. Hispanic includes any race. Specified race (white, black, other) excludes Hispanic ethnicity. Other race includes American Indian and Asian/Pacific Islander.

\*Rates presented for age groups are age-specific. Rates presented for sex and race/ethnicity are age-adjusted to the 2000 U.S. standard population.

Rates calculated per 100,000 population and suppressed when counts <10.